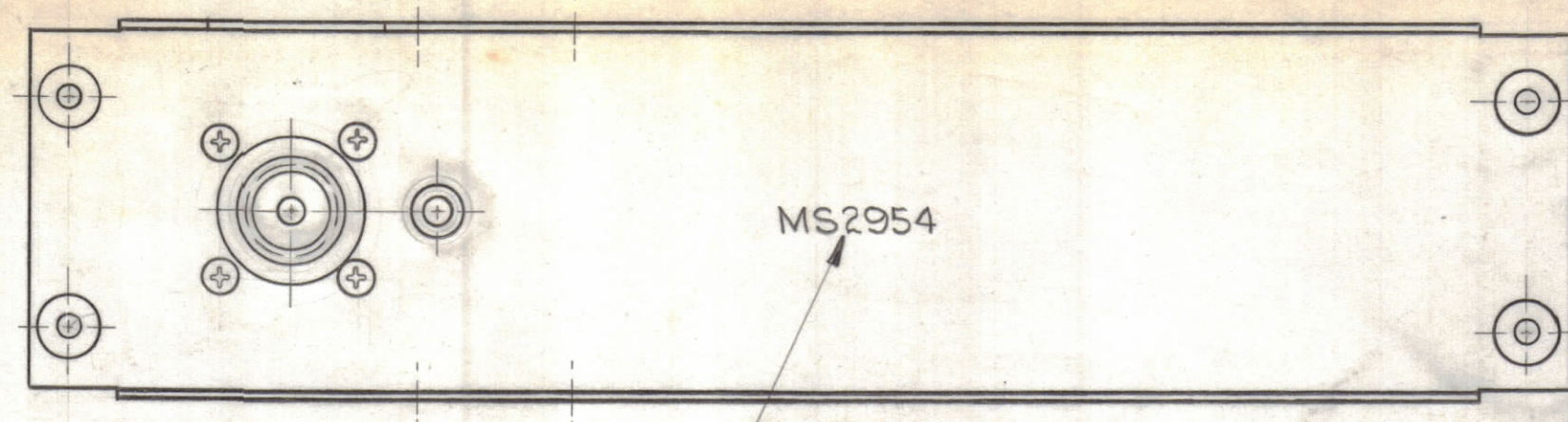
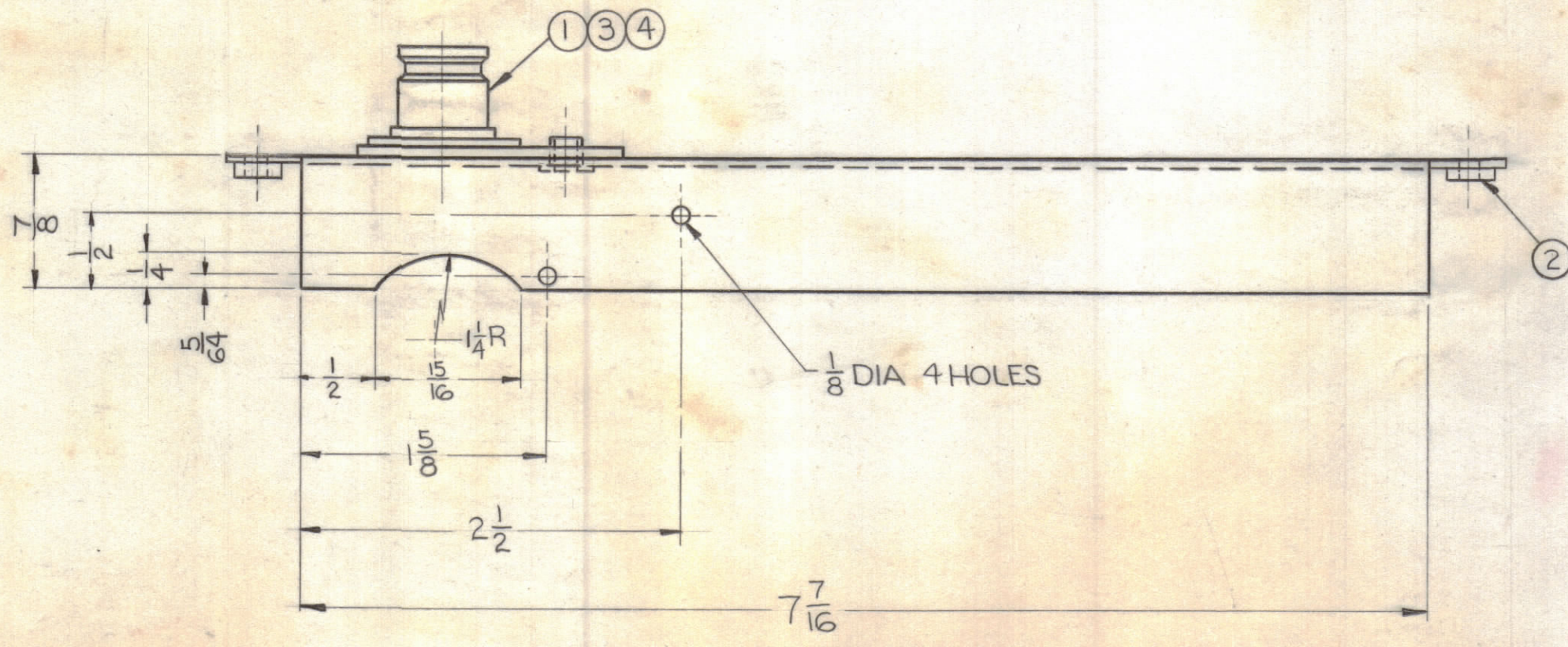
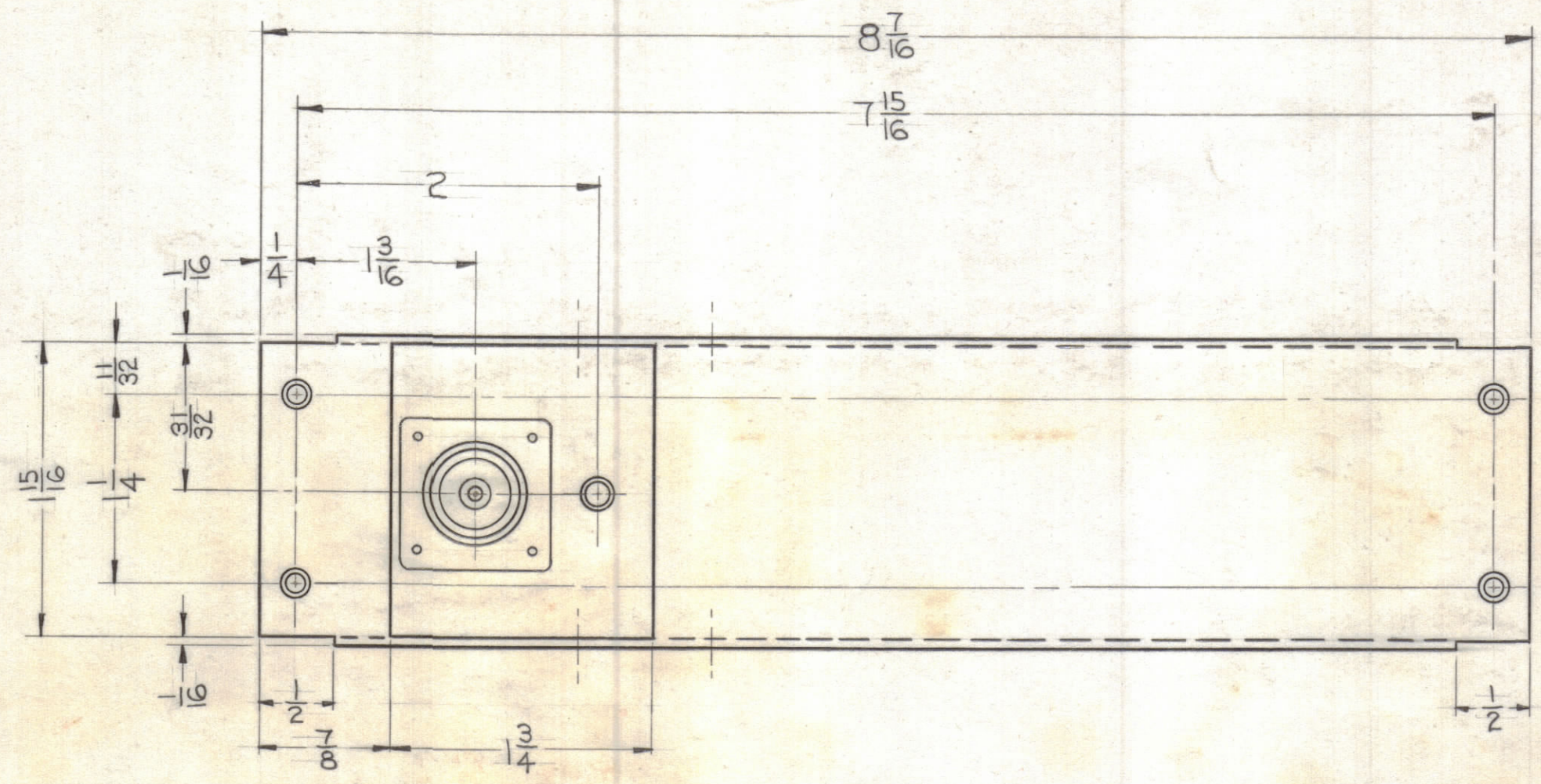


A2500 4/9

NOTICE TO PERSONS RECEIVING THIS DRAWING

THE TECHNICAL MATERIEL CORPORATION claims proprietary right in the material disclosed hereon. This drawing is issued in confidence for engineering information only and may not be reproduced or used to manufacture anything shown hereon without permission from THE TECHNICAL MATERIEL CORPORATION to the user. This drawing is loaned for mutual assistance and is subject to recall at any time.

Property of:
THE TECHNICAL MATERIEL CORPORATION
MAMARONECK, NEW YORK



MS2954
METAL STAMP TMC PART NO. 1/8 HIGH BLACK GOTHIC ON REAR OF PLATE

NOTE:
PLATE FOR MOD. SBTIK REAR ANT. FEED

REQ.	ITEM	PART NO.	DESCRIPTION	SYMBOL
4	4	LWE-03MSC	LOCKWASHER, EXTERNAL TOOTH	
4	3	SFP-0340-AC3	SCREW THD, CUTTING	
4	2	NT-129-832-4	NUT, ROUND, SWAGE TYPE	
1	1	JJ-147	ADAPTOR, CONNECTOR	

STOCK SIZE	MATERIAL	TYPE & TEMPER	HEAT TREAT. SPEC.	FINISH & SPEC. NO.
1/16	ALUM.			

THE TECHNICAL MATERIEL CORP.
MAMARONECK, NEW YORK
ASS'Y ADAPTER MOUNTING

R. Turchin
DRAWN
CHECKED
FINAL APPROVAL

APR 1 1969

A2500 4/9

SYM	ZONE	DESCRIPTION	DATE	CH. NO.	DRAFTS	CHECKER	ENG. APP.
		ORIGINAL RELEASE	7-11-69				

UNLESS OTHERWISE SPECIFIED:
DIMENSIONS ARE IN INCHES
TOLERANCES ON
FRACTIONS ± 1/64 DECIMALS ± .005 ANGLES ± 1/2°

SCALE 1" = 1" - 0

MAXIMUM ALLOWABLE TOLERANCES HAVE BEEN DETERMINED AND ANY DEVIATIONS WILL BE CAUSE FOR REJECTION. REMOVE ALL BURRS & SHARP EDGES

REQ. PER UNIT	MODEL	SECTION	ASS'Y. NO.	DATE
	SYM2002			4-25-62