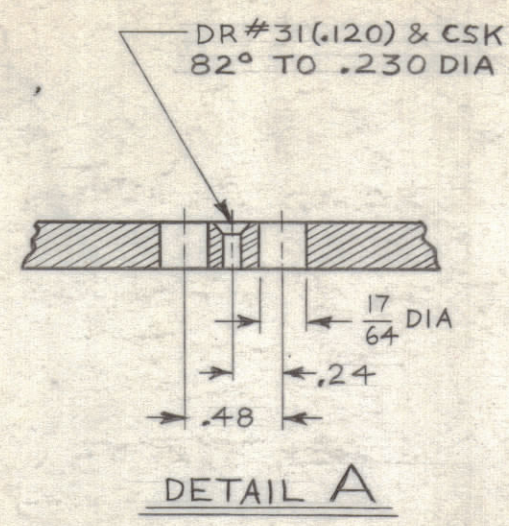
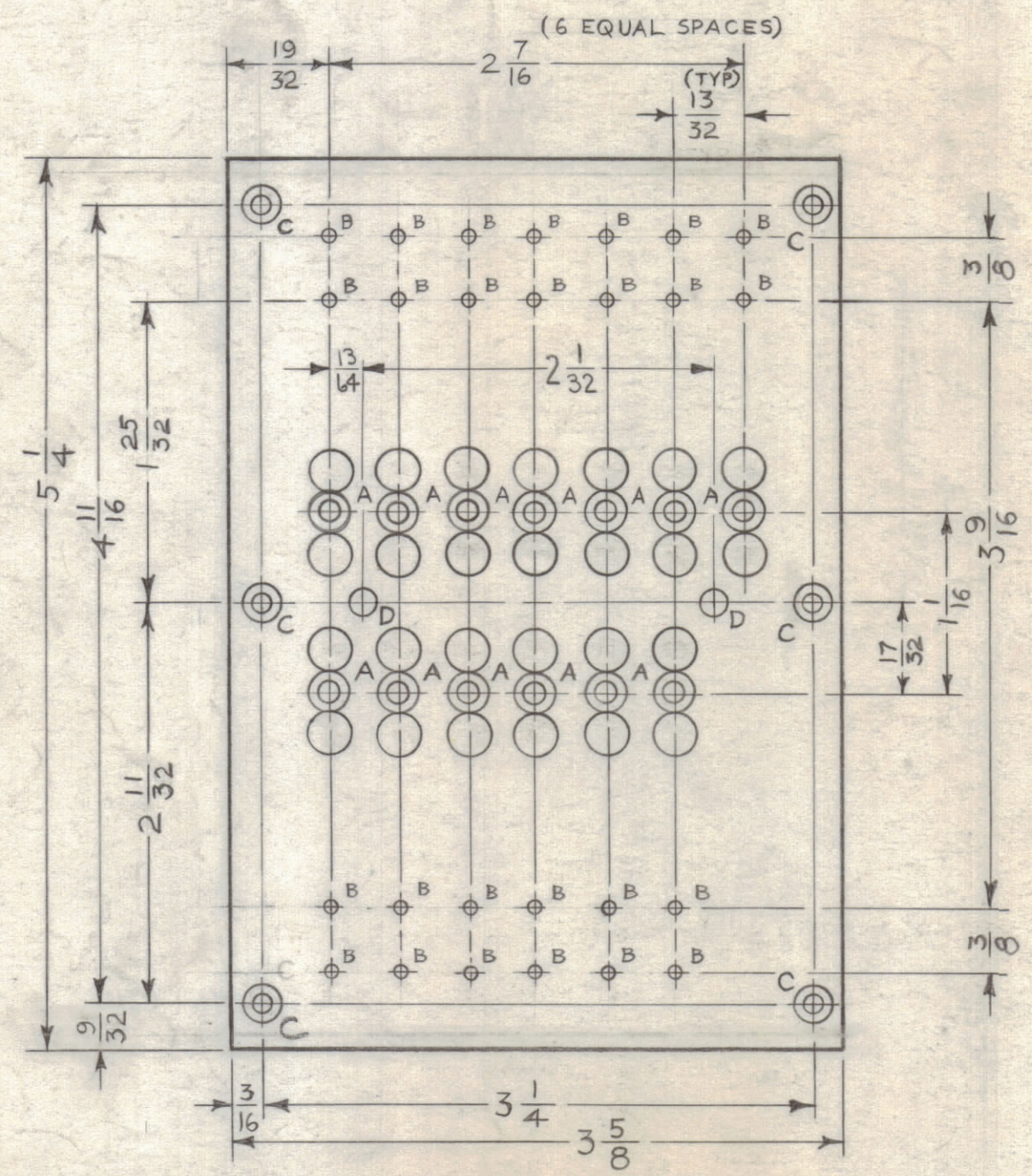


LEGEND		
HOLE	DESCRIPTION	REQ'D
A	SEE DETAIL	
B	.093 DIA	26
C	.129 DIA & CSK 82° TO .230 DIA	6
D	#12 (.189)	2

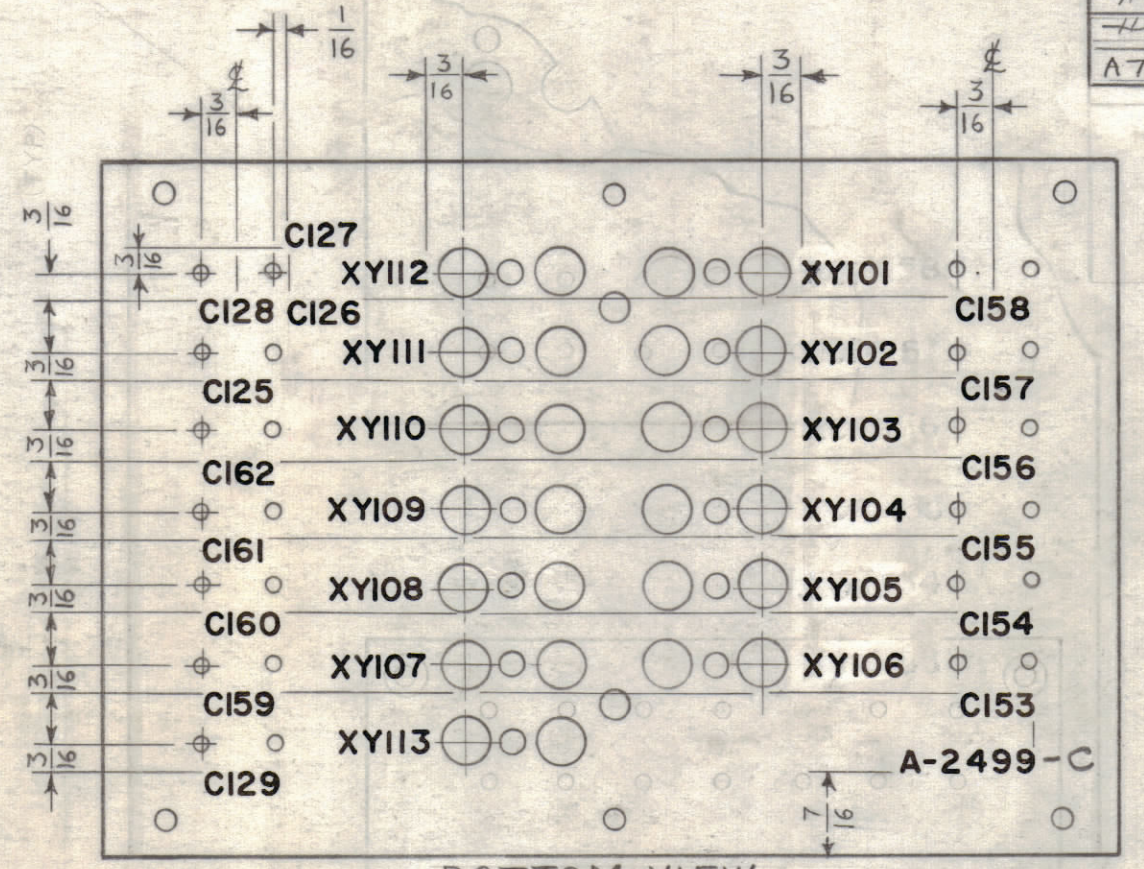


NOTES:
UNLESS OTHERWISE SPECIFIED
MARKING PROCESS: AS PER TMC SPEC S-727
LETTERING: 1/8 HIGH, BLACK GOTHIC.
LETTERING TO BE CENTERED ON HOLES

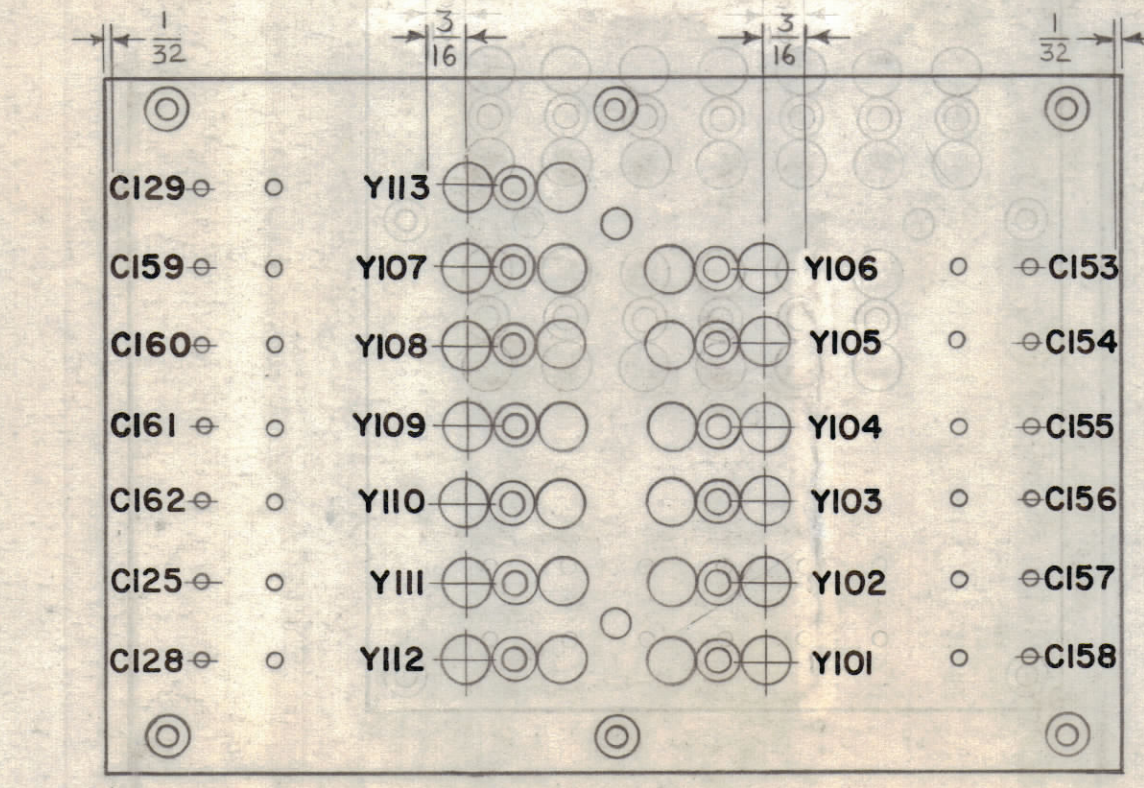
REVISIONS						
ZONE	SYM	DESCRIPTION	DATE	E.M.N. NO.	DRAFT	CHKD
B3,4	A	ITEMS (9) THRU (10) QTY REVISED ON PICTORIAL & BUILDUP DELETED ITEMS 15 THRU 19 ITEM 13 WAS MWC 22(7)U94 & ITEM 14 WAS MWC- 22(7)U97. RENUMBERED ITEM 15 THRU 19 AS ITEMS 13 & 14. ADDED CONN. BETWEEN C161 & C158	2/25/63	10064	AD	YMY
A7,87	C	JUMPERS ADDED TO STAGE 4	12/17/63	10659		YMY
#	D	CHG. MATERIAL LIST & ADDED ITEM #15	2/20/64	10902	A.M.	AD
#	E	EXTENSIVE CHANGES SEE E.M.N. #10966	3-7-64	10966	A.M.	AD
A7	F	ON PICT (STAGE 4) IT, 13 WIRING ON C129 & Y113 REVERSED.	10-7-64	12577	R.E.	AD



STAGE 1 - MACHINING A-2499-1
(MATERIAL: XXXP PHENOLIC, 1/8 THK, NATURAL)

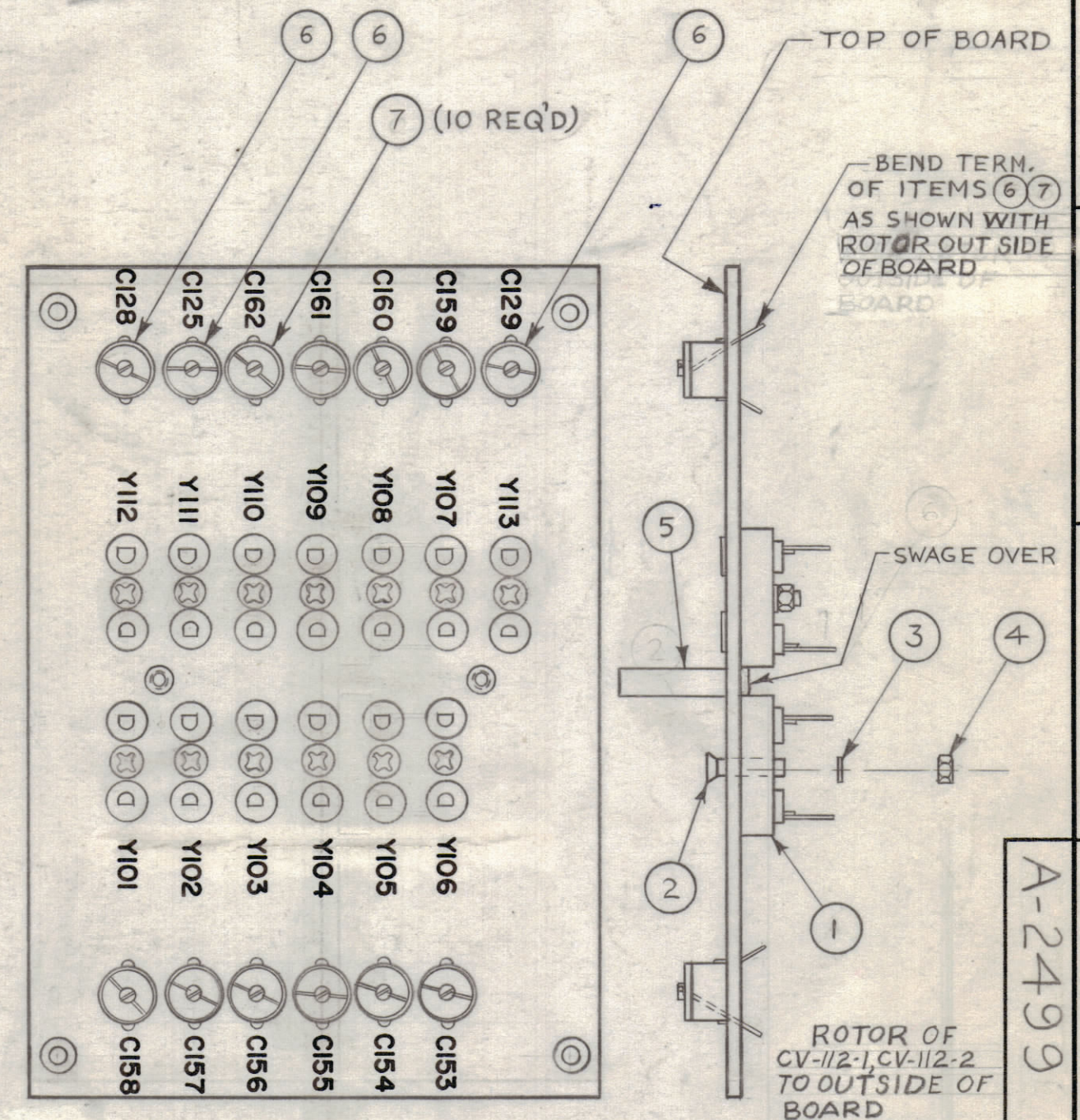


BOTTOM VIEW

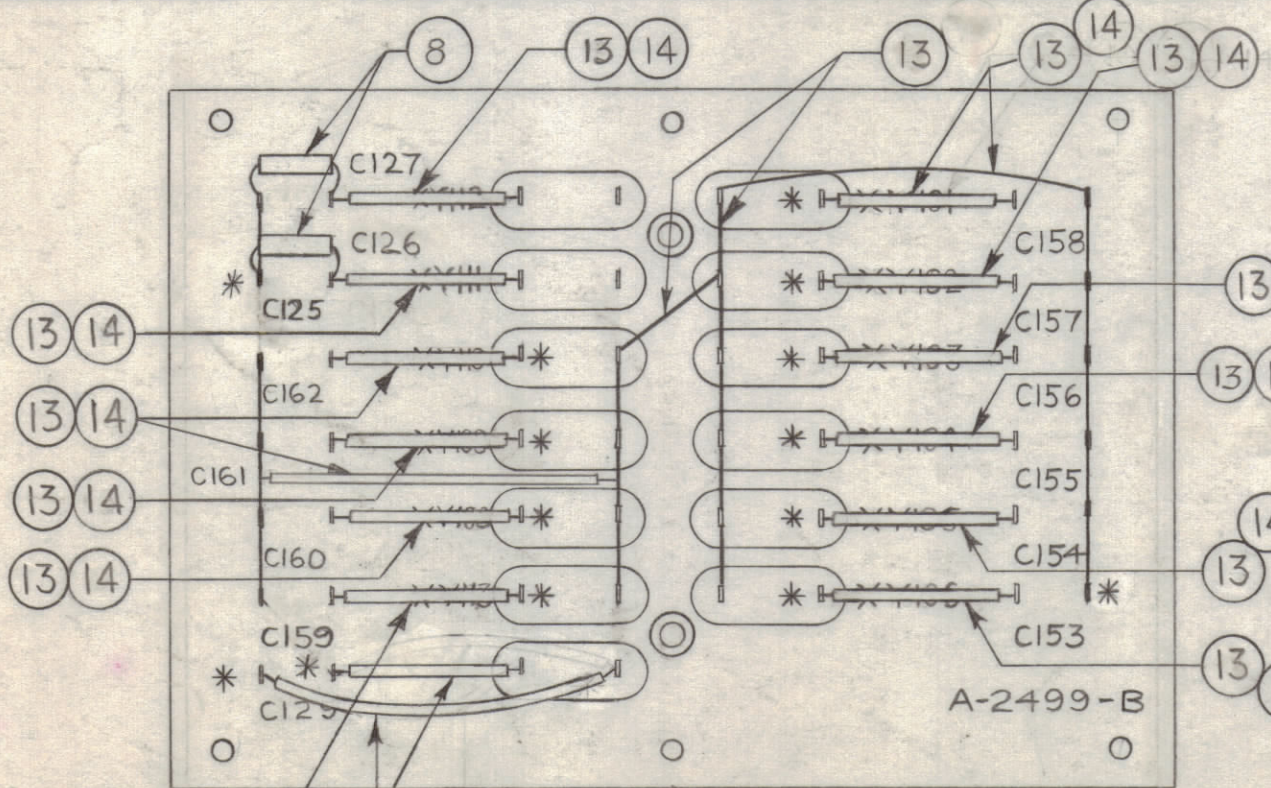


TOP VIEW

STAGE 2 - LETTERING
A-2499-2



STAGE 3 - SUB-ASSY
A-2499-3



NOTE: SOLDER ALL CONNECTIONS IN THIS ASSY, EXCEPT AS INDICATED BY *.

STAGE 4 - FINAL ASSY
A-2499-4

QTY	UNIT	MODEL USED ON	ASSY. NO.
X2	15	BS-100-2	NOTE
Q-1	14	PX-104-7-034	SLEEVING, INSULATED
Q-2	13	WL-100-5	WIRE, BUSS TINNED

LIST OF MATERIAL (CONTINUED)

REQ'D	ITEM	PART NUMBER	DESCRIPTION	SYMBOL
Q-1	12	MWC 22(7)U 92	WIRE, ELEC. COP.	WH/RED
Q-1	11	MWC 22(7)U 4	WIRE, ELEC. COP.	YELLOW
Q-1	10	MWC 22(7)U 98	WIRE, ELEC. COP.	WH/GREY
1-2	9	WL-100-7	WIRE, BUSS, SZ 22	
2	8	CM15C100K	CAPACITOR, FIXED, MICA	C126 C127
10	7	CV-112-1	CAPACITOR, VARIABLE CER.	B
3	6	CV-112-2	CAPACITOR, VARIABLE CER.	B
2	5	TE-108-25	SPACER, CLINCH	D
13	4	NTH0440BN6	NUT, HEX	
13	3	WA-109-17	WASHER, FIBER	
13	2	SC-13-0440BNB	SCREW, MACHINE UNDERCUT	
13	1	TS-104-1	SOCKET, CRYSTAL	A

J. STRUMER		LIST OF MATERIAL	
MATERIAL: SEE STAGE 1		THE TECHNICAL MATERIEL CORP. MAMARONECK, NEW YORK	
FINISH: SEE STAGE 2		TITLE: TERMINAL BOARD & COMPONENT ASSY	
UNLESS OTHERWISE SPECIFIED DIMENSIONS ARE IN INCHES AND INCLUDE CHEMICALLY APPLIED OR PLATED FINISHES		DRAWN: N. Patero CHECKED: AD DATE: 2-15-63 DATE: 2-18-63 DATE: 3-19-63	FINAL APPROVAL: [Signature] DATE: 3-18-63 SHEET: A-2499 REV. LTR.: E