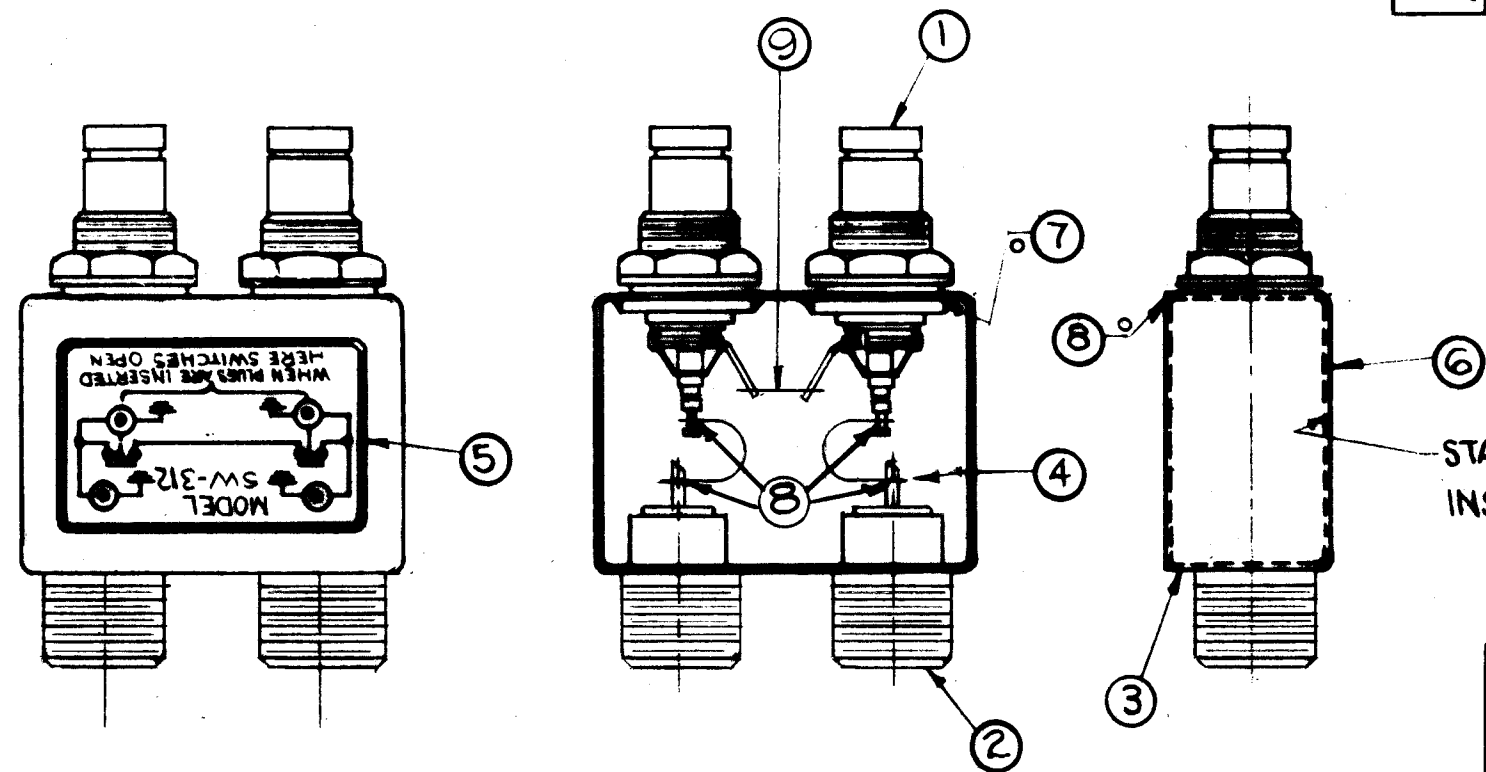


A 2463 D

REVISIONS

SYM	DESCRIPTION	DATE	E.M.N. NO.	DRAFT	CHKD	APPD
A	ITEM (4) WAS MS-2983-4	4-10-63	8786	EC	SMY	STB
B	ON B/M IT. 3 BX200-2 WAS BX200-1	5-21-66	15989	HLA	STB	STB
C	ITEM 3 WAS BX200-2 IT 7 WAS BS106-4 ITEM 8 WAS BS106-2	4-19-66	16102	UPW	STB	STB
D	ITEM 4 WAS MS2983-6	1-30-66		G.D.L		



1. INDUCTION HEATING EQUIPMENT SET AT:
AMPERES -
SECONDS -
2. USE ITEM SEVEN (7) FOR MOUNTING ITEMS ONE (1) AND TWO (2).
3. USE ITEM EIGHT (8) FOR SEALING COVER ITEM THREE (3).
4. STRAP (ITEM 4) MUST BE KEPT AS FLEXIBLE AS POSSIBLE. DO NOT ALLOW SOLDER TO RUN OVER STRAP. LAY STRAP IN SO THAT IT CANNOT TOUCH CAN OR CONNECTOR BODIES.
5. FINISH AS FOLLOWS:
S-114 - ZINC CHROMATE PRIMER
S-115 - TMC SMOOTH GREY ENAMEL
(DO NOT PAINT CONNECTOR BODIES.)
6. AFFIX ITEM FIVE (5) TO FRONT AS SHOWN.
7. AFFIX ITEM SIX (6) TO REAR AS SHOWN.

0 - DENOTES SOLDER ALL AROUND

NOTES

1"	9	WL-100-5	WIRE, BUSS-BAR #18	
X	8	BS-100	SOLDER, TIN ALLOY	
X	7	BS-100-2	SOLDER, TIN ALLOY	
1	6	NP-488	NAMEPLATE IDENTIFICATION (FOIL CAL.)	
1	5	NP-490-5	SCHEMATIC, DIAGRAM (FOIL CAL.)	
2	4	WL 103-2	BRAID, WIRE FLAT	
1	3	BX-200-2	CASE, COVER	
2	2	JJ-218	ADAPTOR CONNECTOR	
2	1	JJ-239	ADAPTOR, CONNECTOR	
REQ'D.	ITEM	PART NUMBER	DESCRIPTION	SYMBOL

LIST OF MATERIAL

MATERIAL	SEE LIST	THE TECHNICAL MATERIEL CORP. MAMARONECK, NEW YORK		
FINISH	SEE NOTE NO.5	TITLE SW-312 ASSEMBLY		
UNLESS OTHERWISE SPECIFIED DIMENSIONS ARE IN INCHES AND INCLUDE CHEMICALLY APPLIED OR PLATED FINISHES		DRAWN A. Jurek	DATE 6-8-62	FINAL APPROVAL <i>[Signature]</i>
DECIMALS .X ± .08 .XX ± .01 .XXX ± .005		CHECKED H.D.	DATE	DATE
TOLERANCES FRACTIONS ± 1/64 ANGLES ± 0° 30'		ELECT. DES. <i>[Signature]</i>	DATE	DATE
		MECH. DES. <i>[Signature]</i>	DATE 6/7/62	DATE
				A 2463
				D
				SHEET
				REV. LTR.

1	SW-312	A-2463
Q'TY./UNIT	MODEL USED ON	ASS'Y. NO.
SCALE DO NOT SCALE	CODE	
THE CONTENTS OF THIS DRAWING ARE THE EXCLUSIVE PROPERTY OF THE TECHNICAL MATERIEL CORP. ITS UNAUTHORIZED USE OR REPRODUCTION IN WHOLE OR IN PART IS STRICTLY FORBIDDEN.		