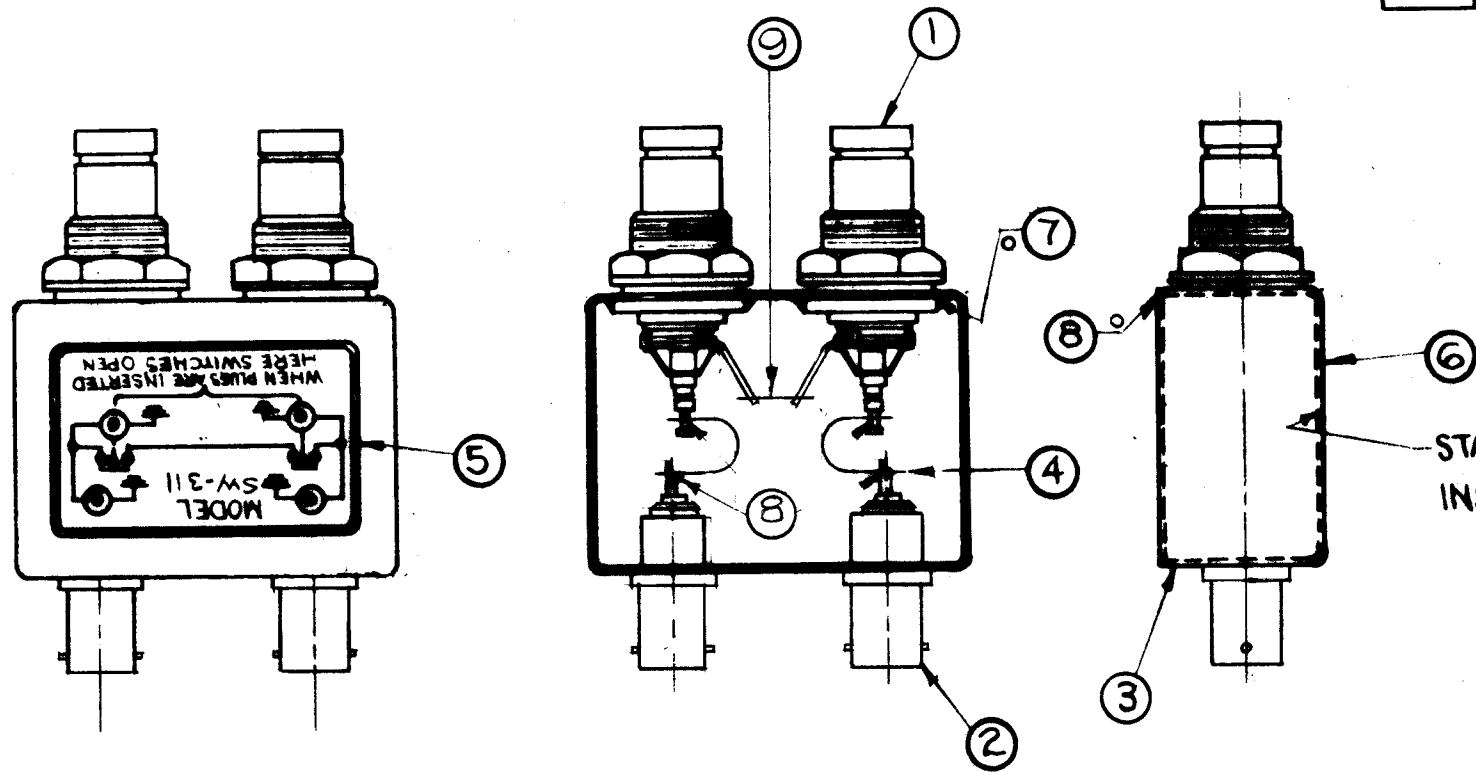


A2462 C

REVISIONS

SYM	DESCRIPTION	DATE	E.M.N. NO.	DRAFT	CHKD
A	ITEM (4) WAS MS-2983-2	4-10-63	8786	RC	OK
B	IT(3) WAS BX200-2.	1/5/65	14935	FLV.	OK
C	ITEM 4 WAS MS 2983-5	1-30-85		C.DL	



1. INDUCTION HEATING EQUIPMENT SET AT:
 AMPERES -
 SECONDS -
2. USE ITEM SEVEN(7) FOR MOUNTING ITEMS ONE(1) AND TWO(2).
3. USE ITEM EIGHT(8) FOR SEALING COVER ITEM THREE(3).
4. STRAP (ITEM 4) MUST BE KEPT AS FLEXIBLE AS POSSIBLE. DO NOT ALLOW SOLDER TO RUN OVER STRAP. LAY STRAP IN SO THAT IT CANNOT TOUCH CAN OR CONNECTOR BODIES.
5. FINISH AS FOLLOWS:
 S-114 - ZINC CHROMATE PRIMER
 S-115 - TMC SMOOTH GREY ENAMEL
 (DO NOT PAINT CONNECTOR BODIES.)
6. AFFIX ITEM FIVE(5) TO FRONT AS SHOWN.
7. AFFIX ITEM SIX(6) TO REAR AS SHOWN.

0 - DENOTES SOLDER ALL AROUND

NOTES

REQ'D.	ITEM	PART NUMBER	DESCRIPTION	SYMBOL
1"	9	WL-100-5	WIRE, BUSS-BAR #18	
X	8	BS-100-2	SOLDER, SOFT 375°	
X	7	BS-100-2	SOLDER, SOFT 375°	
1	6	NP-488	NAMEPLATE IDENTIFICATION (FOIL CAL.)	
1	5	NP-490-4	SCHEMATIC, DIAGRAM (FOIL CAL.)	
2	4	WL-103-2	BRAID, WIRE FLAT	
1	3	BX-200-1	CASE, COVER	
2	2	JJ-249	ADAPTOR CONNECTOR	
2	1	JJ-239	ADAPTOR, CONNECTOR	

LIST OF MATERIAL

MATERIAL	SEE LIST	THE TECHNICAL MATERIEL CORP. MAMARONECK, NEW YORK	
FINISH	SEE NOTE NO.5	TITLE SW-311 ASSEMBLY	
UNLESS OTHERWISE SPECIFIED DIMENSIONS ARE IN INCHES AND INCLUDE CHEMICALLY APPLIED OR PLATED FINISHES		DRAWN A. Juchin 6-8-62	FINAL APPROVAL <i>[Signature]</i> DATE
DECIMALS .X ± .00 .XX ± .01 .XXX ± .005		CHECKED <i>[Signature]</i>	DATE
TOLERANCES ± 1/64 ANGLES ± 0° 30'		ELECT. DES. <i>[Signature]</i>	DATE
		MECH. DES. <i>[Signature]</i>	DATE 6/27/62
		SHEET A-2462	
		REV. LTR. C	

1	SW-311	A-2462
Q'TY./UNIT	MODEL USED ON	ASS'Y. NO.
SCALE	CODE	
DO NOT SCALE		
THE CONTENTS OF THIS DRAWING ARE THE EXCLUSIVE PROPERTY OF THE TECHNICAL MATERIEL CORP. ITS UNAUTHORIZED USE OR REPRODUCTION IN WHOLE OR IN PART IS STRICTLY FORBIDDEN.		