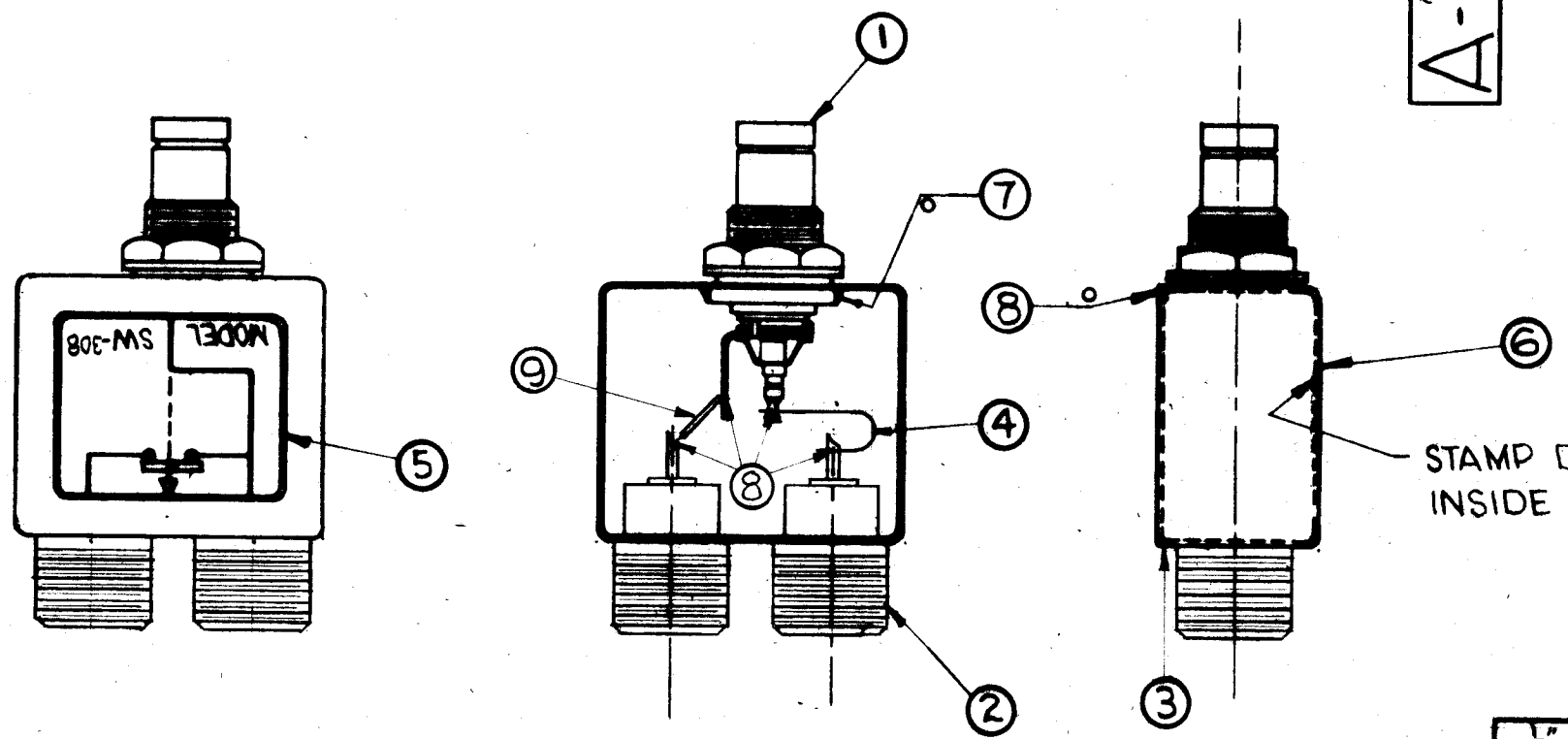


A-2459 A

REVISIONS						
SYM	DESCRIPTION	DATE	E.M.N. NO.	DRAFT	CHKD	APPD
A	ITEM 4 WAS STRAP FLEXIBLE	1-30-62		GDL		



STAMP DATE ON INSIDE SURFACE

- INDUCTION HEATING EQUIPMENT SET AT:
 AMPERES -
 SECONDS -
- USE ITEM SEVEN (7) FOR MOUNTING ITEMS ONE (1) AND TWO (2).
- USE ITEM EIGHT (8) FOR SEALING COVER ITEM THREE (3).
- STRAP (ITEM 4) MUST BE KEPT AS FLEXIBLE AS POSSIBLE. DO NOT ALLOW SOLDER TO RUN OVER STRAP. LAY STRAP IN SO THAT IT CANNOT TOUCH CAN OR CONNECTOR BODIES.
- FINISH AS FOLLOWS:
 S-114 - ZINC CHROMATE PRIMER
 S-115 - TMC SMOOTH GREY ENAMEL
 (DO NOT PAINT CONNECTOR BODIES.)
- AFFIX ITEM FIVE (5) TO FRONT AS SHOWN.
- AFFIX ITEM SIX (6) TO REAR AS SHOWN.

0 - DENOTES SOLDER ALL AROUND
NOTES

REQ'D.	ITEM	PART NUMBER	DESCRIPTION	SYMBOL
1/2"	9	WL-100-5	WIRE, BUSS-BAR #18	
X	8	BS-106-2	SOLDER, SOFT 361°	
X	7	BS-106-4	SOLDER, SOFT 450°	
1	6	NP-488	NAMEPLATE IDENTIFICATION (FOIL CAL.)	
1	5	NP-488-5	SCHEMATIC, DIAGRAM (FOIL CAL.)	
1	4	WL103-2	BRAID, WIRE FLAT	
1	3	BX-199-2	CASE, COVER	
2	2	JJ-218	ADAPTOR, CONNECTOR	
1	1	JJ-239	ADAPTOR, CONNECTOR	

LIST OF MATERIAL

MATERIAL SEE LIST	THE TECHNICAL MATERIEL CORP. MAMARONECK, NEW YORK		
FINISH SEE NOTE NO.5	TITLE SW-308 ASSEMBLY		
UNLESS OTHERWISE SPECIFIED DIMENSIONS ARE IN INCHES AND INCLUDE CHEMICALLY APPLIED OR PLATED FINISHES	DRAWN <i>R. Furchia</i>	DATE 6-8-62	FINAL APPROVAL
	CHECKED <i>J. De</i>	DATE 6-26-62	
DECIMALS .X ± .05 .XX ± .01 .XXX ± .005	TOLERANCES	FRACTIONS ± 1/64 ANGLES ± 0° 30'	DATE 6/27/62
ELECT. DES. <i>[Signature]</i>		DATE	A-2459
MECH. DES. <i>[Signature]</i>		DATE	
THE CONTENTS OF THIS DRAWING ARE THE EXCLUSIVE PROPERTY OF THE TECHNICAL MATERIEL CORP. ITS UNAUTHORIZED USE OR REPRODUCTION IN WHOLE OR IN PART IS STRICTLY FORBIDDEN.			REV. LTR. A