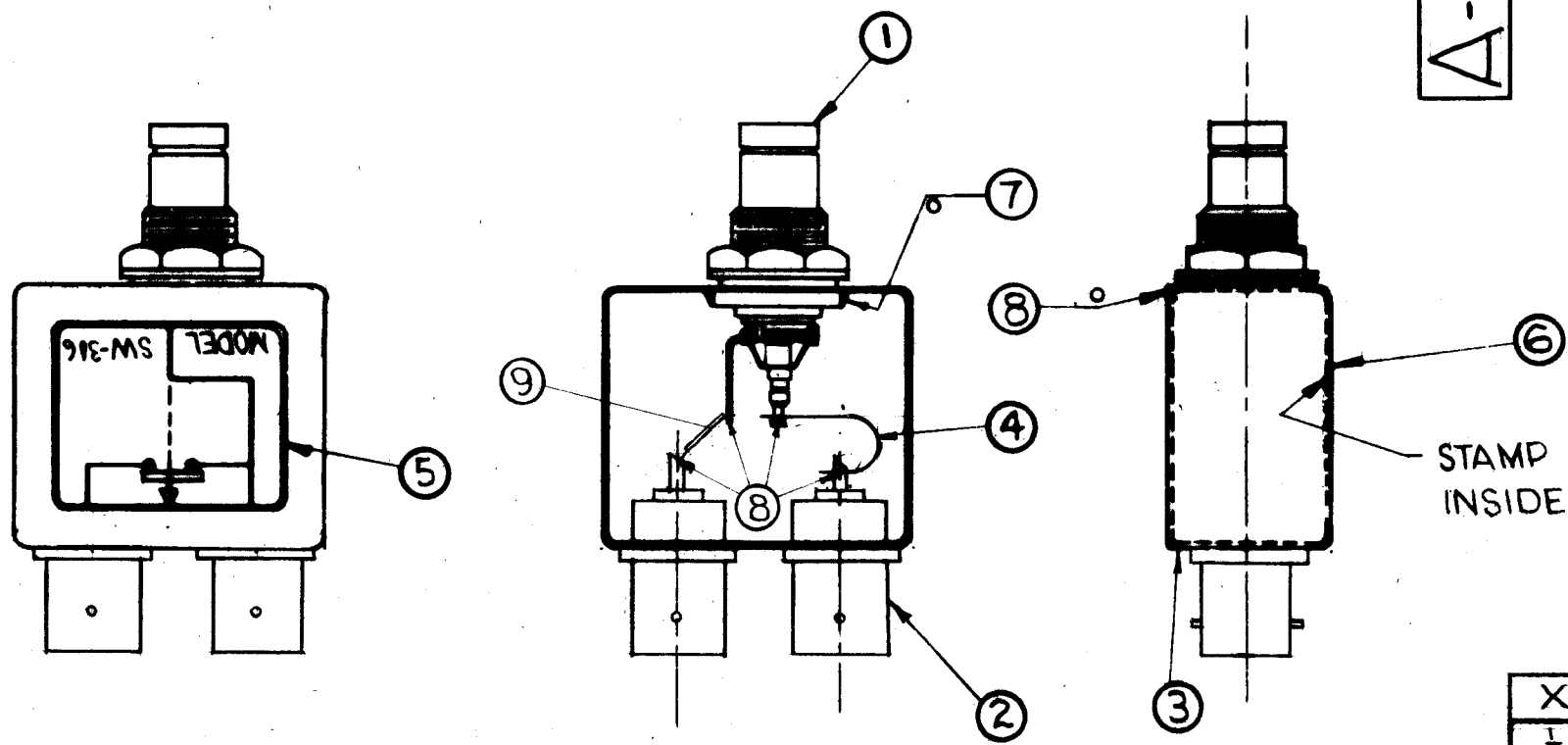


A-2457

REVISIONS

SYM	DESCRIPTION	DATE	E.M.N. NO.	DRAFT	CHKD	APPD
A	ITEM 4 WAS STRAP FLEXIBLE	1-26-66		G.D.L.		



- INDUCTION HEATING EQUIPMENT SET AT:
AMPERES -
SECONDS -
- USE ITEM SEVEN(7) FOR MOUNTING ITEMS ONE(1) AND TWO(2).
- USE ITEM EIGHT(8) FOR SEALING COVER ITEM THREE(3).
- STRAP (ITEM 4) MUST BE KEPT AS FLEXIBLE AS POSSIBLE. DO NOT ALLOW SOLDER TO RUN OVER STRAP. LAY STRAP IN SO THAT IT CANNOT TOUCH CAN OR CONNECTOR BODIES.
- FINISH AS FOLLOWS:
S-114 - ZINC CHROMATE PRIMER
S-115 - TMC SMOOTH GREY ENAMEL
(DO NOT PAINT CONNECTOR BODIES.)
- AFFIX ITEM FIVE(5) TO FRONT AS SHOWN.
- AFFIX ITEM SIX(6) TO REAR AS SHOWN.

O - DENOTES SOLDER ALL AROUND
NOTES

REQ'D.	ITEM	PART NUMBER	DESCRIPTION	SYMBOL
X	10	S-692	TEST PROCEDURE	
1/2"	9	WL-100-5	WIRE, BUSS-BAR #18	
X	8	BS-106-2	SOLDER, SOFT 361°	
X	7	BS-106-4	SOLDER, SOFT 450°	
1	6	NP-488	NAMEPLATE IDENTIFICATION (FOIL CAL.)	
1	5	NP-489-3	SCHEMATIC, DIAGRAM (FOIL CAL.)	
1	4	WL-103-2	BRAID, WIRE FLAT	
1	3	BX-199-2	CASE, COVER	
2	2	JJ-255	ADAPTOR, CONNECTOR	
1	1	JJ-239	ADAPTOR, CONNECTOR	

LIST OF MATERIAL

MATERIAL: SEE LIST	THE TECHNICAL MATERIEL CORP. MAMARONECK, NEW YORK			
FINISH: SEE NOTE NO.5	TITLE SW-306 ASSEMBLY			
UNLESS OTHERWISE SPECIFIED DIMENSIONS ARE IN INCHES AND INCLUDE CHEMICALLY APPLIED OR PLATED FINISHES	DRAWN <i>R. Jurek</i>	DATE 6-8-62	FINAL APPROVAL <i>[Signature]</i>	DATE
	CHECKED <i>[Signature]</i>	DATE 6-26-62		
	ELECT. DES. <i>[Signature]</i>	DATE		
	MECH. DES. <i>[Signature]</i>	DATE 6/27/62		
DECIMALS .X ± .08 .XX ± .01 .XXX ± .005	TOLERANCES	FRACTIONS ± 1/64 ANGLES ± 0° 30'	A-2457	
THE CONTENTS OF THIS DRAWING ARE THE EXCLUSIVE PROPERTY OF THE TECHNICAL MATERIEL CORP. ITS UNAUTHORIZED USE OR REPRODUCTION IN WHOLE OR IN PART IS STRICTLY FORBIDDEN.			SHEET	REV. LTR.

Q'TY./UNIT	MODEL USED ON	ASS'Y. NO.
	SW-306	A-2457
SCALE	CODE	
DO NOT SCALE		