

REVISIONS							NEG	POS.
BYM	DESCRIPTION	DATE	E.M.N. NO.	DRAFT	CHKD	APPD		
A	SEE SHEET 2 OF 2 REVISION "A"	1-15-63	8025					
B	SEE SHEET 2 OF 2 REVISION "B"	11-26-63	10463					
C	SEE SHEET 2 OF 2 REVISION "C"	3-24-64	11050	NTB				
D	SEE SHEET 2 OF 2 REV. "D" (2" HOLES RELOC.)	1-5-65	13217	92			PURCH	QA
E	SEE SHEET 2 OF 2	11-15-65	15159					
F	LETTERING "A2446-" ENLARGED TO 1/2"	6-27-66	CC	WHB				
G	ON MTG NOTES, NOTE 4 DELETED, NOTE 7 CLARIFIED. SEE SHEET 2 OF 2	10-11-66	17020	C.D.L.				
H	STAGE 2 TRANSFERRED FROM SHEET 2	1-4-68	18698	4X				OP

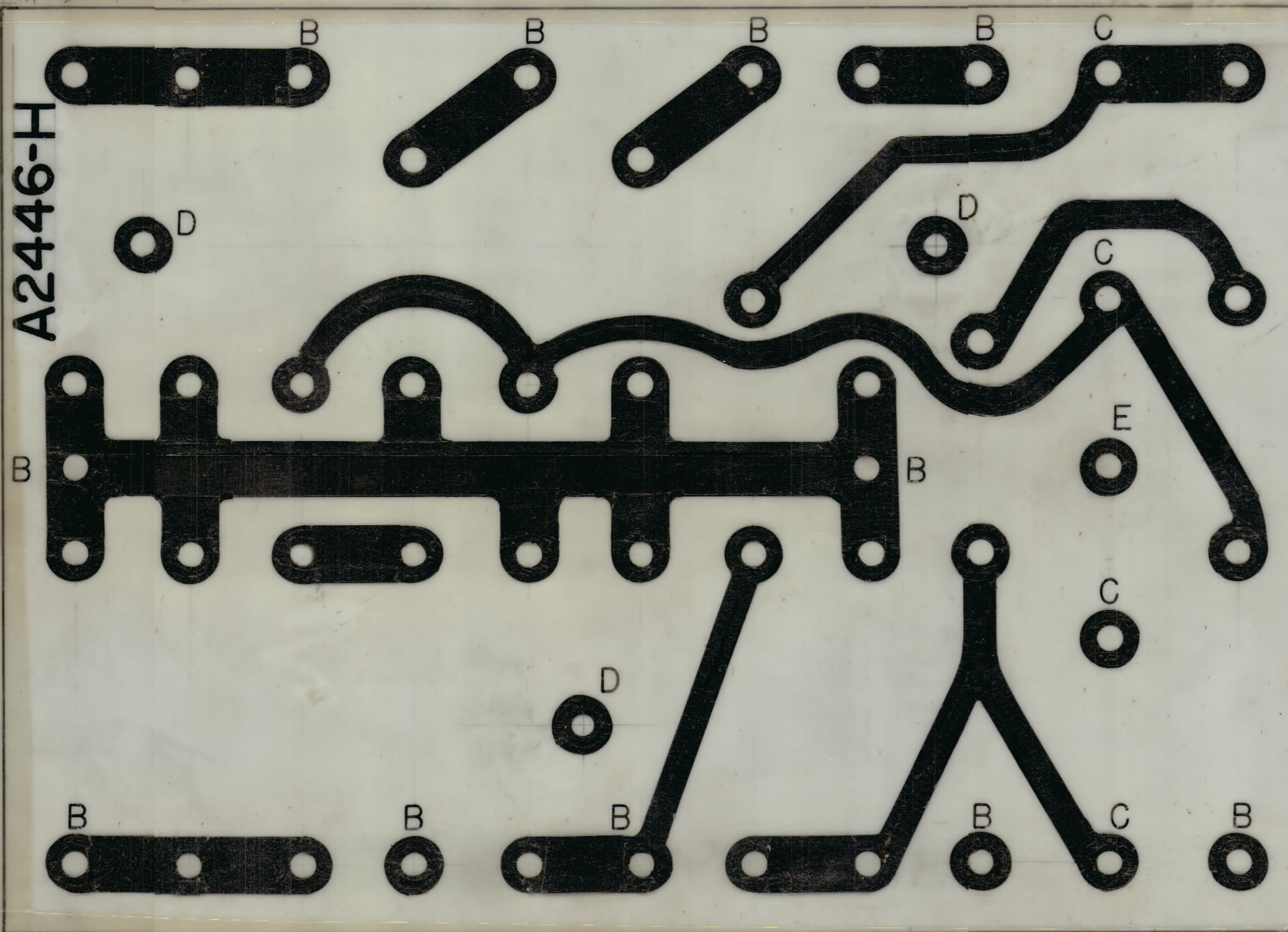
A-ALL HOLES WITHOUT LETTER DESIGNATION TO BE .052 DIA. 31 REQ.
 B-.078 DIA. 11 REQ.
 C-.073 DIA. 4 REQ.
 D-.189 DIA. 3 REQ.
 E-.312 DIA. 1 REQ.

NOTICE TO PERSONS RECEIVING DRAWING

THE TECHNICAL MATERIEL CORPORATION claims proprietary right in the material disclosed hereon. This drawing is issued in confidence for engineering information only and may not be reproduced or used to manufacture anything shown hereon without permission from THE TECHNICAL MATERIEL CORPORATION to the user. This drawing is loaned for mutual assistance and is subject to recall at any time.

Property of:
 THE TECHNICAL MATERIEL CORPORATION
 MAMARONECK, NEW YORK

REDUCE AS SHOWN



A2446-H

REDUCE TO ~ $2 \frac{1+0}{16} - \frac{1}{32}$

REDUCE TO ~ $2 \frac{7+0}{8} - \frac{1}{2}$

STAGE 1
 SCALE 4:1

MFG. NOTES (IMPORTANT)

- DO NOT PRINT LETTER DESIGNATIONS AS SHOWN ON CIRCUIT (DENOTES HOLE SIZES)
- COPPER FOIL: TWO OUNCES, ONE SIDE AS SHOWN
- PLATING (MINIMUM THICKNESS) .0005 TIN LEAD ON CONDUCTORS
- MOUNT ITEM 2 (SEE SHEET 2) IN ALL "D" HOLES AS SHOWN IN STAGE 3
- MOUNT ITEM 1 (SEE SHEET 2) IN ALL "B" HOLES AS SHOWN IN STAGE 3
- SOLDER ITEM 1 TO RESPECTIVE PADS.

A2446 - -
 VENDOR TO LEAVE BLANK VENDOR TO INSERT REVISION LETTER

NOTE:
 ALL LETTERING TO BE $\frac{3}{32}$ HIGH
 CENTERED ON COMPONENT MOUNTING HOLE CENTER LINES WHERE POSSIBLE

STAMP TMC PART NO. AS SHOWN ABOVE W/LATEST REV. LETTER.

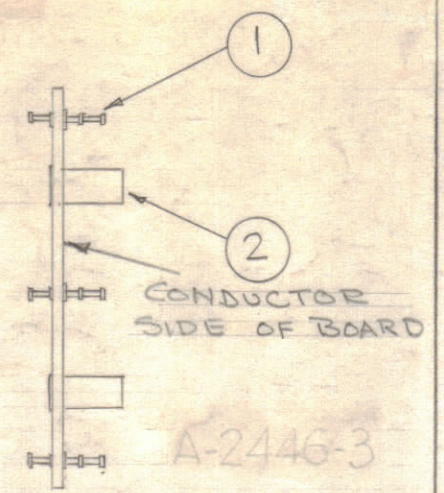
R5056	C5057	L5007	C5058	L5026	C5062	C5061	R5060	R5059	Y5001	Y5000	R5062
L5027	C5068	C5067	C5070	R5063	C5071	R5065	C5072	L5009	C5060		
A-2446-											

STAGE 2

REQ	ITEM	PART NO.	WESCHLER DESCRIPTION	SYMBOL
		062	THE TECHNICAL MATERIEL CORP. MAMARONECK NEW YORK	
		EPOXY	PRINTED, ELECTRICAL CIRCUIT (AFC-3)	
	G-10		RUIZZO	
	TYPE & TEMPER		DRAWN	FINAL APPROVAL
				A-2446 H
	FINISH		ELEC. DES. APP.	MECH. DES. APP.
			SHEET 1 OF 2	

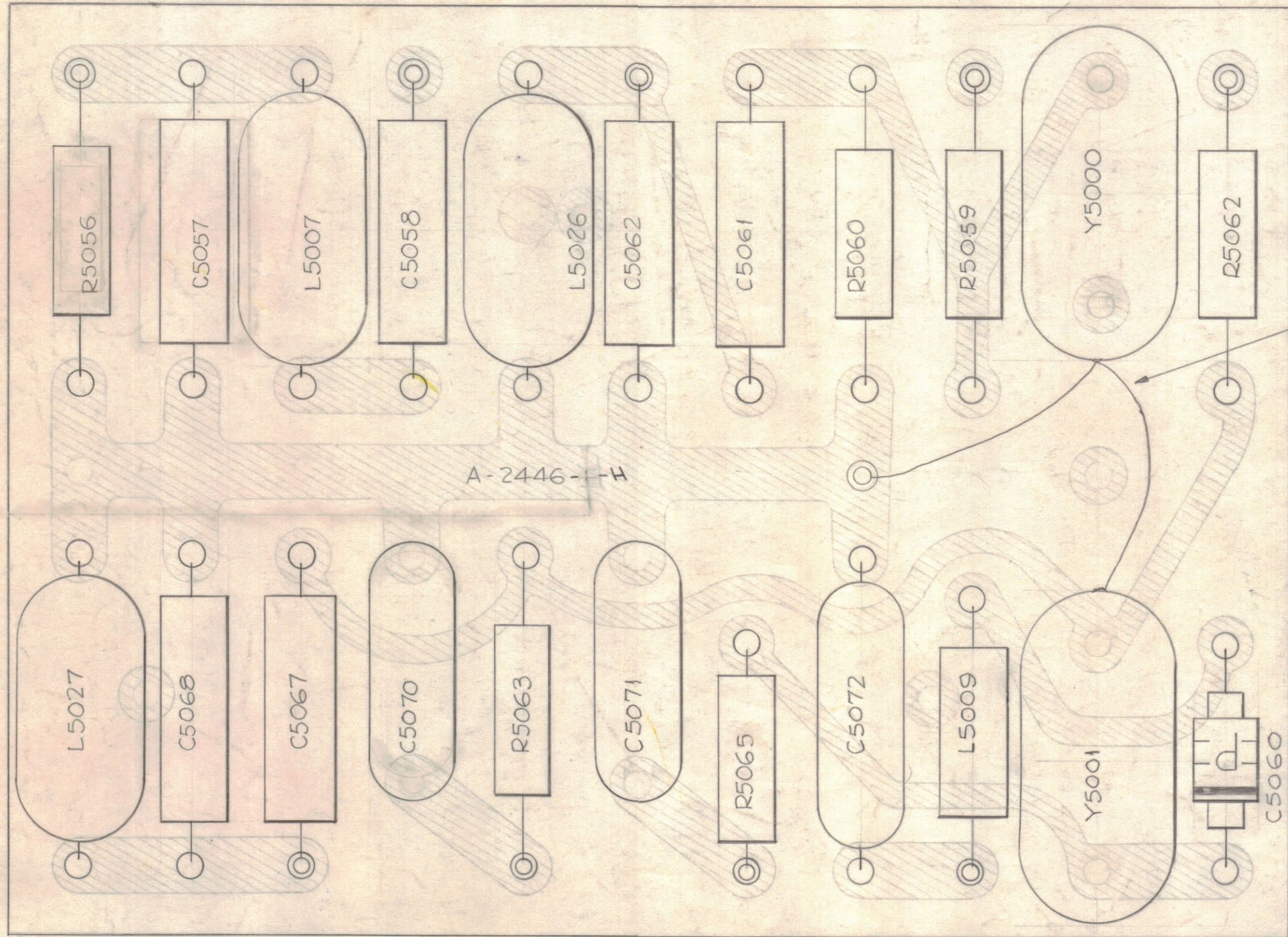
REVISIONS						
ZONE	SYM	DESCRIPTION	DATE	E.M.N. NO.	DRAFT	CHKD
C2	A	ITEM (10) WAS CX-106-2	1-15-63	8025		
C2	B	ITEM (10) WAS CX-106-11	11-24-63	10463		
C2	C	ITEM #10 WAS CX-106-12, IT. #13 WAS CL-275-821	3-24-64	11050		
#	D	IT. (2) P.N. WAS "TE 196 B11B4", PT. NO. UPDATED ② "D" HOLES RELOC. IN VICINITY OF L5009 & L5026.	2-3-65	13217		
#	E	IT. 3, 4, 5, "JWASK" IT. 6 WAS CM12 E202K3C IT. 7 WAS CM15C511K, IT. 8 WAS CM15C1B1G IT. 9 WAS CM15C201K, STAGES ADDED. STAGE 4 (ADD)	11/65	15159		
F		SEE SHEET 1 OF 2	6-27-66	CC		
G		ITEM 16 DELETED - ON MTG. PROCEDURE NOTE 1 & 2 CLARIFIED - SEE SHEET 1 OF 2	10-11-66	17020		
H		TRANSFER STAGE 2 TO SHEET 1 - ADD NOTE	1-4-68	18698		

STAGE 5 (ELECTRICAL ASSY, FOR 205 KC)
CHANGE ITEM #12 TO CR109-84, SYM Y5000.



STAGE 3 ~ SUB-ASS'Y.
NOTE:
SEE SHEET ONE (1) FOR LOCATION OF ITEMS 1, 2 & 16

NOTICE TO PERSONS RECEIVING THIS DRAWING
THE TECHNICAL MATERIEL CORPORATION claims proprietary right in the material disclosed hereon. This drawing is issued in confidence for engineering information only and may not be reproduced or used to manufacture anything shown hereon without permission from THE TECHNICAL MATERIEL CORPORATION to the user. This drawing is loaned for mutual assistance and is subject to recall at any time.
Property of:
THE TECHNICAL MATERIEL CORPORATION
MAMARONECK, NEW YORK

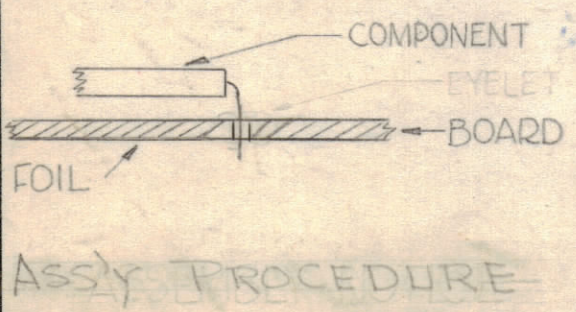


SOLDER ITEM 17 TO CASE OF ITEMS 11 & 12

NOTE:
HAND STAMP
-4" AFTER
ASSY. IS
COMPLETE.

QTY.	UNIT	MODEL USED ON	ASS'Y. NO.
1		AFC-7	A2446-5
1		AFC-3	A2446-4

REQ'D.	ITEM	PART NUMBER	DESCRIPTION	SYMBOL
X	17	WL-100-7	WIRE, BUSS #22	
	16	DELETED	EYELET	
X	15	BS-100	SOLDER, SOFT	
3	14	CL-140-1	COIL, RF, FIXED, MOLDED	
1	13	CL-275-391	COIL, RF	L5009
1	12	CR-109-1	CRYSTAL UNIT, QUARTZ	Y5000
1	11	CR-109-2	CRYSTAL UNIT, QUARTZ	Y5001
1	10	CX-106-11	CAPACITOR, VOLTAGE, VARIABLE	C5060
1	9	CM15F201J03	FIXED, MICA	C5062
3	8	CM15F181G03		
2	7	CM15F511J03		C5057 C5058
3	6	CM12F202G5S	CAPACITOR, FIXED, MICA	
1	5	RC20GF472J	RESISTOR, FIXED, CARBON	R5056
2	4	RC20GF470J	" " "	R5059 R5062
3	3	RC20GF104J	RESISTOR, FIXED, CARBON	
3	2	TE 164-16	STANDOFF, RIVET, TYPE	
11	1	TE-168-4B	TERMINAL, MINIATURE	



- 1) TO MOUNT COMPONENTS - INSERT LEAD THROUGH HOLE & BEND ABOUT 1/16" OF LEAD OVER COPPER FOIL AS SHOWN.
- 2) APPLY HEAT AND SOLDER LEAD TO FOIL. - CAUTION - TOO MUCH HEAT WILL CAUSE THE FOIL TO SEPARATE FROM THE BOARD.
- 3) DO NOT BEND CRYSTAL PINS. - SOLDER THEM DIRECTLY TO FOIL.
- 4) CLEAN & INSPECT AS PER S-676.
- 5) CLEAN & INSPECT AS PER S-676.

NOTE ~ FOR PRINTED CIRCUIT DIAGRAM SEE SHEET 1 OF A-2446.

NOTES

THE CONTENTS OF THIS DRAWING ARE THE EXCLUSIVE PROPERTY OF THE TECHNICAL MATERIEL CORP. ITS UNAUTHORIZED USE OR REPRODUCTION IN WHOLE OR IN PART IS STRICTLY FORBIDDEN.

LIST OF MATERIAL			
MATERIAL		THE TECHNICAL MATERIEL CORP. MAMARONECK, NEW YORK	
FINISH		TITLE PRINTED, ELECT. CIRCUIT & COMPONENT ASSY.	
UNLESS OTHERWISE SPECIFIED DIMENSIONS ARE IN INCHES AND INCLUDE CHEMICALLY APPLIED OR PLATED FINISHES	DRAWN	DATE	FINAL APPROVAL
DECIMALS .X ± .05 .XX ± .01 .XXX ± .005	CHECKED	DATE	DATE
FRACTIONS 1/64 ANGLES ± 0° 30'	ELECT. DES.	DATE	DATE
TOLERANCES	MECH. DES.	DATE	DATE

A-2446

SHEET 2 OF 2

REV. LTR.