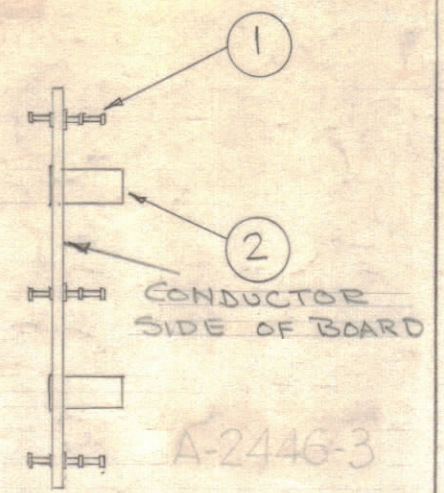


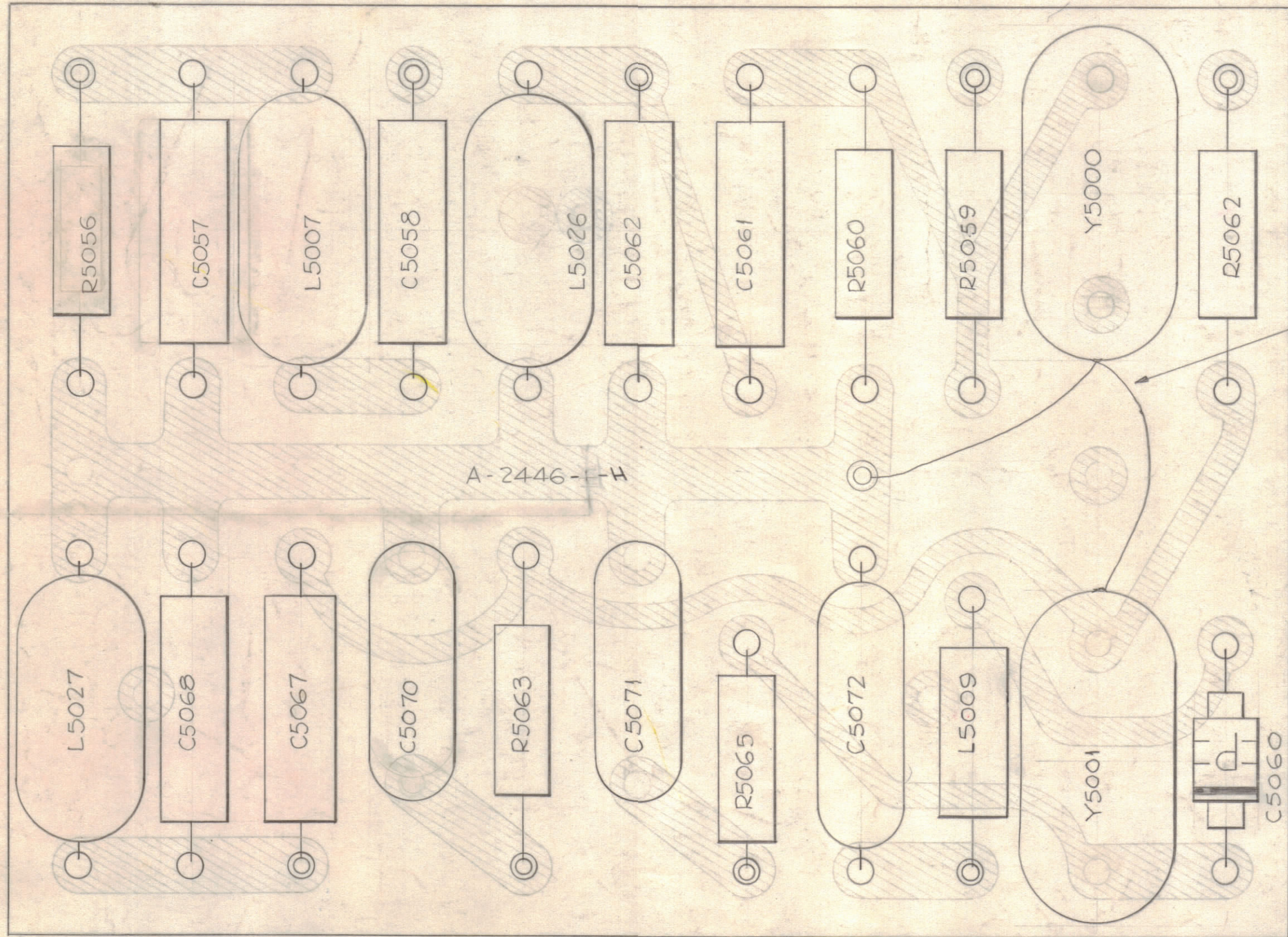
REVISIONS							
ZONE	SYM	DESCRIPTION	DATE	E.M.N. NO.	DRAFT	CHKD	APPD
C2	A	ITEM (10) WAS CX-106-2	1-15-63	8025			
C2	B	ITEM (10) WAS CX-106-11	11-24-63	10463			
C2	C	ITEM #10 WAS CX-106-12, IT. #13 WAS CL-275-821	3-24-64	11050			
#	D	IT. (2) P/N. WAS "TE 196 B11B4", PT. NO. UPDATED ② "D" HOLES RELOC. IN VICINITY OF L5009 & L5026.	2-3-65	13217			
#	E	IT. 3, 4, 5, "JWASK" IT. 6 WAS CM12 E202K3C IT. 7 WAS CM15C511K, IT. 8 WAS CM15C1B1G IT. 9 WAS CM15C201K, STAGES ADDED. STAGE 4 (C) ADD	1/16/65	15159			
F		SEE SHEET 1 OF 2	6-27-66	CC			
G		ITEM 16 DELETED - ON MTG. PROCEDURE NOTE 1 & 2 CLARIFIED - SEE SHEET 1 OF 2	10-11-66	17020			
H		TRANSFER STAGE 2 TO SHEET 1 - ADD NOTE	1-4-68	18698			

STAGE 5 (ELECTRICAL ASSY, FOR 205 KC)
CHANGE ITEM #12 TO CR109-84, SYM Y5000.



STAGE 3 ~ SUB-ASS'Y.
NOTE:
SEE SHEET ONE (1) FOR LOCATION OF ITEMS 1, 2 & 16

NOTICE TO PERSONS RECEIVING THIS DRAWING
THE TECHNICAL MATERIEL CORPORATION claims proprietary right in the material disclosed hereon. This drawing is issued in confidence for engineering information only and may not be reproduced or used to manufacture anything shown hereon without permission from THE TECHNICAL MATERIEL CORPORATION to the user. This drawing is loaned for mutual assistance and is subject to recall at any time.
Property of:
THE TECHNICAL MATERIEL CORPORATION
MAMARONECK, NEW YORK

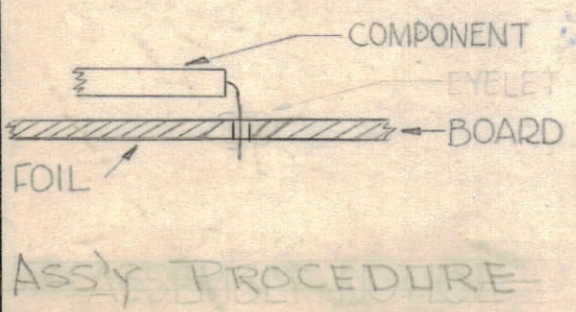


SOLDER ITEM 17 TO CASE OF ITEMS 11 & 12

NOTE:
HAND STAMP
-4" AFTER
ASSY. IS
COMPLETE.

QTY.	UNIT	MODEL USED ON	ASS'Y. NO.
1		AFC-7	A2446-5
1		AFC-3	A2446-4

REQ'D.	ITEM	PART NUMBER	DESCRIPTION	SYMBOL
X	17	WL-100-7	WIRE, BUSS #22	
	16	DELETED	EYELET	
X	15	BS-100	SOLDER, SOFT	
3	14	CL-140-1	COIL, RF, FIXED, MOLDED	
1	13	CL-275-391	COIL, RF	L5009
1	12	CR-109-1	CRYSTAL UNIT, QUARTZ	Y5000
1	11	CR-109-2	CRYSTAL UNIT, QUARTZ	Y5001
1	10	CX-106-11	CAPACITOR, VOLTAGE, VARIABLE	C5060
1	9	CM15F201J03	FIXED, MICA	C5062
3	8	CM15F181G03		
2	7	CM15F511J03		C5057 C5058
3	6	CM12F202G5S	CAPACITOR, FIXED, MICA	
1	5	RC20GF472J	RESISTOR, FIXED, CARBON	R5056
2	4	RC20GF470J	" " "	R5059 R5062
3	3	RC20GF104J	RESISTOR, FIXED, CARBON	
3	2	TE 164-16	STANDOFF, RIVET, TYPE	
11	1	TE-168-4B	TERMINAL, MINIATURE	



- 1) TO MOUNT COMPONENTS - INSERT LEAD THROUGH HOLE & BEND ABOUT 1/16" OF LEAD OVER COPPER FOIL AS SHOWN.
- 2) APPLY HEAT AND SOLDER LEAD TO FOIL. - CAUTION - TOO MUCH HEAT WILL CAUSE THE FOIL TO SEPARATE FROM THE BOARD.
- 3) DO NOT BEND CRYSTAL PINS. - SOLDER THEM DIRECTLY TO FOIL.
- 4) CLEAN & INSPECT AS PER S-676.
- 5) CLEAN & INSPECT AS PER S-676.

NOTE ~ FOR PRINTED CIRCUIT DIAGRAM SEE SHEET 1 OF A-2446.

NOTES

THE CONTENTS OF THIS DRAWING ARE THE EXCLUSIVE PROPERTY OF THE TECHNICAL MATERIEL CORP. ITS UNAUTHORIZED USE OR REPRODUCTION IN WHOLE OR IN PART IS STRICTLY FORBIDDEN.

WESCHLER		LIST OF MATERIAL			
MATERIAL		THE TECHNICAL MATERIEL CORP. MAMARONECK, NEW YORK			
FINISH		TITLE PRINTED, ELECT. CIRCUIT & COMPONENT ASSY.			
UNLESS OTHERWISE SPECIFIED DIMENSIONS ARE IN INCHES AND INCLUDE CHEMICALLY APPLIED OR PLATED FINISHES	DRAWN	DATE	FINAL APPROVAL	DATE	
DECIMALS .X ± .05 .XX ± .01 .XXX ± .005	CHECKED	DATE			
FRACTIONS ± 1/64 ANGLES ± 0° 30'	ELECT. DES.	DATE			
TOLERANCES	MECH. DES.	DATE			
			A-2446	H	
			SHEET 2 OF 2	REV. LTR.	