

A-2444

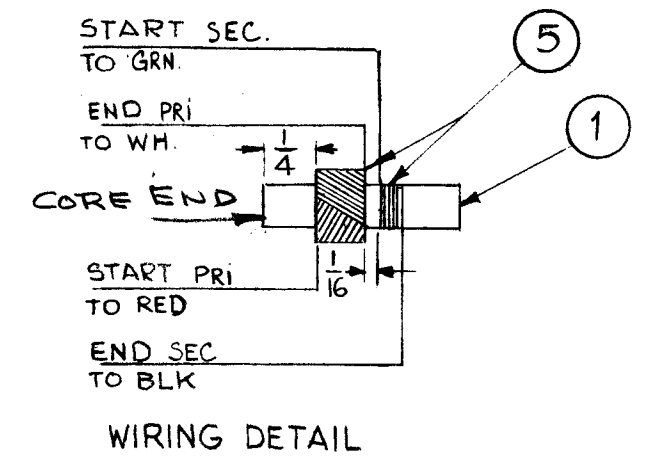
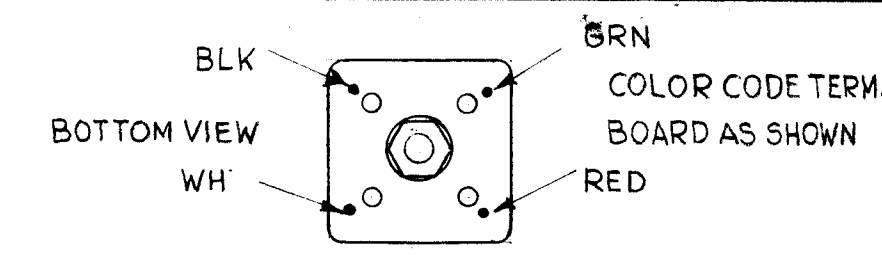
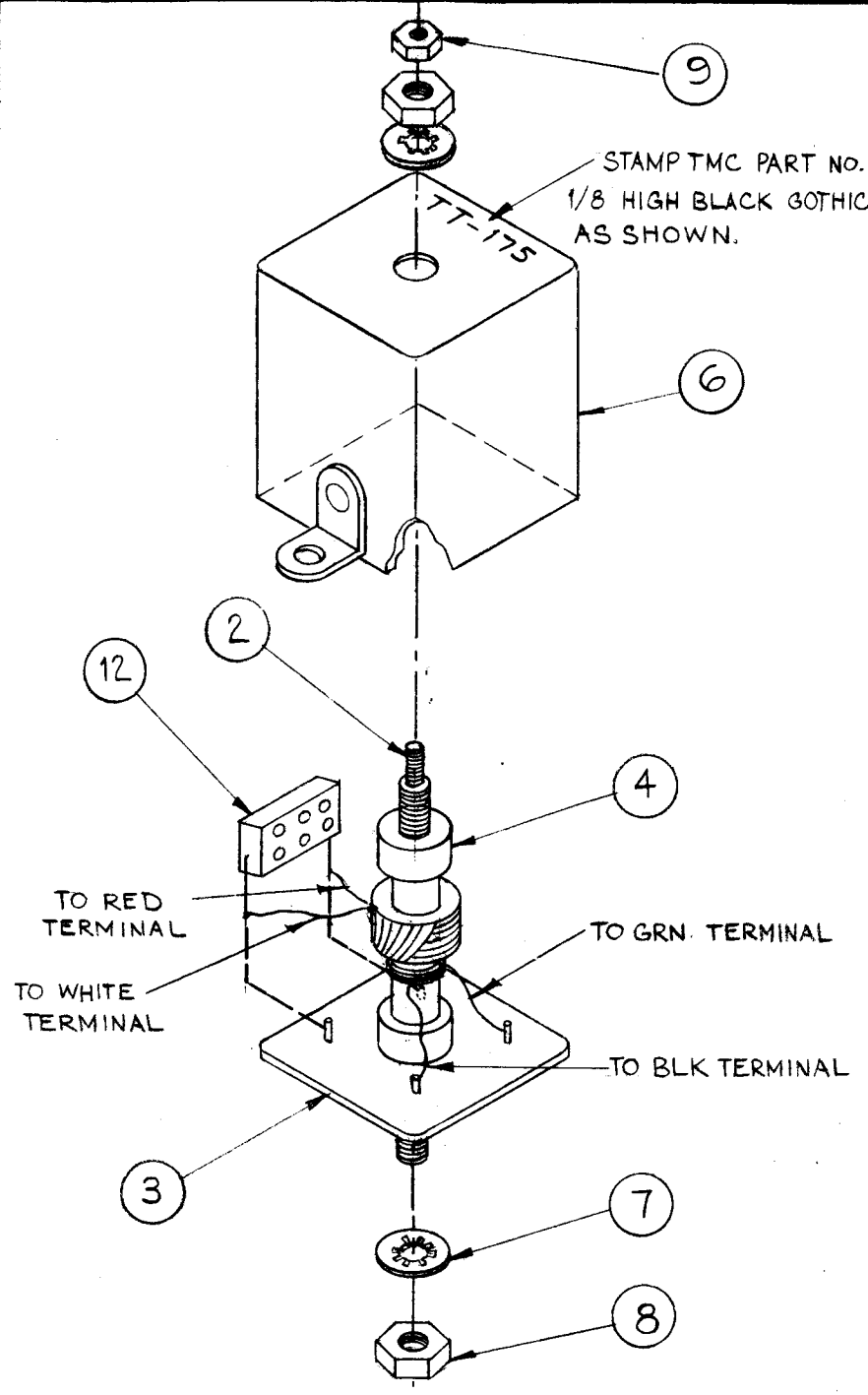
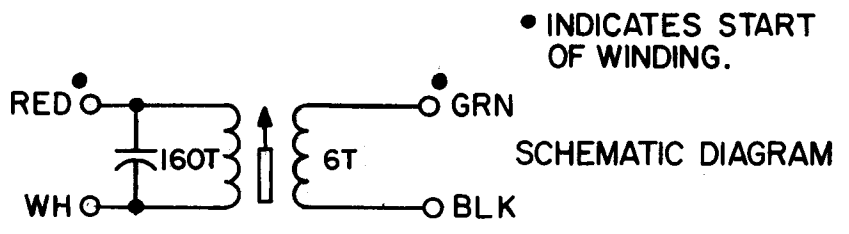
THE CONTENTS OF THIS DRAWING ARE THE EXCLUSIVE PROPERTY OF THE TECHNICAL MATERIEL CORP. ITS UNAUTHORIZED USE OR REPRODUCTION IN WHOLE OR IN PART IS STRICTLY FORBIDDEN.

COIL DATA		
SPECIFICATIONS	PRIMARY	SECONDARY
CAM	.250	TEST WITH OHMMETER FOR CONTINUITY ONLY.
CAM GEAR	105	
CAM DRIVER	69	
IND ± 10%	140 μh	
Q	40 OR GREATER	
TEST FREQ.	790 KC	
COND (μmf)	100	

WINDING DATA		
URNS	WI-107-17	WI-107-17
WIRE	WI-107-17	WI-107-17

WINDING INSTRUCTIONS

- 1- WIND PRIMARY 160 TURNS (ITEM 5) STARTING 1/4 FROM END OF COIL FORM. STAKE ENDS WITH GL-103 (ITEM 10).
  - 2- CLOSE WIND SECONDARY 6 TURNS (ITEM 5) STARTING 1/16 FROM END OF PRIMARY WINDING. STAKE ENDS WITH GL-103 (ITEM 10).
  - 3- COLOR CODE COIL BASE AS SHOWN.
  - 4- STRIP & TIN LEADS. SOLDER THEM TO PROPER COLOR-CODED TERMINALS ON BASE.
  - 5- MEASURE Q, IND. & RES. W/O CORE
  - 6- BAKE FOR 1/2 HOUR AT 215°F. SATURATE COILS WITH GL-104-2 (ITEM 11).
  - 7- BAKE HARD FOR 1/2 HOUR AT 215°F.
  - 8- SOLDER COMPONENT LEADS TO TERMINALS.
  - 9- ASSEMBLE AS PER ASSEMBLY DRAWING. PLACE IN CAN.
- NOTE:  
USE BOONTON CORP. Q METER MODEL 160 A OR EQUIV.



REQ.	ITEM	PART NO.	STRUMER DESCRIPTION	SYMBOL
X	13	BS-100	SOLDER, SOFT	
1	12	CM15C101J03	CAPACITOR, FIXED MICA	
X	11	GL-104-2	INSULEX, U85	
X	10	GL-103	DUCO	
1	9	NTH0348BNG	NUT, HEX	
2	8	NTH0832BN10	NUT, HEX	
2	7	LW108MRN	LOCKWASHER, INTERNAL	
1	6	A-1950-4	CAN ASS'Y	
X	5	WI-107-17	MAGNET WIRE, #36 DSB	
2	4	SM-140-2	BUSHING, COIL MTG.	
1	3	PX-585-1	TERMINAL BOARD, TRANSF. 4 LUGS	
1	2	CI-116-6	CORE, TUNING	
1	1	CF-122-1.00	COIL FORM, .250 O.D.	

THE TECHNICAL MATERIEL CORP. MAMARONECK, NEW YORK	
TT-175 ASS'Y (TRANSF, RF TUNED, 1MC) 3500 DECK	
G.D.L.	<i>[Signature]</i>
DRAWN	CHECKED
FINAL APPROVAL	
A-2444	

SYM	DESCRIPTION	DATE	CH. NO.	DRAFTS	CHECKER	ENG. APP.
A	IT. 12 P/N W/ CM15B101G	8/21/72	20799	GE	EJ	EJ

UNLESS OTHERWISE SPECIFIED:  
DIMENSIONS ARE IN INCHES  
TOLERANCES ON FRACTIONS ± 1/64 DECIMALS ± .005 ANGLES ± 1/2°

SCALE: DO NOT SCALE  
MAXIMUM ALLOWABLE TOLERANCES HAVE BEEN DETERMINED AND ANY DEVIATIONS WILL BE CAUSE FOR REJECTION. REMOVE ALL BURRS AND SHARP EDGES

REQ. PER UNIT	MODEL	SECTION	ASS'Y. NO.	DATE
1	HFS-1	3500		8-15-62

USED ON