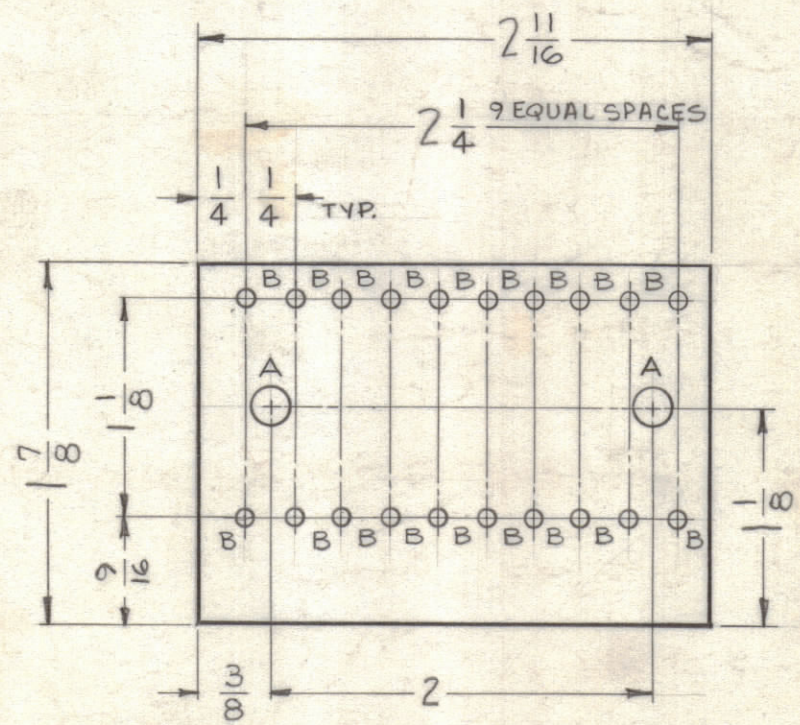


LEGEND		
HOLE	DESCRIPTION	REQ.
A	3/16 DIA.	2
B	.073 DIA DRILL	20

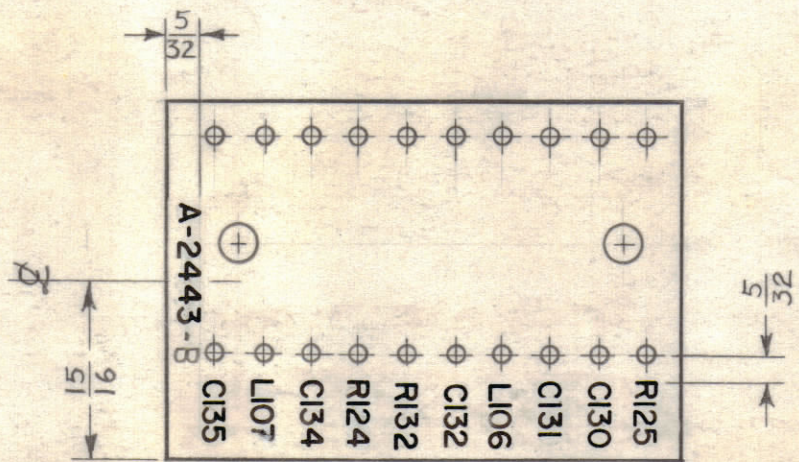
— UNLESS OTHERWISE SPECIFIED —

1- ALL LETTERING TO BE 1/8 HIGH, BLACK GOTHIC.
 2- MARKING PROCESS: AS PER TMC SPECIFICATION S-727.
 3- ALL LETTERING TO BE CENTERED ON HOLES.

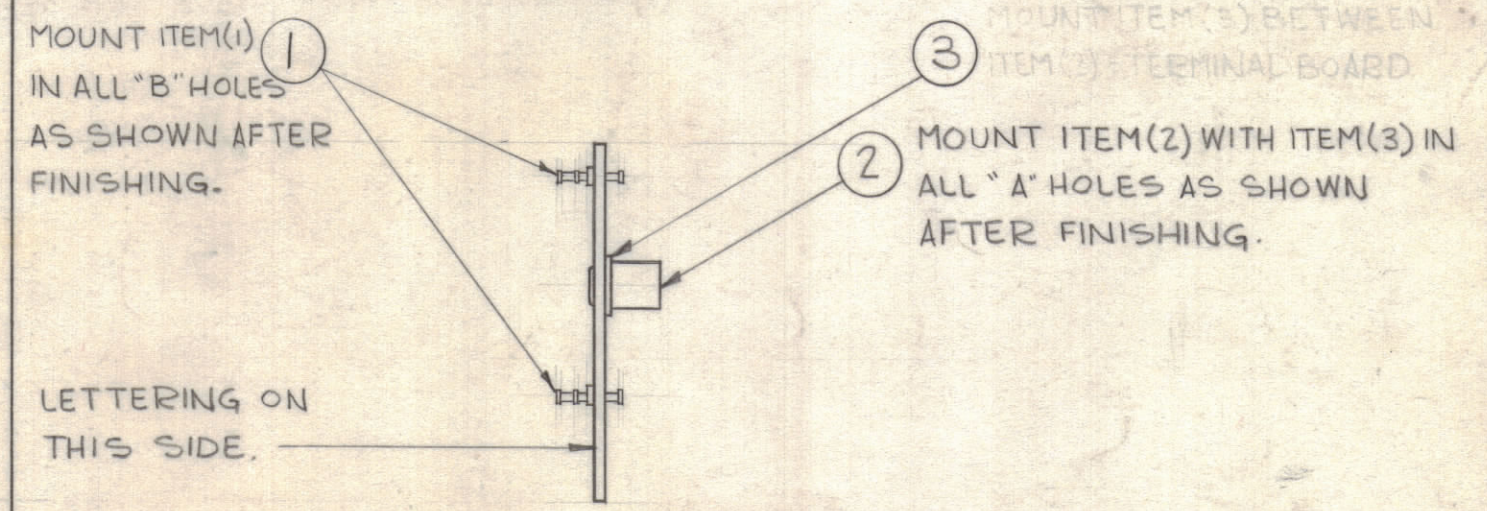
REVISIONS							
ZONE	SYM	DESCRIPTION	DATE	E.M.N. NO.	DRAFT	CHKD	APPD.
HG	A	"B" HOLES WERE .082 DIA.	6/3/63	9111			
D2	B	ITEMS (14) THRU (20) ADDED TO BUILD UP & STAGE 4	12/27/63	10659			
H	C	ADDED ITEM # 21 TO BUILD UP & STAGE 4	3-18-64	11033	AM		



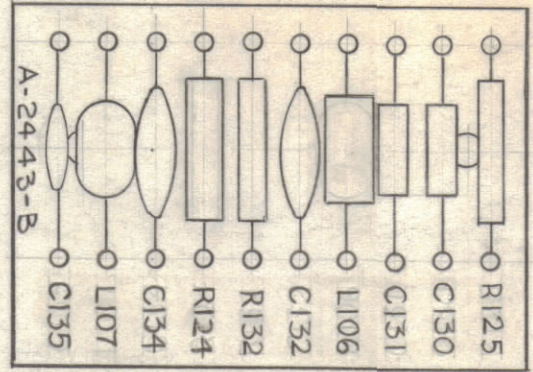
STAGE 1 ~ MACHINING (A-2443-1)
 1/16THK, XXXP PHENOLIC, NATURAL



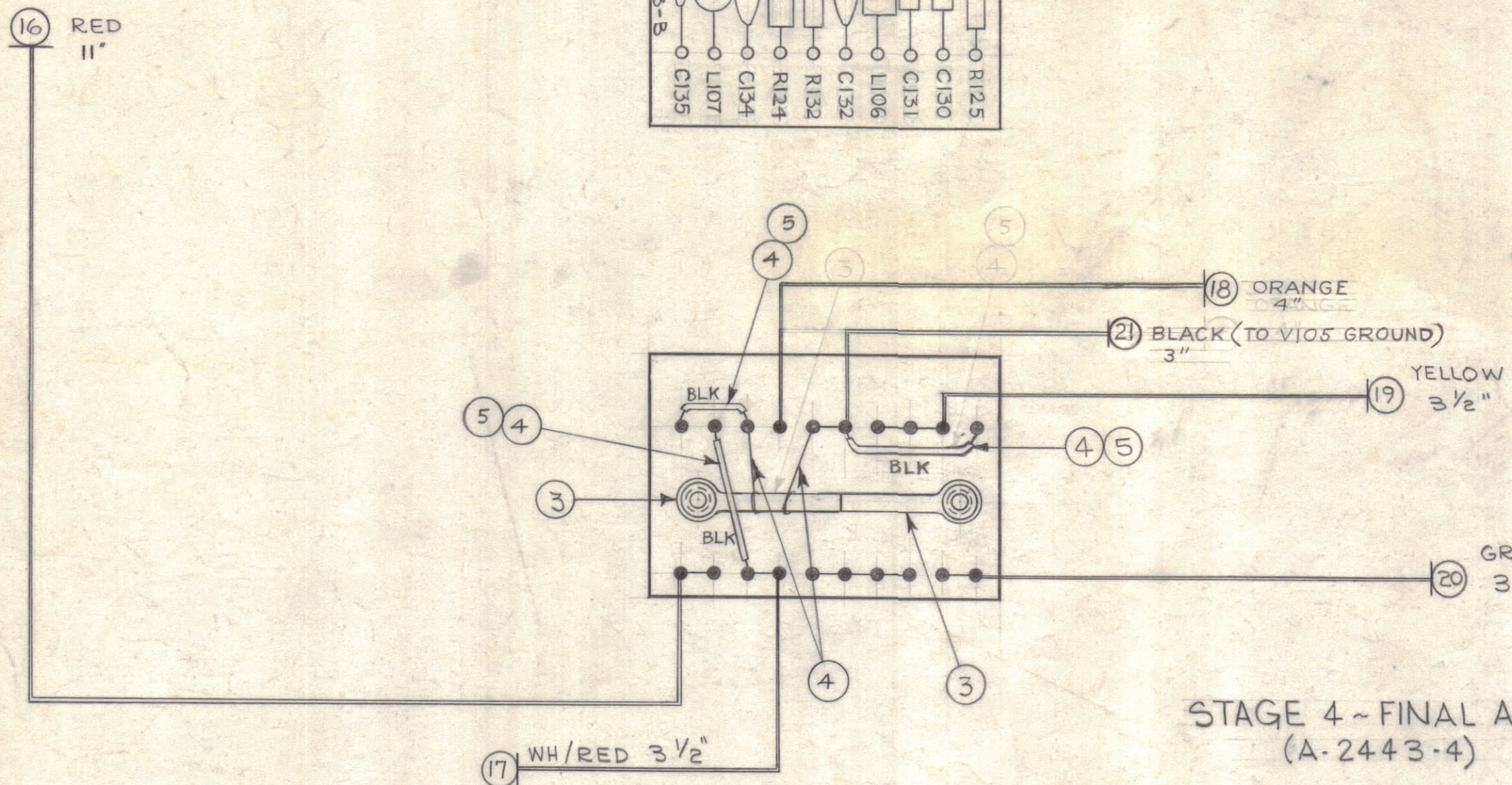
STAGE 2 ~ LETTERING (A-2443-2)



STAGE 3 ~ SUB-ASSY (A-2443-3)



STAGE 4 ~ FINAL ASS'Y (A-2443-4)



SOLDER ALL CONNECTIONS IN THIS ASSY. EXCEPT AS INDICATED BY ●

QTY	ITEM	PART NUMBER	DESCRIPTION	SYMBOL
3"	21	MWC 22 (7) U0	WIRE, ELECTRICAL (BLK)	
3 1/2"	20	MWC 22 (7) U5	WIRE, ELECTRICAL (GRN)	
3 1/2"	19	U 4	(YEL)	
4"	18	U 3	(ORN)	
3 1/2"	17	U 92	(WH/RED)	
11"	16	MWC 22 (7) U2	WIRE, HOOK UP (RED)	
X	15	BS-100	SOLDER, SOFT	
1	14	RC20GF 101J	RESISTOR, FIXED, COMPOSITION	R132
1	13	RC20GF 333K	RESISTOR, FIXED, COMPOSITION	R125
1	12	RC20GF 123K	RESISTOR, FIXED, COMPOSITION	R124
1	11	CM20C331K	CAPACITOR, FIXED, MICA	C131
1	10	CM15C150K	CAPACITOR, FIXED, MICA	C130
1	9	CL-240-47	COIL, RF, FIXED, MOULDED	L106
1	8	CL-140-1	COIL, RF, FIXED, MOULDED	L107
1	7	CC-100-16	CAPACITOR, FIXED, CERAMIC DISC	C135
2	6	CC-100-24	CAPACITOR, FIXED, CERAMIC DISC	C132 C134
X	5	PX-104-1-.034	SLEEVING, INSULATED	BLACK
X	4	WL-100-7	BUSS BAR, TINNED	
2	3	TE-116-3	LUG, SOLDER	A
2	2	TE-108-2	STANDOFF, RIVET TYPE	A
20	1	TE-168-4B	TERMINAL, MINIATURE	B

6. STRUMER		LIST OF MATERIAL	
MATERIAL	SEE STAGE 1	THE TECHNICAL MATERIEL CORP. MAMARONECK, NEW YORK	
FINISH	SEE STAGE 1	TITLE TERMINAL BOARD # COMPONENT ASSY	
UNLESS OTHERWISE SPECIFIED DIMENSIONS ARE IN INCHES AND INCLUDE CHEMICALLY APPLIED OR PLATED FINISHES	DRAWN G. Jansen	DATE 2-18-63	FINAL APPROVAL BP
DECIMALS .X ± .05 .XX ± .01 .XXX ± .005	CHECKED JHE	DATE 2-18-63	DATE 3-18-63
FRACTIONS ± 1/64	ELECT. DES. J.M.S.	DATE 2-18-63	DATE 2-18-63
TOLERANCES ANGLES ± 0° 30'	MECH. DES. B. Hoshani	DATE 2-18-63	DATE 2-18-63
		A-2443	
		SHEET	
		REV. LTR.	

QTY/UNIT	MODEL USED ON	ASS'Y. NO.
SCALE	CODE	
FULL		
THE CONTENTS OF THIS DRAWING ARE THE EXCLUSIVE PROPERTY OF THE TECHNICAL MATERIEL CORP. ITS UNAUTHORIZED USE OR REPRODUCTION IN WHOLE OR IN PART IS STRICTLY FORBIDDEN.		

NOTES

A-2443