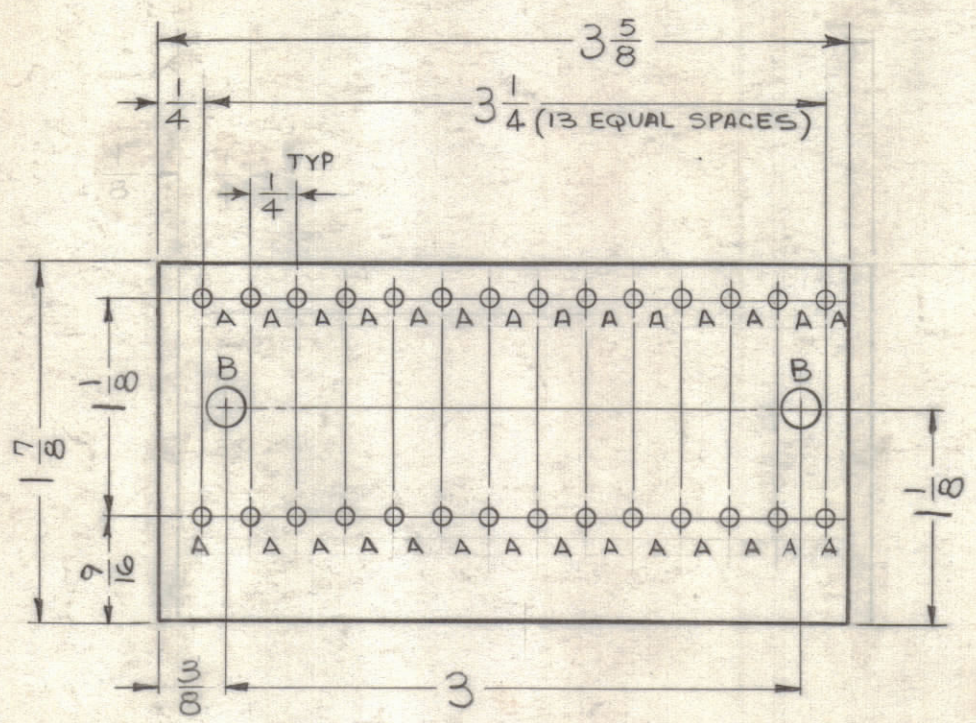
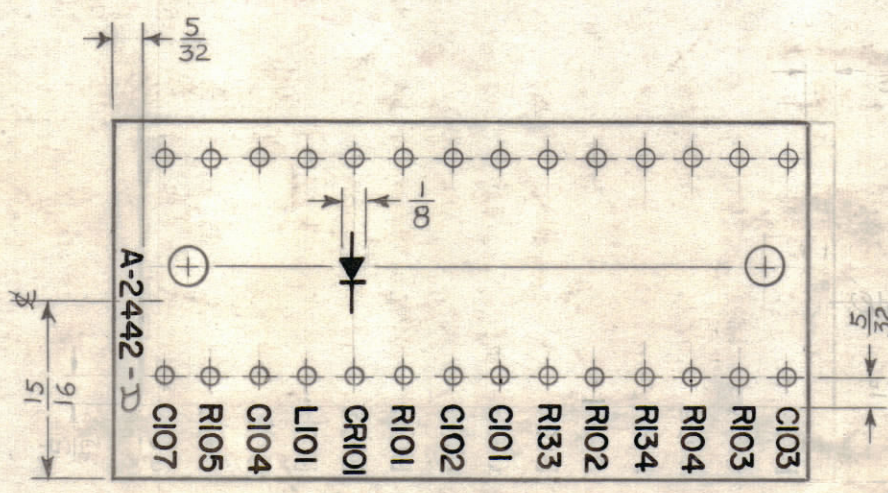


LEGEND		
HOLE	DESCRIPTION	REQ
A	.073 DIA	28
B	3/16 DIA	2

— UNLESS OTHERWISE SPECIFIED —  
 1- ALL LETTERING TO BE 1/8 HIGH, BLACK GOTHIC.  
 2- MARKING PROCESS: USE TMC SPECIFICATION S-727.  
 3- LETTERING TO BE CENTERED ON HOLES, OR INDICATING LINES.

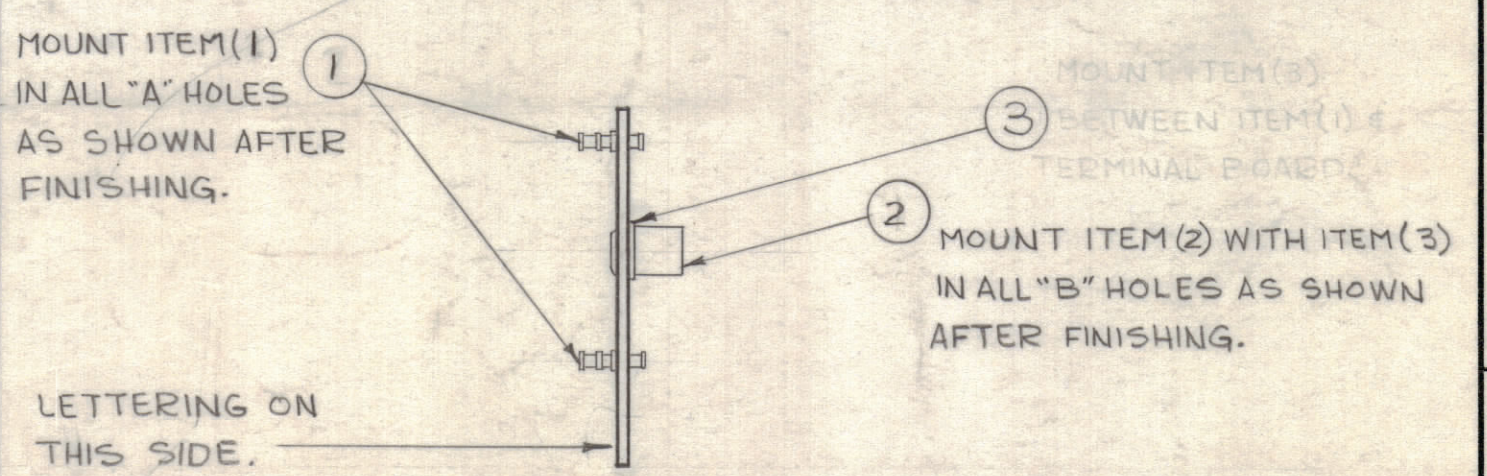


STAGE 1 - MACHINING (A-2442-1)  
 1/16 THK, XXXP PHENOLIC, NATURAL.

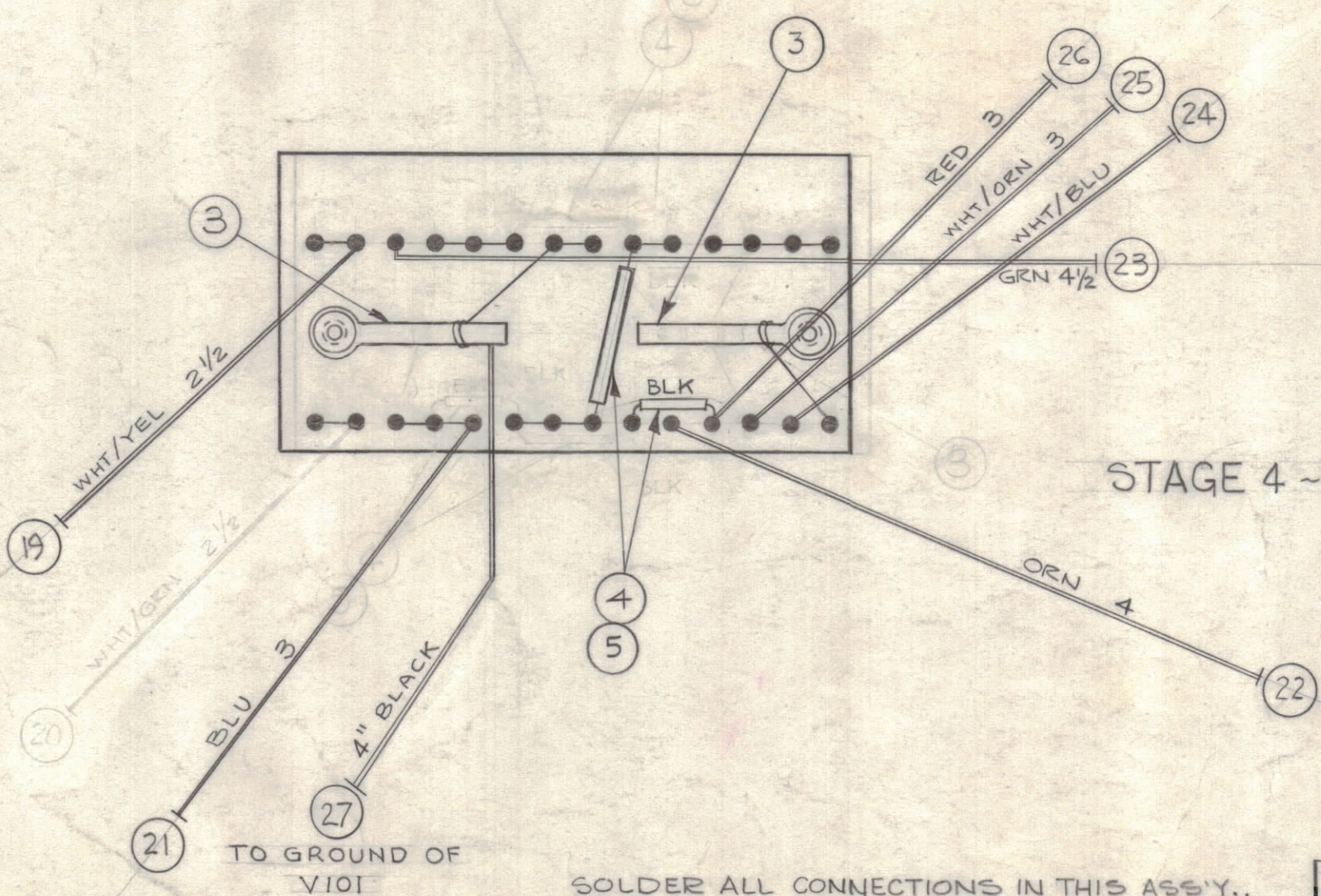
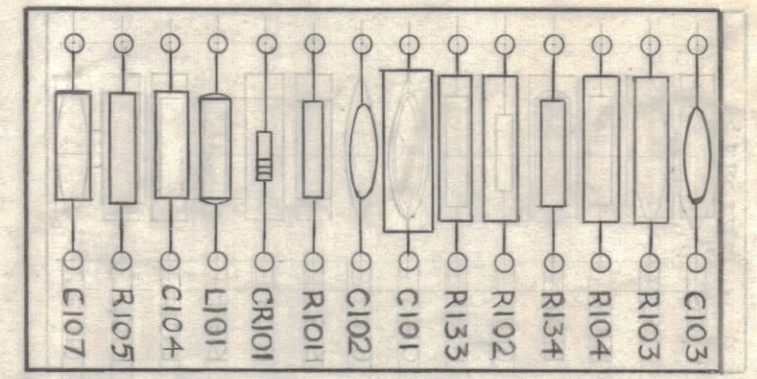


STAGE 2 - LETTERING (A-2442-2)

REVISIONS									
ZONE	SYM	DESCRIPTION	DATE	E.M.N. NO.	DRAFT	CHKD	APPD		
C3, H6	A	ITEM (1) QTY WAS 1; ON A-2442-1YA HOLES WERE .062 DIA.	2-3-63	5122	SE	JP	JP		
C2	B	ITEM (3) WAS CC-100-32	7-3-63	9436	SE	JP	JP		
C6	C	CLARIFIED & CORRECTED STAGE 4 PER SCHEMATIC	9/24/63	10063	DD	JP	JP		
-	D	UPDATED & CLARIFIED	1/22/63	10659	JP	JP	JP		
-	E	ITEM NO. 27 ADDED; P/O NOTE DELETED	3.9.64	10994	JP	JP	JP		
-	F	ITEM "20" DELETED	11-2-64	12816	JP	JP	JP		



STAGE 3 - SUB-ASSY (A-2442-3)



STAGE 4 - FINAL ASSY (A-2442-4)

SOLDER ALL CONNECTIONS IN THIS ASSY.,  
 EXCEPT AS INDICATED BY Ⓞ

4"	27	MWC22(7) U0	WIRE HOOK UP	BLACK
3"	26	MWC22(7) U2	WIRE HOOK UP	RED
3"	25	U93		WHT/ORN
3"	24	U96		WHT/BLU
4 1/2"	23	U5		GRN
4"	22	U3		ORN
3"	21	MWC22(7) U6	WIRE HOOK UP	BLU
2"	20	DELETED U95	DELETED	BLU
2 1/2"	19	MWC22(7) U94	WIRE, HOOK UP	WHT/YEL
1"	18	DD-102-1	DIODE, GERMANIUM	CR101
1"	17	RC20GF222J	RESISTOR, FIXED, COMPOSITION	R134
1"	16	RC20GF473J	RESISTOR, FIXED, COMPOSITION	R105
1"	15	RC20GF101J	RESISTOR, FIXED, COMPOSITION	R101
1"	14	CM20C681K	CAPACITOR, FIXED, MICA	C104
1"	13	RC32GF392K	RESISTOR, FIXED, COMPOSITION	R133
1"	12	RC32GF561K	RESISTOR, FIXED, COMPOSITION	R103
2	11	RC32GF153K	RESISTOR, FIXED, COMPOSITION	R102, R104
2	10	CC-100-16	CAPACITOR, FIXED, CERAMIC	C102, C103
1	9	CN-114-R10-4-J	CAPACITOR, FIXED, MYLAR	C101
1	8	CL240-1.2	COIL, RF, FIXED, MOULDED	L101
1	7	CM15C240J	CAPACITOR, FIXED, MICA	C107
X	6	BS-100	SOLDER, SOFT	
X	5	PX-104-1-.034	SLEEVING, INSULATION	BLACK
X	4	WL-100-7	BUSS BAR TINNED	
2	3	TE-116-3	LUG, SOLDER	B
2	2	TE-108-2	STANDOFF, RIVET TYPE	B
28	1	TE-168-4B	TERMINAL, MINATURE	A

REQ'D.	ITEM	PART NUMBER	DESCRIPTION	SYMBOL
J. STRUMER LIST OF MATERIAL				
MATERIAL			THE TECHNICAL MATERIEL CORP. MAMARONECK, NEW YORK	
FINISH			TITLE	
SEE STAGE-1			TERMINAL BOARD & COMPONENT ASSY	
SEE STAGE-1			DRAWN: J. Strumer	
UNLESS OTHERWISE SPECIFIED DIMENSIONS ARE IN INCHES AND INCLUDE CHEMICALLY APPLIED OR PLATED FINISHES			DATE: 2-21-63	
DECIMALS: .X ± .05, .XX ± .01, .XXX ± .005			CHECKED: [Signature]	
FRACTIONS: 1/64 ANGLES: ± 0° 30'			DATE: 3-18-63	
TOLERANCES: ± 1/64 ANGLES: ± 0° 30'			ELECT. DES: [Signature]	
			MECH. DES: [Signature]	
			DATE: 3-18-63	
			SHEET: A-2442	
			REV. LTR: F	

1 TRX-1		
Q'TY./UNIT	MODEL USED ON	ASS'Y. NO.
SCALE FULL	CODE	
THE CONTENTS OF THIS DRAWING ARE THE EXCLUSIVE PROPERTY OF THE TECHNICAL MATERIEL CORP. ITS UNAUTHORIZED USE OR REPRODUCTION IN WHOLE OR IN PART IS STRICTLY FORBIDDEN.		

NOTES