

LEGEND		
HOLE	DESCRIPTION	REQ.
A	.082 DIA.	28
B	3/16 DIA.	2

— UNLESS OTHERWISE SPECIFIED —

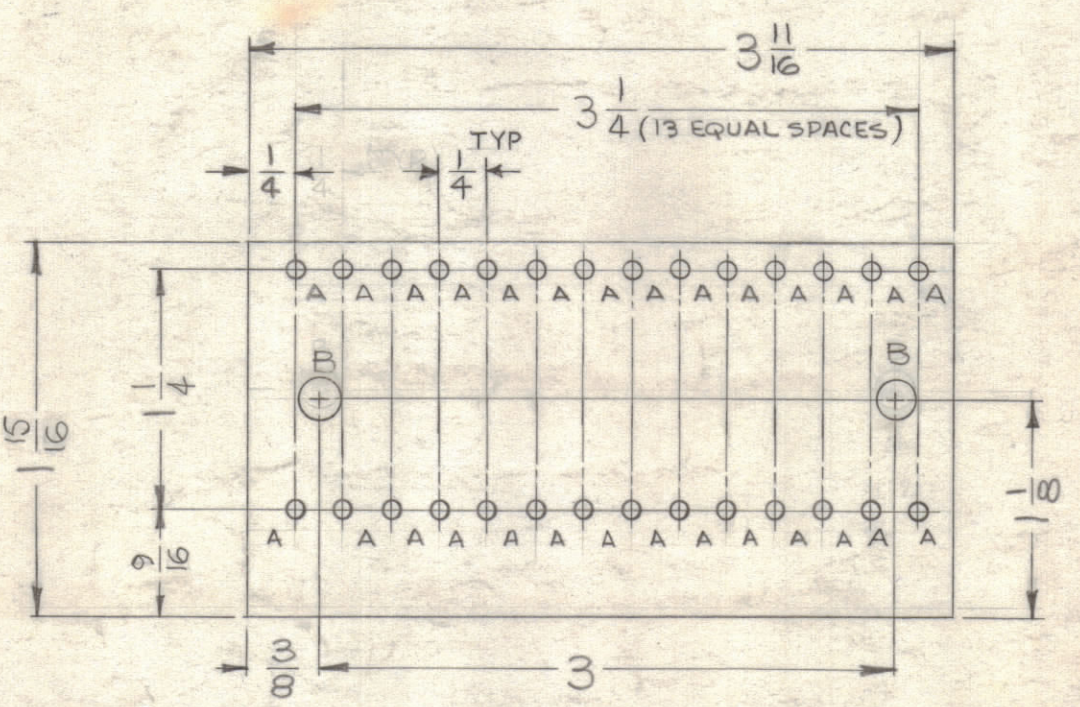
1~ ALL LETTERING TO BE 1/8 HIGH, BLACK GOTHIC.
 2~ MARKING PROCESS: USE TMC SPECIFICATION S-727.
 3~ LETTERING TO BE CENTERED ON HOLES, AND AS OTHERWISE INDICATED.

REVISIONS							
ZONE	SYM	DESCRIPTION	DATE	E.M.N. NO.	DRAFT	CHKD	APPD.
—	A	UPDATED & CLARIFIED DWG	12/1/63	10657	EDD	WLB	WLB
—	B	ADD ITEM "23"	3/6/64	10970	A.M.	JYS	WLB

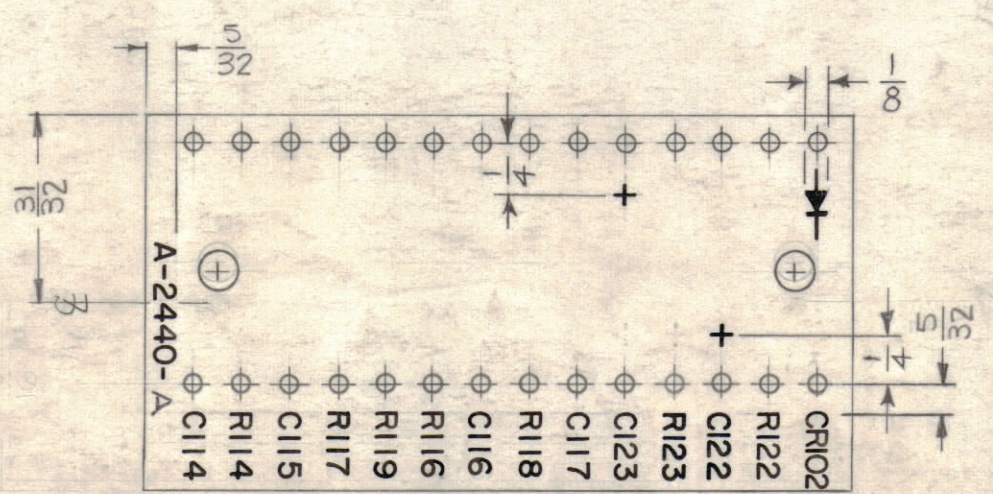
H

G

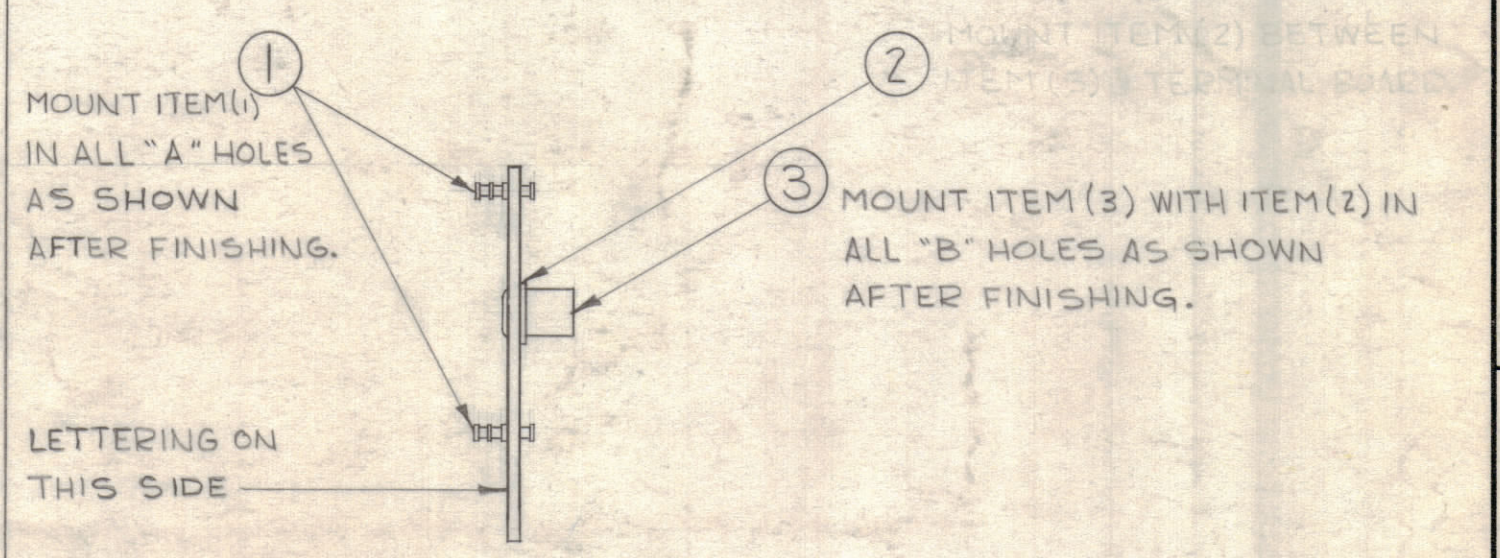
F



STAGE 1 - MACHINING (A-2440-1)
 1/16 THK., XXXP PHENOLIC, NATURAL

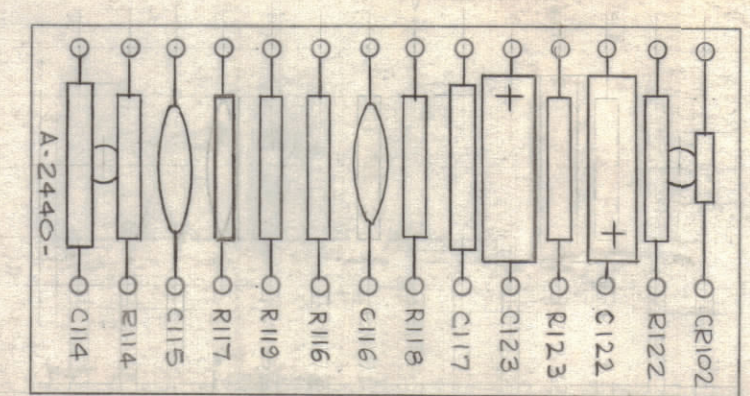


STAGE 2 - LETTERING (A-2440-2)



STAGE 3 - SUB-ASS'Y (A-2440-3)

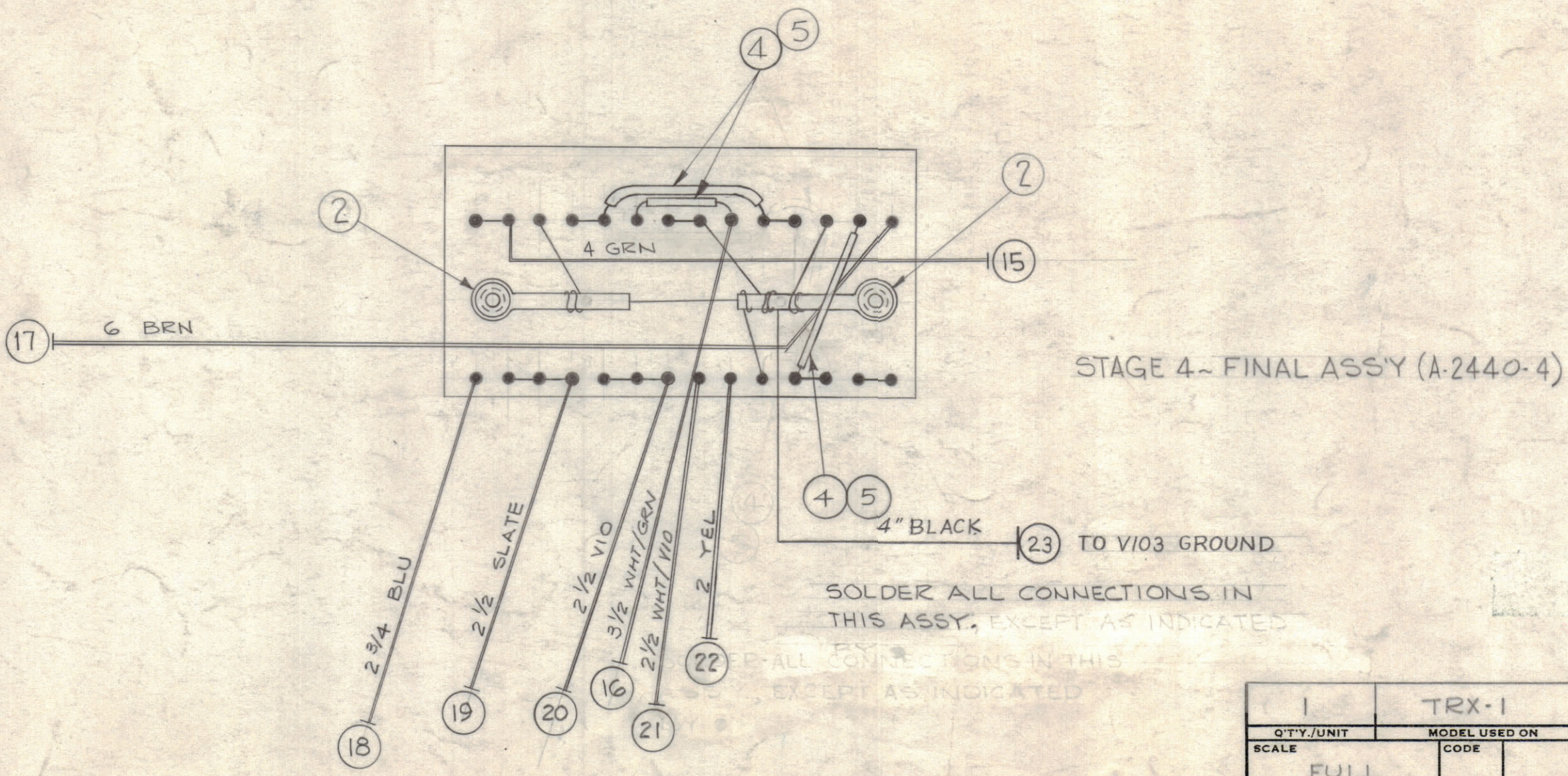
E



D

REQ'D.	ITEM	PART NUMBER	DESCRIPTION	SYMBOL
4"	23	MWC 22(7)U0	WIRE, HOOK UP	BLACK
2"	22	MWC 22(7)U4	WIRE, HOOK UP	YEL
2 1/2"	21	U97		WHT/VIO
2 1/2"	20	U7		VIO
2 1/2"	19	U8		GRAY
2 3/4"	18	U6		BLU
6"	17	U1		BRN
3 1/2"	16	U95	WIRE, HOOK UP	WHT/GRN
4"	15	MWC 22(7)U5	WIRE, HOOK UP	GRN
1	14	1N34A	DIODE, GERMANIUM	CR102
2	13	CE105-125-15	CAPACITOR, FIXED, ELECTROLYTIC	C122 C123
2	12	CM20C471K	CAPACITOR, FIXED, MICA	C114 C117
2	11	CC-100-28	CAPACITOR, FIXED, CERAMIC	C115 C116
1	10	RC20GF151K	RESISTOR, FIXED, COMPOSITION	R122
2	9	RC20GF392K	RESISTOR, FIXED, COMPOSITION	R116 R114
2	8	RC20GF102K	RESISTOR, FIXED, COMPOSITION	R118 R123
2	7	RC20GF682K	RESISTOR, FIXED, COMPOSITION	R117 R119
X	6	BS-100	SOLDER, SOFT	
X	5	PX-104-1-.034	SLEEVING, INSULATION	BLACK
X	4	WL-100-7	BUSS BAR, TINNED	
2	3	TE-108-2	STANDOFF, RIVET TYPE	B
2	2	TE-116-3	LUG, SOLDER	B
28	1	TE-168-4B	TERMINAL, MINATURE	A

C



STAGE 4 - FINAL ASS'Y (A-2440-4)

B

A

NOTES

1	TRX-1	
Q'TY./UNIT	MODEL USED ON	ASS'Y. NO.
SCALE	CODE	
FULL		

THE CONTENTS OF THIS DRAWING ARE THE EXCLUSIVE PROPERTY OF THE TECHNICAL MATERIEL CORP. ITS UNAUTHORIZED USE OR REPRODUCTION IN WHOLE OR IN PART IS STRICTLY FORBIDDEN.

J. STRUMER		LIST OF MATERIAL	
MATERIAL	SEE STAGE-1	THE TECHNICAL MATERIEL CORP. MAMARONECK, NEW YORK	
FINISH	SEE STAGE-1	TITLE: TERMINAL BOARD & COMPONENT ASS'Y.	
UNLESS OTHERWISE SPECIFIED DIMENSIONS ARE IN INCHES AND INCLUDE CHEMICALLY APPLIED OR PLATED FINISHES	DRAWN: J. Strumer	DATE: 2-22-63	FINAL APPROVAL: [Signature]
DECIMALS: .X ± .05, .XX ± .01, .XXX ± .005	CHECKED: [Signature]	DATE: 3-18-63	DATE: 3-18-63
FRACTIONS: ± 1/64, ANGLES: ± 0° 30'	ELECT. DES. [Signature]	DATE: 3-18-63	DATE: 3-18-63
TOLERANCES: ± 0° 30'	MECH. DES. [Signature]	DATE: 3-18-63	DATE: 3-18-63
		SHEET: A-2440	REV. LTR. B