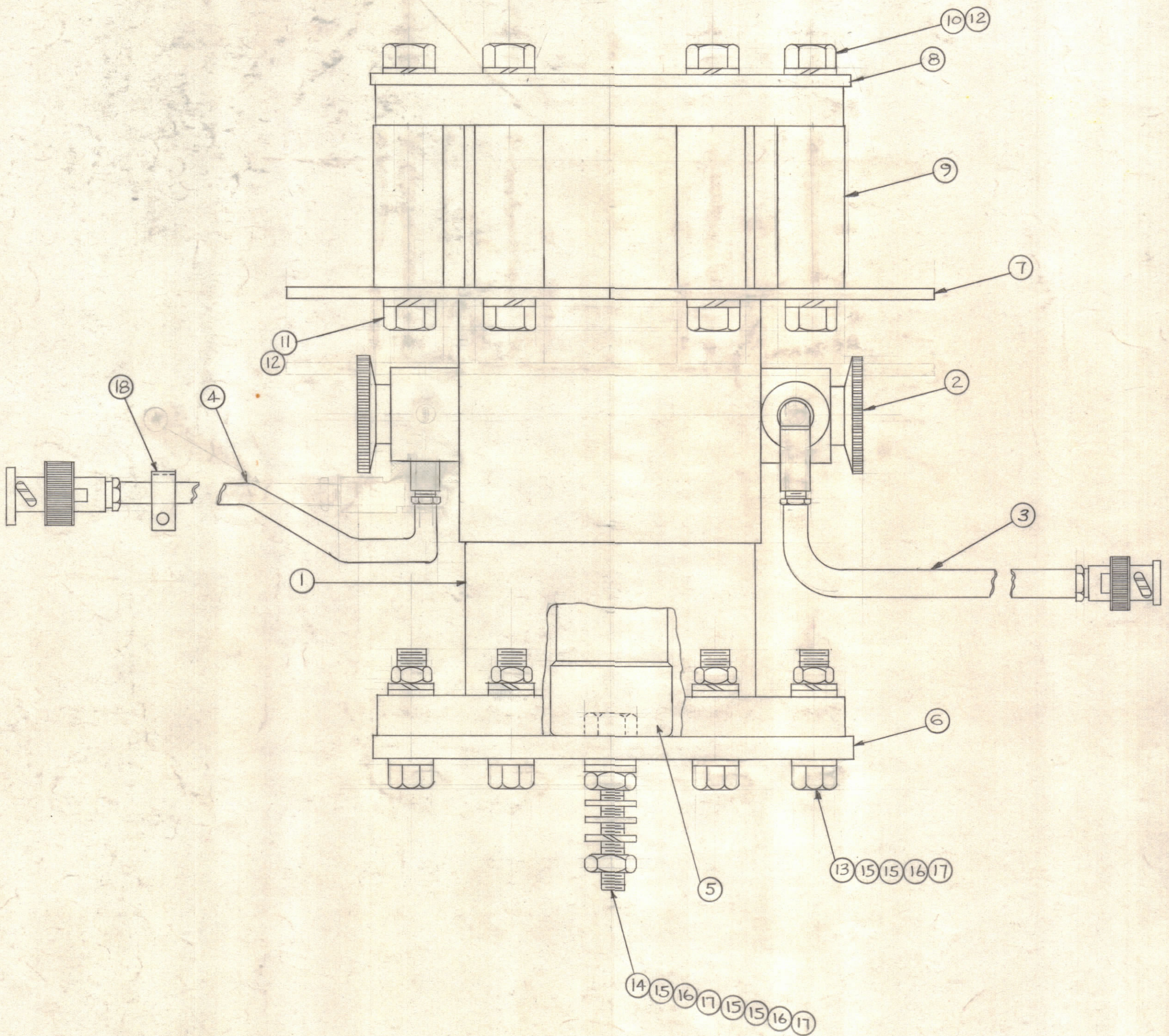


NOTICE TO PERSONS RECEIVING THIS DRAWING

THE TECHNICAL MATERIEL CORPORATION claims proprietary right in the material disclosed hereon. This drawing is issued in confidence for engineering information only and may not be reproduced or used to manufacture anything shown hereon without permission from THE TECHNICAL MATERIEL CORPORATION to the user. This drawing is loaned for mutual assistance and is subject to recall at any time.

Property of:
THE TECHNICAL MATERIEL CORPORATION
MAMARONECK, NEW YORK



1	18	CU-102-3	CLAMP, "G" TYPE	
8	17	NTH2520BN14	NUT, HEX	
8	16	LWS25MRN	LOCKWASHER, SPRING TYPE	
15	15	FW25HBN	WASHER, FLAT	
1	14	SCHH2520BN20	SCREW, MACHINE	
6	13	SCHH2520BN16	SCREW, MACHINE	
12	12	LWS37MRN	LOCKWASHER, SPRING TYPE	
6	11	SCHH3716BN10	SCREW, MACHINE	
6	10	SCHH3716BN16	SCREW, MACHINE	
6	9	TE3716AE24R	SPACER, THREADED	
1	8	MS-2360	PLATE, DC-100	
2	7	MS-2170/LD871	PLATE, DIRECTIONAL COUPLER	
1	6	PX-577	PLATE CONNECTOR, INNER CONDUCTOR	
1	5	PO-203-50	CONNECTOR, ELECTRICAL	
1	4	CA-480-112-13.50	CABLE, INTERCONNECT	W7303
1	3	CA-480-112-8.50	CABLE, INTERCONNECT	W7302
2	2	DD-103	DETECTING ELEMENT, DIRECTIONAL COUPLER	CR 7303 CR 7304
1	1	DC-101	THRULINE, DIRECTIONAL WATT METER	DC 7302

* NOTE:
BOTH DD103'S ARE PART OF DC101 (ITEM 1)

SYM	ZONE	DESCRIPTION	DATE	CH. NO.	DRAFTS	CHECKER	ENG. APP.
D		ADDED * AND NOTE	3-1-67	17874	RME		
C	B2	ITEM 3 WAS CA-577-1, ITEM 4 WAS CA-577-2	4-14-64	11204	NTB		
B	B1, B2	ADDED SYMBOLS TO ITEMS (1) THRU (4), ITEM (7) WAS MS 2107	3-14-63	8535	RC		
A		ITEM 11 WAS SCHH3116BN10, ITEM 12 WAS LWS 31MRN, ITEM 9 WAS TE3116AE24R, ITEM 10 WAS SCHH3116BN16	6-26-62	6837	R.T.		

UNLESS OTHERWISE SPECIFIED:
DIMENSIONS ARE IN INCHES
TOLERANCES ON FRACTIONS ± 1/64 DECIMALS ± .005 ANGLES ± 1/2°

SCALE DO NOT SCALE

MAXIMUM ALLOWABLE TOLERANCES HAVE BEEN DETERMINED AND ANY DEVIATIONS WILL BE CAUSE FOR REJECTION. REMOVE ALL BURRS & SHARP EDGES

1	KIT-126			4-23-62
REQ. PER UNIT	MODEL	SECTION	ASS'Y. NO.	DATE

REQ. ITEM	PART NO.	DESCRIPTION	SYMBOL
THE TECHNICAL MATERIEL CORP. MAMARONECK, NEW YORK			
DIRECTIONAL COUPLER ASSY			
MATERIAL		G. SENCEN	
TYPE & TEMPER		CHECKED	FINAL APPROVAL
FINISH & SPEC. NO.		A-2437 D	
ELEC. DES. APP.		MECH. DES. APP.	
SHEET		OF	