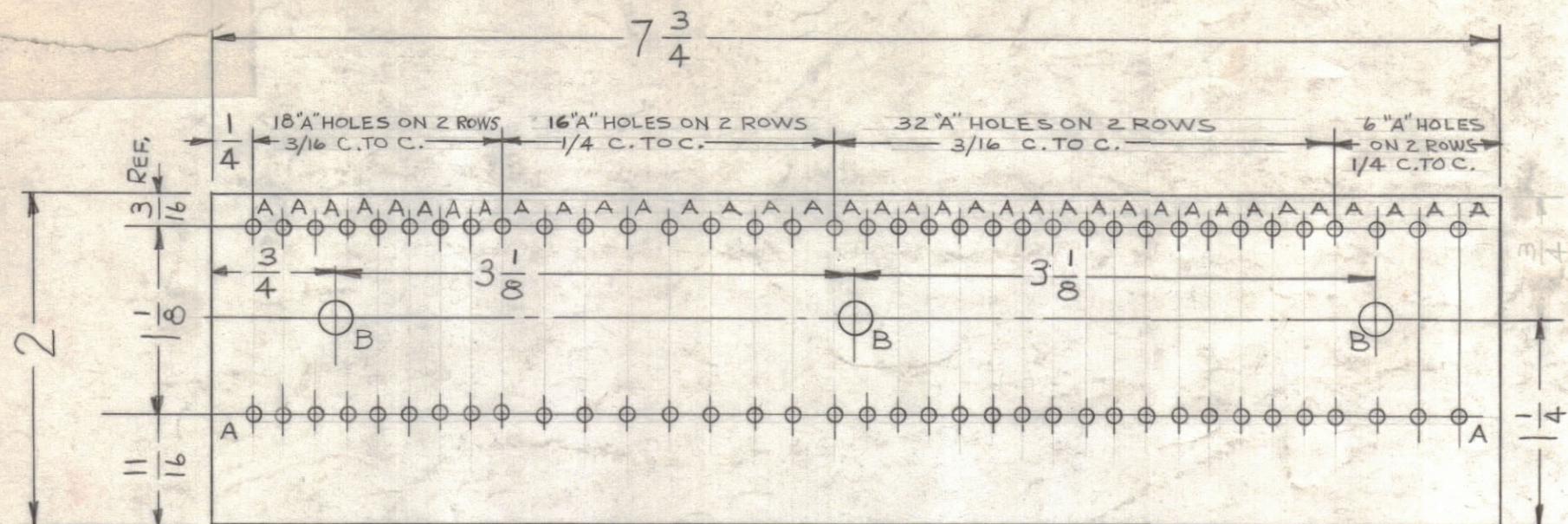


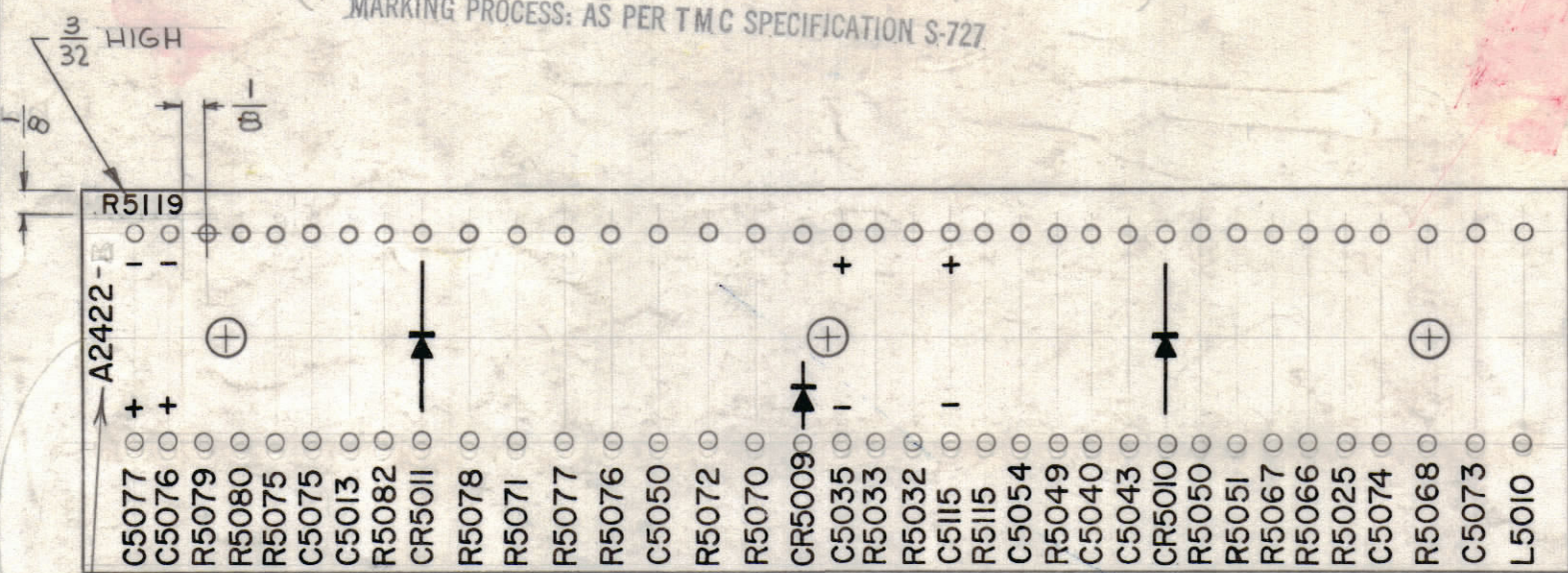
A ~ .078 DIA. 72 REQ.
B ~ .189 DIA. 3 "

~ UNLESS OTHERWISE SPECIFIED ~
ALL LETTERING TO BE 1/8 HIGH BLACK LUSTERLESS, GOTHIC
(PHOTO WRITING PROCESS OR EQUIV)
MARKING PROCESS: AS PER TMC SPECIFICATION S-727

A-2422 E

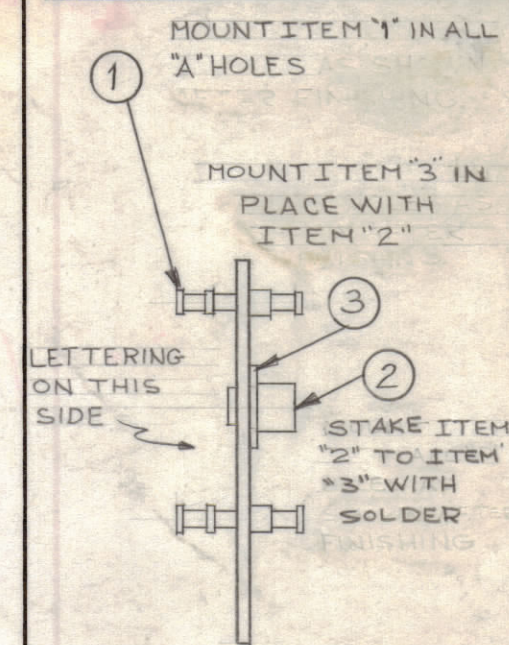


STAGE 1 - MACHINING (A-2422-1)
MATERIAL - 1/16 THK. XXX PHENOLIC NATURAL

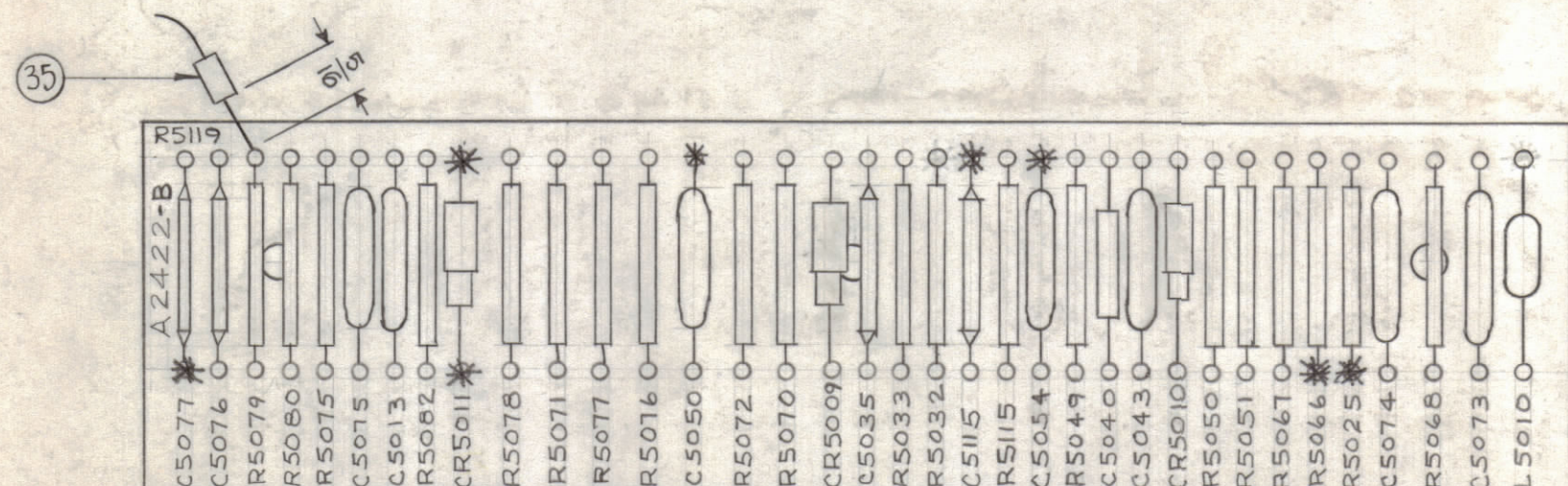


STAGE 2 - LETTERING (A-2422-2)

MARK TMC NO. W/ LATEST REV. LETTER.



STAGE 3 - SUB ASSY (A-2422-3)



STAGE 4 - FINAL ASSY (A-2422-4)

LEGEND

HOLE DESCRIPTION	REQ
A .078 DIA.	72
B .189 DIA.	3

NOTICE TO PERSONS RECEIVING THIS DRAWING
THE TECHNICAL MATERIEL CORPORATION claims proprietary right in the material disclosed hereon. This drawing is issued in confidence for engineering information only and may not be reproduced or used to manufacture anything shown hereon without permission from THE TECHNICAL MATERIEL CORPORATION to the user. This drawing is loaned for mutual assistance and is subject to recall at any time.

Property of:
THE TECHNICAL MATERIEL CORPORATION
MAMARONECK, NEW YORK
1 - ALL SLEEVING TO BE...
SHORTER...
2 - SOLDER ALL CORNERS...

1	35	RC20GF472J	RESISTOR, FIXED, COMPOSITION	R5119
X	34	BS-100	SOLDER, SOFT	
X	33	WL-100-7	WIRE, BUSS	
3 1/2	32	PX-104-7-.034	SLEEVING, INSULATION	GRAY
1 1/4	31	PX-104-6-.034	SLEEVING, INSULATION	BLUE
7 1/2	30	PX-104-9-.034		VIO.
5 3/4	29	PX-104-8-.034		ORN.
7 1/2	28	PX-104-2-.034		YEL.
9 1/4	27	PX-104-4-.034		GRN.
11 3/4	26	PX-104-3-.034	SLEEVING INSULATION	RED
1	25	RC20GF184J	RESISTOR, FIXED COMPOSITION	R5025
1	24	CL-140-1	COIL, RF, MOLDED	L5010
1	23	CC-100-37	CAPACITOR, FIXED, CERAMIC	C5073
2	22	RC20GF474J	RESISTOR, FIXED, COMPOSITION	R5067 R5066 R5051 R5079
2	21	RC20GF224J		
1	20	RC20GF124J	RESISTOR, FIXED, COMPOSITION	R5050
1	19	IN463	DIODE	CR5010
3	18	RC20GF104J	RESISTOR, FIXED, COMPOSITION	
2	17	RC20GF272J	RESISTOR, FIXED, COMPOSITION	R5032 R5033
1	16	IN752	DIODE	CR5009
1	15	RC32GF153J	RESISTOR, FIXED, COMPOSITION	R5070
1	14	273J		R5076
1	13	562J		R5077
3	12	223J		
1	11	RC32GF473J	RESISTOR, FIXED, COMPOSITION	R5078
1	10	IN39A	DIODE	CR5011
1	9	RC20GF272J	RESISTOR, FIXED, COMPOSITION	R5082
5	8	CC-100-28	CAPACITOR, FIXED, CERAMIC	
1	7	RC20GF474J	RESISTOR, FIXED, COMPOSITION	R5075
1	6	CM15F511J	CAPACITOR, FIXED, MICA	C5040
1	5	CC-100-16	CAPACITOR, FIXED, CERAMIC	C5074
4	4	CE-107-1	CAPACITOR, FIXED, ELECTROLYTIC	
1	3	MS-202-33-7.75	STRIP, COPPER, TERMINAL BOARD GROUND	
3	2	TE-108-6	STANDOFF, RIVET TYPE	
72	1	TE-168-4-B	TERMINAL, MINIATURE	

NOTES:
1 - * DENOTES DO NOT SOLDER PORTER THAN BUSS WIRE.
2 - • DENOTES SOLDER CONNECTIONS TO GROUND STRAP (ITEM 3)
3 - * DENOTES DO NOT SOLDER

SYM	ZONE	DESCRIPTION	DATE	CH. NO.	DRAFTS	CHECKER	ENG. APP.
E		CHGD 'K' TO 'J' IT 6 WAS CM15C511K	11/21/66	17290	RME		
D		IT 25 WAS RC20GF334K ON L5010	8/17/65	14818	MVW		
C	B7,6,5	LENGTHS OF WIRES ON STAGE 4 REVISED	8-6-64	12057	MB		
B	D3	ITEM (23) WAS CC-100-32	8-7-63	9736	AC		
A	F2	ITEM (35) ADDED	3-27-63	8665			

UNLESS OTHERWISE SPECIFIED:
DIMENSIONS ARE IN INCHES
TOLERANCES ON
FRACTIONS ± 1/64 DECIMALS ± .005 ANGLES ± 1/2°
SCALE
MAXIMUM ALLOWABLE TOLERANCES HAVE BEEN DETERMINED AND ANY DEVIATIONS WILL BE CAUSE FOR REJECTION. REMOVE ALL BURRS & SHARP EDGES

REQ. PER UNIT	MODEL	SECTION	ASSY. NO.	DATE
1	AFC-3			7-26-62

REQ.	ITEM	PART NO.	W. WESCHLER	DESCRIPTION	SYMBOL
SEE STAGE - 1					
STOCK SIZE			THE TECHNICAL MATERIEL CORP. MAMARONECK, NEW YORK		
SEE STAGE - 1					
MATERIAL					
TYPE & TEMPER HEAT TREAT. SPEC.					
SEE STAGE - 1					
FINISH & SPEC. NO.					
ELEC. DES. APP. MECH. DES. APP. SHEET OF					