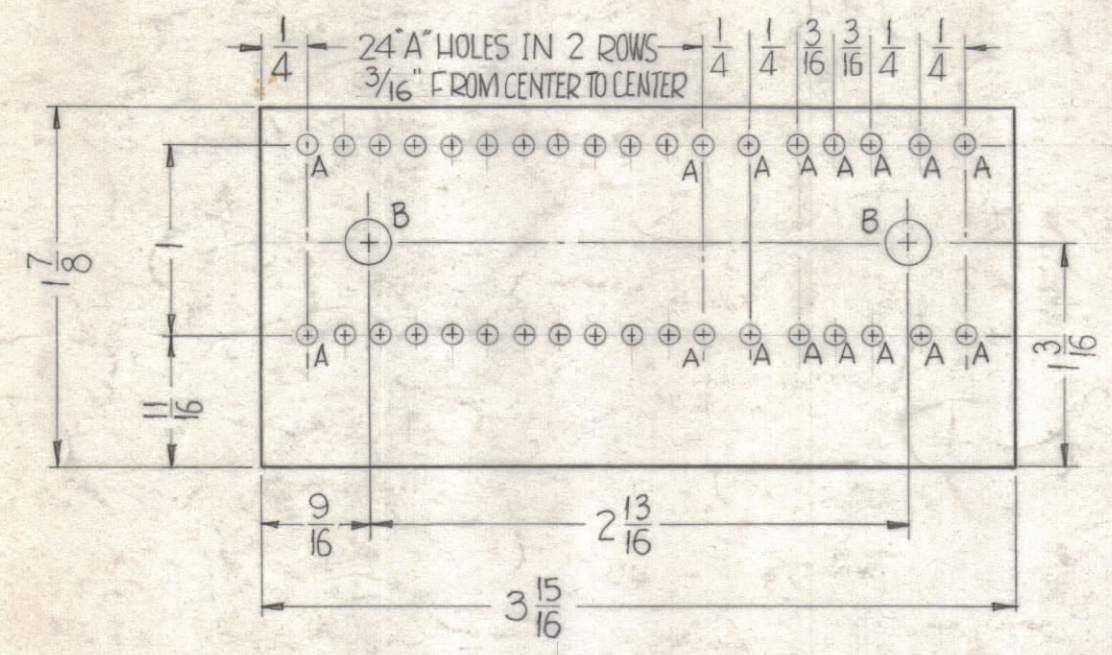
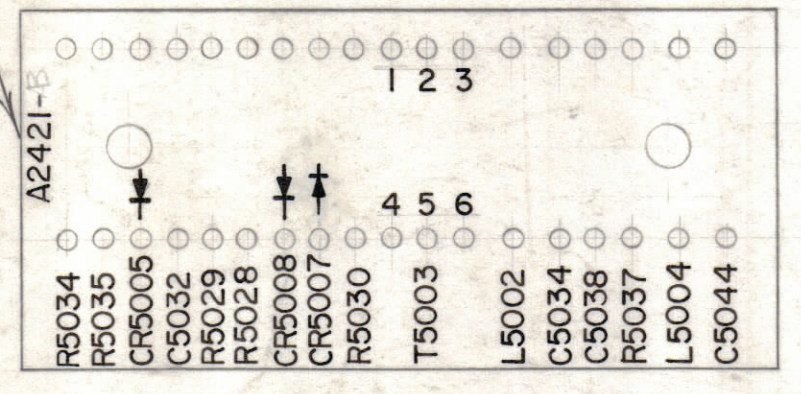


HOLE CHART		
HOLES	DESCRIPTION	REQ.
A	.078 DIA.	36
B	.189 DIA.	2



MARK TMC PART NO. W/LATEST REV. LETTER



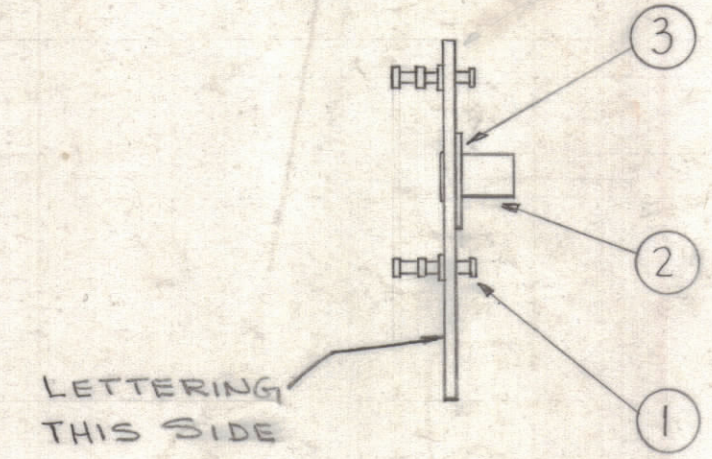
NOTE - ALL LETTERING 1/8" HIGH
BLACK LUSTERLESS, GOTHIC
MARKING PROCESS: AS PER TMC SPECIFICATION S-727

STAGE-1 - A-2421-1 (MACHINING - Material - 1/16 Thk. XXXP PHENOLIC (Natural))

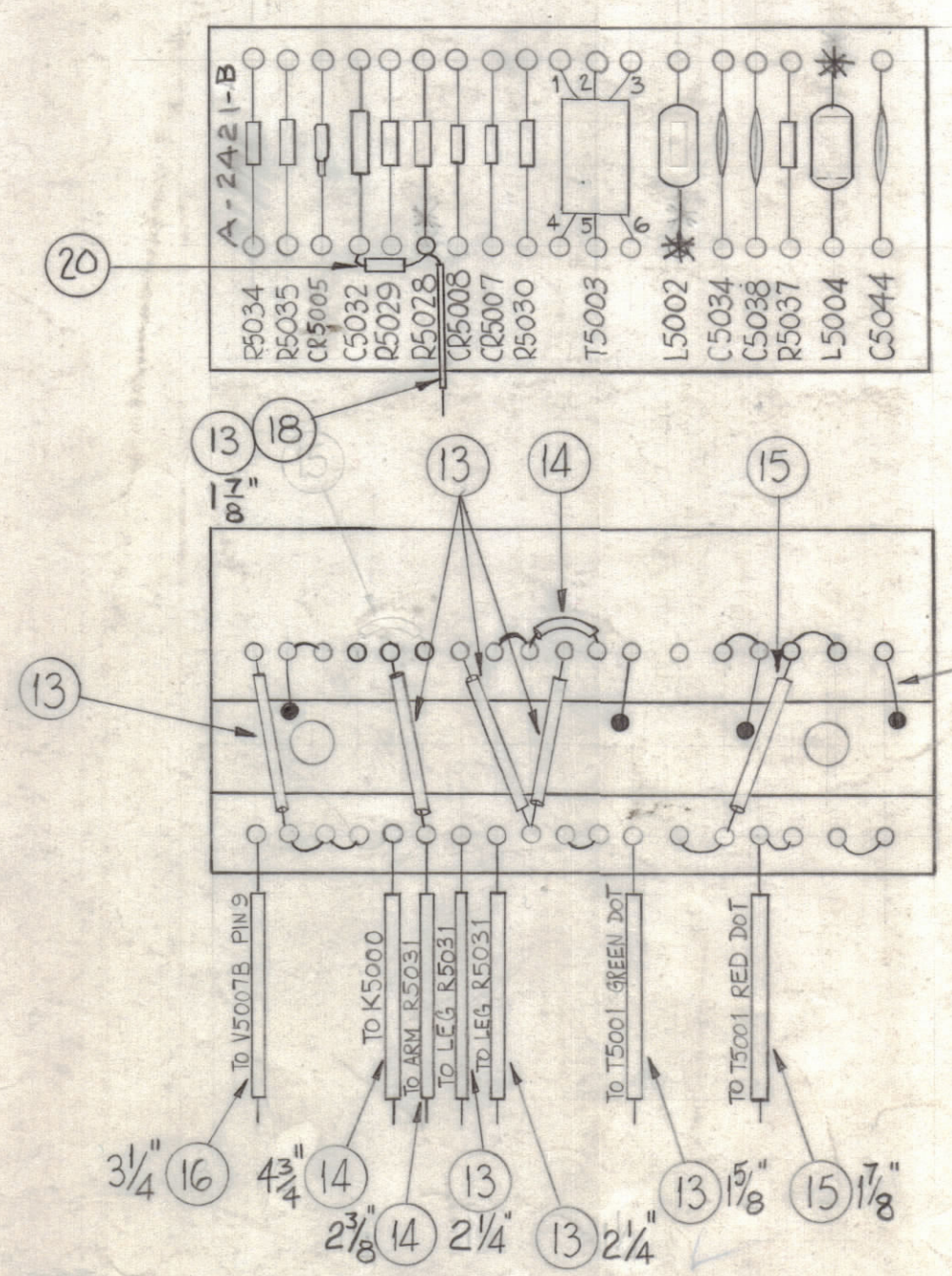
STAGE-2 - A-2421-2 (LETTERING)

STAGE-3 - A-2421-3 (SUB-ASSEMBLY)

- NOTES: (1) MOUNT ITEM ① IN ALL "A" HOLES.
(2) MOUNT ITEM ③ IN PLACE WITH ITEM ②.
(3) STAKE ITEM ② TO ITEM ③ WITH ITEM ⑥, SOLDER.



NOTICE TO PERSONS RECEIVING THIS DRAWING
THE TECHNICAL MATERIEL CORPORATION claims proprietary right in the material disclosed hereon. This drawing is issued in confidence for engineering information only and may not be reproduced or used to manufacture anything shown hereon without permission from THE TECHNICAL MATERIEL CORPORATION to the user. This drawing is loaned for mutual assistance and is subject to recall at any time.
Property of:
THE TECHNICAL MATERIEL CORPORATION
MAMARONECK, NEW YORK



- NOTES: 1) ALL WIRE TO BE 1/4" LONGER THAN SLEEVING.
2) • INDICATES SOLDER CONNECTION TO GROUND STRAP (ITEM 3)
3) * DENOTES DO NOT SOLDER

STAGE 4 - A-2421-4 (FINAL ASSEMBLY)

REQ. ITEM	PART NO.	DESCRIPTION	SYMBOL
1	20	RC20GF103J	RESISTOR, FIXED, COMPOSITION R5118
X	19	BS-100	SOLDER, SOFT
X	18	WL-100-7	WIRE, BUSS-BAR, TINNED
1	17	CM15E511J	CAPACITOR, FIXED, MICA C5032
3 1/4"	16	PX-104-4-.034	SLEEVING, INSULATION GREEN
2 7/8"	15	PX-104-3-.034	SLEEVING, INSULATION RED
8 1/4"	14	PX-104-2-.034	SLEEVING, INSULATION YELLOW
9 1/4"	13	PX-104-6-.034	SLEEVING, INSULATION BLUE
3	12	IN-100	DIODE
1	11	TF-228-K15	TRANSFORMER, PULSE T5003
2	10	CL-140-1	CHOKE, MOLDED, RF L5002 L5004
3	9	CC-100-37	CAPACITOR, FIXED, CERAMIC
1	8	RC20GF152J	RESISTOR, FIXED, COMPOSITION R5037
1	7	822J	R5030
1	6	123J	R5028
1	5	475J	R5035
2	4	RC20GF104J	RESISTOR, FIXED, COMPOSITION R5034 R5029
1	3	MS-202-32-3.93	STRIP, COPPER (TERM. BD GROUND)
2	2	TE-108-6	STAND-OFF, RIVET TYPE
36	1	TE-168-4-B	TERMINAL, MINIATURE

SYM	ZONE	DESCRIPTION	DATE	CH. NO.	DRAFTS	CHECKER	ENG. APP.
D		CHG'D ALL 'K' RES TO 'J', IT 17 WAS CM15C511K	11-21-66	17290	RME	QC	

UNLESS OTHERWISE SPECIFIED:
DIMENSIONS ARE IN INCHES
TOLERANCES ON FRACTIONS ± 1/64 DECIMALS ± .005 ANGLES ± 1/2°
SCALE: MAXIMUM ALLOWABLE TOLERANCES HAVE BEEN DETERMINED AND ANY DEVIATIONS WILL BE CAUSE FOR REJECTION. REMOVE ALL BURRS & SHARP EDGES

REQ. PER UNIT	MODEL	SECTION	ASS'Y. NO.	DATE
1	AFC-3			7-26-62

REQ. ITEM	PART NO.	DESCRIPTION	SYMBOL
THE TECHNICAL MATERIEL CORP. MAMARONECK, NEW YORK			
STOCK SIZE			
MATERIAL			
TERMINAL BOARD & COMPONENT ASSEMBLY PHASE DETECTOR			
DRAWN		CHECKED	
TYPE & TEMPER		HEAT TREAT. SPEC.	
FINISH & SPEC. NO.		ELEC. DES. APP. MECH. DES. APP.	
		SHEET OF	
		A-2421 D	