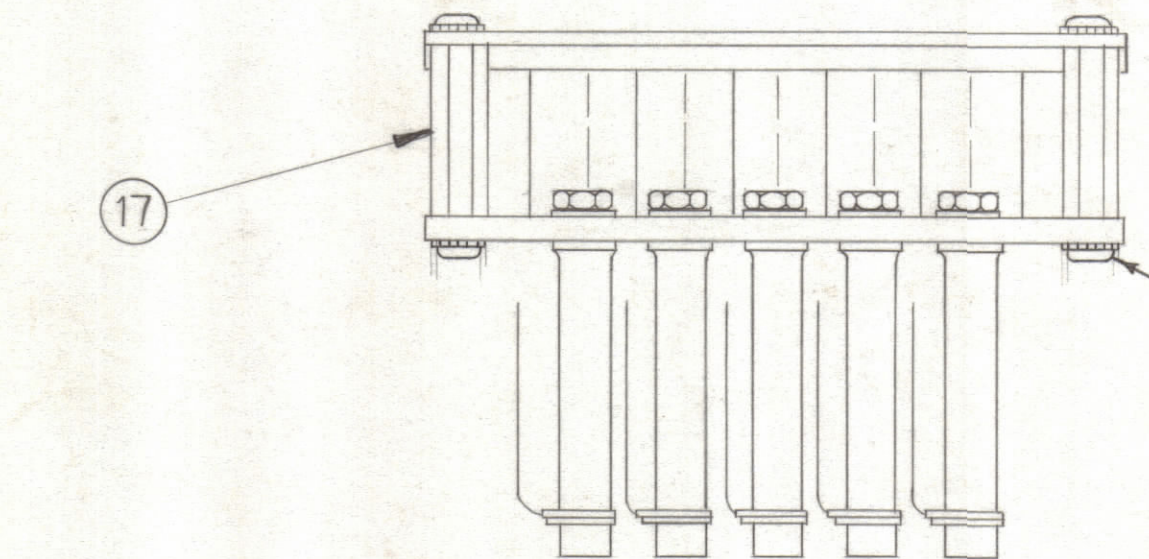
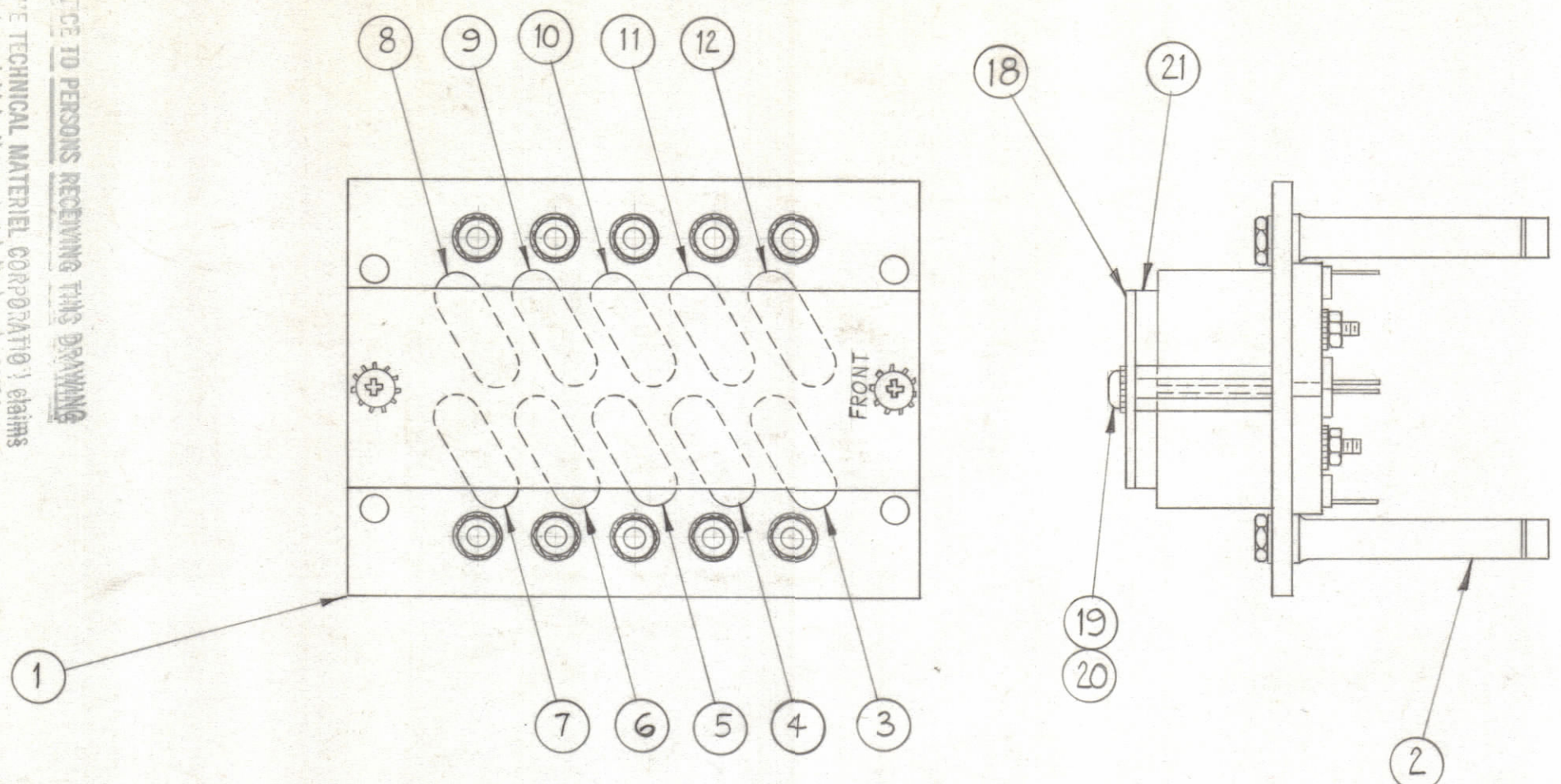
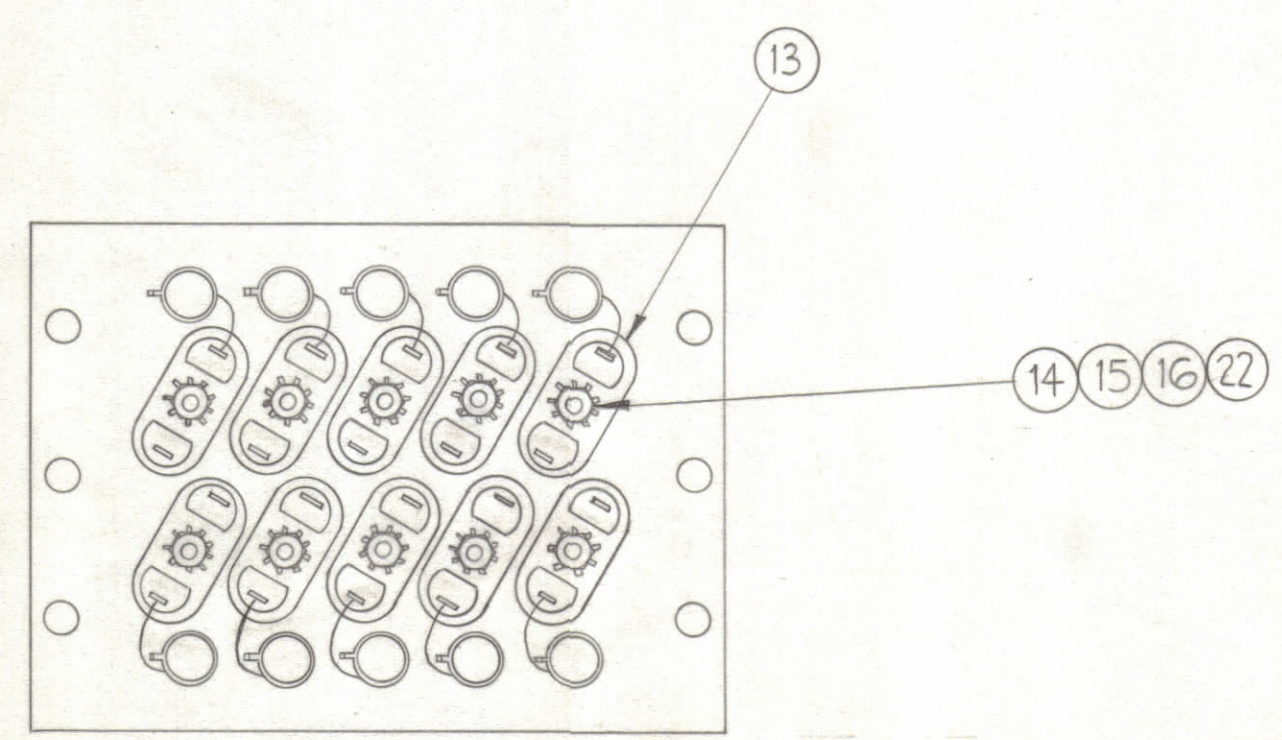


REVISIONS					
ZONE	SYM	DESCRIPTION	DATE	E.M.N. NO.	DRAFT
D2, C1	A	ITEM (22) ADDED; SYMBOLS REVERSED; ITEM (18) REVERSED	11-6-62	7590	J. Strumer
D2		ITEM (16) WAS NTH0440BN8; (17) WAS TEO632BC58H	6-28-62		
B2		LD-1081 ADDED TO ITEM (1)			
D2, D4	B	ITEMS (19) & (20) QTY WAS 2, NOTE ADDED.	4-26-63	8891	J. Strumer



NOTE:
 1) USE (2) EA. ITEMS (19) & (20) TO RETAIN PLATE & SPACER ASSY TO BOARD.
 2) WHEN ASSEMBLING A-2420 INTO UNIT, REMOVE THESE ITEMS & USE THEM TO MOUNT A-2420 TO CHASSIS.



REQ'D.	ITEM	PART NUMBER	DESCRIPTION	SYMBOL
10	22	WA-109-17	WASHER, FIBER	
1	21	RY-121-20-6-3.625	STRIP, SPONGE RUBBER	
4	20	SCBPO632BN8	SCREW, MACHINE	
4	19	LWEO6MRN	LOCKWASHER, EXTERNAL	
1	18	MS-2950 (LD-1084)	PLATE, CRYSTAL, TIEDOWN	
2	17	TEO632BN58H	SPACER, THREADED	
10	16	NTH0440BN6	NUT, HEX.	
10	15	LWEO4MRN	LOCKWASHER, EXTERNAL	
10	14	SCFPO440BN8	SCREW, MACHINE	
10	13	TS-104-2	SOCKET, CRYSTAL	
1	12	CR-109-45	CRYSTAL UNIT, QUARTZ	Y3401
1	11	44		Y3402
1	10	43		Y3403
1	9	42		Y3404
1	8	41		Y3405
1	7	40		Y3406
1	6	39		Y3407
1	5	38		Y3408
1	4	37		Y3409
1	3	CR-109-36	CRYSTAL UNIT, QUARTZ	Y3410
10	2	CV-108-4	CAPACITOR, VARIABLE, PISTON TYPE	C3448 TO C3457
1	1	PX-658 (LD-1081)	BOARD, MOUNTING CRYSTALS	

LIST OF MATERIAL			
MATERIAL		THE TECHNICAL MATERIEL CORP. MAMARONECK, NEW YORK	
FINISH		TITLE CRYSTAL & CAPACITOR BOARD ASS'Y. #4 (3400 DECK)	
UNLESS OTHERWISE SPECIFIED DIMENSIONS ARE IN INCHES AND INCLUDE CHEMICALLY APPLIED OR PLATED FINISHES		DRAWN: W.A. Franco CHECKED: J.H. Mann ELECT. DES.: J.H. Mann MECH. DES.: J.H. Mann	DATE: 6-18-62 DATE: 6-28-62 DATE:
DECIMALS: .X ± .05 .XX ± .01 .XXX ± .005		FRACTIONS: ± 1/64 ANGLES: ± 0° 30'	
SCALE: DO NOT SCALE. MODEL USED ON: HFS-1 ASS'Y. NO.: 3400		FINAL APPROVAL: [Signature] DATE: 6-18-62 SHEET: A-2420	
THE CONTENTS OF THIS DRAWING ARE THE EXCLUSIVE PROPERTY OF THE TECHNICAL MATERIEL CORP. ITS UNAUTHORIZED USE OR REPRODUCTION IN WHOLE OR IN PART IS STRICTLY FORBIDDEN.		REV. LTR.: B	

NOTES

NOTE TO PERSONS RECEIVING THIS DRAWING
 THE TECHNICAL MATERIEL CORPORATION claims copyright in the material disclosed herein. This drawing is issued in confidence for information only and may not be reproduced or used to manufacture anything shown herein without the written permission of THE TECHNICAL MATERIEL CORPORATION to the user. This drawing is loaned for mutual assistance and is subject to recall at any time.
 Property of:
 THE TECHNICAL MATERIEL CORPORATION
 MAMARONECK, NEW YORK