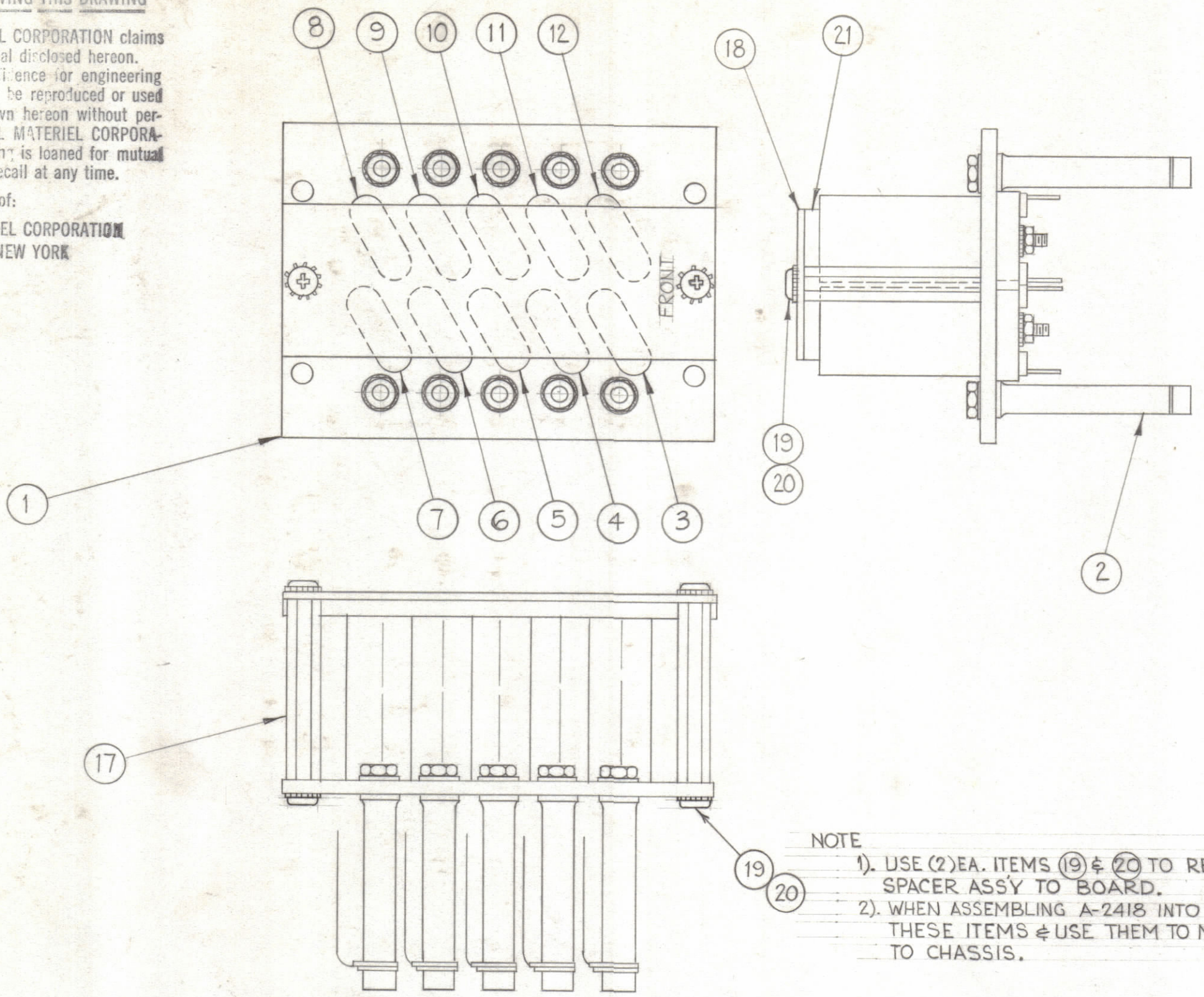


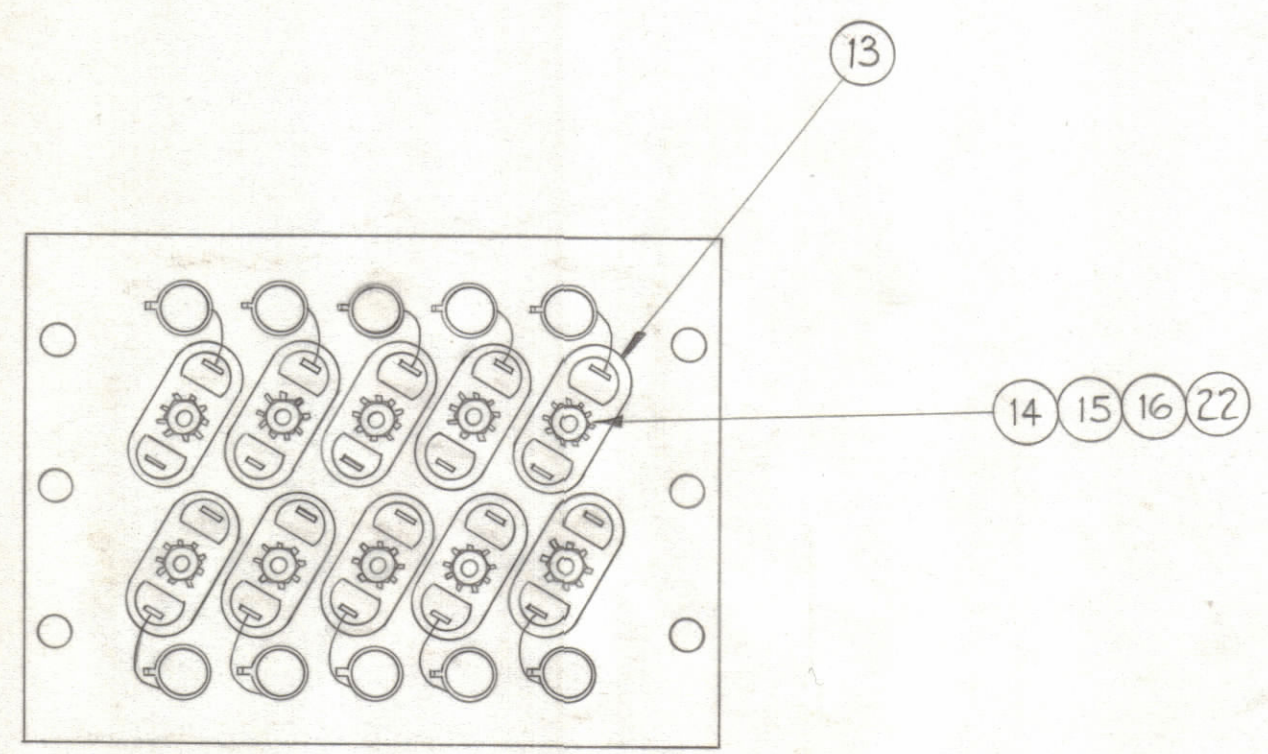
NOTICE TO PERSONS RECEIVING THIS DRAWING

THE TECHNICAL MATERIEL CORPORATION claims proprietary right in the material disclosed hereon. This drawing is issued in confidence for engineering information only and may not be reproduced or used to manufacture anything shown hereon without permission from THE TECHNICAL MATERIEL CORPORATION to the user. This drawing is loaned for mutual assistance and is subject to recall at any time.

Property of: THE TECHNICAL MATERIEL CORPORATION MAMARONECK, NEW YORK



- NOTE
- 1). USE (2) EA. ITEMS (19) & (20) TO RETAIN PLATE & SPACER ASS'Y TO BOARD.
 - 2). WHEN ASSEMBLING A-2418 INTO UNIT, REMOVE THESE ITEMS & USE THEM TO MOUNT A-2418 TO CHASSIS.



C3232 thru C3241

REVISIONS						
ZONE	SYM	DESCRIPTION	DATE	E.M.N. NO.	DRAFT	CHKD
C1, B2	A	SYMBOLS REVERSED; LD-1079 ADDED TO ITEM (1)	10-24-62	7441	EF	JLH
C2, D2	B	ITEM (4) WAS SCBP0440BN8; ITEM (6) WAS NTH0440BN8	10-31-62	7514	EF	JLH
D2, D4	C	ITEM (20) WAS SCBP0632BN8; ITEM (22) ADDED	4-26-63	8891	EF	JLH

ID	QTY	PART NUMBER	DESCRIPTION	SYMBOL
1	22	WA-109-17	WASHER, FIBER	
1	21	RY-121-20-6-3.625	STRIP, SPONGE RUBBER	
4	20	SCBP0632BN6	SCREW, MACHINE	
4	19	LWE06MRN	LOCKWASHER, EXTERNAL	
1	18	MS-2950 (LD-1082)	PLATE, CRYSTAL TIEDOWN	
2	17	TE0632BN6H	SPACER, THREADED	
10	16	NTH0440BN6	NUT, HEX	
10	15	LWE04MRN	LOCKWASHER, EXTERNAL	
10	14	SCFP0440BN8	SCREW, MACHINE	
10	13	TS-104-2	SOCKET, CRYSTAL	
1	12	CR-109-25	CRYSTAL UNIT, QUARTZ	Y3201
1	11	24		Y3202
1	10	23		Y3203
1	9	22		Y3204
1	8	21		Y3205
1	7	20		Y3206
1	6	19		Y3207
1	5	18		Y3208
1	4	17		Y3209
1	3	CR-109-16	CRYSTAL UNIT, QUARTZ	Y3210
10	2	CV-108-4	CAPACITOR, VARIABLE, PISTON TYPE	
1	1	PX-658 (LD-1079)	BOARD, MOUNTING CRYSTALS	

J. STRUMER LIST OF MATERIAL

MATERIAL THE TECHNICAL MATERIEL CORP. MAMARONECK, NEW YORK

FINISH TITLE CRYSTAL & CAPACITOR BOARD ASS'Y. # 2 (3200 DECK)

UNLESS OTHERWISE SPECIFIED DIMENSIONS ARE IN INCHES AND INCLUDE CHEMICALLY APPLIED OR PLATED FINISHES

SCALE DO NOT SCALE

DECIMALS: .X ± .05, .XX ± .01, .XXX ± .005

FRACTIONS: ± 1/64, ANGLES: ± 0° 30'

TOLERANCES

DRAWN: W.A. Franco, DATE: 6-15-62

CHECKED: J.S., DATE: 6-22-62

DESIGNER: J.S., DATE: 6-22-62

MECH. DES. DATE: 6-22-62

FINAL APPROVAL: [Signature], DATE: [Blank]

REV. LTR. C

SHEET 1

NOTES

QTY/UNIT	MODEL USED ON	ASS'Y. NO.
	HFS-1	3200
SCALE	CODE	
DO NOT SCALE		

THE CONTENTS OF THIS DRAWING ARE THE EXCLUSIVE PROPERTY OF THE TECHNICAL MATERIEL CORP. ITS UNAUTHORIZED USE OR REPRODUCTION IN WHOLE OR IN PART IS STRICTLY FORBIDDEN.