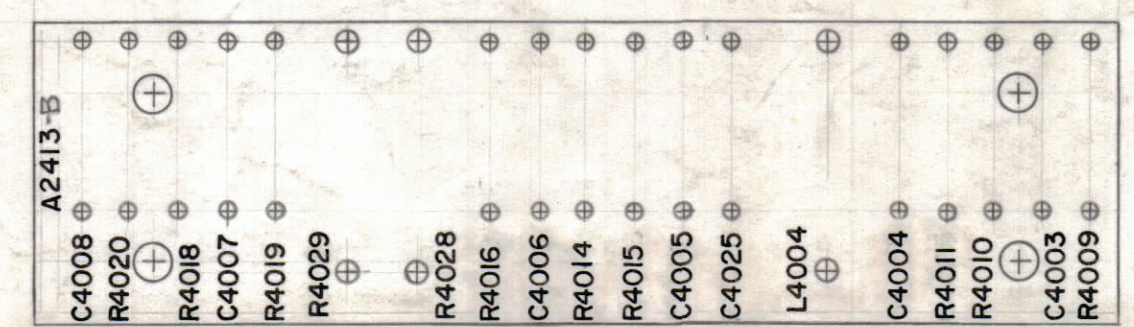


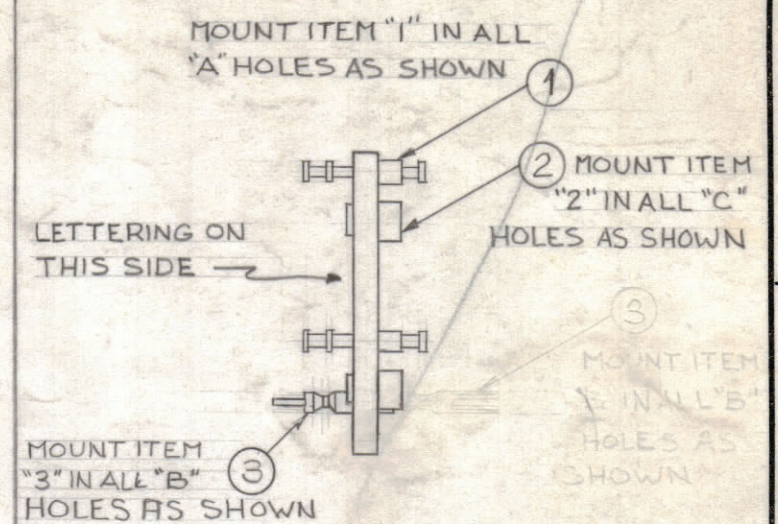
LEGEND

HOLE	DESCRIPTION	REQ
A	.073 DIA.	32
B	.113 DIA.	6
C	.189 DIA.	4

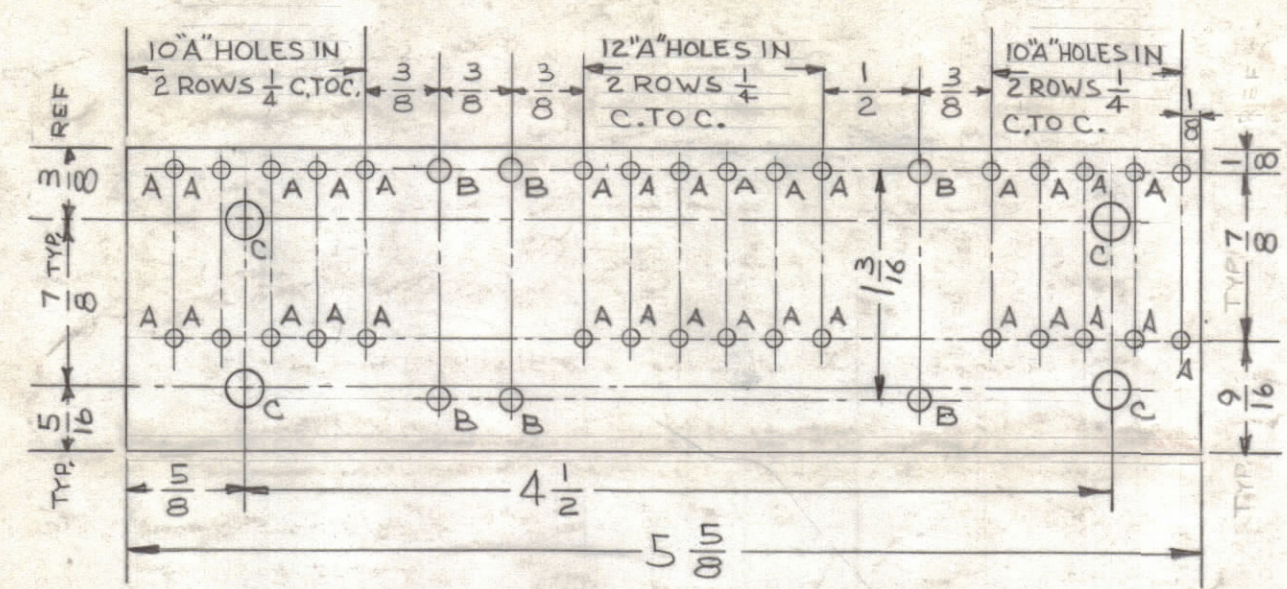
1/8" HIGH BLACK LUSTERLESS, GOTHIC LETTERING (PRINTS WITH INLAY PROCESS OR EQUIVALENT)  
MARKING PROCESS: AS PER TMC SPECIFICATION S-727



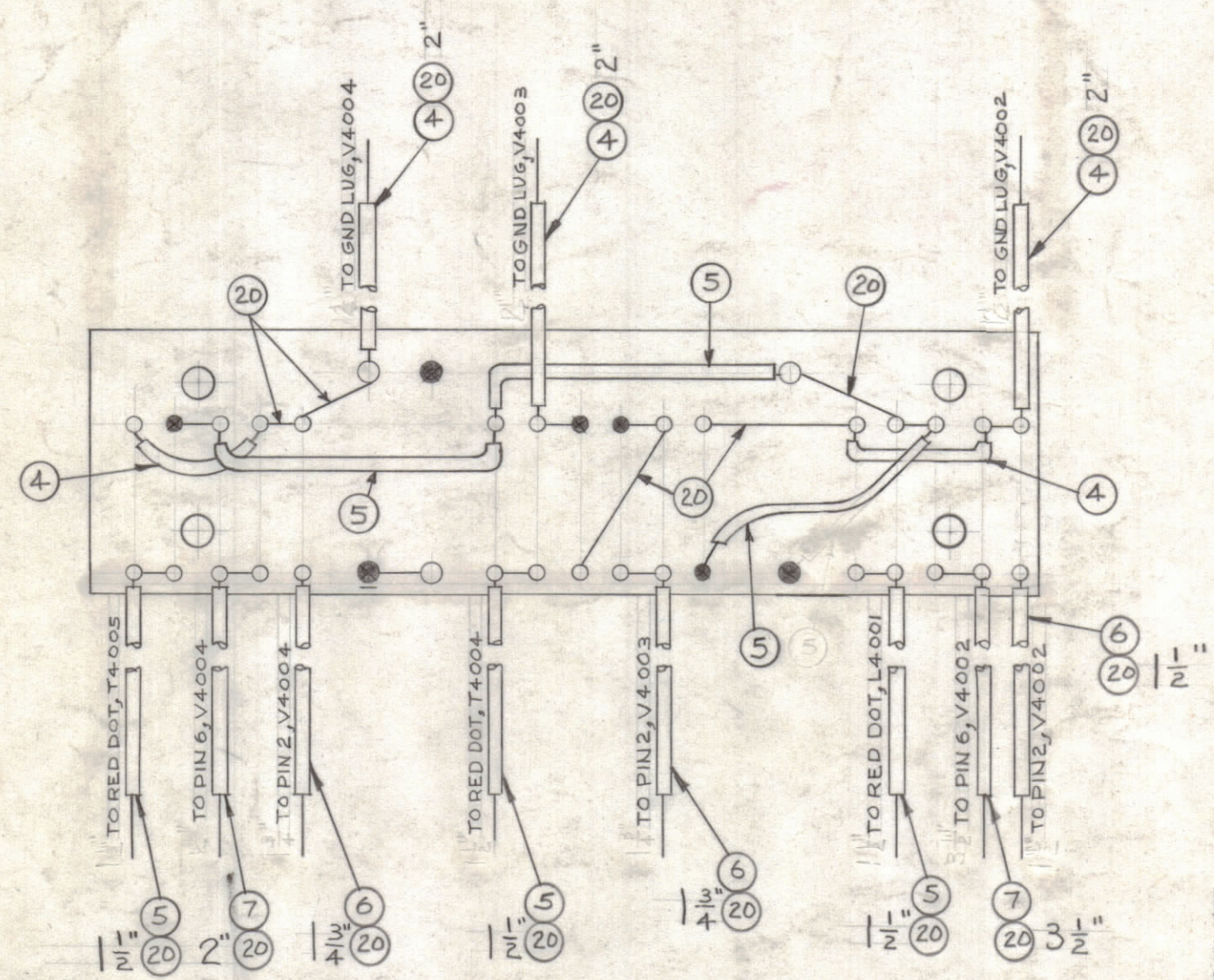
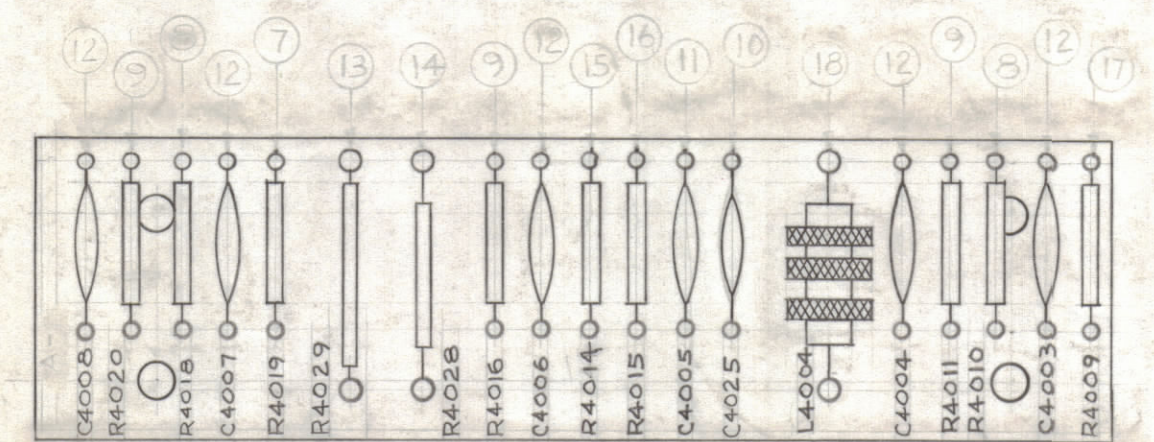
STAGE 2 - STAMPING (A-2413-2)



STAGE 3 - SUB ASSY (A-2413-3)



STAGE 1 - MACHINING (A-2413-1)  
MATERIAL - .062, XX XP, PHENOLIC FINISH - NATURAL



STAGE 4 - FINAL ASSY (A-2413-4)

NOTE:  
1 - DO NOT SOLDER  
2 - ALL SLEEVING TO BE 1/2" SHORTER THAN BUSS WIRE

NOTICE TO PERSONS RECEIVING THIS DRAWING  
THE TECHNICAL MATERIEL CORPORATION claims proprietary right in the material disclosed hereon. This drawing is issued in confidence for engineering information only and may not be reproduced or used to manufacture anything shown hereon without permission from THE TECHNICAL MATERIEL CORPORATION to the user. This drawing is loaned for mutual assistance and is subject to recall at any time.

Property of:  
THE TECHNICAL MATERIEL CORPORATION  
MAMARONECK, NEW YORK

X	21	BS-100	SOLDER, SOFT	
54"	20	WL-100-6	WIRE, BUSS (SIZE 20)	
1	19	CL-226-5	COIL, RF, FERRITE CORE	L4004
5	18	CC-100-24	CAPACITOR, FIXED CERAMIC DISC	
1	17	CC-100-28		C4005
1	16	CC-100-37	CAPACITOR, FIXED CERAMIC DISC	C4025
1	15	RC20GF102K	RESISTOR, FIXED COMPOSITION	R4009
1	14	RC20GF392K		R4015
1	13	RC20GF680K		R4014
1	12	RC32GF562K		R4028
1	11	RC42GF153K		R4029
3	10	RC20GF472K		
2	9	RC20GF223K		
1	8	RC20GF681K	RESISTOR, FIXED COMPOSITION	R4019
5 1/2"	7	PX-104-8-.034	INSULATION, SLEEVING (SIZE 20)	ORN
5"	6	PX-104-2-.034		YEL
10"	5	PX-104-3-.034		RED
8"	4	PX-104-1-.034	INSULATION, SLEEVING (SIZE 20)	BLK
6	3	TE-109-1	SPLIT TERMINAL LUG	B
4	2	TE-164-1	STANDOFF, RIVET TYPE	C
32	1	TE-168-4B	TERMINAL, MINIATURE	A

SYM	ZONE	DESCRIPTION	DATE	CH. NO.	DRAFTS	CHECKER	ENG. APP.
C	#	ON PICT STAGE 3, IT. 3 WAS ROTATED 90°	10-7-64	12570	JF		
B	EG	ITEM (16) WAS CC-100-32	8-2-63	9696	AL		
A	DB3	LENGTHS ADDED TO ITEMS (4) TO (7) & (20)	2-7-63	8199	ET		

UNLESS OTHERWISE SPECIFIED:  
DIMENSIONS ARE IN INCHES  
TOLERANCES ON FRACTIONS ± 1/64 DECIMALS ± .005 ANGLES ± 1/2°  
SCALE  
MAXIMUM ALLOWABLE TOLERANCES HAVE BEEN DETERMINED AND ANY DEVIATIONS WILL BE CAUSE FOR REJECTION. REMOVE ALL BURRS & SHARP EDGES

REQ. PER UNIT	MODEL	SECTION	ASS'Y. NO.	DATE
1	HNF-1			7-26-62

REQ. ITEM	PART NO.	M. GELLMAN	DESCRIPTION	SYMBOL
THE TECHNICAL MATERIEL CORP. MAMARONECK, NEW YORK				
TERMINAL BOARD AND COMPONENT ASSEMBLY				
DRAWN		CHECKED		FINAL APPROVAL
TYPE & TEMPER		HEAT TREAT. SPEC.		
FINISH & SPEC. NO.		ELEC. DES. APP.		MECH. DES. APP.
		SHEET		OF