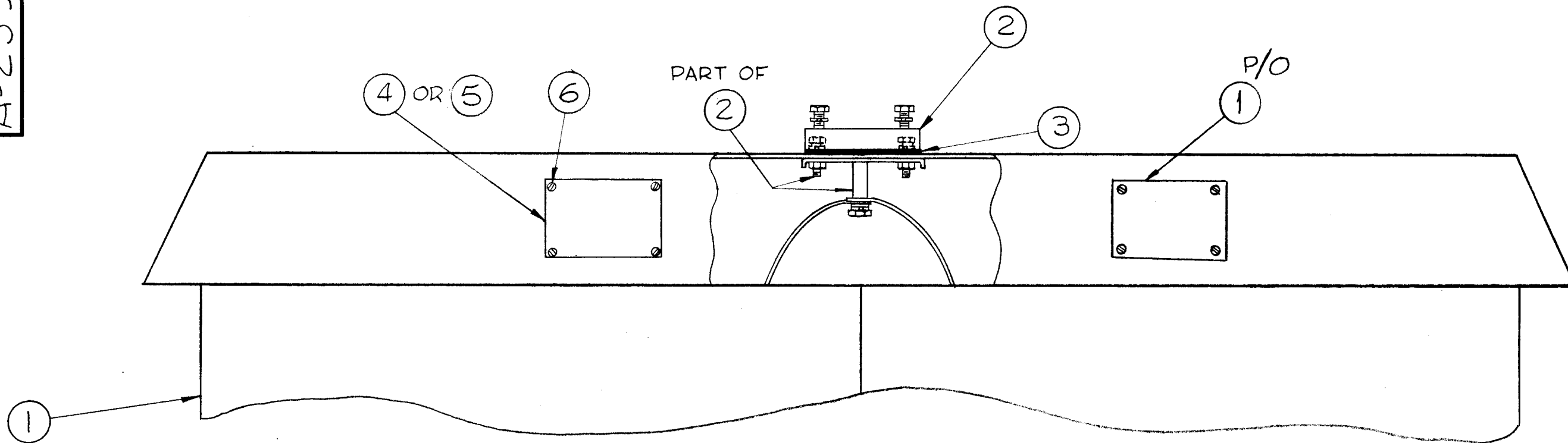


A-2390

THE CONTENTS OF THIS DRAWING ARE THE EXCLUSIVE PROPERTY OF THE TECHNICAL MATERIEL CORP. ITS UNAUTHORIZED USE OR REPRODUCTION IN WHOLE OR IN PART IS STRICTLY FORBIDDEN.



AS REQUIRED

4	6	SFBO440SN4	SCREW, SELF TAPPING
1	5	NP-	NAMEPLATE, NAVY
1	4	NP-176-8	NAMEPLATE, COMM.
1	3	GA-143-2	GASKET, ROUND
1	2	AX-272	FLANGE CONTACT ASS'Y.
1	1	A-2358	TER-5000-50 MAIN ASS'Y

REQ.	ITEM	PART NO.	DESCRIPTION	SYMBOL
			THE TECHNICAL MATERIEL CORP. MAMARONECK, NEW YORK	
STOCK SIZE			TER-5000-50/AX-272 ASS'Y	
MATERIAL				
		EE	RUZZO	SAM
TYPE & TEMPER		HEAT TREAT. SPEC.	DRAWN	CHECKED
			DB	MC
FINISH & SPEC. NO.		ELEC. DES. APP.	MECH. DES. APP.	A-2390

SYM	DESCRIPTION	DATE	CH. NO.	DRAFTS	CHECKER	ENG. APP.
UNLESS OTHERWISE SPECIFIED:						
DIMENSIONS ARE IN INCHES		SCALE: DO NOT SCALE				
TOLERANCES ON FRACTIONS ± 1/64		MAXIMUM ALLOWABLE TOLERANCES HAVE BEEN DETERMINED AND ANY DEVIATIONS WILL BE CAUSE FOR REJECTION.				
DECIMALS ± .005		REMOVE ALL BURRS AND SHARP EDGES				
ANGLES ± 1/2°						

REQ. PER UNIT	MODEL	SECTION	ASS'Y. NO.	DATE
1	TER-5K-50/AX-272			2-21-62
USED ON				