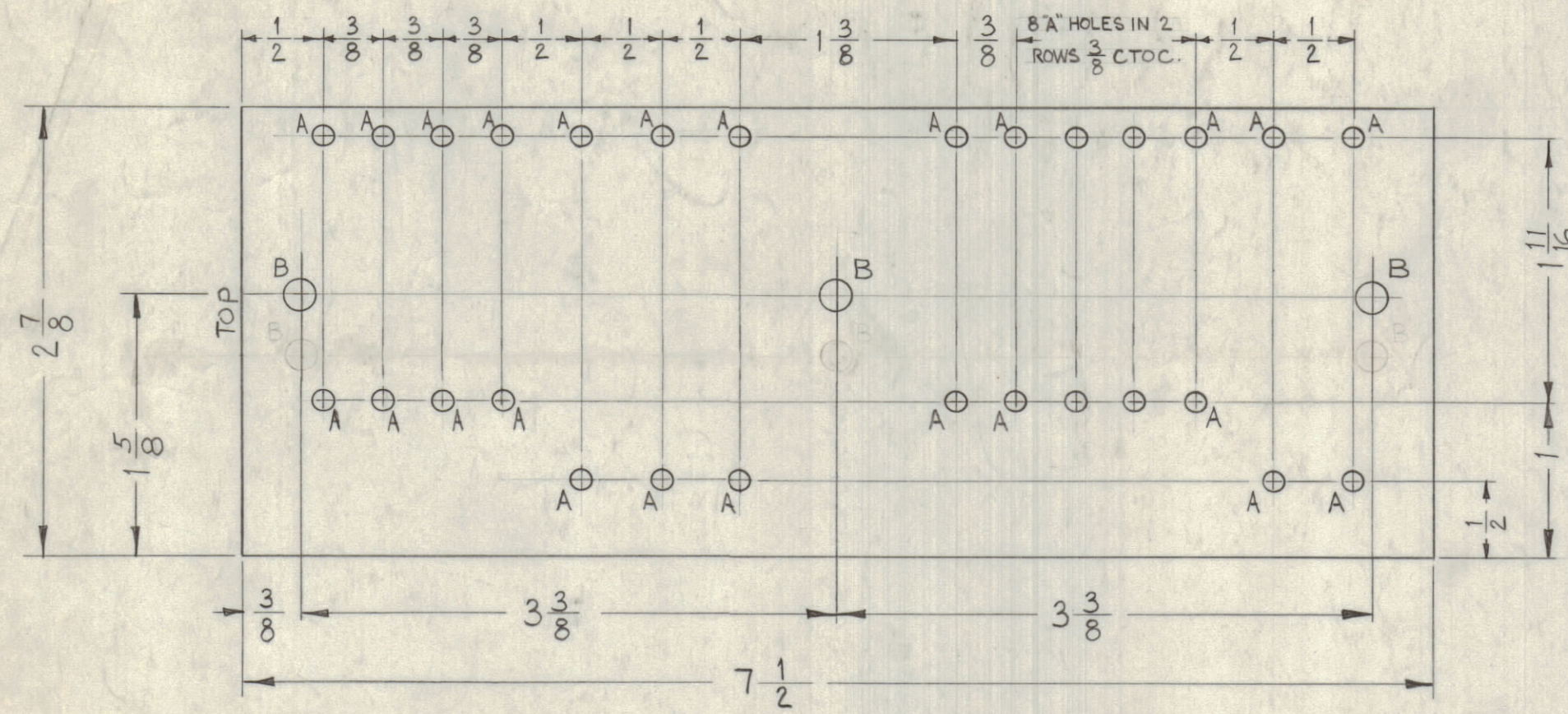
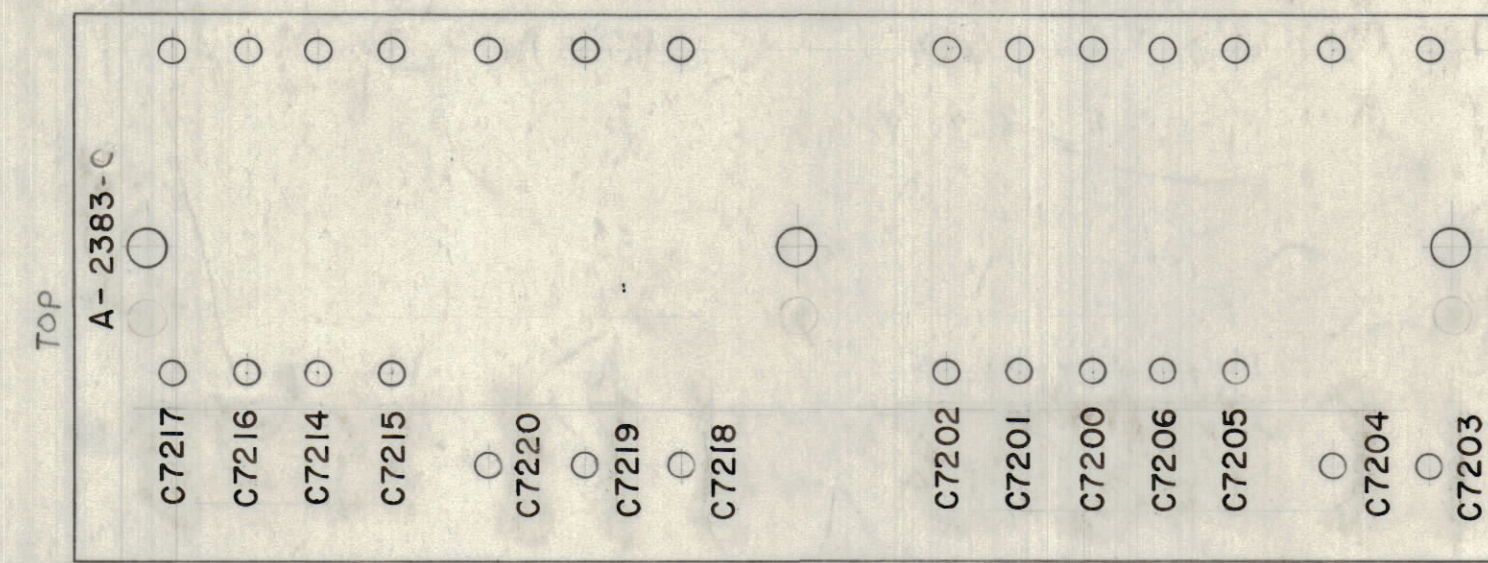


LEGEND		
HOLE	DESCRIPTION	REQ.
A	.112 DIA.	28
B	.187 DIA.	3

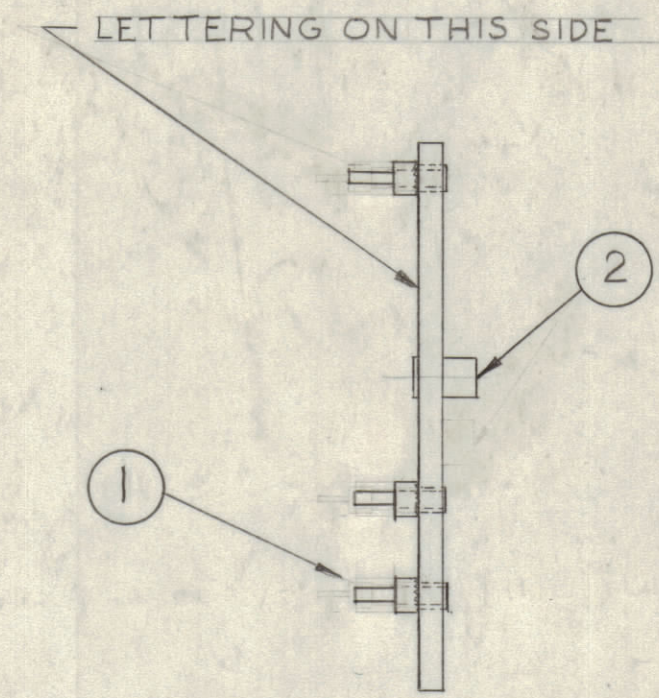
ALL LETTERING TO BE $\frac{1}{8}$ " HIGH BLACK LUSTERLESS GOTHIC
 PHOT. MARKING PROCESS: AS PER T.M.C SPECIFICATION 9-727 (ALLEN)



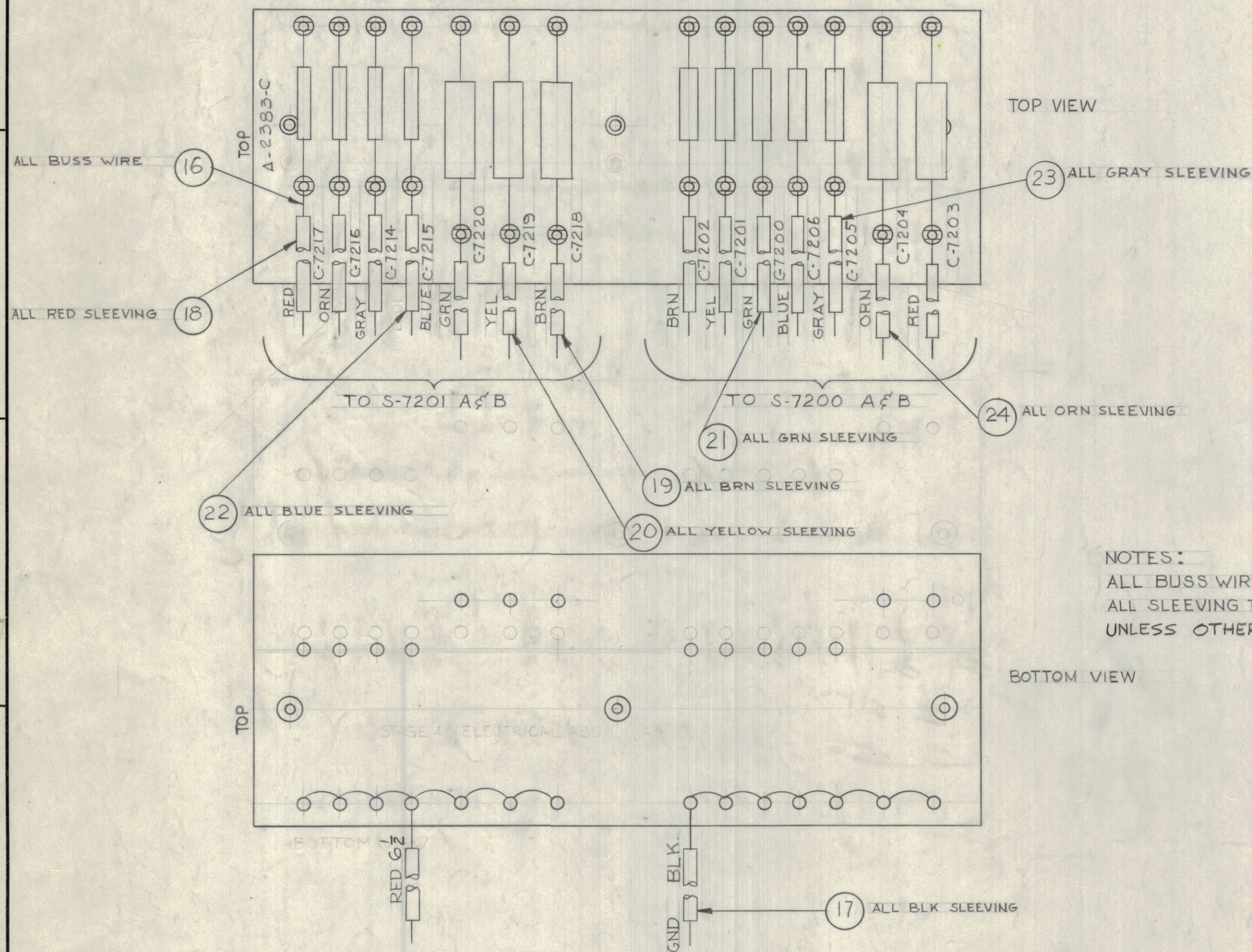
STAGE 1 - MACHINING (A-2383-2)
 MATERIAL - $\frac{1}{8}$ " XXXP, PHENOLIC, FINISH - NATURAL.



STAGE 2 - STAMPING (A-2383-2)



STAGE 3 - SUB-ASS'Y (A-2383-3)



NOTES:
 ALL BUSS WIRE TO BE 4" LONG
 ALL SLEEVING TO BE $\frac{1}{2}$ " SHORTER
 UNLESS OTHERWISE SPECIFIED

STAGE 4 - ELECTRICAL ASS'Y (A-2383-4)

NOTICE TO PERSONS RECEIVING THIS DRAWING
 THE TECHNICAL MATERIEL CORPORATION claims proprietary right in the material disclosed herein. This drawing is issued in confidence for engineering information only and may not be reprinted or used to manufacture anything shown hereon without permission from THE TECHNICAL MATERIEL CORPORATION to the user. This drawing is loaned for mutual assistance and is subject to recall at any time.
 Property of:
 THE TECHNICAL MATERIEL CORPORATION
 MAMARONECK, NEW YORK

#	QTY	DESCRIPTION	SYMBOL
7	24	PX-104-8-022	ORN
7	23	PX-104-7-022	GRAY
7	22	PX-104-6-022	BLUE
7	21	PX-104-4-022	GRN
7	20	PX-104-2-022	YEL
7	19	PX-104-5-022	BRN
13	18	PX-104-3-022	RED
3 1/2	17	PX-104-1-022	SLEEVING, INSULATED
78 1/2	16	WL-100-B	WIRE BUSS BAR, TINNED
X	15	BS-100	SOLDER, SOFT
2	14	CX-107-2	CAPACITOR, FIXED MYLAR
1	13	CX-107-6	
1	12	CX-107-4	
1	11	CX-107-8	
1	10	CX-107-10	
1	9	CX-107-12	
2	8	CX-107-7	
1	7	CX-107-3	
1	6	CX-107-5	
1	5	CX-107-1	
1	4	CX-107-9	
1	3	CX-107-11	CAPACITOR, FIXED MYLAR
3	2	TE-108-3	RIVET TYPE, STANDOFF
28	1	TE-160	TERMINAL LUG, SPLIT

SYM	ZONE	DESCRIPTION	DATE	CH. NO.	DRAFTS	CHECKER	ENG. APP.
D	-	ITEM 15 WAS 10V2, ITEM 16 WAS 70	1/16/62	10728			
C	F2	ADD ITEM 20 TO STAGE 3	8-15-63	8639			
B	C2	LENGTHS ADDED TO ITEMS (16) TO (24)	2-19-63	8264			
A	C2	ITEM (13) CX-107-13, C7216 DELETED	12-29-62	7866			
	B2	C7216 ADDED TO ITEM (14)					

NOTICE TO PERSONS RECEIVING THIS DRAWING
 THE TECHNICAL MATERIEL CORPORATION claims proprietary right in the material disclosed herein. This drawing is issued in confidence for engineering information only and may not be reprinted or used to manufacture anything shown hereon without permission from THE TECHNICAL MATERIEL CORPORATION to the user. This drawing is loaned for mutual assistance and is subject to recall at any time.
 Property of:
 THE TECHNICAL MATERIEL CORPORATION
 MAMARONECK, NEW YORK

REQ. PER UNIT	MODEL	SECTION	ASS'Y. NO.	DATE	TYPE & TEMPER.	HEAT TREAT. SPEC.	FINISH & SPEC. NO.
1	HAF-1			7-26-62			

A-2383 D