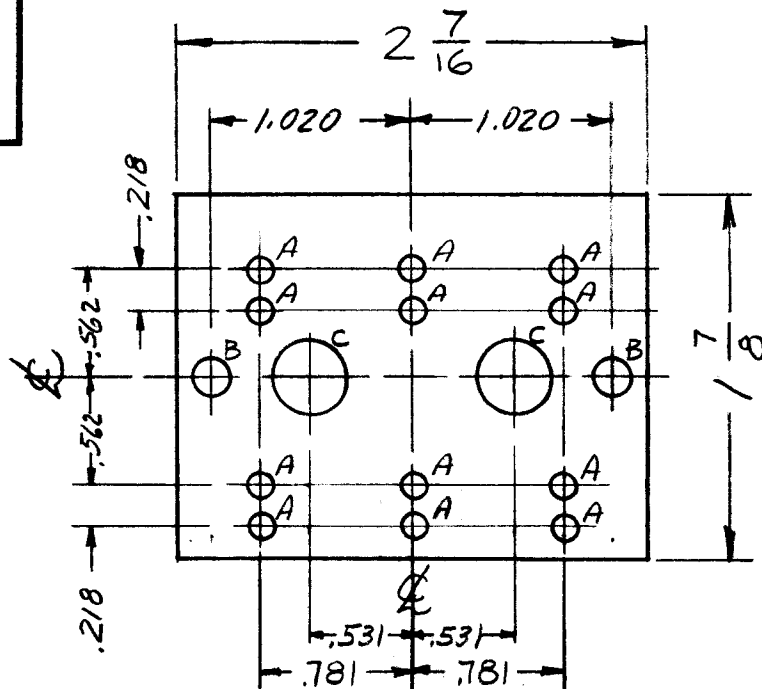


A

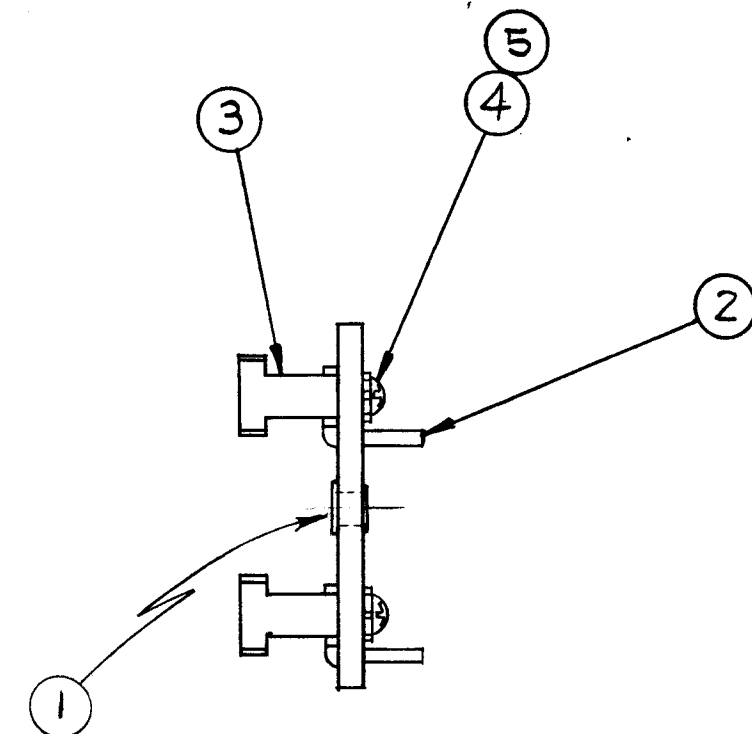
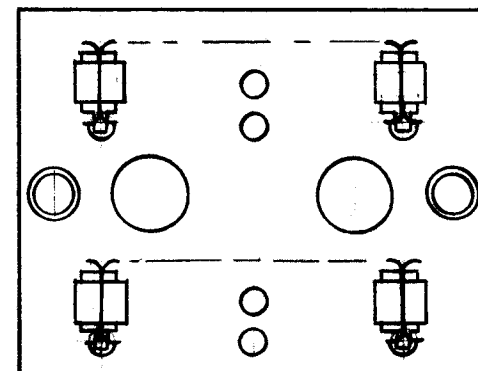
THE CONTENTS OF THIS DRAWING ARE THE EXCLUSIVE PROPERTY OF THE TECHNICAL MATERIEL CORP. ITS UNAUTHORIZED USE OR REPRODUCTION IN WHOLE OR IN PART IS STRICTLY FORBIDDEN.

A-2381



- HOLE S
- A ~ .125 DIA. 12 REQ'D.
 - B ~ 3/16 DIA. 2 REQ'D.
 - C ~ 3/8 DIA. 2 REQ'D.

STAGE 1 - MACHINING (A-2381-1)
 MAT'L - 1/8 THK. REXOLITE #2200
 FIN. - NATURAL



EYELET TO BE SPUN ON SECURELY
 LARGE FLANGE OF EYELET ON THIS SIDE (TOP)

STAGE 2 - MECHANICAL ASS'Y. (A-2381-2)

6	5	LWE04MRN	LOCKWASHER, EXT.	
6	4	SCBP0440BNA	SCREW, MACHINE	
6	3	MS-2901	CONTACT, SWITCH	
6	2	PM-760	NUT, PLATE	
2	1	EY-101-2	EYELET, ROLLED FLANGE	

REQ.	ITEM	PART NO.	DESCRIPTION	SYMBOL
			THE TECHNICAL MATERIEL CORP. MAMARONECK, NEW YORK	
			TERMINAL BOARD, OSC., STATOR SWITCH ASS'Y.	
			AB	file
			J. ANGER	RP
			A-2381	
			A	

A	STAGE #2 deleted - STAGE #2 WAS #3	6-27-62	*	gab	ADD	J
SYM	DESCRIPTION	DATE	CH. NO.	DRAFTS	CHECKER	ENG. APP.
UNLESS OTHERWISE SPECIFIED:		SCALE:				
DIMENSIONS ARE IN INCHES		MAXIMUM ALLOWABLE TOLERANCES HAVE BEEN DETERMINED AND ANY DEVIATIONS WILL BE CAUSE FOR REJECTION.				
TOLERANCES ON FRACTIONS ± 1/64		REMOVE ALL BURRS AND SHARP EDGES				
DECIMALS ± .005						
ANGLES ± 1/2°						
		1	HER-117		A-2521	2-8-62
		REQ. PER UNIT	MODEL	SECTION	ASS'Y. NO.	DATE
		USED ON				