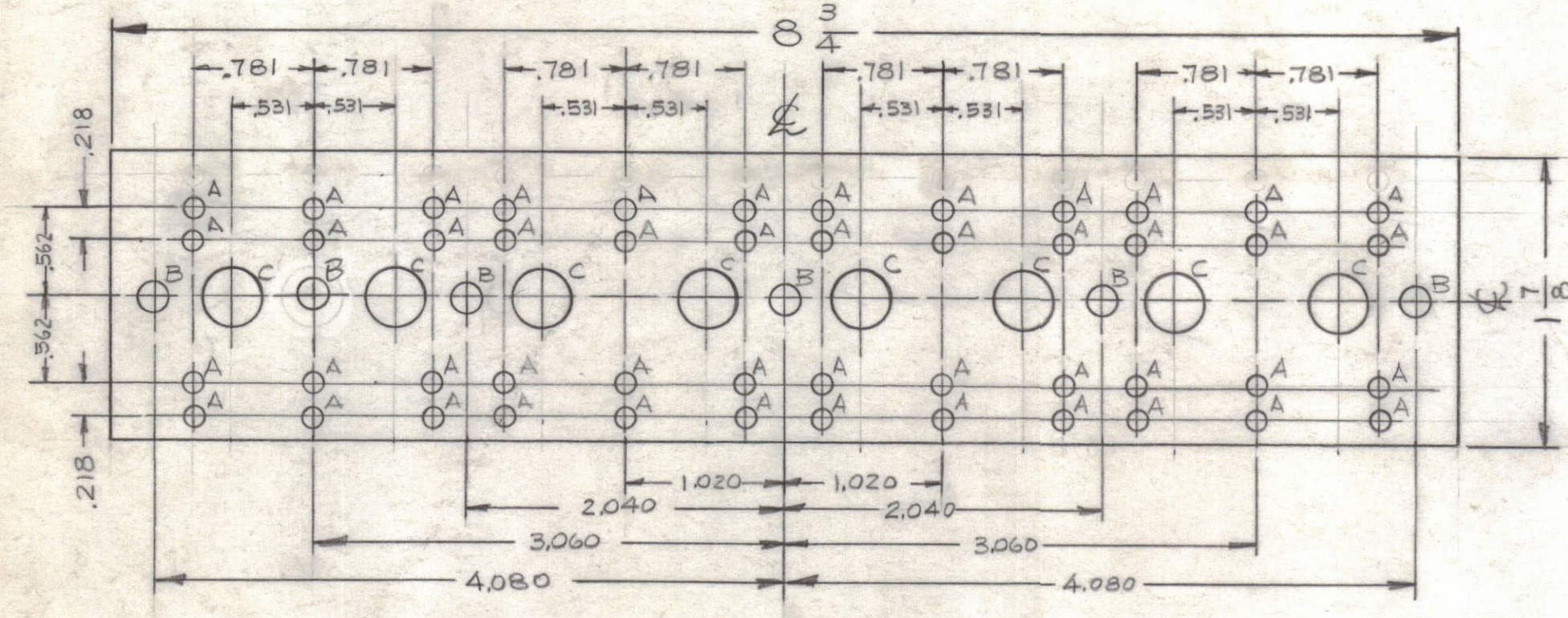


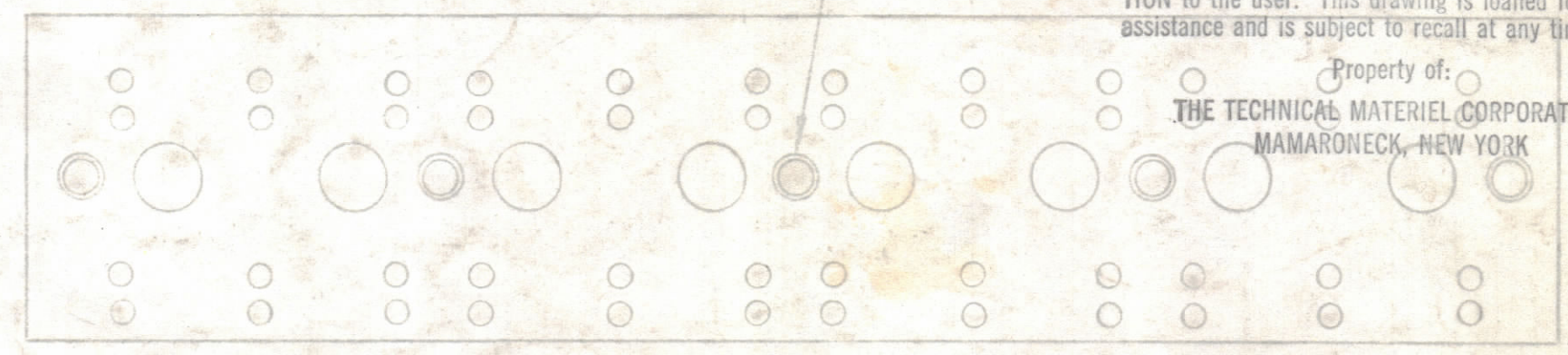
HOLES:
 A-.125 DIA. 48 REQ'D.
 B-3/16 DIA. 6 REQ'D.
 C-3/8 DIA. 8 REQ'D.



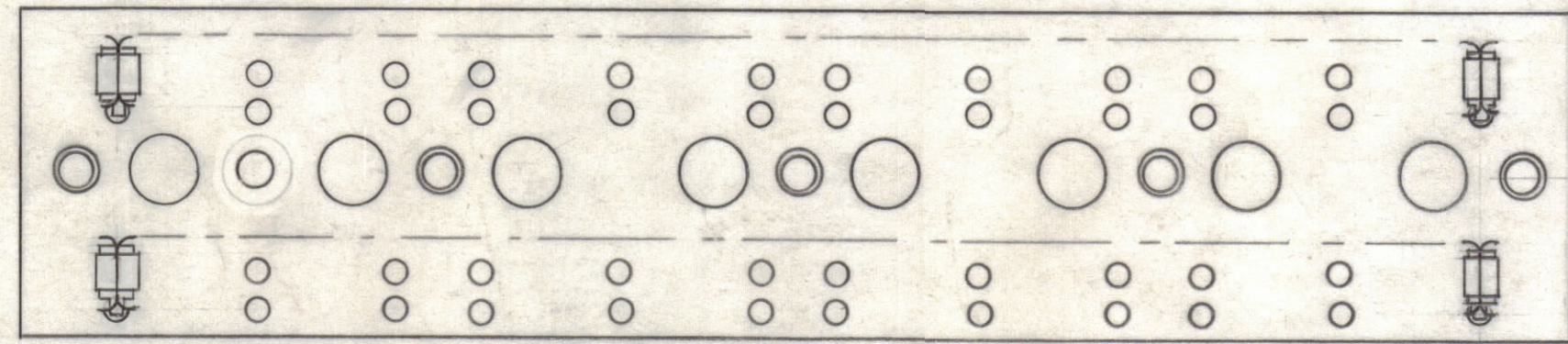
STAGE 1 - MACHINING (A-2380-1)
 MAT'L. - 1/8 THK. REXOLITE #2300, FINISH: NATURAL.

NOTICE TO PERSONS RECEIVING THIS DRAWING
 THE TECHNICAL MATERIEL CORPORATION claims proprietary right in the material disclosed herein. This drawing is issued in confidence for engineering information only and may not be reproduced or used to manufacture anything shown hereon without permission from THE TECHNICAL MATERIEL CORPORATION to the user. This drawing is loaned for mutual assistance and is subject to recall at any time.

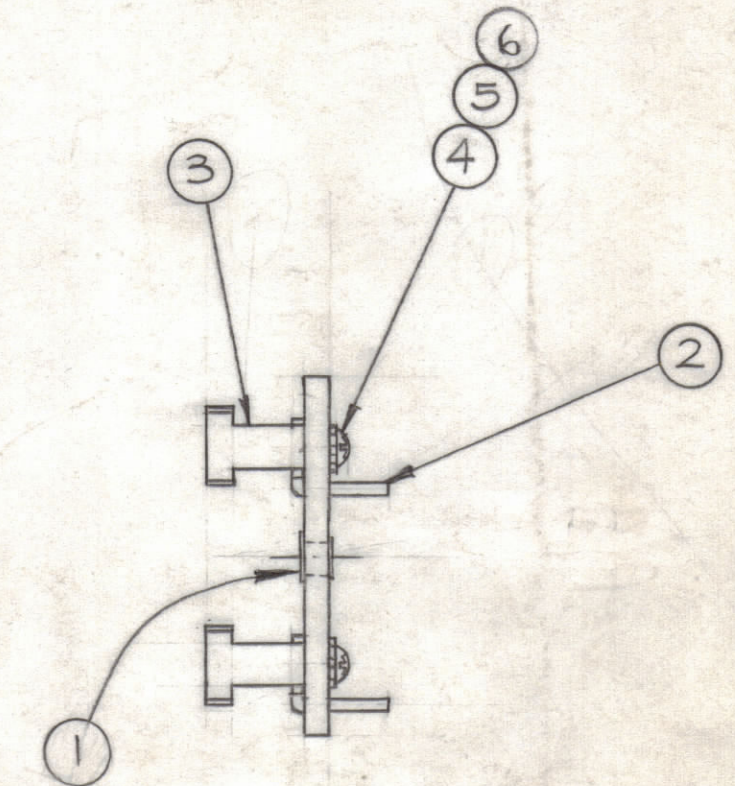
Property of:
 THE TECHNICAL MATERIEL CORPORATION
 MAMARONECK, NEW YORK



STAGE 2 - SUB-ASSY. (A-2380-2)



STAGE 2 - MECHANICAL ASSY. (A-2380-2)



REQ. ITEM	PART NO.	DESCRIPTION	SYMBOL
24 6	FW04HBN	WASHER, FLAT	
24 5	LW04MRN	LOCKWASHER, EXT.	
24 4	SCBP0440BN4	SCREW #4-40	
24 3	MS-2901	SWITCH, CONTACT	
24 2	PM-760	NUT, PLATE	
5 1	EY-101-2	EYELET, ROLLED FLANGE	

SYM	ZONE	DESCRIPTION	DATE	CH. NO.	DRAFTS	CHECKER	ENG. APP.
C	67	1 HOLE ADDED 1 HOLE DELETED	8/27/65	14735	B.V.V.		
B	67	ON PICT. 'C' HOLE ADD. (STAGE #1) ON B/M & ASSY: IT. 6 ADD; U/D: CHGR-3 ADD.	2-3-65	13421	R.L.		
A	64-12-3	STAGE 2 DELETED & STAGE 2 WAS STAGE 3.	6-28-62	7	G.O.L.		

REQ. PER UNIT	MODEL	SECTION	ASS'Y. NO.	DATE
1	CHGR-3		A2945	2-3-65
1	HR-1/T		A-2522	2-8-62

STOCK SIZE		THE TECHNICAL MATERIEL CORP. MAMARONECK, NEW YORK	
TERMINAL BOARD, RF, STATOR			
SWITCH ASSY.			
MATERIAL		DRAWN: J. ANGER	
TYPE & TEMPER		CHECKED: H.D.E.	
HEAT TREAT. SPEC.		FINAL APPROVAL: J. ANGER	
FINISH & SPEC. NO.		SHEET OF: A-2380 C	
ELEC. DES. APP.		MECH. DES. APP.	