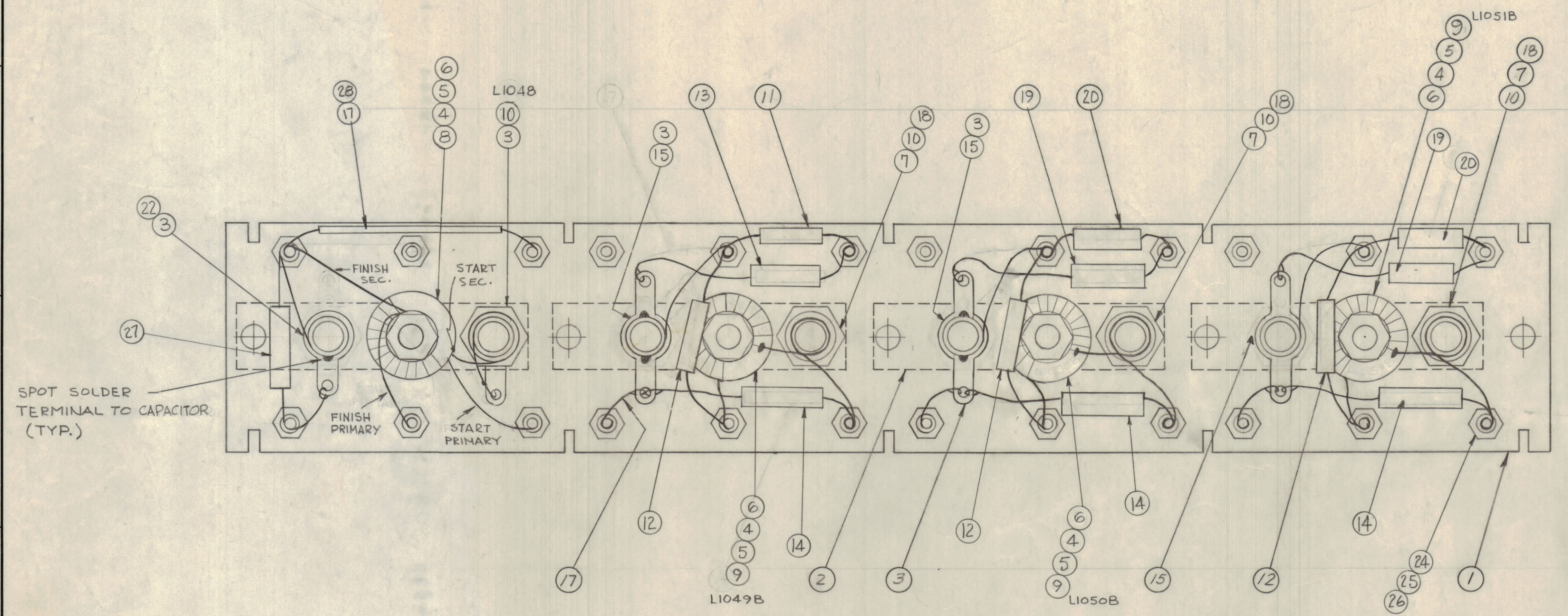


NOTICE TO PERSONS RECEIVING THIS DRAWING
 THE TECHNICAL MATERIEL CORPORATION claims proprietary right in the material disclosed hereon. This drawing is issued in confidence for engineering information only and may not be reproduced or used to manufacture any item without permission from THE TECHNICAL MATERIEL CORPORATION to the user. This drawing is loaned for mutual assistance and is subject to recall at any time.
 Property of:
 THE TECHNICAL MATERIEL CORPORATION
 MAMARONECK, NEW YORK

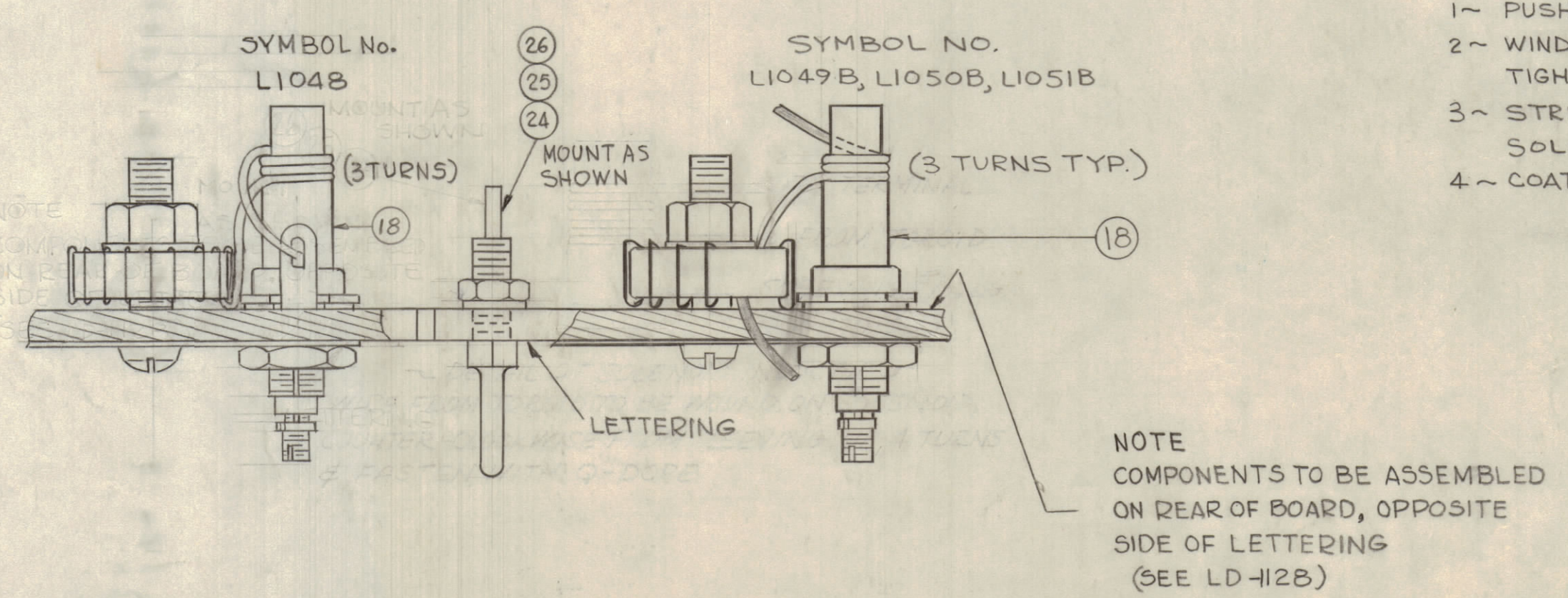


SPOT SOLDER TERMINAL TO CAPACITOR (TYP.)

FRONT

NOTE: COMPONENTS TO BE ASSEMBLED ON REAR OF BOARD, OPPOSITE SIDE OF LETTERING. (SEE LD-1128)

- PROCEDURE FOR WINDING TRIM COIL
- 1~ PUSH ITEM 18 SLEEVING ON COIL FORM AS SHOWN.
 - 2~ WIND LONG LEAD FROM TORIROID COUNTER CLOCKWISE 3 TURNS TIGHTLY AGAINST SLEEVING.
 - 3~ STRIP ENAMEL FROM END NEAR TERMINAL WRAP & SOLDER SECURELY TO TERMINAL.
 - 4~ COAT WITH GL102, QMAX. TO HOLD TURNS IN PLACE.



C1176, C1186, C1181
 C1175, C1180, C1185
 C1177, C1182, C1187
 L1049A, L1050A, L1051A

QTY	ITEM	PART NO.	DESCRIPTION	SYMBOL
X	28	PX-104-1-.034	INSULATION SLEEVING #20	
1	27	CM15C360J	CAPACITOR, 36MMF	C1196
24	26	NTH0440BNG	NUT, HEX.	
24	25	LWS04MRN	LOCKWASHER, SPRING TYPE	
24	24	TE-191	TERMINAL	
X	23	GL102	Q-MAX.	
1	22	CV-110-3	CAPACITOR, VARIABLE, .9-18	C1174
1	21	DELETED	INSULATION SLEEVING #20	
2	20	CM15C240J	CAPACITOR, 24 MMF	C1183
2	19	CM15F151G	CAPACITOR, 150 MMF	C1182, C1184, C1189
4	18	PX-370-2-B	INSULATION, SLEEVING, 5/16 LG	
X	17	WL-100-6	WIRE, BUSS, #20 AWG	
X	16	BS-100	SOLDER, SOFT	
3	15	CV-110-2	CAPACITOR, VARIABLE	
3	14	CM30F162G	CAPACITOR, 1600 MMF	
1	13	CM15B150K	CAPACITOR, 15 MMF	C1179
3	12	CM15F331G	CAPACITOR, 330 MMF	
1	11	CM15F111G	CAPACITOR, 110 MMF	C1178
4	10	CF-134-5-0	COIL FORM	
3	9	A-2481	COIL, FORM	
1	8	TZ-115	TRANSFORMER	T1009
3	7	LWE10MRN	LOCKWASHER, EXT.	
4	6	FW-101-1	FLATWASHER, NYLON	
4	5	NT-137-0632	NUT, NYLON	
4	4	SC-143-0632-B-10	SCREW, NYLON	
8	3	TE-104-4	LUG, GROUND	
4	2	MS-2897	STRAP, GROUND	
1	1	PX-649(LD-1128)	TERMINAL BOARD, RE. (LETTERED)	A1015

REV	ZONE	DESCRIPTION	DATE	CH. NO.	DRAFTS	CHECKER	ENG. APP.
E	12	ITEM (20) WAS CM15C240J 22MMF	6-10-62	615			
D	10	PICTORIAL SYMBOL NO. L1048 & ITEM (27) ADDED	8-23-62	7139	G.D.L.		
C	9	ITEM (7) REMOVED (LEFT TOP CORNER) WIRING CLARIFIED					
B	8	ITEM (10) WIRING CLARIFIED - ITEM (11) WAS AC-167					
A	7	ITEM (10) & (15) WERE DELETED - ITEM (20) ADDED					
	6	ITEM 21 WAS A-2495, ITEM 8 WAS A-2531	7-27-62	6945			
	5	ITEM 7 WAS LW10MS0	7-12-62	6922			
	4	ITEM 2 WAS MS-2897	6-24-62	1			
	3	COMPLETELY REVISED					

UNLESS OTHERWISE SPECIFIED:
 DIMENSIONS ARE IN INCHES
 TOLERANCES ON FRACTIONS ± 1/64 DECIMALS ± .005 ANGLES ± 1/2°
 SCALE
 MAXIMUM ALLOWABLE TOLERANCES HAVE BEEN DETERMINED AND ANY DEVIATIONS WILL BE CAUSE FOR REJECTION. REMOVE ALL BURRS & SHARP EDGES

REQ. PER UNIT	MODEL	SECTION	ASBY. NO.	DATE	TYPE & TEMPER	HEAT TREAT. SPEC.	FINISH & SPEC. NO.
1	HFR-11T		A-2532	2-2-62			
THE TECHNICAL MATERIEL CORP. MAMARONECK, NEW YORK AX-368 ASS'Y. (P.F. BOARD BAND*8) DRAWN: J.ANGER CHECKED: J.ANGER FINAL APPROVAL: J.ANGER ELEC. DES. APP. MECH. DES. APP. SHEET OF							

A-2378