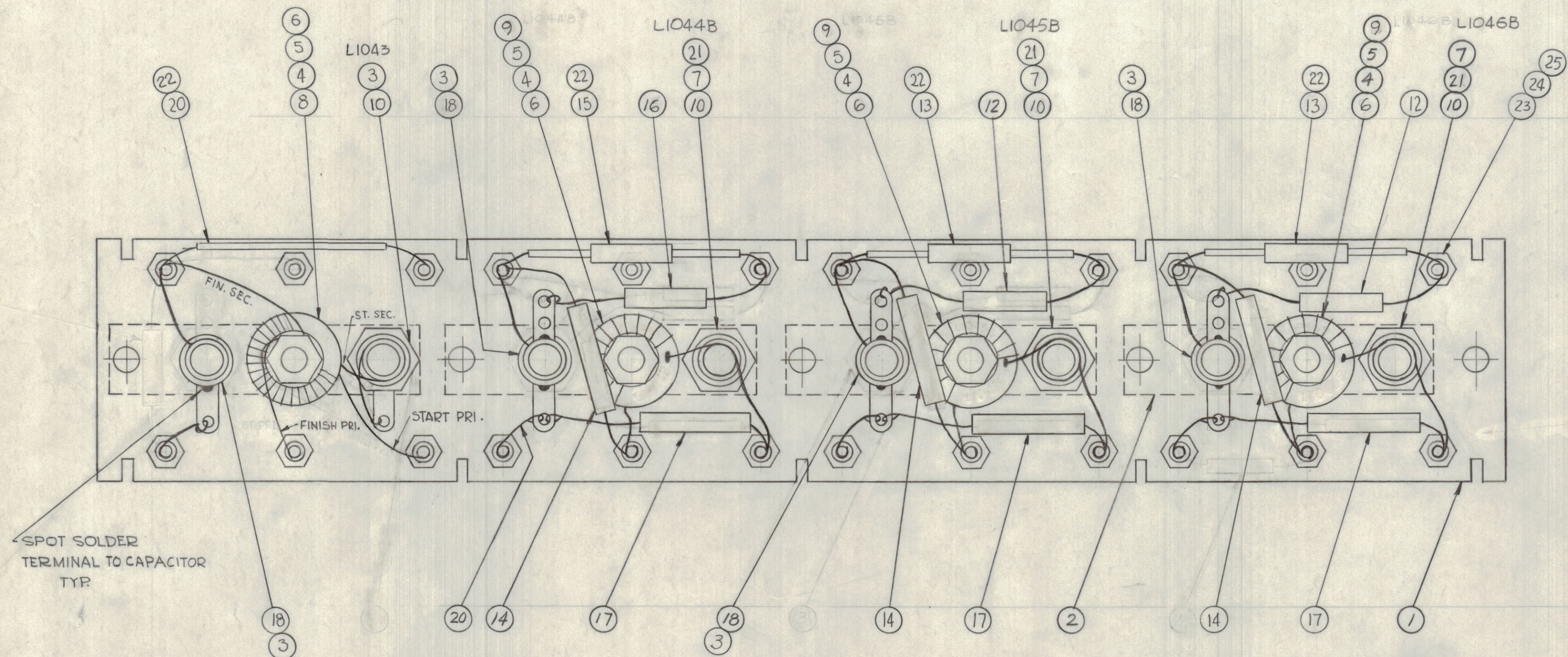


NOTICE TO PERSONS RECEIVING THIS DRAWING

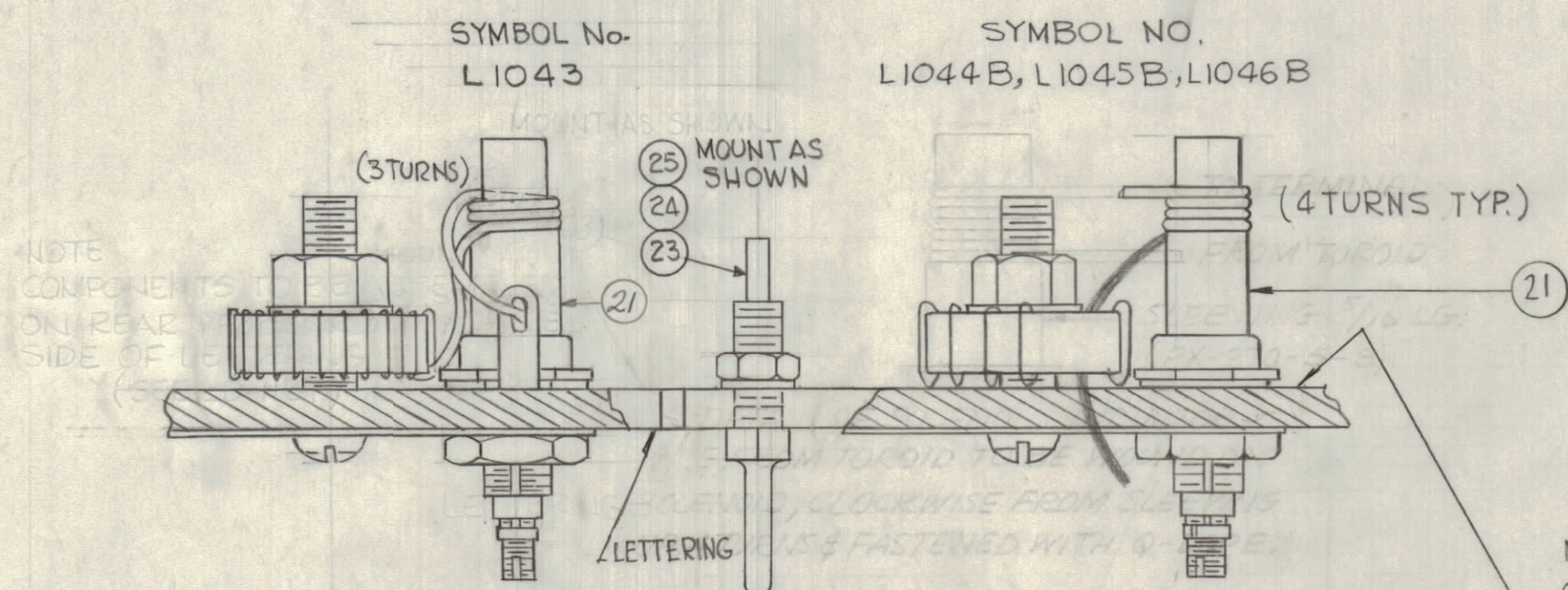
THE TECHNICAL MATERIEL CORPORATION claims proprietary right in the material disclosed herein. This drawing is issued in confidence or engineering information only and may not be reproduced or used to manufacture any thing shown hereon without permission from THE TECHNICAL MATERIEL CORPORATION to the user. This drawing is loaned for mutual assistance and is subject to recall at any time.

Property of:
THE TECHNICAL MATERIEL CORPORATION
MAMARONECK, NEW YORK



NOTE
COMPONENTS TO BE ASSEMBLED ON REAR OF BOARD, OPPOSITE SIDE OF LETTERING (SEE LD-1127)

SPOT SOLDER TERMINAL TO CAPACITOR TYP



PROCEDURE FOR WINDING TRIM COIL
1-PUSH ITEM #21 SEEVING ON COIL FORM AS SHOWN.
2-WIND LONG LEAD FROM TOROID CLOCKWISE TIGHTLY AGAINST SLEEVING. NO. OF TURNS AS SHOWN
3-STRIP ENAMEL FROM END NEAR TERMINAL WRAP & SOLDER SECURELY TO TERMINAL SHOWN.
4-COAT WITH GLI02, Q-MAX TO HOLD TURNS IN PLACE.

C1153, C1155, C1160, C1165

C1154, C1159, C1164

C1156, C1161, C1166

L1044A, L1045A, L1046A

#	27	DELETED	DELETED	
#	26	DELETED	DELETED	
	24 25	NTH 0940BNG	NUT, HEX	
	24 24	LWS 04MEN	LOCKWASHER, SPRING TYPE	
	24 23	TE-191	TERMINAL	
X	22	PX-104-1-.034	INSULATION SLEEVING #20	
4	21	PX-370-2-8	INSULATION, SLEEVING 5/16 LG.	
X	20	WL-100-6	WIRE, BUSS #20 AWG	
X	19	BS-100	SOLDER, SOFT	
4	18	CV-110-3	CAPACITOR, VARIABLE	
3	17	CM30F162G	CAPACITOR, 1600 MME	
1	16	CM15C820G	CAPACITOR, 82 MME	C 1158
1	15	CM15C270J	CAPACITOR, 27 MME	C 1157
3	14	CM15F431G	CAPACITOR, 430 MME	
2	13	CM15C240J	CAPACITOR, 24 MME	C1162, C1167
2	12	CM15F161G	CAPACITOR, 160 MME	C1163, C1168
1	11	GL-102	Q-MAX	
4	10	CF-134-5-E	COIL FORM	
3	9	A-2480	COIL, RF ASS'Y	
1	8	TZ-114	TRANSFORMER	T100B
3	7	LWE10 MRN	LOCKWASHER, EXT.	
4	6	FW-101-1	FLATWASHER, NYLON	
4	5	NT-137-0632	NUT, NYLON	
4	4	SC-143-0632-B-10	SCREW, NYLON	
8	3	TE-104-4	LUG, GROUND	
4	2	MS-2897	STRAP, GROUND	
1	1	PX-649 (LD-1127)	TERMINAL BOARD, RF (LETTERED)	A 1013

D	C2	ITEM (27) CHISBIOBK, (SYM C1195) DELETED	11-14-62	7628	68	16		
C	B9, 10	PICTORIAL SYMBOL NO. L1043 ADDED	8-22-62	7139	GOL	16		
	E9, 10	ITEM (27) ADDED, ITEM (26) AC-165 DELETED						
	E8, 9, 10	ITEM (20) REMOVED (LEFT TOP COILS) WIRING CLARIFIED						
	E8, 9, 10	ITEM (20) WIRING CLARIFIED, ITEMS (10) & (11) WERE REQ 3 & X						
B	B7	ITEM 7 WAS LWE10MSG, ITEM 8 WAS A-2531	7-25-62	6945	GR			
A	B2, C2	ITEM 12 WAS CHISBIOBK, ITEM 26 WAS A-2494	6-29-62					
		COMPLETELY REVISED						
SYM	ZONE	DESCRIPTION	DATE	CH. NO.	DRAFTS	CHECKER	ENG. APP.	

DIMENSIONS ARE IN INCHES
TOLERANCES ON FRACTIONS ± 1/64 DECIMALS ± .005 ANGLES ± 1/2°
SCALE
MAXIMUM ALLOWABLE TOLERANCES HAVE BEEN DETERMINED AND ANY DEVIATIONS WILL BE CAUSE FOR REJECTION. REMOVE ALL BURRS & SHARP EDGES

1	HRF-1/T		A-2532	2-1-62			
REQ. PER UNIT	MODEL	SECTION	ASSY. NO.	DATE	TYPE & TEMPER	HEAT TREAT. SPEC.	

THE TECHNICAL MATERIEL CORP. MAMARONECK, NEW YORK			
AX-367 ASS'Y (RF BOARD BAND #7)			
DRAWN	CHECKED	FINAL APPROVAL	
J. ANGER		A-2377	
FINISH & SPEC. NO.		ELEC. DES. APP.	MECH. DES. APP.
		SHEET OF	

A-2377