

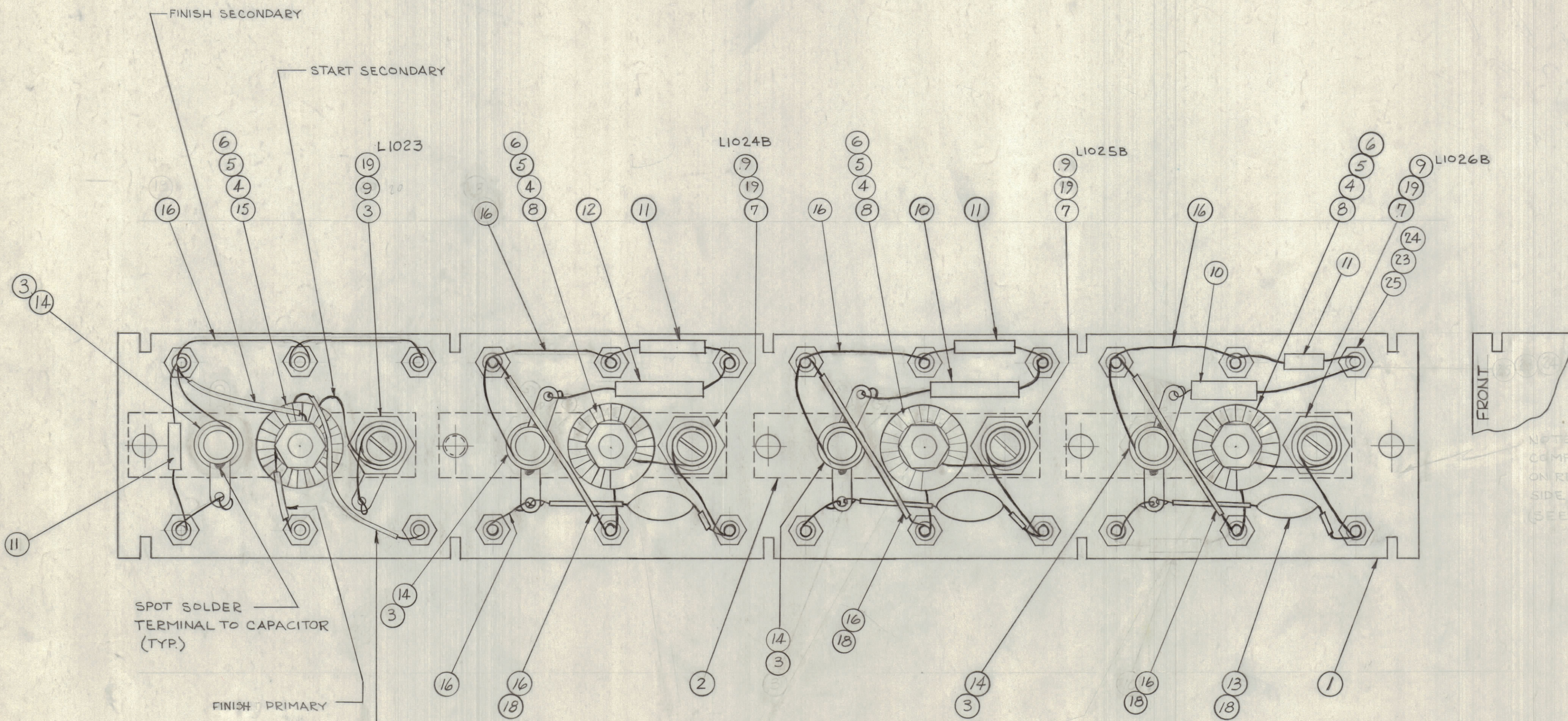
NOTICE TO PERSONS RECEIVING THIS DRAWING

THE TECHNICAL MATERIEL CORPORATION claims proprietary right in the material disclosed herein. This drawing is issued in confidence for engineering information only and may not be reproduced or used to manufacture any item shown herein without permission from THE TECHNICAL MATERIEL CORPORATION to the user. This drawing is loaned for mutual assistance and is subject to recall at any time.

Property of:
THE TECHNICAL MATERIEL CORPORATION
MAMARONECK, NEW YORK

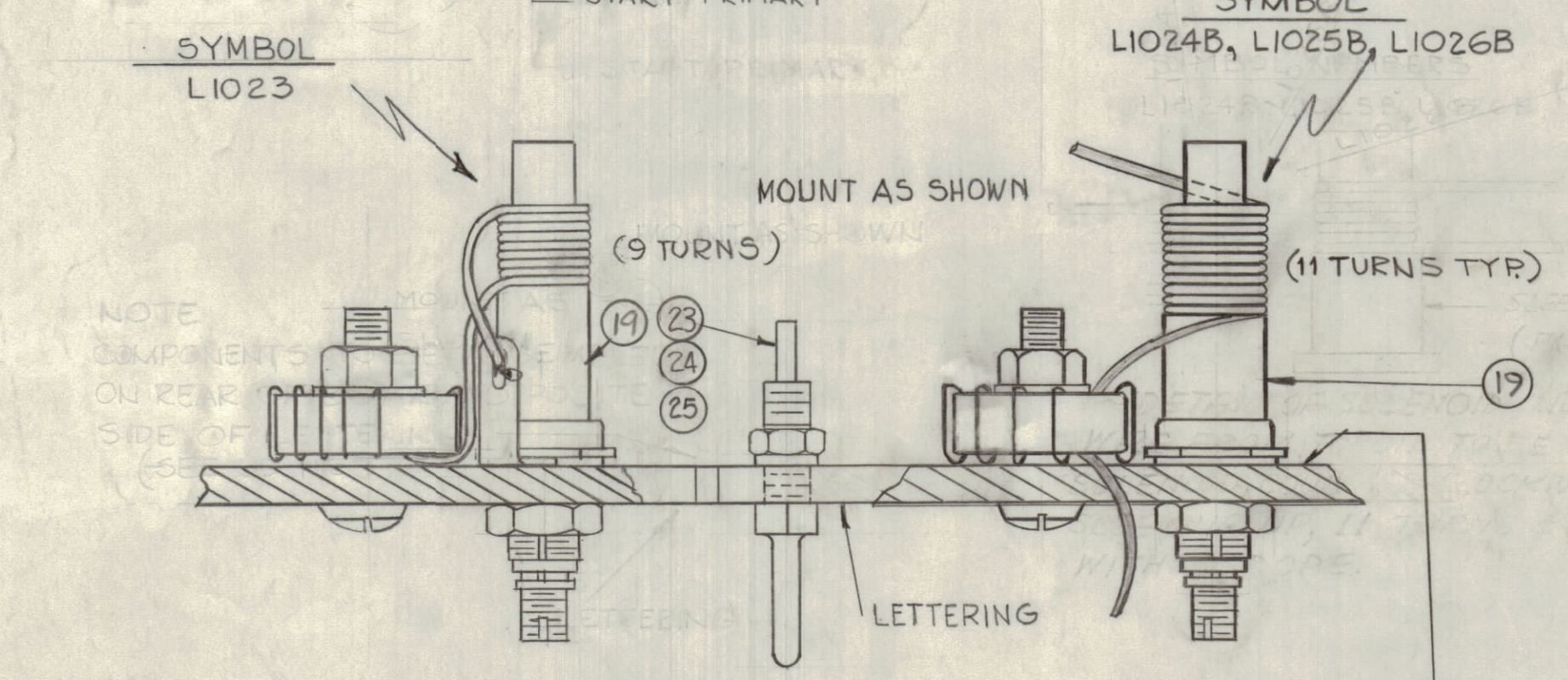
PROCEDURE FOR WINDING TRIM COILS

1. PUSH ITEM 19 PX-370-2-8 SLEEVING ON COIL FORM AS SHOWN.
2. WIND LONG LEAD FROM TOROID COUNTER CLOCKWISE 11 TURNS TIGHTLY AGAINST SLEEVING AND COIL FORM.
3. STRIP ENAMEL FROM END NEAR TERMINAL, WRAP & SOLDER SECURELY TO TERMINAL AS SHOWN.
4. COAT WITH GL 102 Q-MAX TO HOLD TURNS IN PLACE.



FRONT

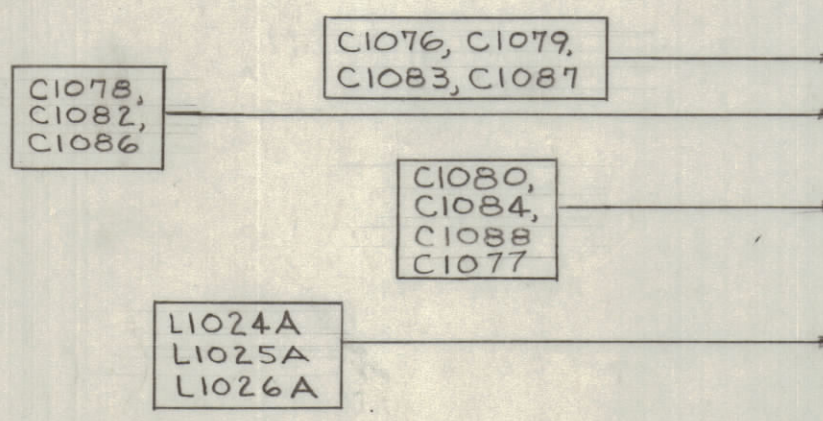
NOTE:
COMPONENTS TO BE ASSEMBLED ON REAR OF BOARD, OPPOSITE SIDE OF LETTERING. (SEE LD-1123)



PROCEDURE FOR WINDING TRIM COILS

1. PUSH ITEM 19 PX-370-2-8 SLEEVING ON COIL FORM AS SHOWN.
2. WIND LONG LEAD FROM TOROID COUNTER CLOCKWISE (NO OF TURNS AS SHOWN) TIGHTLY AGAINST SLEEVING AND COIL FORM.
3. STRIP ENAMEL FROM END NEAR TERMINAL, WRAP & SOLDER SECURELY TO TERMINAL, SHOWN.
4. COAT WITH GL 102 Q-MAX TO HOLD TURNS IN PLACE.

NOTE:
COMPONENTS TO BE ASSEMBLED ON REAR OF BOARD, OPPOSITE SIDE OF LETTERING (SEE LD-1123)



24	25	NTH0440BNG	NUT, HEX.	
24	24	LWS04MRN	LOCKWASHER, SPRING TYPE	
24	23	TE-191	TERMINAL	
X	22	GL102	Q-MAX.	
	21			
	20			
4	19	PX-370-2-8	INSULATION, SLEEVING, 5/16 L.G.	
X	18	PX-104-1-.034	INSULATION, SLEEVING, #20	
X	17	BS-100	SOLDER, SOFT	
X	16	WL-100-6	WIRE, BUSS, #20 AWG.	
	15	TZ-110	TRANSFORMER	T1004
4	14	CV-110-3	CAPACITOR, VARIABLE	
3	13	CC-100-24	CAPACITOR, .02 MF	
1	12	CM30F152G	CAPACITOR, 1500 MMF	C1081
4	11	CM15C820G	CAPACITOR, 82 MMF	
2	10	CM30F202G	CAPACITOR, 2000 MMF	C1085 C1089
4	9	CF-134-5-E	COIL FORM	
3	8	A-2476	COIL, RF, ASSY	
3	7	LWE 10 MRN	LOCKWASHER, EXT	
4	6	FW-101-1	FLATWASHER, NYLON	
4	5	NT-137-0632	NUT, NYLON	
4	4	SC-143-0632-B-10	SCREW, NYLON	
8	3	TE-104-4	LUG, GROUND	
4	2	MS-2897	STRAP, GROUND	
1	1	PX-649(LD-1123)	TERMINAL BOARD RF (LETTERED)	A1005

59, 10	PICTORIAL SYMBOL L1023 ADDED					
B	ITEMS (5), (11), (19) Req. WERE, 3, 3, X	8.21.62	7139	GOL	WELLS	
E-10	ITEM 10 REMOVED (LEFT TOP CORNER) WIRING CLARIFIED					
P-19, CE	ON ITEM (5) WIRING CLARIFIED (ATTN: CO.) (2) (3) (4) (6) (8) (10) (12) (14) (16) (18) (20) (22) (24) (25)					
B	ITEM 7 WAS LWE10MRN ITEM 15 WAS A-152L, ITEM 16 WAS A-2492	7-25-62	6945	F.H.	WELLS	
A	COMPLETELY REVISED	6-29-62	1			
SYM	ZONE	DESCRIPTION	DATE	CH. NO.	DRAFTS	CHECKER
						ENG. APP.

UNLESS OTHERWISE SPECIFIED:
DIMENSIONS ARE IN INCHES
TOLERANCES ON
FRACTIONS ± 1/64
DECIMALS ± .005
ANGLES ± 1/2°

SCALE
MAXIMUM ALLOWABLE TOLERANCES HAVE BEEN DETERMINED AND ANY DEVIATIONS WILL BE CAUSE FOR REJECTION. REMOVE ALL BURRS & SHARP EDGES

1	HFR-1/T		A-2532	1-30-62
REQ. PER UNIT	MODEL	SECTION	ASS'Y. NO.	DATE

TYPE & TEMPER	HEAT TREAT. SPEC.	FINISH & SPEC. NO.	ELEC. DES. APP.	MECH. DES. APP.	SHEET	OF
			J. ANGER		A-2373	C

A-2373-C

A