

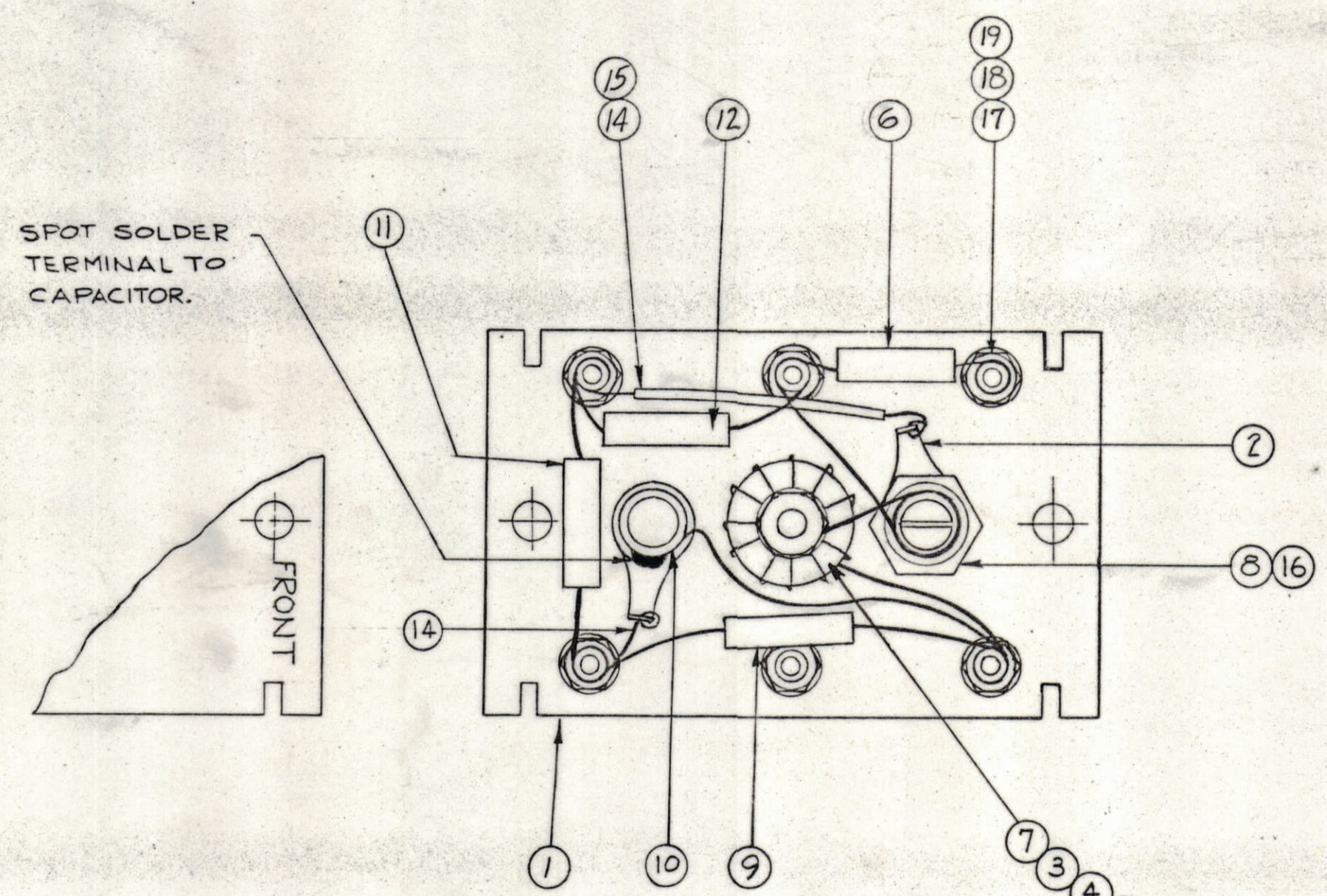
PROPERTY OF PERSONS RECEIVING THIS DRAWING
 THE TECHNICAL MATERIEL CORPORATION claims
 copyright in the material disclosed herein
 and is hereby in confidence for exclusive use
 of the recipient only and may not be reprinted or used
 in any manner without the written consent of
 THE TECHNICAL MATERIEL CORPORATION.
 This drawing is loaned for mutual
 assistance and is subject to recall at any time.

Property of:
 THE TECHNICAL MATERIEL CORPORATION
 MAMARONECK, NEW YORK

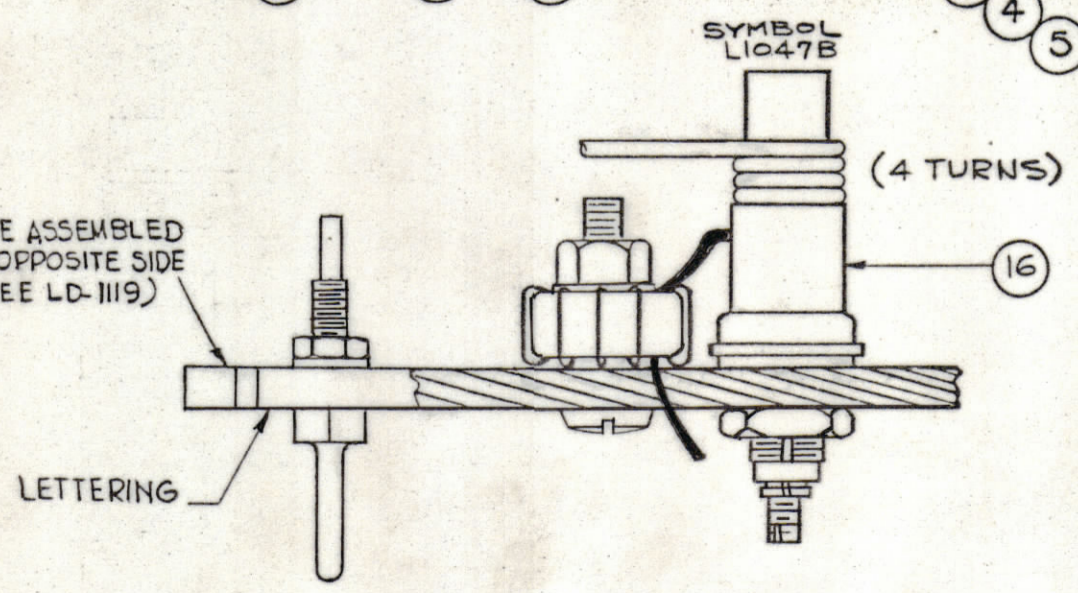
PROCEDURE FOR WINDING TRIM COIL

- 1 - PUSH ITEM 16 SLEEVING ON COIL FORM AS SHOWN.
- 2 - WIND LONG LEAD FROM TOROID CLOCKWISE, 4 TURNS TIGHTLY AGAINST SLEEVING.
- 3 - STRIP ENAMEL FROM END NEAR TERMINAL, WRAP & SOLDER SECURELY TO TERMINAL SHOWN.
- 4 - COAT WITH GL102, Q MAX. TO HOLD TURNS IN PLACE.

A-2369 A



NOTE:
 COMPONENTS TO BE ASSEMBLED
 ON REAR OF BOARD, OPPOSITE SIDE
 OF LETTERING. (SEE LD-1119)



REQ. ITEM	PART NO.	DESCRIPTION	SYMBOL
X 20	GL-102	Q-MAX	
6 19	NTH0440BNG	NUT, HEX	
6 18	LWS04MRN	LOCKWASHER, SPRING TYPE	
6 17	TE-191	TERMINAL	
X 16	PX-370-2-B	INSULATION, SLEEVING, 5/16 LG.	
X 15	PX-104-1-.034	INSULATION, SLEEVING	
X 14	WL-100-6	WIRE, BUSS, #20 AWG.	
X 13	BS-100	SOLDER, SOFT	
1 12	CM15F221G	CAPACITOR, 220MMF	C1169
1 11	CM15F131G	CAPACITOR, 130MMF	C1170
1 10	CV-110-2	CAPACITOR, VARIABLE .9-12	C1172
1 9	CM15C360J	CAPACITOR, 36 MMF	C1171
1 8	CF-134-5-0	COIL FORM	
1 7	A-2482	COIL, RF, ASSEMBLY	L1147A
1 6	CM15B050M	CAPACITOR, 5 MMF	C1173
1 5	FW-101-1	FLATWASHER, NYLON	
1 4	NT-137-0632	NUT, NYLON	
1 3	SC-143-0632-B-10	SCREW, NYLON	
2 2	TE-104-4	LUG, GROUND	
1 1	PX-650 (LD-1119)	TERMINAL BOARD, OSC. (LETTERED)	A-1014

REV.	DESCRIPTION	DATE	CH. NO.	DRAFTS	CHECKER	ENG. APP.
A	COMPLETELY REVISED	6-29-62	1	Sam		

UNLESS OTHERWISE SPECIFIED:
 DIMENSIONS ARE IN INCHES
 TOLERANCES ON
 FRACTIONS ± 1/64 DECIMALS ± .005 ANGLES ± 1/2°

SCALE
 MAXIMUM ALLOWABLE TOLERANCES HAVE BEEN DETERMINED AND ANY DEVIATIONS WILL BE CAUSE FOR REJECTION.
 RE MOVE ALL BURRS & SHARP EDGES

REQ. PER UNIT	MODEL	SECTION	ASSY. NO.	DATE
1	HFR-11T		A-2532	2-5-62

USED ON

FINISH & SPEC. NO.	ELEC. DES. APP.	MECH. DES. APP.	SHEET OF
	J. ANGER		A-2369 A

DEFIANCE NO. 1080