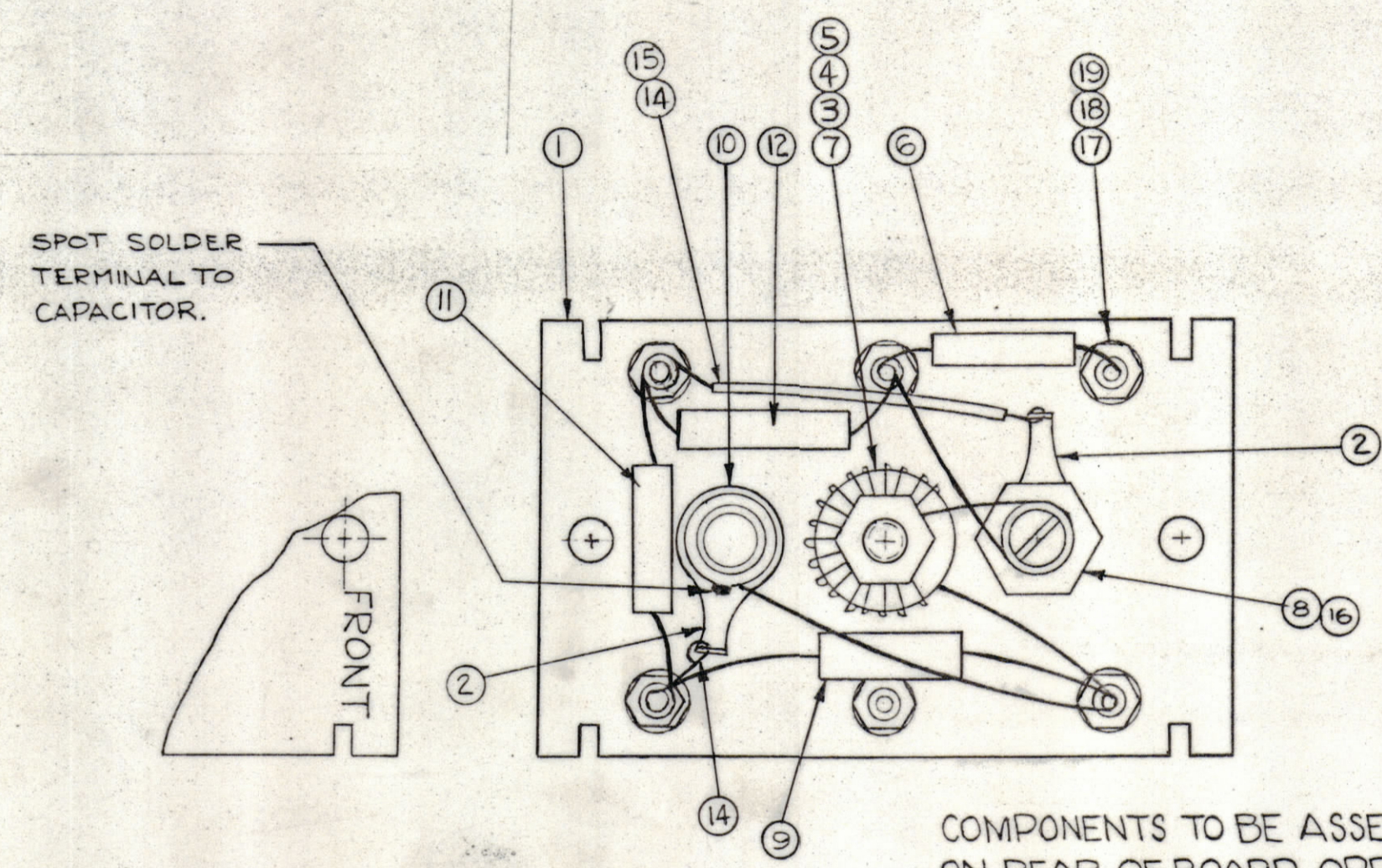


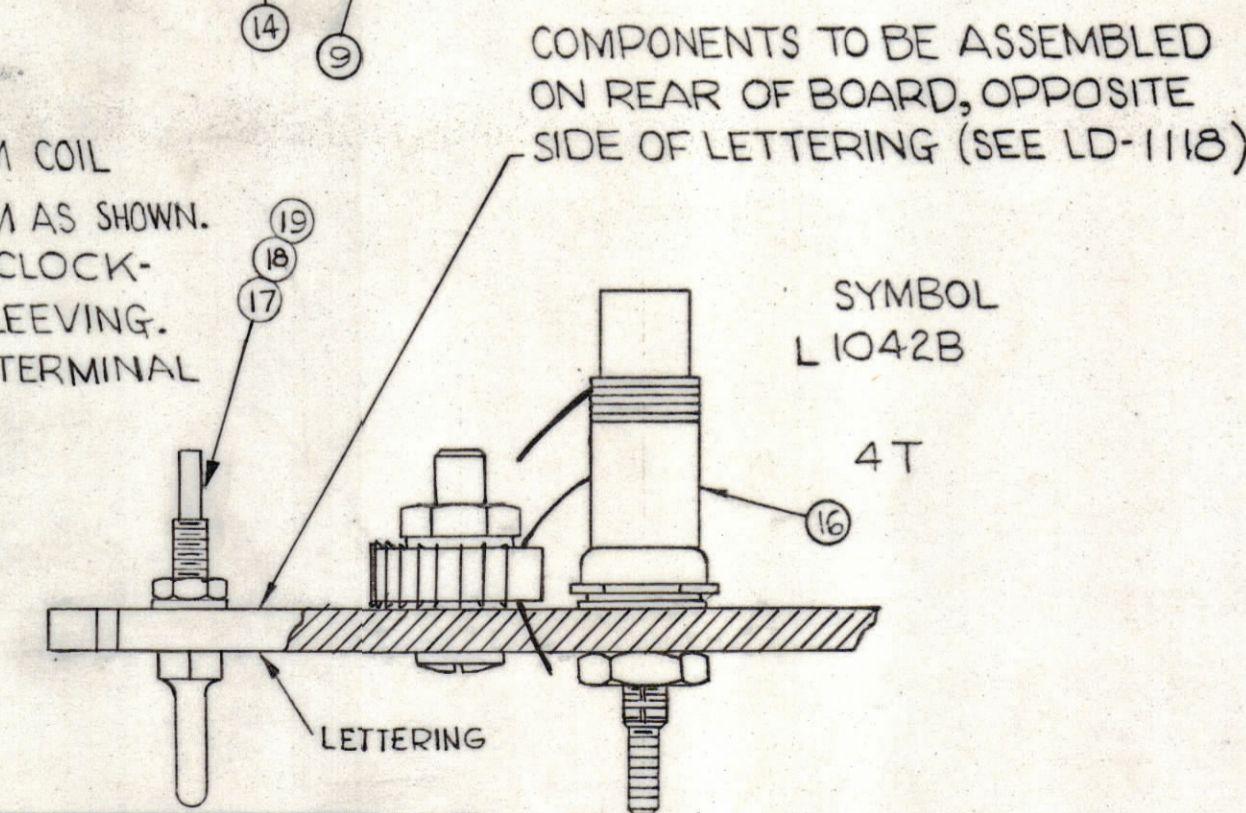
NOTICE TO PERSONS RECEIVING THIS DRAWING

THE TECHNICAL MATERIEL CORPORATION claims proprietary right in the material disclosed hereon. This drawing is issued in confidence for engineering information only and may not be reproduced or used to manufacture anything shown hereon without permission from THE TECHNICAL MATERIEL CORPORATION to the user. This drawing is loaned for mutual assistance and is subject to recall at any time.

Property of:  
THE TECHNICAL MATERIEL CORPORATION  
MAMARONECK, NEW YORK



- PROCEDURE FOR WINDING TRIM COIL
- 1- PUSH ITEM 16 SLEEVING ON COIL FORM AS SHOWN.
  - 2- WIND LONG LEAD FROM TOROID CLOCK-WISE 4 TURNS TIGHTLY AGAINST SLEEVING.
  - 3- STRIP ENAMEL FROM END NEAR TERMINAL WRAP AND SOLDER SECURELY TO TERMINAL SHOWN.
  - 4- COAT WITH GL-102 Q-MAX. TO HOLD TURNS IN PLACE



COMPONENTS TO BE ASSEMBLED ON REAR OF BOARD, OPPOSITE SIDE OF LETTERING (SEE LD-1118)

|   |    |                  |                                |        |
|---|----|------------------|--------------------------------|--------|
| X | 20 | GL-102           | Q-MAX.                         |        |
| G | 19 | NTH0440BNG       | NUT, HEXAGON                   |        |
| G | 18 | LWS04 MRN        | LOCKWASHER, SPRING TYPE        |        |
| G | 17 | TE-191           | TERMINAL                       |        |
| X | 16 | PX-370-2-8       | INSULATION, SLEEVING 5/16" LG  |        |
| X | 15 | PX-104-1-034     | INSULATION, SLEEVING *20       |        |
| X | 14 | WL-100-6         | WIRE, BUSS #20 AWG             |        |
| X | 13 | BS-100           | SOLDER, SOFT                   |        |
| I | 12 | CM20F561G        | CAPACITOR, 560 MMF             | C1148  |
| I | 11 | CM15F331G        | CAPACITOR, 330 MMF             | C1149  |
| I | 10 | CV-110-3         | CAPACITOR, VARIABLE .9-18      | C1151  |
| I | 9  | CM15F111G        | CAPACITOR, 110 MMF             | C1150  |
| I | 8  | CF-134-5-E       | COIL, FORM                     |        |
| I | 7  | A-2480           | COIL, R.F. ASSEMBLY            | L1042A |
| I | 6  | CM15B100K        | CAPACITOR, 10 MMF              | C1152  |
| I | 5  | FW-101-1         | FLATWASHER, NYLON              |        |
| I | 4  | NT-137-0632      | NUT, NYLON                     |        |
| I | 3  | SC-143-0632-B-10 | SCREW, NYLON                   |        |
| 2 | 2  | TE-104-4         | LUG, GROUND                    |        |
| I | 1  | PX-650(LD-1118)  | TERMINAL BOARD, OSC.(LETTERED) | A1012  |

|     |         |   |         |         |         |           |
|-----|---------|---|---------|---------|---------|-----------|
| REV | DATE    | DESCRIPTION                             | CH. NO. | DRAFTER | CHECKER | ENG. APP. |
| B   | 6-7-62  | NOTE 2 WAS 5 TURNS, ITEM (7) WAS A-2482 | 0218    |         |         |           |
| A   | 6-29-62 | COMPLETELY REVISED                      | 1       |         |         |           |

UNLESS OTHERWISE SPECIFIED:  
DIMENSIONS ARE IN INCHES  
TOLERANCES ON FRACTIONS ± 1/64 DECIMALS ± .005 ANGLES ± 1/2°

SCALE DO NOT SCALE

MAXIMUM ALLOWABLE TOLERANCES HAVE BEEN DETERMINED AND ANY DEVIATIONS WILL BE CAUSE FOR REJECTION. REMOVE ALL BURRS & SHARP EDGES

|               |         |         |           |        |
|---------------|---------|---------|-----------|--------|
| REQ. PER UNIT | MODEL   | SECTION | ASSY. NO. | DATE   |
| 1             | HFR-11T |         | A-2532    | 2-5-62 |

|  |          |                                 |        |
|--|----------|---------------------------------|--------|
| REQ. ITEM  | PART NO. | DESCRIPTION                     | SYMBOL |
| THE TECHNICAL MATERIEL CORP.<br>MAMARONECK, NEW YORK |          |                                 |        |
| AX-374 ASS'Y<br>(OSC. BOARD BAND #6)                 |          |                                 |        |
| MATERIAL   |          | 05                              | 114    |
| TYPE & TEMPER  |          | HEAT TREAT. SPEC.               |        |
| FINISH & SPEC. NO.                                   |          | ELEC. DES. APP. MECH. DES. APP. |        |
| DRAWN  |          | CHECKED                         |        |
| J. ANGER   |          | A-2368                          |        |
| SHEET  |          | OF                              |        |