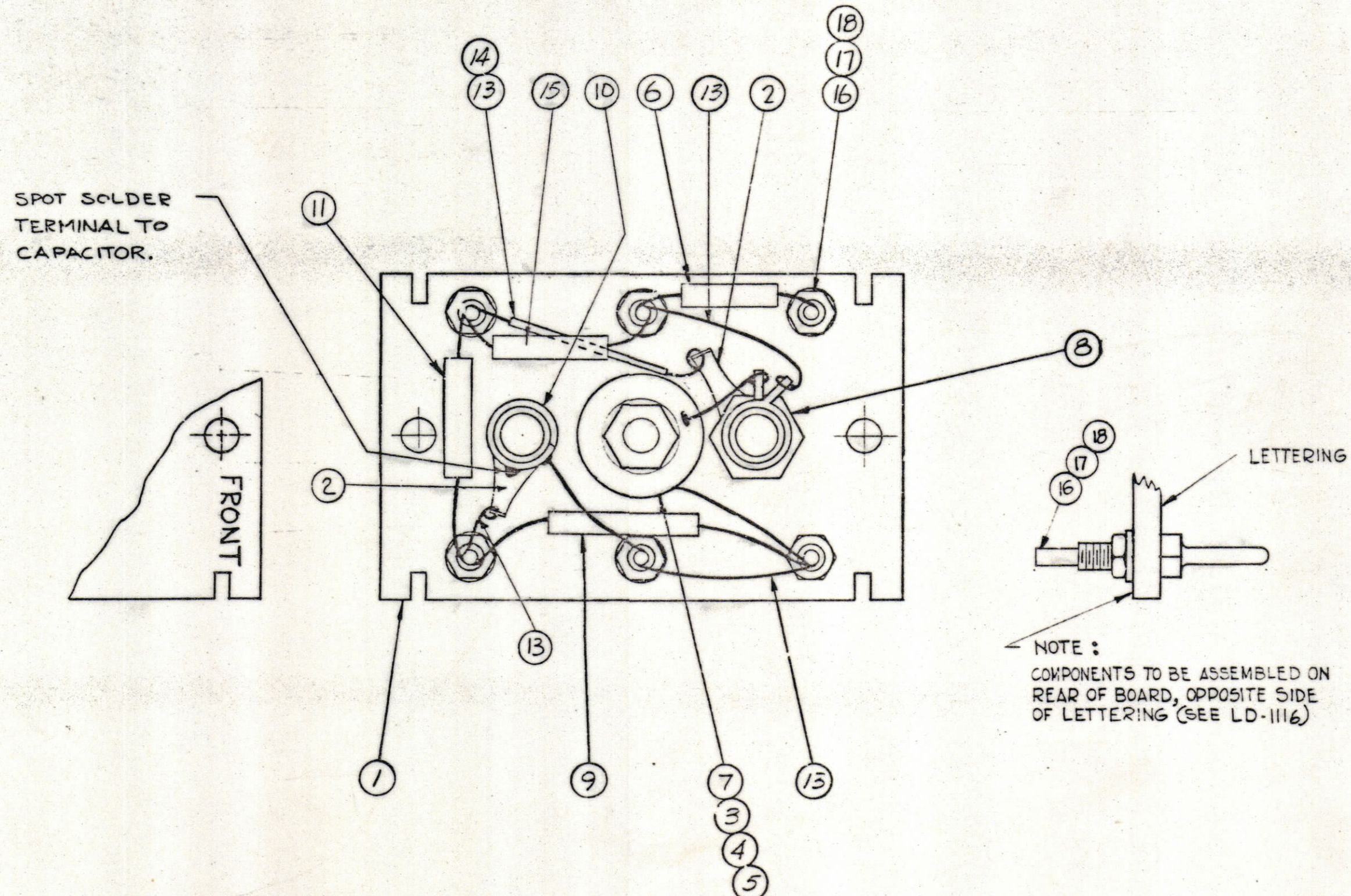


NOTE TO PERSONS RECEIVING THIS DRAWING
 THE TECHNICAL MATERIEL CORPORATION claims proprietary right in the material disclosed hereon. This drawing is issued in confidence for engineering information only and may not be reproduced or used to manufacture anything shown hereon without permission from THE TECHNICAL MATERIEL CORPORATION to the effect. This drawing is loaned for mutual assistance and is subject to recall at any time.
 Property of:
 THE TECHNICAL MATERIEL CORPORATION
 MAMARONECK, NEW YORK



NOTE:
 COMPONENTS TO BE ASSEMBLED ON REAR OF BOARD, OPPOSITE SIDE OF LETTERING (SEE LD-1116)

6	18	NTH0440BNG	NUT, HEX.	
6	17	LWS04MRN	LOCKWASHER, SPRING TYPE	
6	16	TE-191	TERMINAL	
1	15	CM20F911G	CAPACITOR, 910 MMF	C1109
X	14	PX-104-1-.034	INSULATION, SLEEVING #20	
X	13	WL-100-6	WIRE, BUSS #20	
X	12	BS-100	SOLDER, SOFT	
1	11	CM20F821G	CAPACITOR, 820 MMF	C1110
1	10	CV-110-3	CAPACITOR, VARIABLE	C1113
1	9	CM15F181G	CAPACITOR, 180 MMF	C1112
1	8	AC-169	COIL, RF, TUNED	L1054
1	7	CL-301	COIL, RF, ASSY.	L1032
1	6	CM15C240J	CAPACITOR 24 MMF	C1114
1	5	FW-101-1	FLATWASHER, NYLON	
1	4	NT-137-0632	NUT, NYLON	
1	3	SC-143-0632-B-10	SCREW, NYLON	
2	2	TE-104-4	LUG, GROUND	
1	1	PX-650(LD-1116)	TERMINAL BOARD OSC.(LETTERED)	A1008

REQ. ITEM	PART NO.	DESCRIPTION	SYMBOL
ANGAR			
THE TECHNICAL MATERIEL CORP. MAMARONECK, NEW YORK			
STOCK SIZE			
AX-372 ASS'Y (OSC BOARD BAND #4)			
MATERIAL			
TYPE & TEMPER			
HEAT TREAT. SPEC.			
FINISH & SPEC. NO.			
ELEC. DES. APP.		MECH. DES. APP.	
SHEET		OF	

D	B2	ITEM (7) WAS A-2490; (8) WAS A-2497	2-7-63	2094				
C	B2	ITEM (6) WAS CM15C020J	8-23-62	7142	GB			
B	B2	REF. WAS LD-1117 (ON ITEM #1)	7-12-62	6922				
A		COMPLETELY REVISED	8-29-62	1	DM			
SYM	ZONE	DESCRIPTION	DATE	CH. NO.	DRAFTS	CHECKER	ENG. APP.	

UNLESS OTHERWISE SPECIFIED:
 DIMENSIONS ARE IN INCHES
 TOLERANCES ON
 FRACTIONS ± 1/64 DECIMALS ± .005 ANGLES ± 1/2°

MAXIMUM ALLOWABLE TOLERANCES HAVE BEEN DETERMINED AND ANY DEVIATIONS WILL BE CAUSE FOR REJECTION. REMOVE ALL BURRS & SHARP EDGES

1	HR-11T	A-2532	2-2-62
REQ. PER UNIT	MODEL	SECTION	DATE
USED ON			