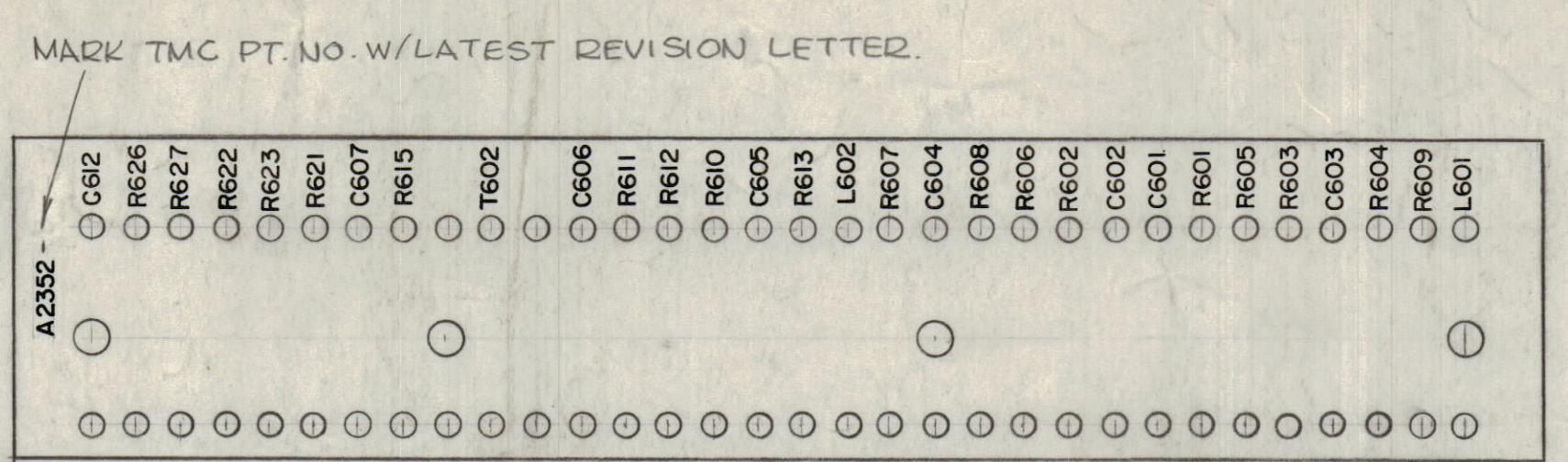


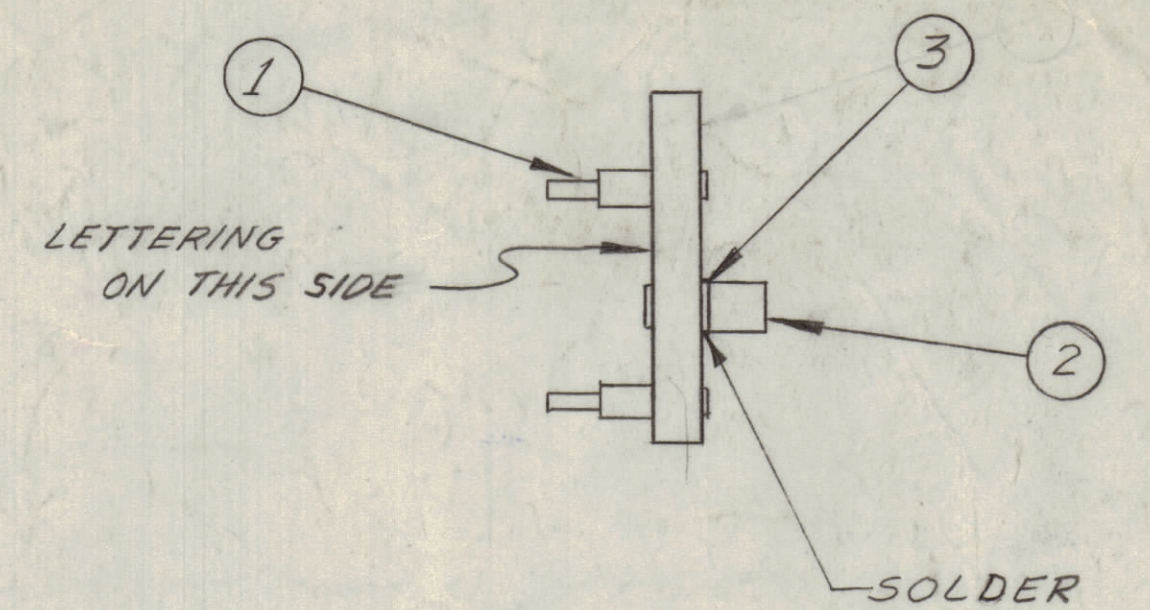
MATERIAL 1/8" NATURAL PHENOLIC, XXXP

STAGE 1 - MACHINING - (A 2352-1)

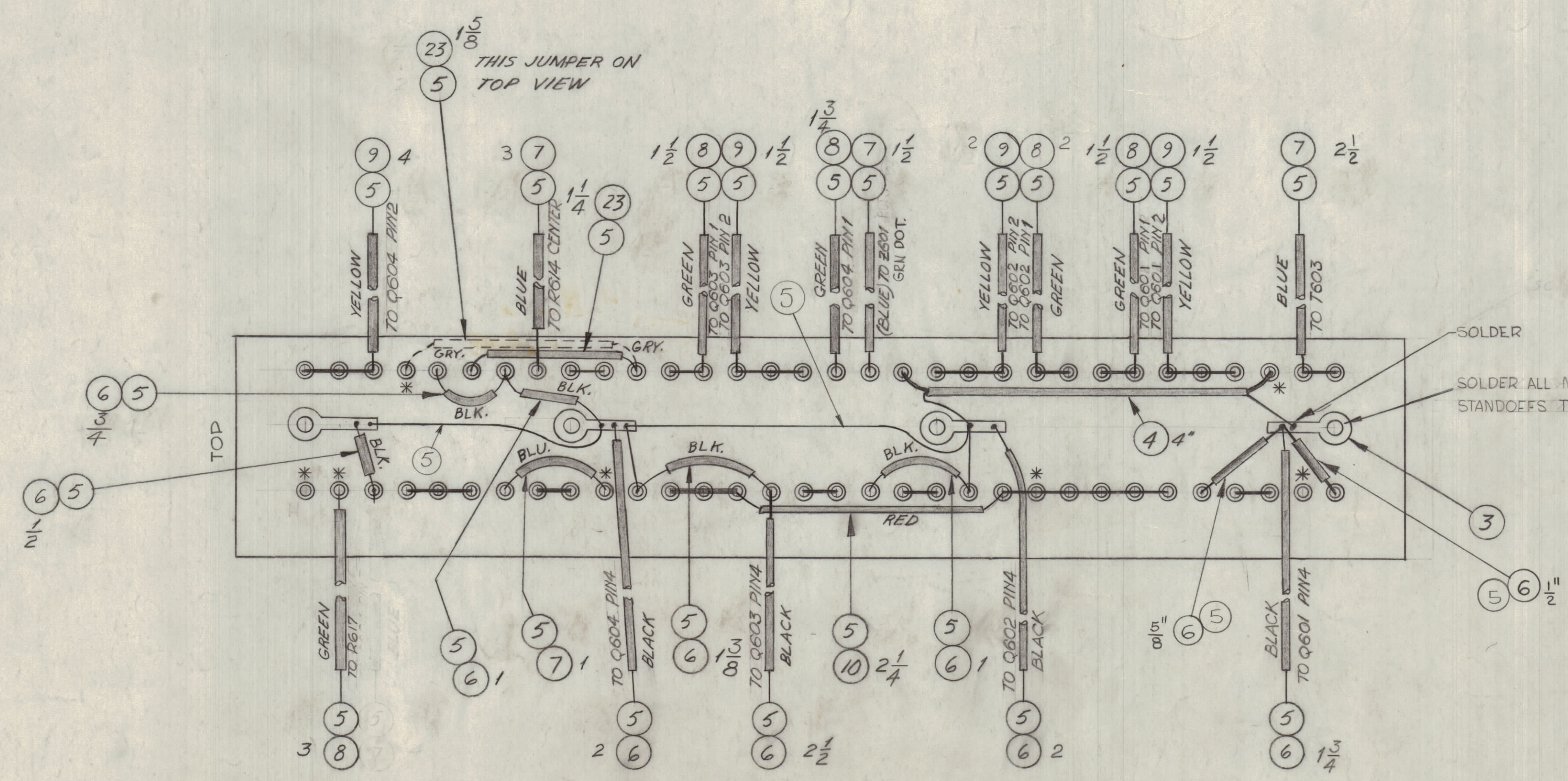


NOTE: ALL LETTERING 3/32" HIGH, BLACK GOTHIC AS SHOWN.  
MARKING PROCESS: AS PER TMC SPEC S 727

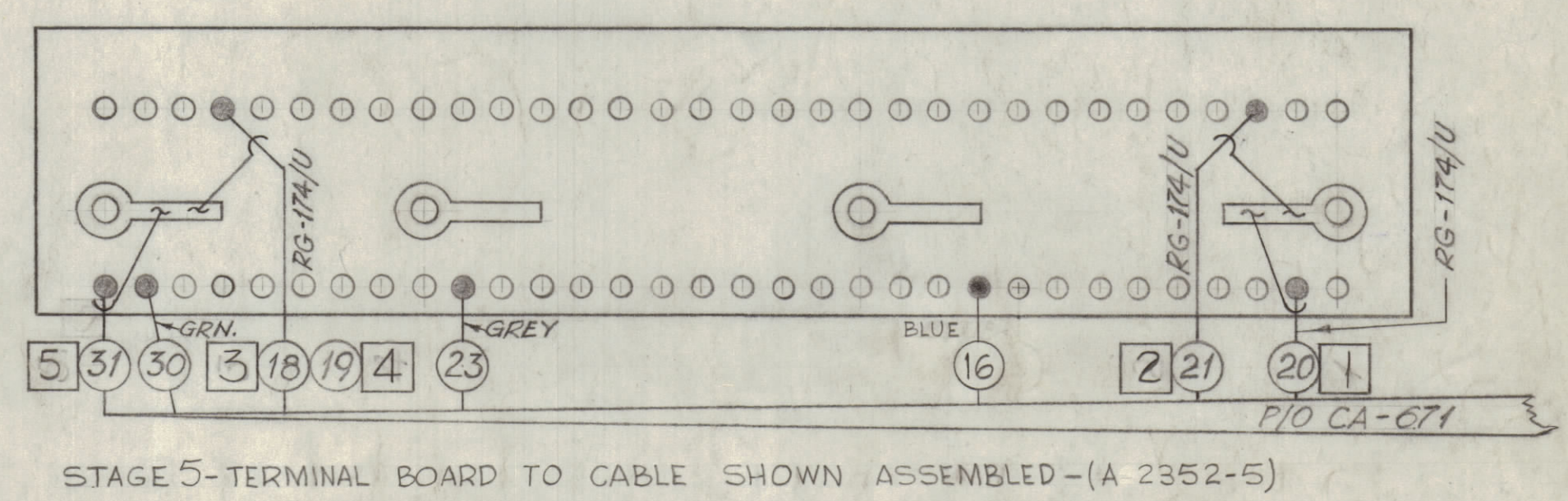
STAGE 2 - LETTERING - (A 2352-2)



STAGE 3 - SUB-ASSEMBLY - (A 2352-3)



NOTE: ALL BUSS WIRE (ITEM#5) TO EXTEND 1 1/2" BEYOND SLEEVING.  
\* DENOTES DO NOT SOLDER.  
NOTE: R621, R622, & R623 NOT SUPPLIED BY TMC.  
NOTE: TERMINALS WIRED AS PER TMC SPEC. S 203.  
STAGE 4 - FINAL ASSEMBLY - (A 2352-4)



STAGE 5 - TERMINAL BOARD TO CABLE SHOWN ASSEMBLED - (A 2352-5)

REQ.	ITEM	PART NO.	DESCRIPTION	SYMBOL
X	25	BS 100	SOLDER, SOFT	
1	24	RC20GF183J	RESISTOR	R626
	23	PX 104-7-022	INSULATED SLEEVING	GRAY
1	22	TF 228K15	TRANSFORMER, PULSE	T602
4	21	RC20GF223J	RESISTOR	
1	20	RC20GF103J		R615
1	19	RC20GF222J		R609
1	18	RC20GF562J		R613
3	17	RC20GF102J		
1	16	RC20GF681J		R611
2	15	RC20GF561J		R602 R601
2	14	RC20GF271J	RESISTOR	R607 R604 L602 L601
2	13	CL 140-1	COIL, RF MOLDED	
3	12	CC 100-28	CAPACITOR, DISC	
5	11	CC 100-16	CAPACITOR, DISC	
10	PX 104-3-022		INSULATED SLEEVING	RED
9	PX 104-2-022		INSULATED SLEEVING	YELLOW
8	PX 104-4-022		INSULATED SLEEVING	GREEN
7	PX 104-6-022		INSULATED SLEEVING	BLUE
6	PX 104-1-022		INSULATED SLEEVING	BLACK
5	WL 100-8		WIRE, BUSS BAR, TINNED	
4	RG 174/U		CABLE, RF MINIATURE	
4	TE 116-3		SOLDER, LUG	
4	2	TE 108-13	STANDOFF, RIVET TYPE	
64	1	TE 109-3	TERMINAL	

BYM	ZONE	DESCRIPTION	DATE	CH. NO.	DRAFTS	CHECKER	ENG. APP.
E		TOL ON RES WERE "K" (MIA-21824)	2.1.67	17767	LHO	ROB	
D		CLEARANCE CHANGE W/RE TERMINALS ADDED	8/18/67		NYC	ROB	
C	C5	26 CALLOUTS WITH DIM 5/8" 1/2" ADDED	9.3.64	12143	HPB	NYC	
B	D7B	STAGE 4, ITEM (5) ADDED TO (3) GROUND STRAPS	11.6.62	7559	HPB	NYC	
A	C9	PINS TO C604, BLUE, A, ITEM (5) DELETED (STAGE 4)	2-12-62	6333	HPB	NYC	
	A	INSULATION LENGTHS REVISED ON PICTORIAL					
		ITEM 6, 7, 8, 9, 23 WAS PX-100; 16 RHT WAS TO Q604					

NOTICE TO PERSONS RECEIVING THIS DRAWING  
THE TECHNICAL MATERIEL CORPORATION claims proprietary right in the material disclosed hereon. This drawing is issued in confidence for engineering information only and may not be re-reproduced or used to manufacture anything shown hereon without permission from THE TECHNICAL MATERIEL CORPORATION to the user. This drawing is loaned for mutual assistance and is subject to recall at any time.  
Property of:  
THE TECHNICAL MATERIEL CORPORATION  
MAMARONECK, NEW YORK

REQ. PER UNIT	MODEL	SECTION	ASS'Y. NO.	DATE	TYPE & TEMPER	HEAT TREAT. SPEC.	FINISH & SPEC. NO.
1	CSS-1A			1/24/62			

DRWN	CHEKED	FINAL APPROVAL
W	R220	HPB

THE TECHNICAL MATERIEL CORP.  
MAMARONECK, NEW YORK  
TERMINAL BOARD AND COMPONENT ASSEMBLY  
ELEC. DES. APP. MECH. DES. APP. SHEET OF  
A 2352 E