

A-2348 A

THE CONTENTS OF THIS DRAWING ARE THE EXCLUSIVE PROPERTY OF THE TECHNICAL MATERIEL CORP. ITS UNAUTHORIZED USE OR REPRODUCTION IN WHOLE OR IN PART IS STRICTLY FORBIDDEN.

COIL DATA

SPECIFICATIONS	PRIMARY	LINK
Cam	.25	.25
Cam Gear	109	109
Cam Driver	50	50
IND (uh)	335 - 365	-
Q	100 - 115	-
Coil Res. Ω	5	1.6
Freq. (KC)	790	-
Cond. (uuf)	1000	-
Resis. (Ω)	-	-

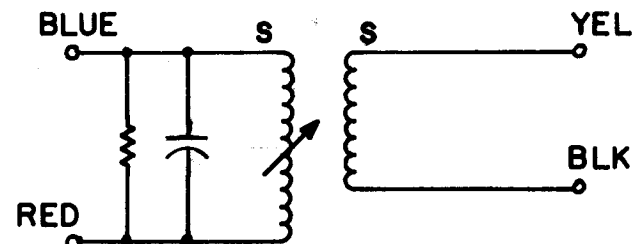
WINDING DATA

Turns	220	12
Wire	12/43	38 Osc.

WINDING INSTRUCTIONS

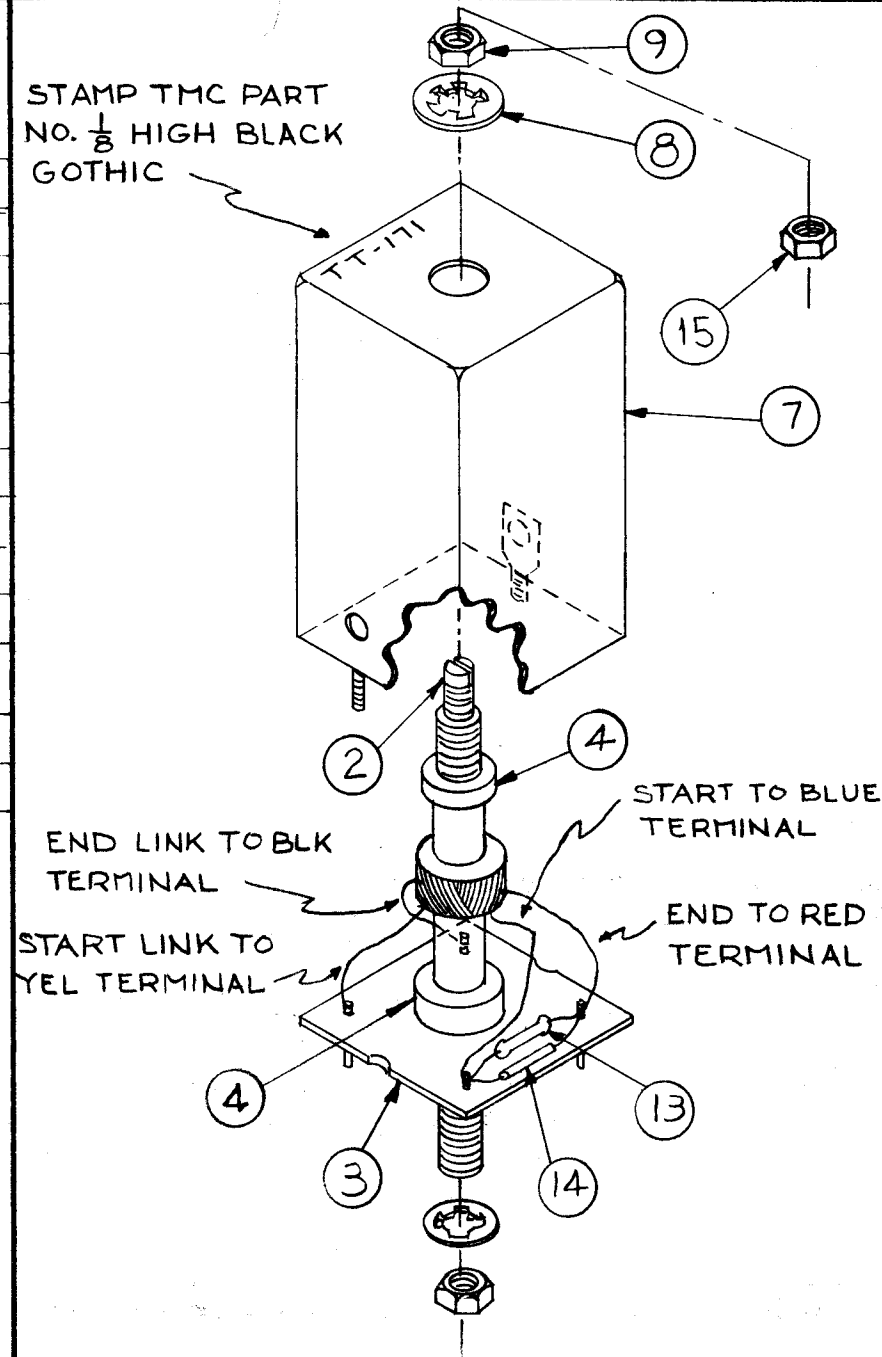
1. Wind primary first 220 turns of Item 5, starting 7/16" from end. Stake ends with Item 10.
2. Wind secondary 12 turns of Item 6, on top of primary and in same direction. Stake ends with Item 10.
3. Color code coil base as shown.
4. Strip and tin leads. Solder them to proper color-coded terminals on base.
5. Measure Q, IND, Res., without core.
6. Bake for twenty minutes at 215°F. Saturate coil with Item 11.
7. Solder component leads to terminals.
8. Assemble as per drawing and place in can.

SCHEMATIC DIAGRAM



(S) INDICATES START OF WINDING

STAMP TMC PART NO. $\frac{1}{8}$ HIGH BLACK GOTHIC



END LINK TO BLACK

START LINK TO YELLOW

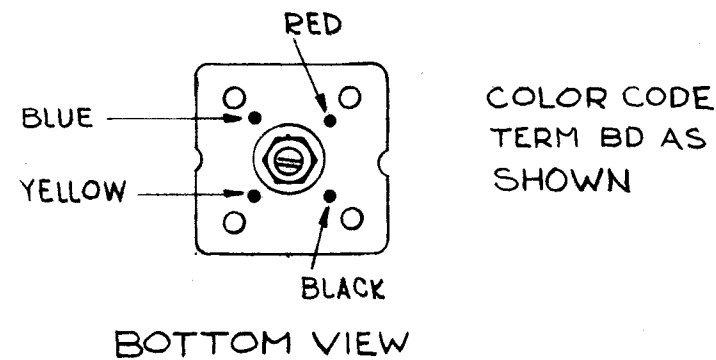
START TO BLUE
END TO RED

CORE END

WIRING DETAIL

1	15	NTH0348BN6	Nut, Hex
1	14	RC20GF333K	Resistor, Fixed, Composition
1	13	CM-111-D102M16	Capacitor, Fixed, Mica
X	12	BS-100	Solder, Soft
X	11	GL-102	Q-Dope
X	10	GL-103	Duco
2	9	NTH0832BN8	Nut, Hex
2	8	LWI-08MRN	Lockwasher, Internal
1	7	A-3029-1	Can Assembly
X	6	WI-107-19	Magnet Wire
X	5	WI-104-12438COS	Wire, Litz
2	4	SM-140-2	Bushing, Coil Mounting
1	3	PX-635-1	Term. Board, Transf. 4 Lugs
1	2	CI-116-6	Core, Tuning
1	1	CF-122-1.93	Coil Form .250 O.D.

REQ. ITEM	PART NO.	M. GELLMAN DESCRIPTION	SYMBOL
THE TECHNICAL MATERIEL CORP. MAMARONECK, NEW YORK			
TT-171 TRANSFORMER ASSY			
(TRANS IF TUNED)			
STOCK SIZE		MATERIAL	
TYPE & TEMPER		HEAT TREAT. SPEC.	
DRAWN		CHECKED	
FINISH & SPEC. NO.		ELEC. DES. APP. MECH. DES. APP.	



SYM	DESCRIPTION	DATE	CH. NO.	DRAFTS	CHECKER	ENG. APP.
A	ITEM 15 ADDED TO DWG	11-14-63	10412			

UNLESS OTHERWISE SPECIFIED:

DIMENSIONS ARE IN INCHES
TOLERANCES ON FRACTIONS $\pm 1/64$ DECIMALS $\pm .005$ ANGLES $\pm 1/20^\circ$

SCALE: $\frac{1}{4}$

MAXIMUM ALLOWABLE TOLERANCES HAVE BEEN DETERMINED AND ANY DEVIATIONS WILL BE CAUSE FOR REJECTION. REMOVE ALL BURRS AND SHARP EDGES

REQ. PER UNIT	MODEL	SECTION	ASSY. NO.	DATE
1	HNF-1			3-21-62
USED ON				

A-2348 A