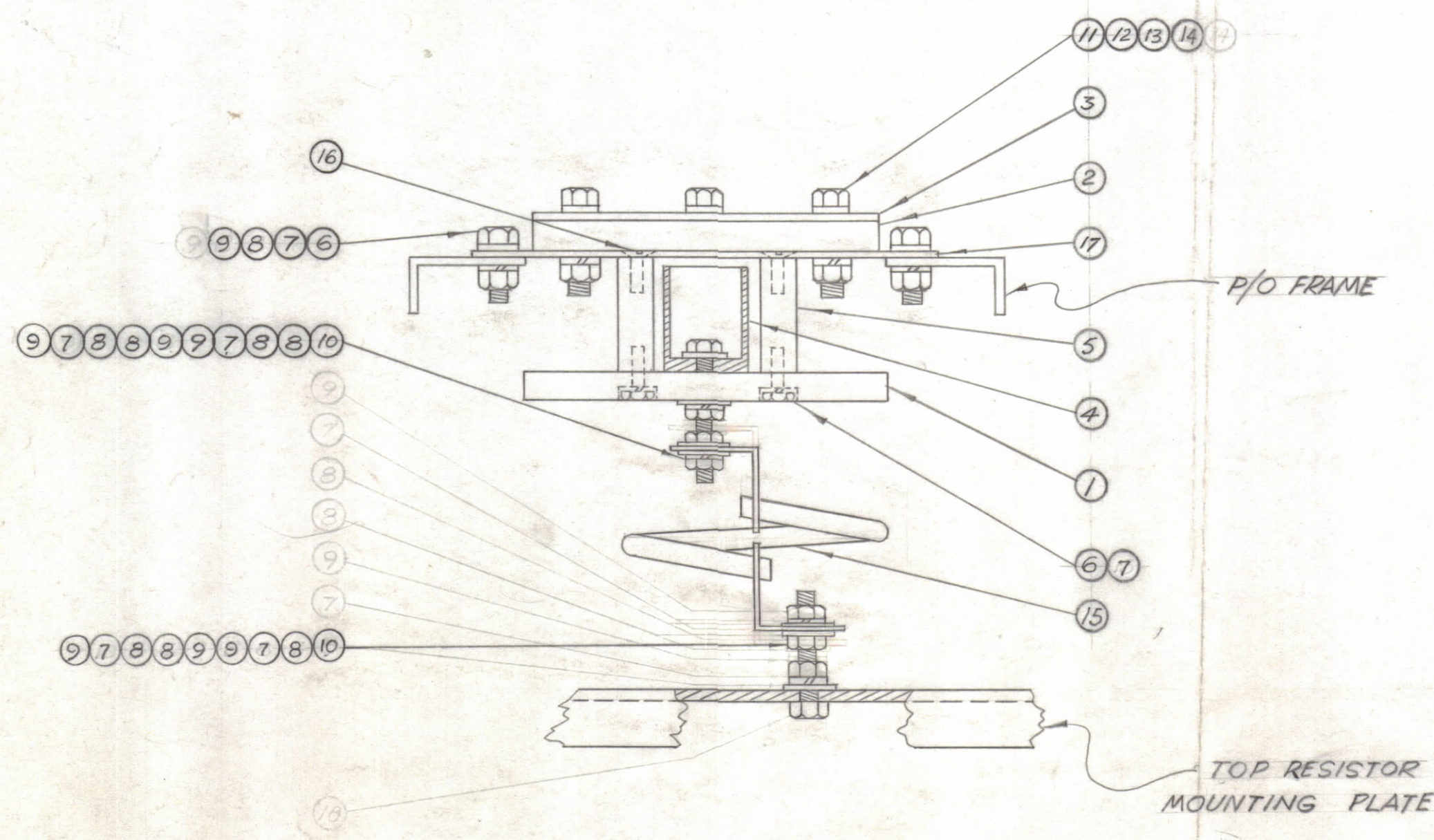
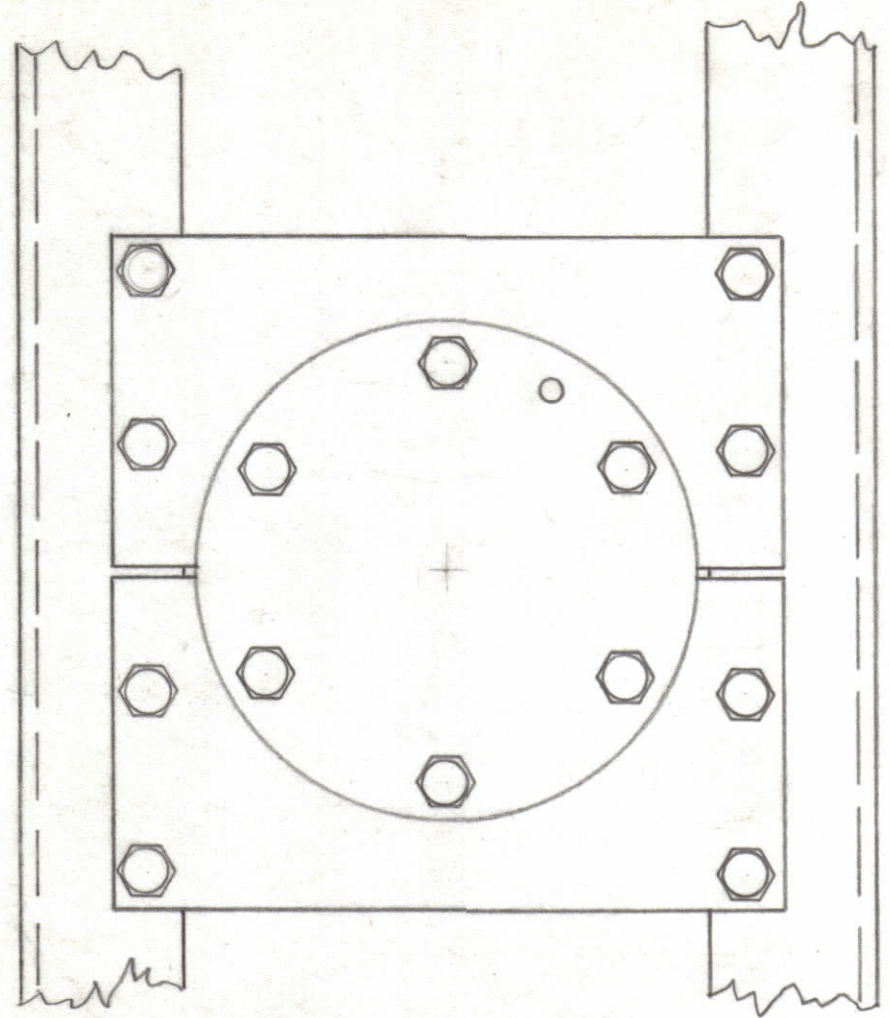


NOTICE TO PERSONS RECEIVING THIS DRAWING

THE TECHNICAL MATERIEL CORPORATION claims proprietary right in the material disclosed hereon. This drawing is issued in confidence for engineering information only and may not be reproduced or used to manufacture anything shown hereon without permission from THE TECHNICAL MATERIEL CORPORATION to the user. This drawing is loaned for mutual assistance and is subject to recall at any time.

Property of:
THE TECHNICAL MATERIEL CORPORATION
MAMARONECK, NEW YORK



1	18	SCHH2520BN14	BOLT, MACHINE
2	17	MS-2170	PLATE MOUNTING, FLANGE
4	16	SCFP2520BN12	SCREW, FLAT HEAD (PHILIP)
1	15	CL-285	COIL RF
6	14	NTH3118BN16	NUT, HEX.
6	13	LWS31MRN	LOCKWASHER SPLIT
6	12	FW31HBN	WASHER, FLAT
6	11	SCHH3118BN24	BOLT, MACHINE
2	10	SCHH2520BN24	BOLT, MACHINE
14	9	NTH2520BN14	NUT HEX.
15	8	FW25HBN	WASHER, FLAT
16	7	LWS25MRN	LOCKWASHER SPLIT
12	6	SCHH2520BN10	BOLT, MACHINE
4	5	TE2520GR24R	SPACER, THREADED
1	4	PM-727-2	CONTACT CUP TYPE 3-1/8 (70Ω)
1	3	MS-2360	PLATE, FLANGE
1	2	PO-223	FLANGE 3-1/8 EIA.
1	1	PX-630	PLATE, CONTACT CUP MOUNTING

REQ. ITEM	PART NO.	DESCRIPTION	SYMBOL
THE TECHNICAL MATERIEL CORP. MAMARONECK, NEW YORK			
STOCK SIZE			
FLANGE, ASSY 3-1/8 EIA 70 OHM			
MATERIAL			
DRAWN		CHECKED	
Ken Ruzzo		JPM	
TYPE & TEMPER		HEAT TREAT. SPEC.	
2-5-62			
FINISH & SPEC. NO.			
ELEC. DES. APP.		MECH. DES. APP.	
DB		AA	
SHEET		OF	
A-2344		A	

A	ITEM NUMBERS ON PICTORIAL CLARIFIED	5-10-62	6680	GDL	JH	BO	
83-C3	QUAN. ITEMS (7), (8), (12), (13) WERE 12, 23, 12, 10						
SYM	ZONE	DESCRIPTION	DATE	CH. NO.	DRAFTS	CHECKER	ENG. APP.
		UNLESS OTHERWISE SPECIFIED:	SCALE Do Not Scale				
DIMENSIONS ARE IN INCHES			MAXIMUM ALLOWABLE TOLERANCES HAVE BEEN DETERMINED AND ANY DEVIATIONS WILL BE CAUSE FOR REJECTION. REMOVE ALL BURRS & SHARP EDGES				
TOLERANCES ON							
FRACTIONS ± 1/64 DECIMALS ± .005 ANGLES ± 1/2°							

1	TER-25K-A7D			2-5-62
REQ. PER UNIT	MODEL	SECTION	ASS'Y. NO.	DATE
USED ON				