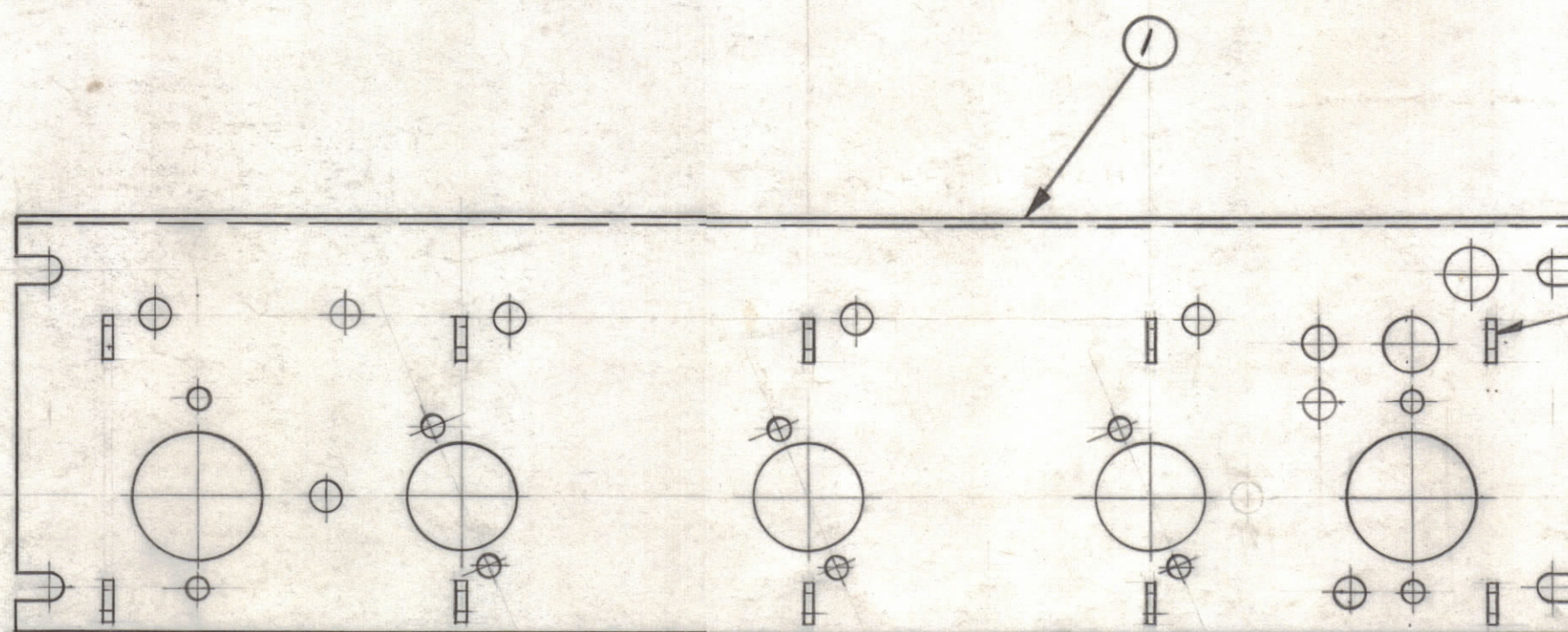
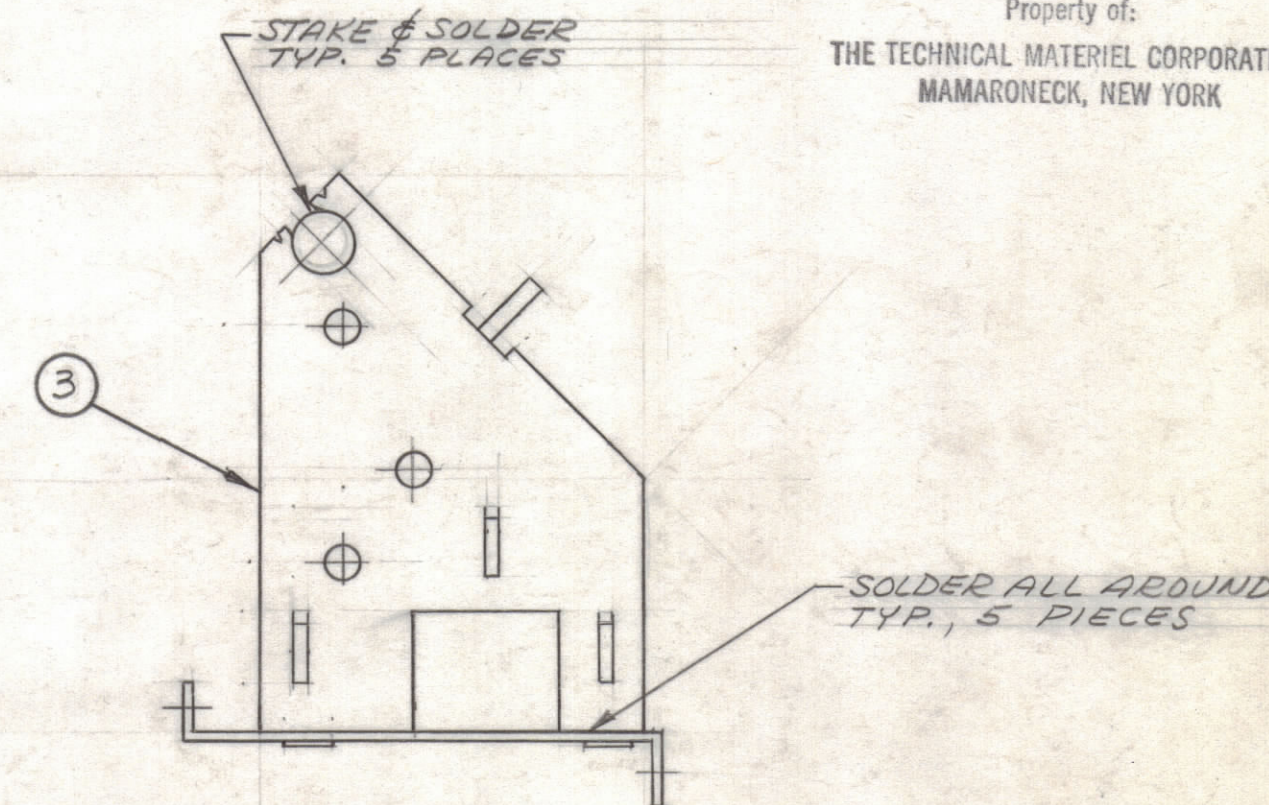
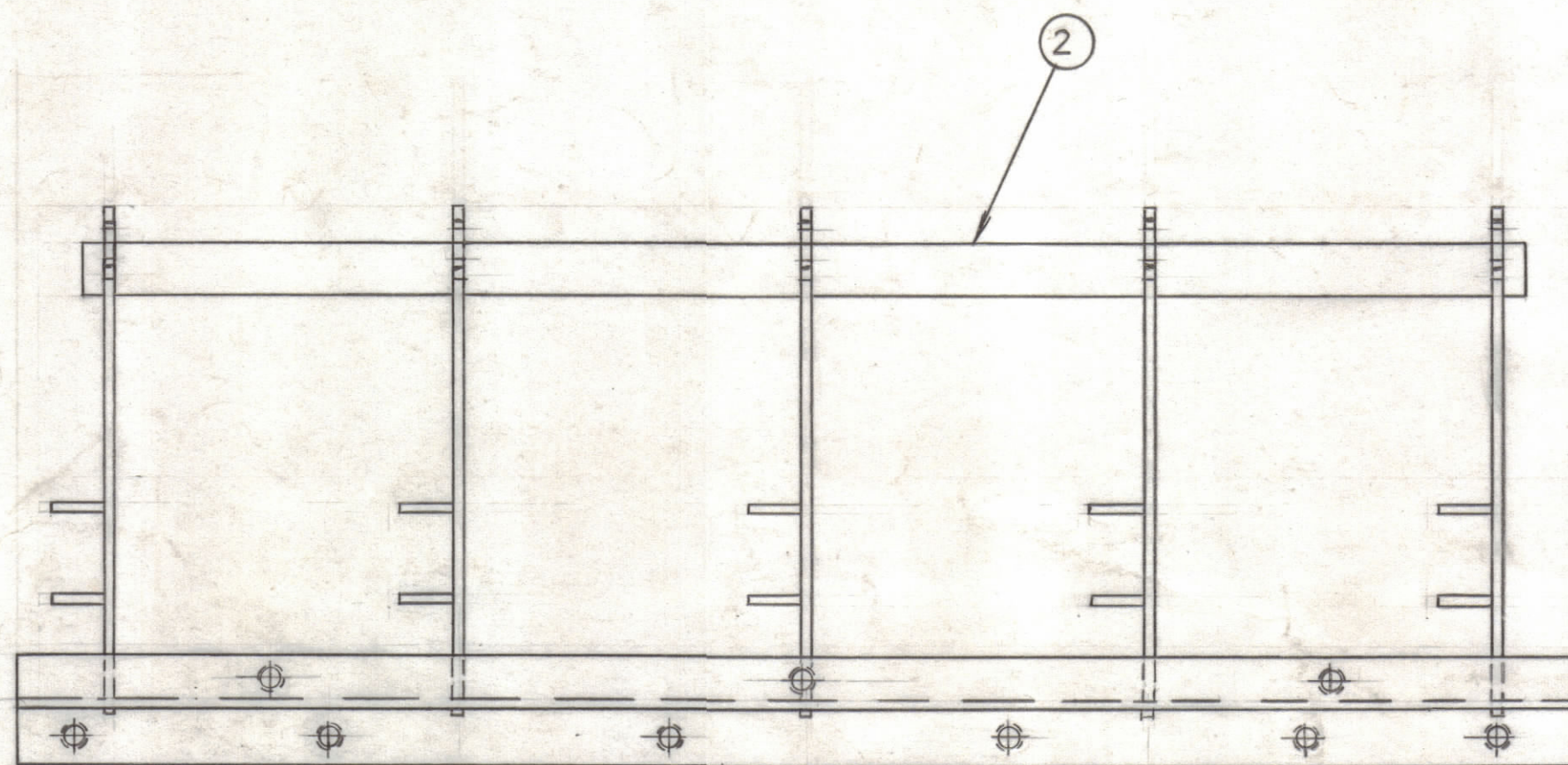


NOTICE TO PERSONS RECEIVING THIS DRAWING

THE TECHNICAL MATERIEL CORPORATION claims proprietary right in the material disclosed hereon. This drawing is issued in confidence for engineering information only and may not be reproduced or used to manufacture anything shown hereon without permission from THE TECHNICAL MATERIEL CORPORATION to the user. This drawing is loaned for mutual assistance and is subject to recall at any time.

Property of:

THE TECHNICAL MATERIEL CORPORATION  
MAMARONECK, NEW YORK



STAKE & SOLDER  
TYP. 10 PLACES

NOTES -  
1- STAKE & SOLDER AS SHOWN  
2- SILVER PLATE (S345)  
3- WATER TIGHT COVER DIPPED

REF: LD-1112

X	4	BS100	SOLDER, TIN ALLOY.
5	3	MS 2893	CHASSIS, ELEC. EQUIP. BAFFLE, RF
1	2	PM 748	SPACER TIE ROD
1	1	LD1112/MS2891	CHASSIS ELEC. EQUIP. MAIN, RF
REQ. ITEM	PART NO.		J. ANGER DESCRIPTION SYMBOL
THE TECHNICAL MATERIEL CORP. MAMARONECK, NEW YORK			
CHASSIS, RF, ASSEMBLY			
MATERIAL			
DRAWN		ab	HC
CHECKED			BP
TYPE & TEMPER		HEAT TREAT. SPEC.	
SEE NOTE 2		J. ANGER	
FINISH & SPEC. NO.		ELEC. DES. APP. MECH. DES. APP.	
		A 2340 C	

C		DELE. LD1112 REF. IT.1 WAS MS2891	3-1-67	17852	RME		
B	B2	ITEM (4) ADDED	8-6-64	12046	J.B.		
A	D4, B6	ITEM (1) HOLE ADDED; FINISH & SPEC. NOTE CLARIFIED	6-13-62		J.A.		
SYM	ZONE	DESCRIPTION	DATE	CH. NO.	DRAFTS	CHECKER	ENG. APP.
UNLESS OTHERWISE SPECIFIED:			SCALE				
DIMENSIONS ARE IN INCHES			MAXIMUM ALLOWABLE TOLERANCES HAVE BEEN DETERMINED AND ANY DEVIATIONS WILL BE CAUSE FOR REJECTION. REMOVE ALL BURRS & SHARP EDGES				
TOLERANCES ON FRACTIONS ± 1/64			DECIMALS ± .005		ANGLES ± 1/2°		

1	HFR-1/T	A 2522	1-19-62
REQ. PER UNIT	MODEL	SECTION	ASS'Y. NO. DATE
USED ON			