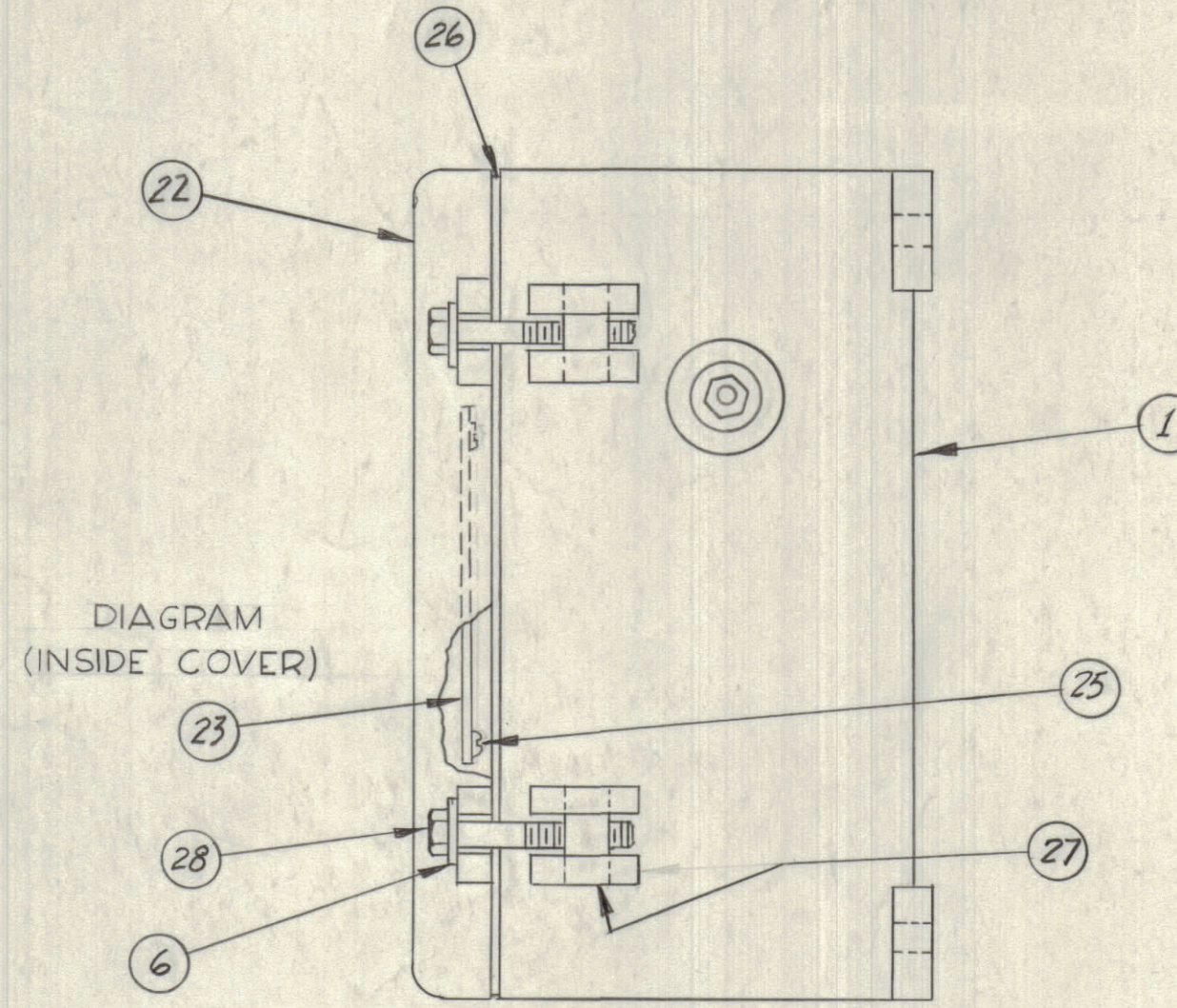
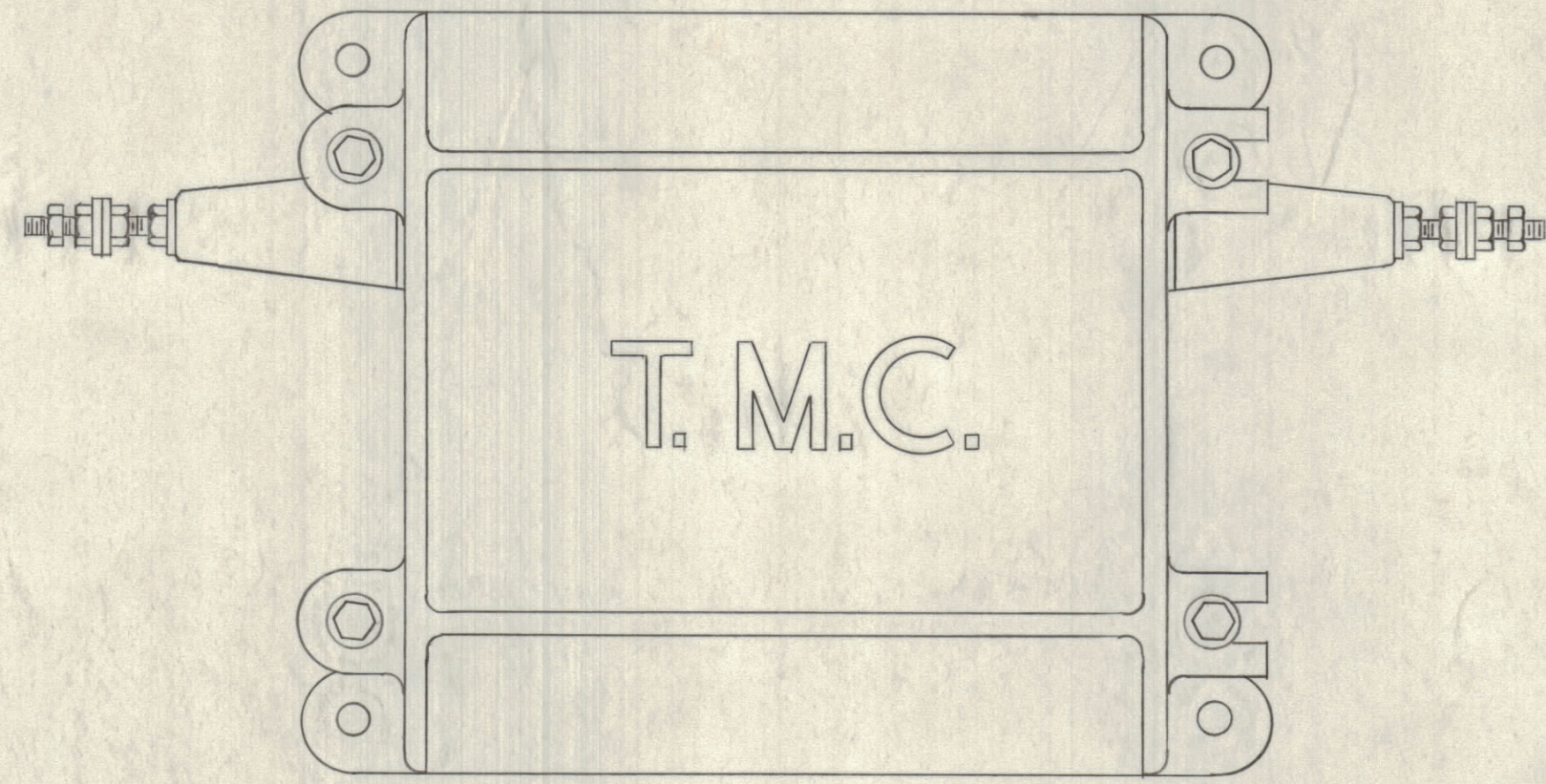


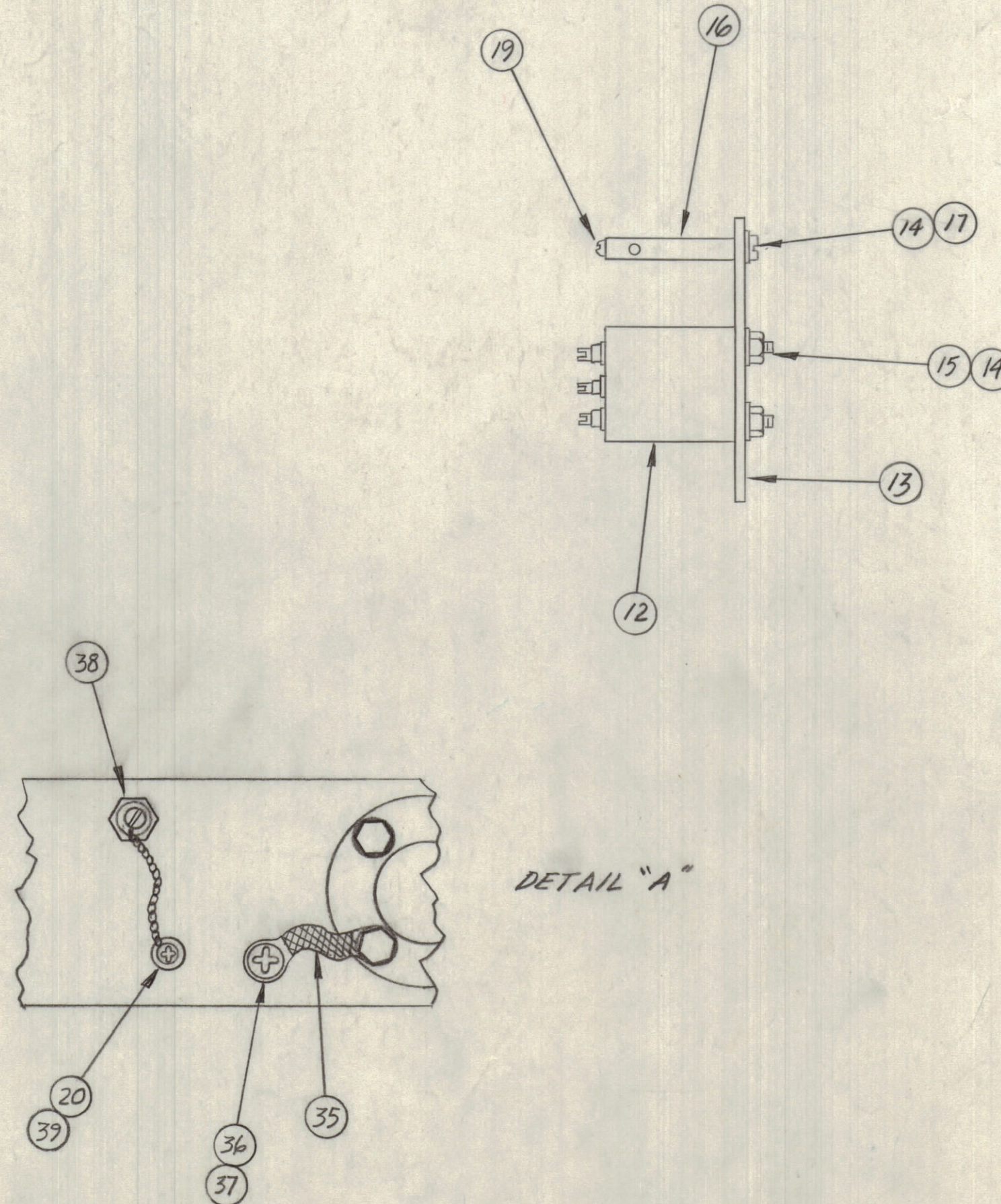
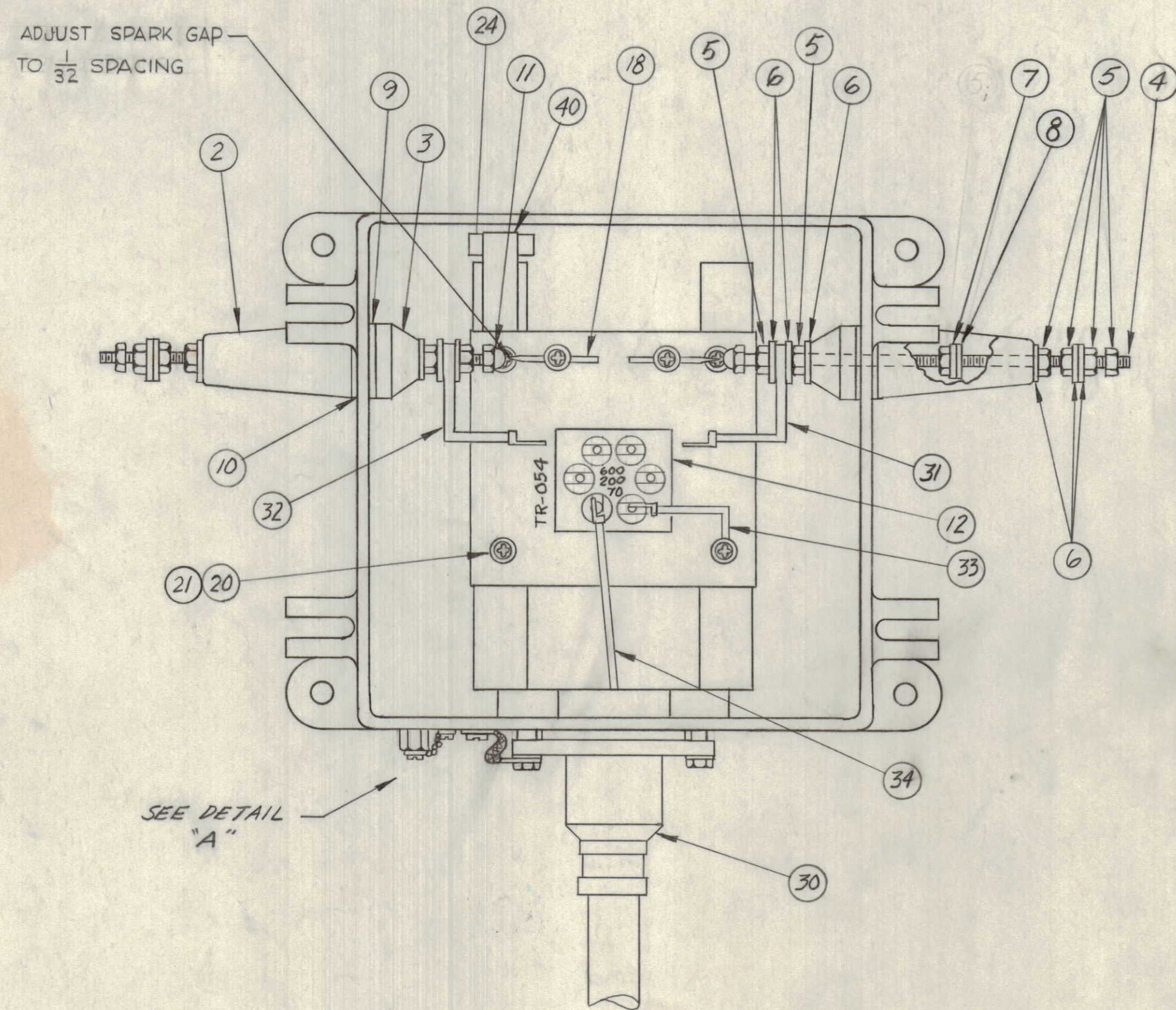
NOTICE TO PERSONS RECEIVING THIS DRAWING

THE TECHNICAL MATERIEL CORPORATION claims proprietary right in the material disclosed herein. This drawing is issued in confidence for engineering information only and may not be re-reduced or used to manufacture anything shown hereon without permission from THE TECHNICAL MATERIEL CORPORATION to the user. This drawing is loaned for mutual assistance and is subject to recall at any time.

Property of:
THE TECHNICAL MATERIEL CORPORATION
MAMARONECK, NEW YORK



NOTE:
CEMENT ITEM (26) TO ITEM (22)
WITH ITEM (29).



REQ. ITEM	PART NO.	DESCRIPTION	SYMBOL
1	40	MS-933	HOLDER, DESSICANT
1	39	SCBP0832BN4	SCREW, MACHINE
1	38	A-1291	DRAIN PLUG ASS'Y
1	37	SCBP1032BN4	SCREW, MACHINE
1	36	LWS10MRN	LOCKWASHER, SPLIT
1	35	A-1164	GROUND STRAP, CASE
1	34	A-876	CONNECTOR ASSY., COAX.
1	33	FP-132	CONNECTOR ASSY., GROUND
1	32	A-849	CONNECTOR INST., LEFT
1	31	A-848	CONNECTOR INST., RIGHT
1	30	ESW 787	CONNECTOR BOX
X	29	6L-101-1	CEMENT, PLIOBOND
4	28	SC-108-9	BOLT, HEX.
4	27	PM-100	PIN, COVER BOLT
1	26	GA-103	GASKET, COVER
4	25	SC-102-1	SCREW, THREAD CUTTING
2	24	AD-100-1/8	DESSICANT
1	23	LD-915	SCHEMATIC DIAGRAM
1	22	PM-105	COVER
4	21	SCBP0832BN6	SCREW, MACHINE
4	20	LWE08MRN	LOCKWASHER, EXTERNAL
2	19	SCR0632SN6	SCREW, MACHINE
2	18	PM-103	SPARK ROD
2	17	SCBP0632BN6	SCREW MACHINE
2	16	PM-102	POST
4	15	NTH0632BN8	NUT, HEX.
6	14	LWE06MRN	LOCKWASHER, EXTERNAL
1	13	MS-100	MOUNTING PLATE
1	12	TR-054	TRANSFORMER
2	11	NTC2520BNL	NUT, CAP
2	10	GA-100	GASKET
2	9	GA-101	GASKET
2	8	GA-104	GASKET
2	7	FW25LBN	WASHER, FLAT
16	6	FW25H55	WASHER, FLAT
12	5	NTH2520SS14	NUT, HEX.
2	4	A-100	STUD, SUB-ASSY
2	3	NS-101	INSULATOR, INSIDE
2	2	NS-100	INSULATOR, OUTSIDE
1	1	PM-106	CASE

SYM	ZONE	DESCRIPTION	DATE	CH. NO.	DRAFTS	CHECKER	ENG. APP.
B	CB	ON TR-054 SLOTS CLARIFIED	11-31-62	7756			
A	C2	ITEM (23) WAS LD-104B	10-8-62	7307			

UNLESS OTHERWISE SPECIFIED:
DIMENSIONS ARE IN INCHES
TOLERANCES ON FRACTIONS ± 1/64 DECIMALS ± .005 ANGLES ± 1/2°

SCALE: A
MAXIMUM ALLOWABLE TOLERANCES HAVE BEEN DETERMINED AND ANY DEVIATIONS WILL BE CAUSE FOR REJECTION. REMOVE ALL BURRS & SHARP EDGES

REQ. PER UNIT	MODEL	SECTION	ASSY. NO.	DATE	TYPE & TEMPER	HEAT TREAT. SPEC.	FINISH & SPEC. NO.	ELEC. DES. APP.	MECH. DES. APP.	SHEET OF
	RAC-20			1-12-62						11

THE TECHNICAL MATERIEL CORP.
MAMARONECK, NEW YORK
MAIN ASSEMBLY
MODEL RAC-20
DRAWN: WA
CHECKED: JHO
FINAL APPROVAL: JPM
A-2307