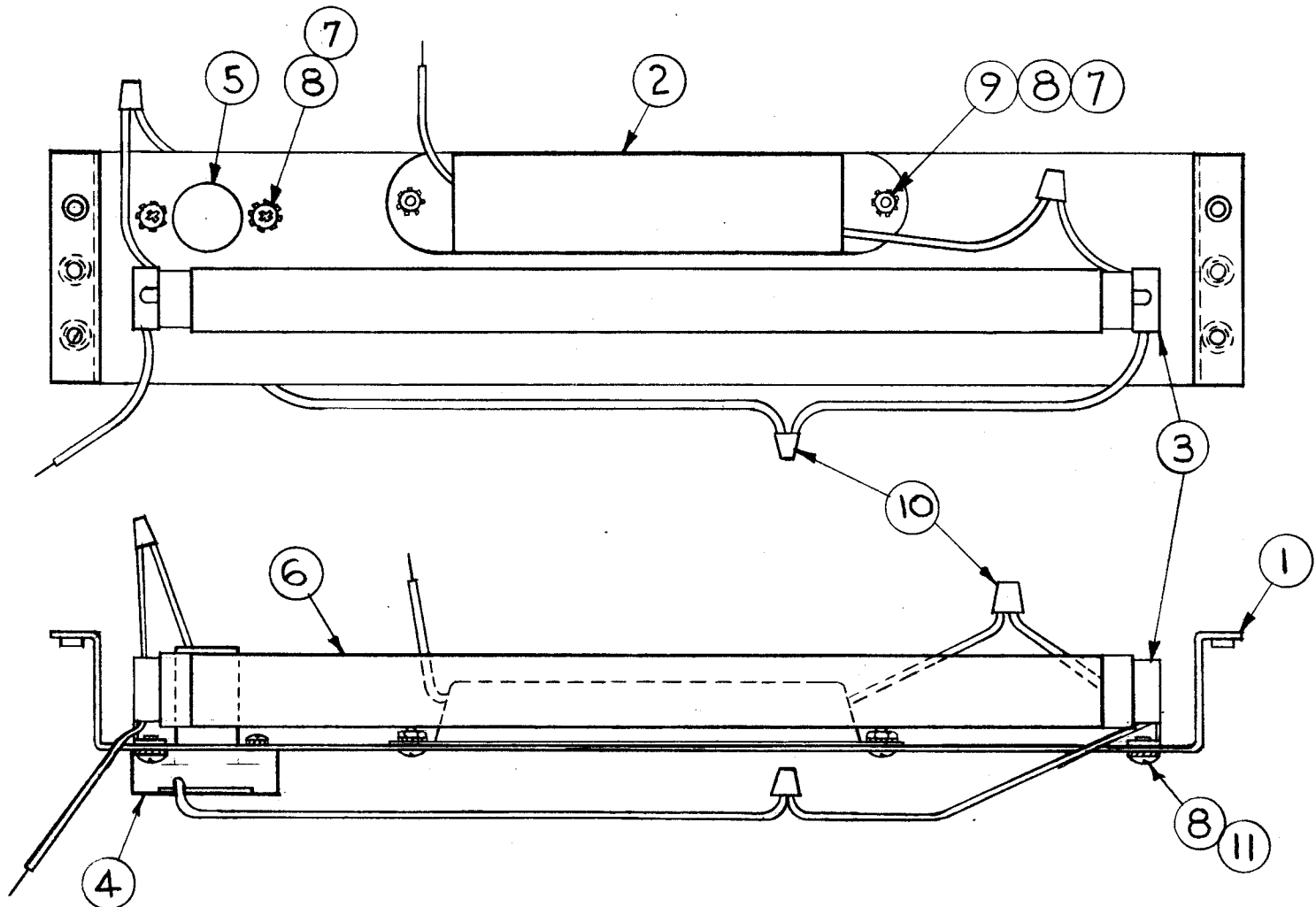


TMC PART NO.	ITEM 1 PART. NO.	LOCATION	USED ON MODEL	USED ON SECTION	QUAN.
A-2275-1	LD-688/MS-1553	LEFT	GPT-40K	AM-115	1
A-2275-2	LD-689/MS-1553	RIGHT	GPT-40K	AM-115	1
A-2275-3	LD-724/MS-1553	LEFT	GPT-40K	AT-103	1
A-2275-4	LD-725/MS-1553	RIGHT	GPT-40K	AT-103	1
A-2275-5	LD-539/MS-1553	RIGHT	GPT-10K	AX-173	1
A-2275-6	LD-545/MS-1553	LEFT	GPT-10K	AX-173	1
A-2275-7	LD-1289/MS-1553	LEFT	GPT-200K	AM-119	1
A-2275-8	LD-1290/MS-1553	RIGHT	GPT-200K	AM-119	1
A-2275-9	LD-1291/MS-1553	LEFT	GPT-200K	AM-120	1
A-2275-10	LD-1292/MS-1553	RIGHT	GPT-200K	AM-120	1
A-2275-11	LD-1293/MS-1553	LEFT	GPT-200K	AM-118	1
A-2275-12	LD-1295/MS-1553	RIGHT	GPT-200K	AM-118	1
A-2275-13	LD-1294/MS-1553	CENTER	GPT-200K	AM-118	1

A-2275 0

REVISIONS					
SYM	DESCRIPTION	DATE	E.M.N. NO.	DRAFT	CHKD APPD
0	ORIGINAL RELEASE FOR PRODUCTION	3-3-64		AM	



REQ'D.	ITEM	PART NUMBER	DESCRIPTION	SYMBOL
2	11	SCBP0632BN4	SCREW, MACH	
3	10	NT-121-71B	NUT, WIRE	
2	9	NTH0632BN8	NUT, HEX	
6	8	LWE06MRN	WASHER, LOCK, EXT	
2	7	SCBP0632BN5	SCREW, MACH	
1	6	BI-107	LAMP, FL	
1	5	PO-170	STARTER, FL LAMP	
1	4	TS-140	SOCKET, LAMP STARTER	
2	3	TS-141	SOCKET, FL LAMP	
1	2	PO-169	BALLAST, FL LAMP	
1	1	SEE CHART	CHASSIS, METER LIGHT	

BUDETTI		LIST OF MATERIAL			
MATERIAL		THE TECHNICAL MATERIEL CORP. MAMARONECK, NEW YORK			
FINISH		TITLE CHASSIS ASSEMBLY, METER LIGHT			
UNLESS OTHERWISE SPECIFIED DIMENSIONS ARE IN INCHES AND INCLUDE CHEMICALLY APPLIED OR PLATED FINISHES		DRAWN <i>G. S. ...</i>	DATE 3/26/64	FINAL APPROVAL <i>[Signature]</i>	DATE 3/27/64
DECIMALS .X ± .05 .XX ± .01 .XXX ± .005		CHECKED <i>[Signature]</i>	DATE 2/28/64	A-2275 0	
FRACTIONS ± 1/64 ANGLES ± 0° 30'		ELECT. DES. <i>[Signature]</i>	DATE 3/3/64	SHEET	
TOLERANCES		MECH. DES. <i>[Signature]</i>	DATE 3-3-64	REV. LTR.	

SEE CHART	SEE CHART	
Q'TY./UNIT	MODEL USED ON	ASS'Y. NO.
SCALE	CODE A	
THE CONTENTS OF THIS DRAWING ARE THE EXCLUSIVE PROPERTY OF THE TECHNICAL MATERIEL CORP. ITS UNAUTHORIZED USE OR REPRODUCTION IN WHOLE OR IN PART IS STRICTLY FORBIDDEN.		

NOTES