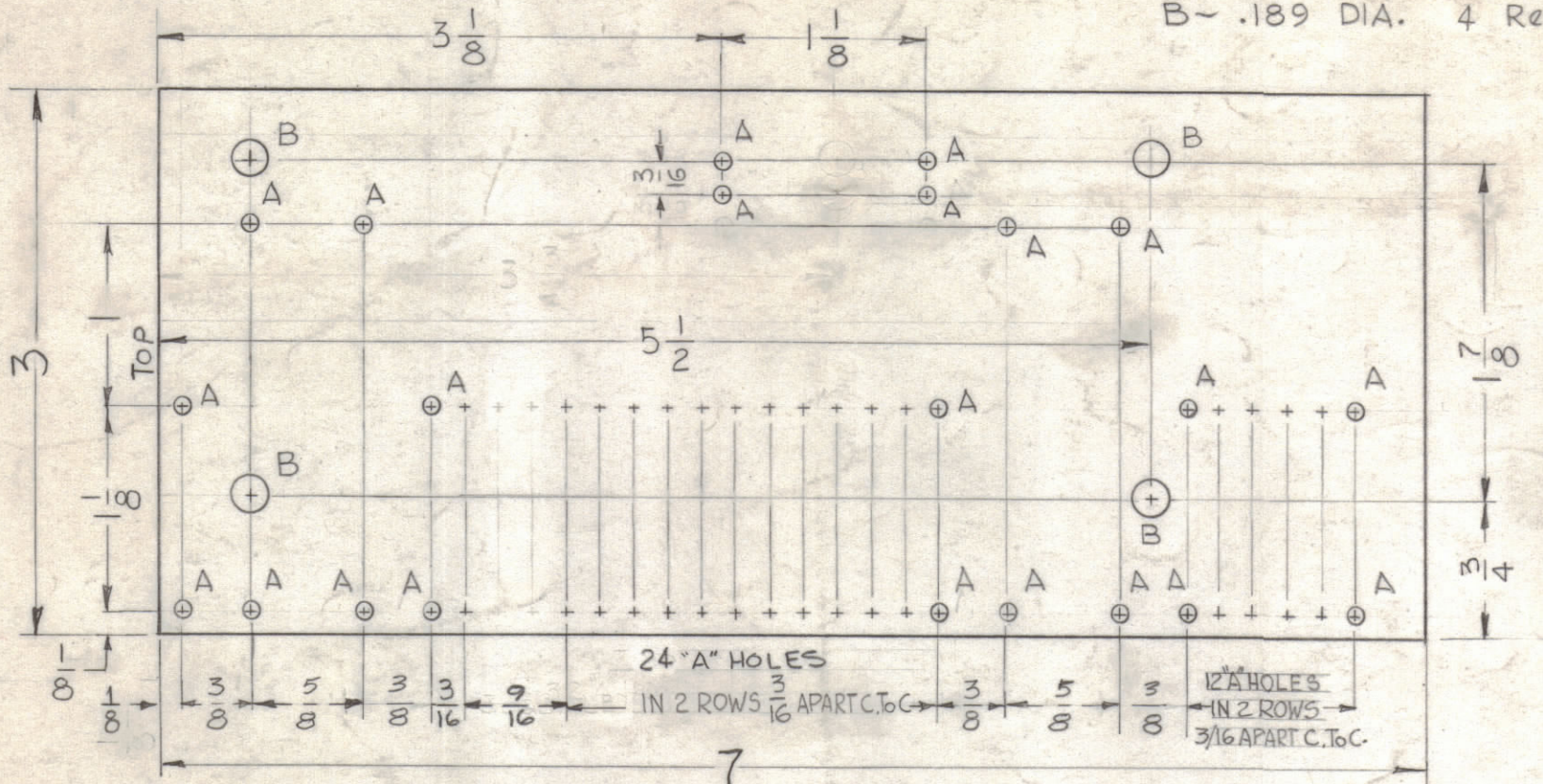


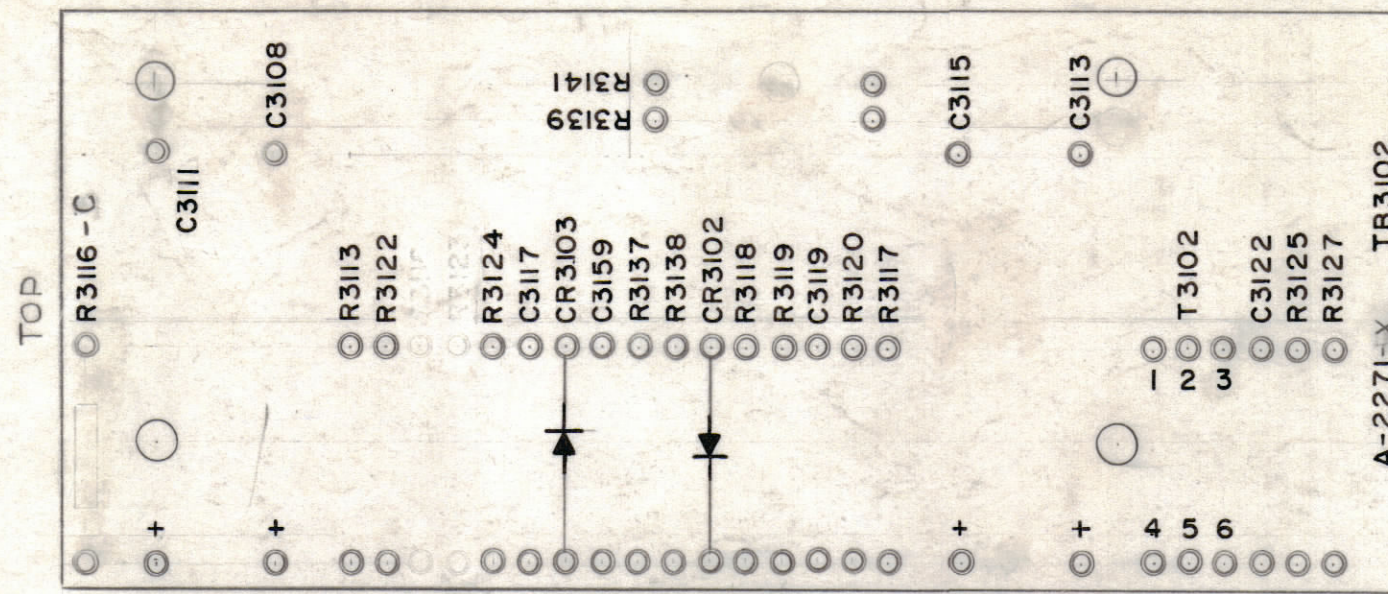
HOLES -
A - .078 DIA. 54 Req.
B - .189 DIA. 4 Req

LETTERING TO BE 3/32 HIGH BLACK GOTHIC

INSERT LATEST REVISION LETTER

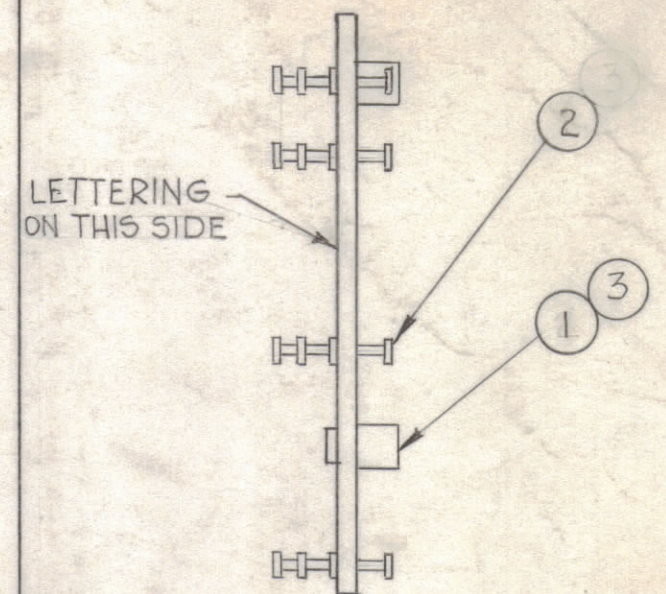


STAGE-1 MACHINING (A-2271-1)
MATERIAL 3/32, XXXP, PHENOLIC, FINISH NATURAL.



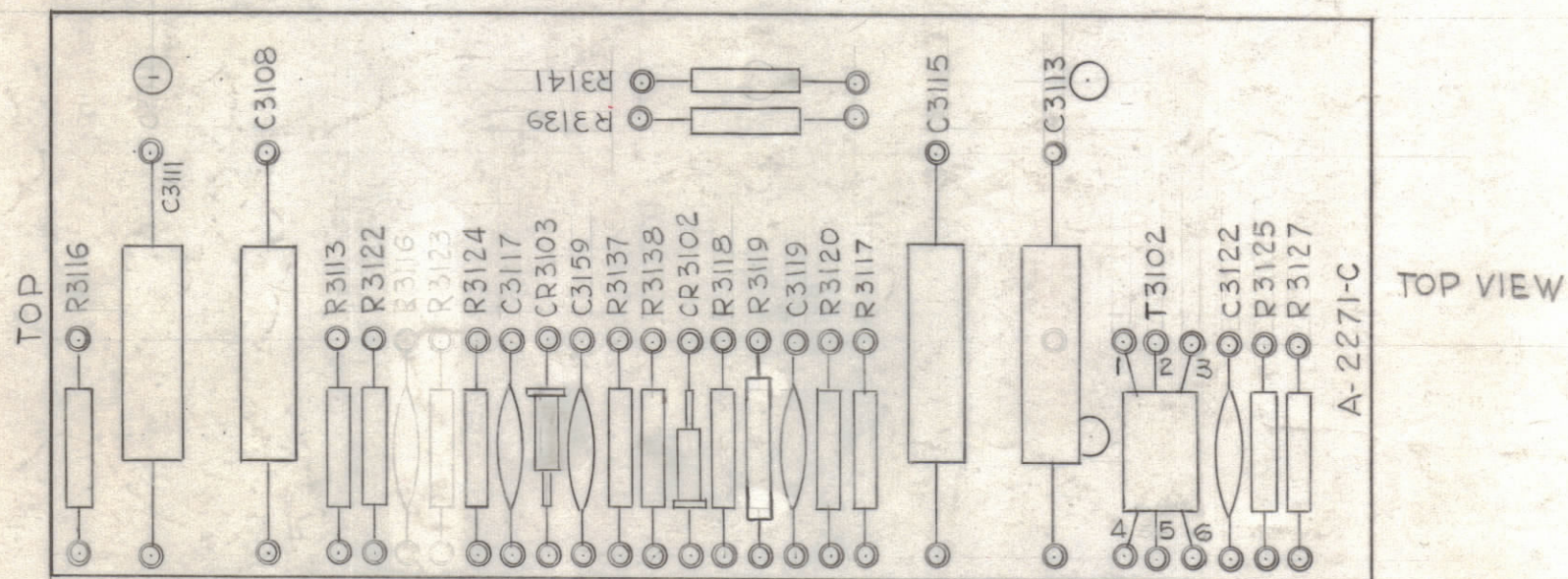
3/32 HIGH BLACK LUSTERLESS, GOTHIC LETTERING
MARKING PROCESS: AS PER TMC SPECIFICATION S-727

STAGE-2 STAMPING (A-2271-2)

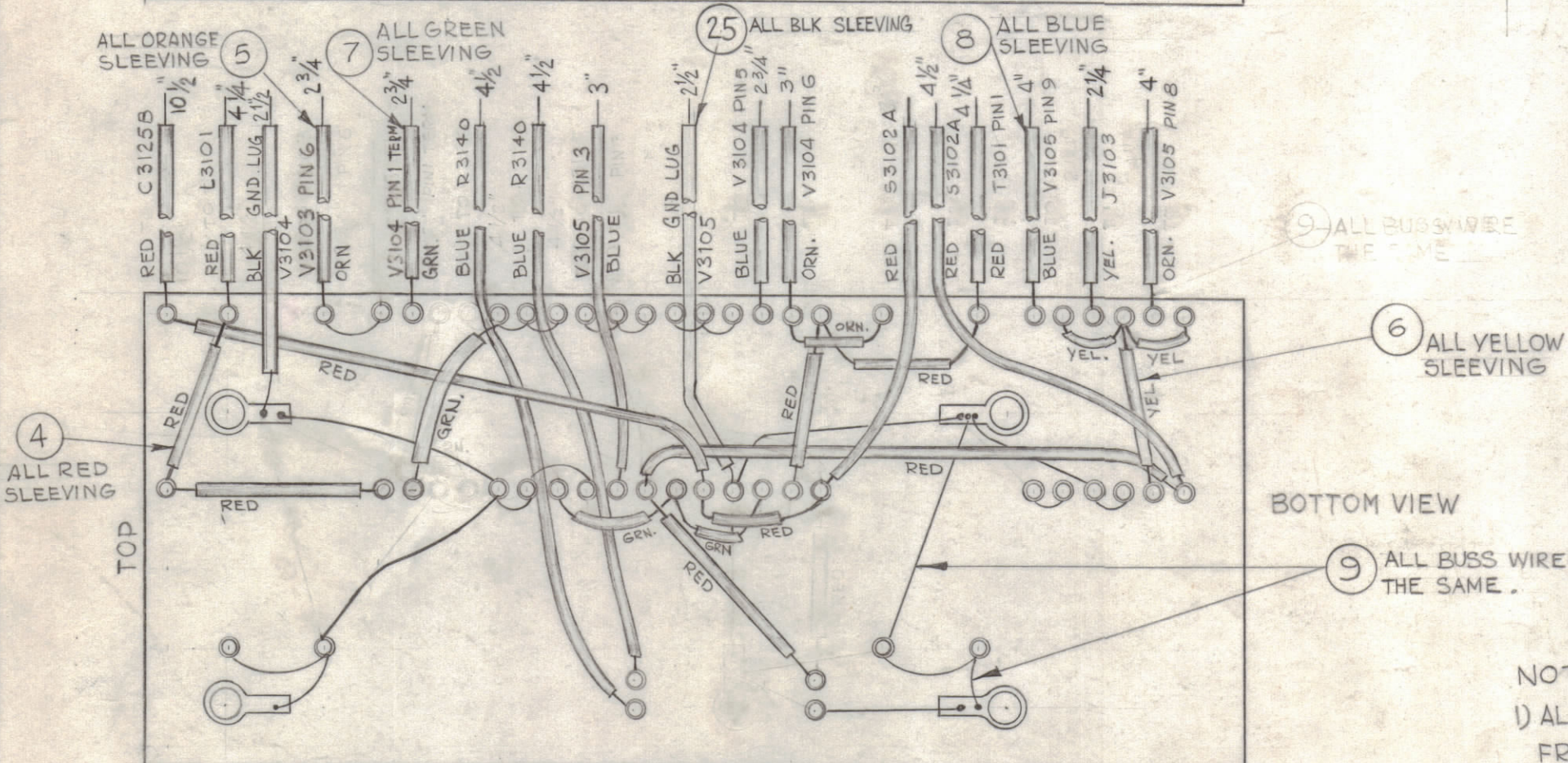


STAGE-3 SUB-ASSY (A-2271-3)

A2271-5
CHANGE ITEM 26 TO
RC 20GF153J
USED ON HFS-2



TOP VIEW



BOTTOM VIEW

NOTE -
1) ALL WIRE LENGTHS ARE MEASURED FROM TERMINAL
2) ALL SLEEVING TO BE 1/2" SHORTER THAN BUSS WIRE

1	26	RC20GF472K	RESISTOR, FIXED COMPOSITION 4.7K	R3119
5	25	MWC 22(7)U0	CABLE, INSULATION	BLACK
X	24	BS-100	SOLDER, SOFT	
1	23	TF-228 K15	TRANSFORMER, PULSE	T3102
1	22	RC20GF392J	RESISTOR, FIXED COMPOSITION 3.9K	R3138
1	21	RC20GF273J	RESISTOR, FIXED COMPOSITION 27K	R3141
2	20	RC20GF222J	RESISTOR, FIXED COMPOSITION 2.2K	R3127 R3139
1	19	RC20GF682J	RESISTOR, FIXED COMPOSITION 6.8K	R3137
-	18		DELETED	
1	17	RC20GF104J	RESISTOR, FIXED COMPOSITION 100K	R3124
3	16	RC20GF223J	RESISTOR, FIXED COMPOSITION 22K	
2	15	RC20GF332J	RESISTOR, FIXED COMPOSITION 3.3K	
2	14	RC20GF104J	RESISTOR, FIXED COMPOSITION 100K	R3118 R3122
4	13	CE-116-1VN	CAPACITOR, ELECTROLYTIC	
1	12	CN-114-R10-4M	CAPACITOR, FIXED, MYLAR	C3117
3	11	CC-100-24	CAPACITOR, FIXED, CERAMIC, DISK	
2	10	IN 463	SILICON, SILICON	CR3102 CR3103
8	9	WL-100-7	WIRE, BUSS	
16 1/4	8	MWC 22(7)U6	WIRE, ELECTRICAL	BLUE
5 1/4	7	MWC 22(7)U5	WIRE, ELECTRICAL	GREEN
3 3/4	6	MWC 22(7)U4	WIRE, ELECTRICAL	YELLOW
6 3/4	5	MWC 22(7)U3	WIRE, ELECTRICAL	ORANGE
35 1/2	4	MWC 22(7)U2	WIRE, ELECTRICAL	RED
4	3	TE-116-3	SOLDER, LUG	
54	2	TE-168-4C	TERMINAL, MINIATURE	
4	1	TE-108-13BN	STANDOFF, RIVET TYPE	

REQ.	ITEM	PART NO.	STRUMMER DESCRIPTION	SYMBOL
THE TECHNICAL MATERIEL CORP. MAMARONECK, NEW YORK				
STOCK SIZE				
TERMINAL BOARD ASS'Y AMPLIFIER 3100 DECK				
MATERIAL				
G.D.L. [Signature]				
DRAWN		CHECKED		FINAL APPROVAL
[Signature]		[Signature]		A-2271
TYPE & TEMPER		HEAT TREAT. SPEC.		F
FINISH & SPEC. NO.		ELEC. DES. APP.		MECH. DES. APP.
		SHEET		OF

F	A-2271-X WAS A-2271-A & NOTE ADD.	11-16-62	18063	144	[Signature]
E	ADDED A2271-5	6/2/66	16240	CH	[Signature]
D	DWG UPDATED & CLARIFIED	10-28-63	10247	[Signature]	[Signature]
C	CR ITEM (15) QTY WAS 2, ADDED R3119	5-3-63	8935	[Signature]	[Signature]
B	D2 ITEM (18) WAS RC20GF153K SYM R3119	11-16-62	7599	[Signature]	[Signature]
A	H5, G4 (4) "A" HOLES DELETED; SYMS C3116 & R3123 DELETED				

SYM	ZONE	DESCRIPTION	DATE	CH. NO.	DRAFTS	CHECKER	ENG. APP.
UNLESS OTHERWISE SPECIFIED: SCALE DO NOT SCALE							
DIMENSIONS ARE IN INCHES							
TOLERANCES ON FRACTIONS ± 1/64 DECIMALS ± .005 ANGLES ± 1/2°							
MAXIMUM ALLOWABLE TOLERANCES HAVE BEEN DETERMINED AND ANY DEVIATIONS WILL BE CAUSE FOR REJECTION. REMOVE ALL BURRS & SHARP EDGES							

1	HFS-1	3100	3-5-62
REQ. PER UNIT	MODEL	SECTION	ASS'Y. NO.
			DATE
			USED ON