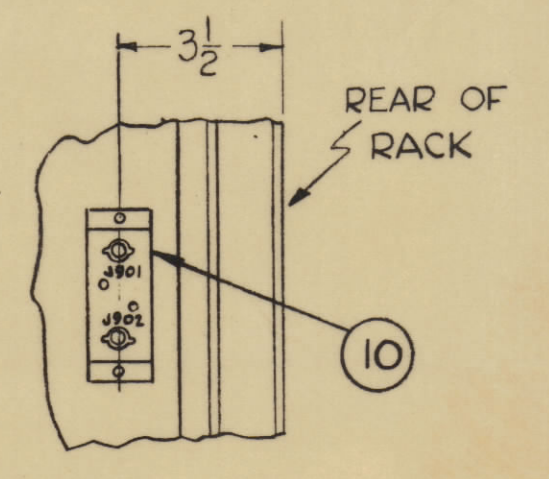
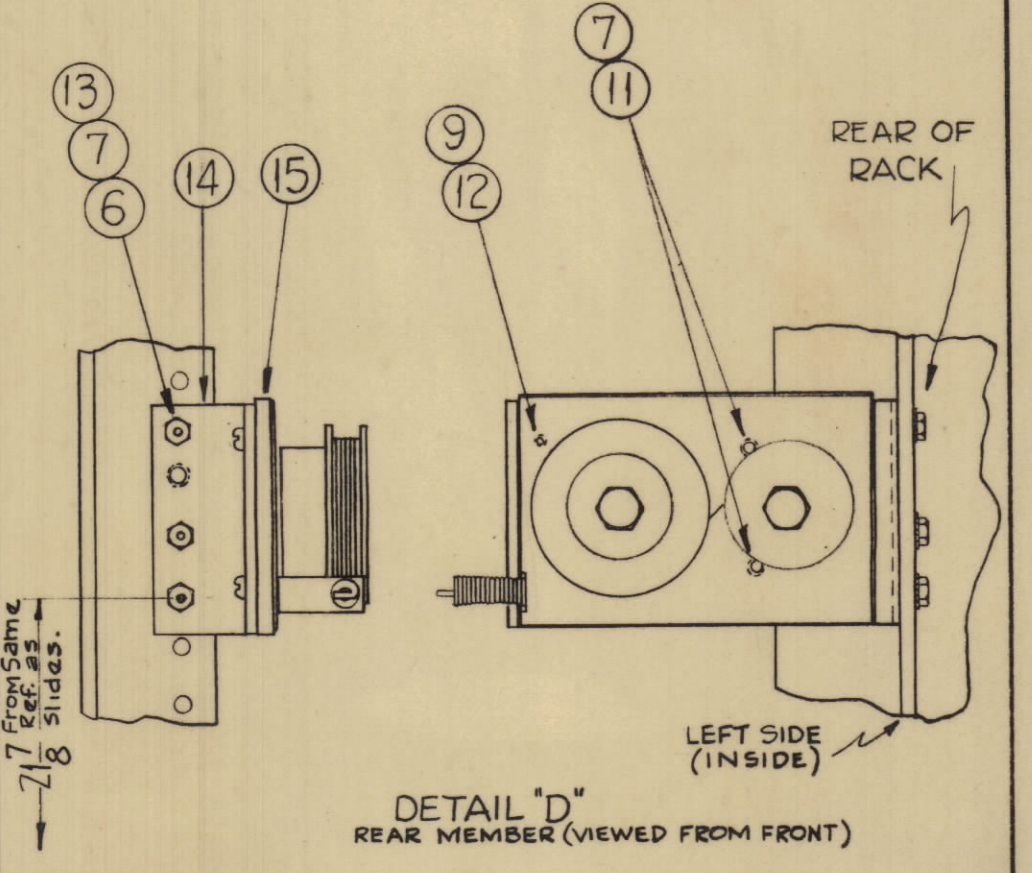
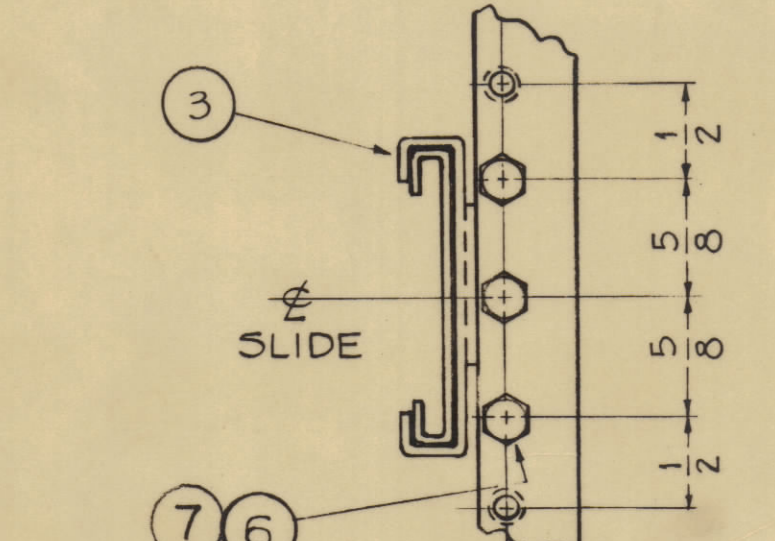
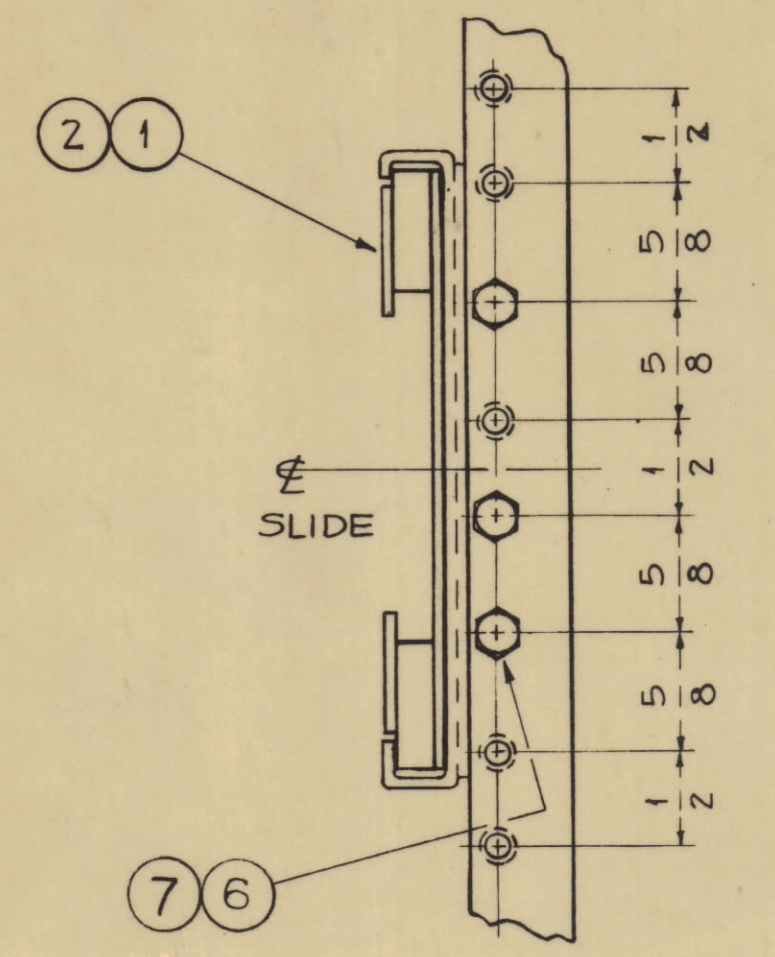
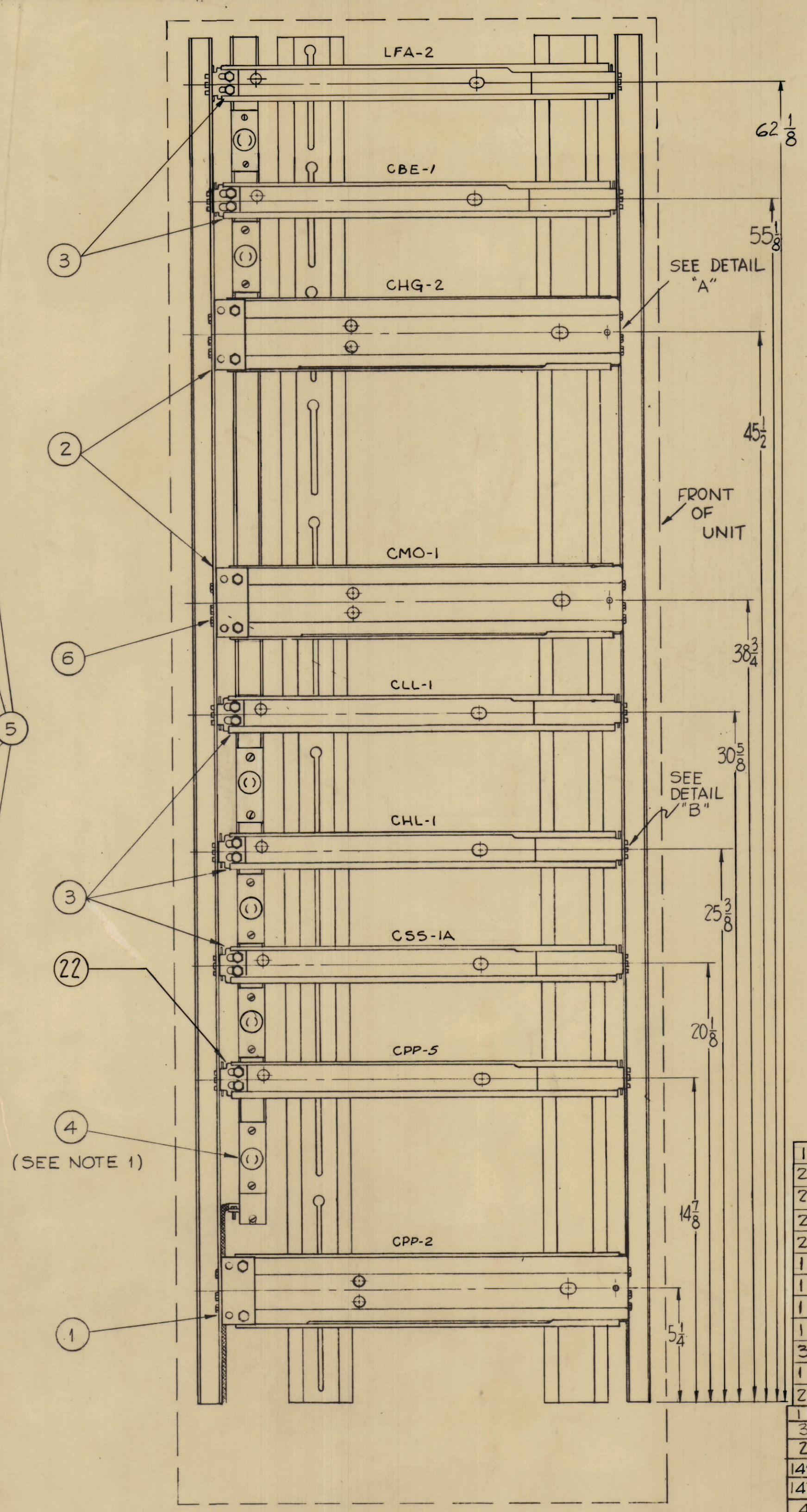
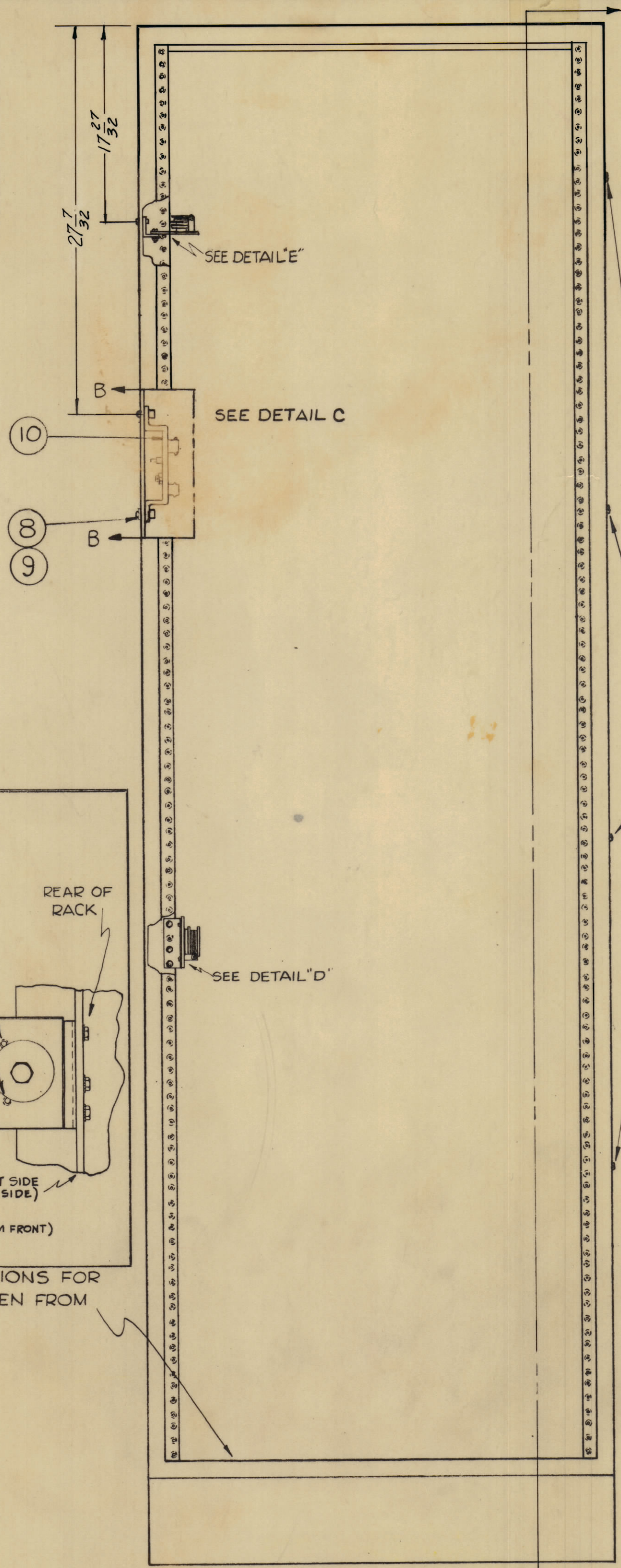
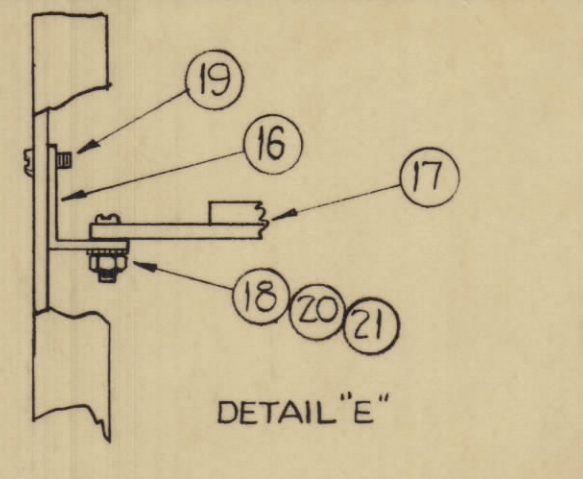


NOTES ~
 1 - ASSEMBLE ITEM 4 (AX-309) BEFORE ASSEMBLY OF SLIDES, ITEMS 1, 2, & 3.
 2 - ALL DIMENSIONS ARE TO ϕ OF SLIDES.



ALL DIMENSIONS FOR SLIDES TAKEN FROM THIS LIP.

~ FRONT ~
 REF: MS-2799

~ RIGHT SIDE ~
 SECTION A-A

NOTICE TO PERSONS RECEIVING THIS DRAWING
 THE TECHNICAL MATERIEL CORPORATION claims proprietary right in the material disclosed herein. This drawing is issued in confidence for engineering information only and may not be reproduced or used to manufacture anything shown hereon without permission from THE TECHNICAL MATERIEL CORPORATION to the user. This drawing is loaned for mutual assistance and is subject to recall at any time.
 Property of:
 THE TECHNICAL MATERIEL CORPORATION
 MAMARONECK, NEW YORK

1	22	TK-105-18	SLIDE, TILT
2	21	NTH0832BN10	NUT, HEX
2	20	LWE08MRN	LOCKWASHER, EXT.
2	19	SCBS0832BN5	SCREW, MACHINE
2	18	SCBS0832BN8	SCREW, MACHINE
1	17	AS-116	SPRING, ASS'Y
1	16	MS-187B	BRACKET, SPRING MTG.
1	15	SP-137-2	SPRING
1	14	MS-2470	BRACKET, SPRING MTG.
3	13	NTH1032BN12	NUT, HEX
1	12	SCBS0540BN6	SCREW, MACHINE
2	11	SCBS1024BN6	SCREW, MACHINE
1	10	A-2048	ATTENUATOR ASSY.
3	9	LWE06MRN	LOCKWASHER
2	8	SCBS0632BN6	SCREW
149	7	LWE10MRN	LOCKWASHER, SPLIT
147	6	SCHH1032SN8	SCREW, HEX. HEAD
4	5	SCBS0632-BN4	SCREW, MACHINE
1	4	AX-309	A.C. POWER STRIP
5	3	TK108-18	SLIDE, TILT
2	2	TK107-18	SLIDE, TILT
1	1	TK106-18	SLIDE, STATIONARY

DATE	9.18.64	CH. NO.	12368	DRAFTS	APB	ENG. APP.	
DESCRIPTION	IT.10 WAS II REQ.						
ISSUE NO.	A	DATE	10-24-62	CH. NO.	1460	DRAFTS	APB
DESCRIPTION	MODEL WAS RAK-20; UNIT MODELS ADDED TO SEC 'A-A' ITEM (22) ADDED, ITEM (3) WAS G. REQ.						
TOLERANCES	SCALE: 1/4"=DO NOT SCALE						
DEC. DIM. \pm	MAXIMUM ALLOWABLE TOLERANCES HAVE BEEN DETERMINED AND ANY DEVIATIONS WILL BE CAUSE FOR REJECTION.						
FRAC. DIM. \pm 1/64	REMOVE ALL BURRS AND SHARP EDGES						
ANGULAR DIM. \pm							

REQ. UNIT	MODEL	SECTION	ASSY. NO.	DATE	FINISH & SPEC. NO.
	RAK-20A			1-5-62	
STOCK SIZE					
MATERIAL					
TYPE & TEMPER					
HEAT TREAT. SPEC.					
DRAWN					
CHECKED					
FINAL APPROVAL					
A-2266					

A-2266 B