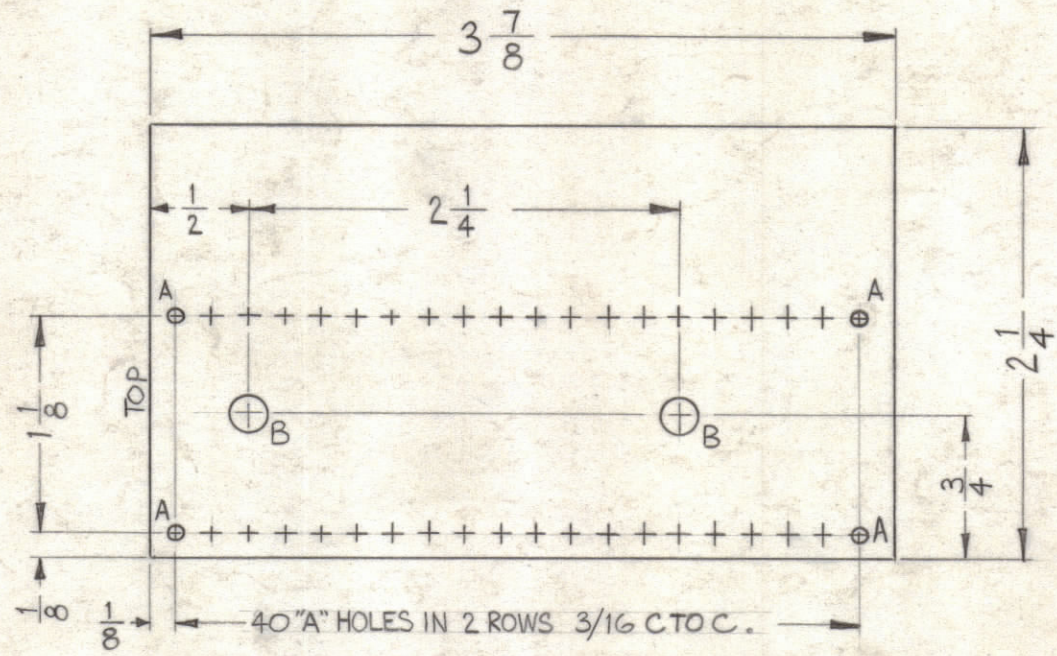
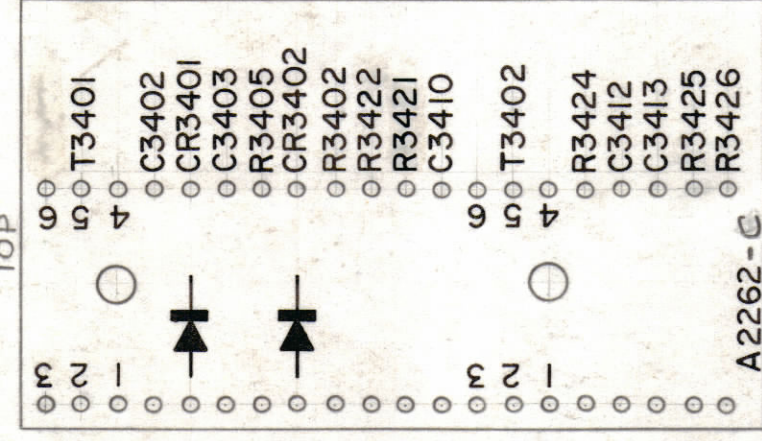


LEGEND		
HOLE	DESCRIPTION	REQ.
A	.078 DIA.	40
B	.189 DIA.	2

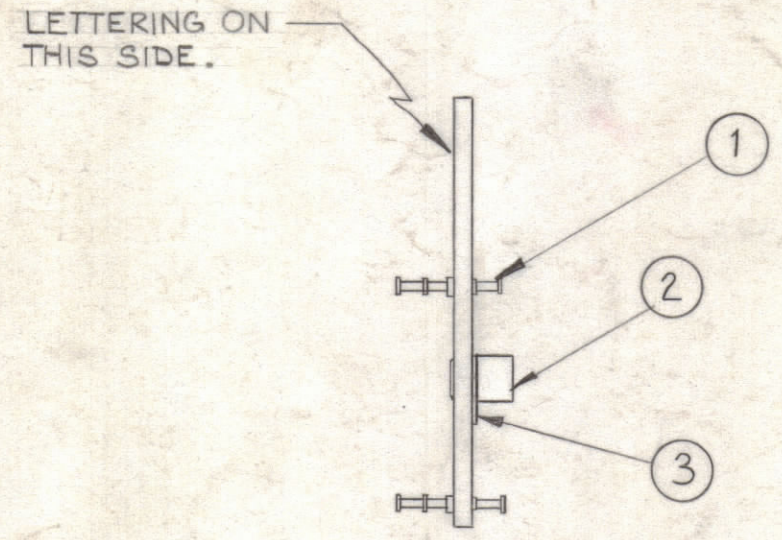
ALL LETTERING TO BE 1/8" HIGH BLACK BOTH SIDES.  
 MARKING PROCESS: AS PER TMC SPEC S-727  
 1/8" HIGH BLACK LUSTERLESS, GOTHIC LETTERING.  
 (PHOTO WRINLAY PROCESS OR EQUIVALENT)



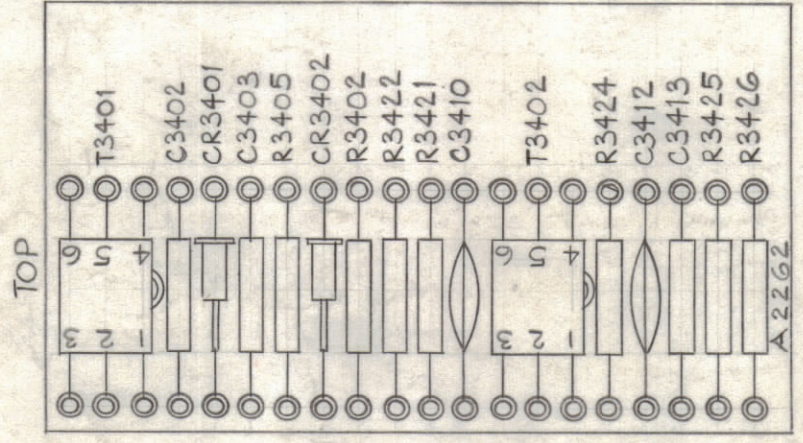
STAGE 1 - MACHINING (A-2262-1).  
 MATERIAL - 3/32, XXXP, PHENOLIC, FINISH - NATURAL.



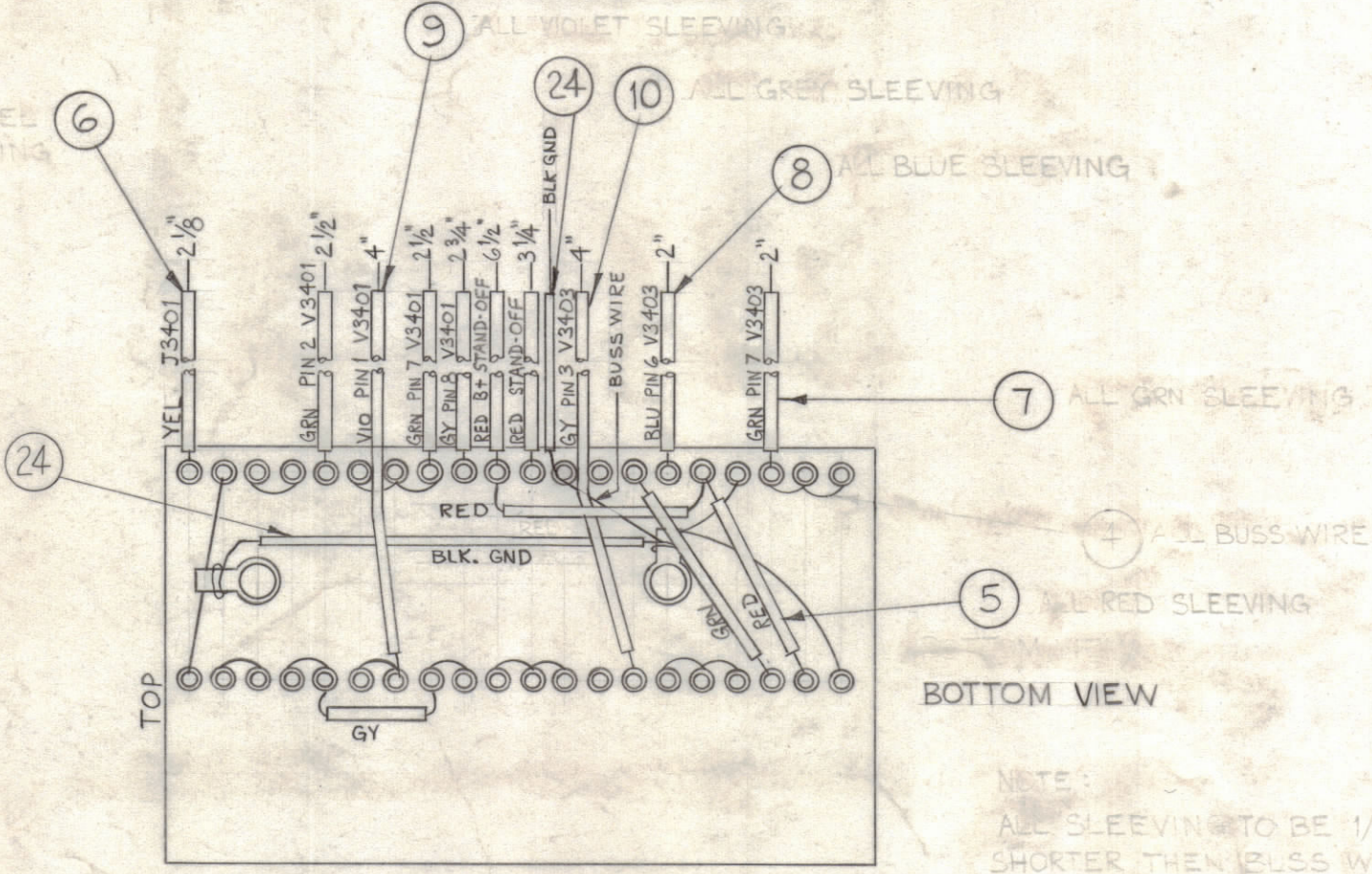
STAGE 2 - STAMPING (A-2262-2).



STAGE 3 - SUB-ASS'Y (A-2262-3).



TOP VIEW



BOTTOM VIEW

STAGE 4 - ELECTRICAL ASS'Y (A-2262-4).

REQ.	ITEM	PART NO.	DESCRIPTION	SYMBOL
X	24	MWC 22(7)U0	WIRE, ELECTRICAL	BLACK
2	23	IN-100	DIODE, GERMANIUM	CR3401,02
1	22	RC20GF824J	RESISTOR, FIXED COMPOSITION - 820K	R3426
1	21	RC20GF563J	RESISTOR, FIXED COMPOSITION - 56K	R3405
1	20	RC32GF472K	RESISTOR, FIXED COMPOSITION - 4.7K	R3424
1	19	RC20GF275J	RESISTOR, FIXED COMPOSITION - 2.7M	R3425
1	18	RC20GF332K	RESISTOR, FIXED COMPOSITION - 3.3K	R3421
1	17	RC20GF152K	RESISTOR, FIXED COMPOSITION - 1.5K	R3422
1	16	RC20GF103K	RESISTOR, FIXED COMPOSITION - 10K	R3402
1	15	TF-228-U13	TRANSFORMER, PULSE	T3402
1	14	TF-228-K15	TRANSFORMER, PULSE	T3401
1	13	CM15C 200J03	CAPACITOR, FIXED, MICA DIELECTRIC	C3403
2	12	CM15F 101J03	CAPACITOR, FIXED, MICA DIELECTRIC	C3402,13
2	11	CC-100-37	CAPACITOR, FIXED, CERAMIC DISC	C3410,12
X	10	MWC 22(7)U8	WIRE, ELECTRICAL	GRAY
X	9	U7	WIRE, ELECTRICAL	VIOLET
X	8	U6	WIRE, ELECTRICAL	BLUE
X	7	U5	WIRE, ELECTRICAL	GREEN
X	6	U4	WIRE, ELECTRICAL	YELLOW
X	5	MWC 22(7) U2	WIRE, ELECTRICAL	RED
X	4	BS-100	SOLDER, SOFT	
2	3	TE-116-3	LUG, SOLDER	
2	2	TE-108-3	STANDOFF, RIVET TYPE	
40	1	TE-168-4-C	TERMINAL, MINIATURE, STAKE TYPE	

SYM	ZONE	DESCRIPTION	DATE	CH. NO.	DRAFTS	CHECKER	ENG. APP.
E		FIN CHG. IT 12 W/CMISB101K II. ISW/CM15B200J	8-24-62	20791	GE		
D	C2	CC-100-37 WAS CC-100-28	11-26-62	10344			
C	D2, C2	ITEM (8) WAS RC20GF332J, (12) WAS CM15C101K	11-7-62	7604			
B	D2	ITEM 24 WAS MWC 22(7)U1	10-26-62	7517			
A	D2, C2, 7	ITEM (24) ADDED TO BUILD V.P. # STAGE (4)	9-27-62	7250			

UNLESS OTHERWISE SPECIFIED:  
 DIMENSIONS ARE IN INCHES  
 TOLERANCES ON  
 FRACTIONS ± 1/64    DECIMALS ± .005    ANGLES ± 1/2°

SCALE  
 MAXIMUM ALLOWABLE TOLERANCES HAVE BEEN DETERMINED AND ANY DEVIATIONS WILL BE CAUSE FOR REJECTION.  
 REMOVE ALL BURRS & SHARP EDGES

REQ. PER UNIT	MODEL	SECTION	ASS'Y. NO.	DATE
1	HFS-1	3400		8-17-62

REQ.	ITEM	PART NO.	J. STRUMMER	DESCRIPTION	SYMBOL
<b>THE TECHNICAL MATERIEL CORP.</b> MAMARONECK, NEW YORK					
TERMINAL BOARD & COMPONENT ASS'Y. PHANASTRON DIVIDER, 3400 DECK					
DRAWN		CHECKED		FINAL APPROVAL	
J.M.F.		D.B. Man		R.P.	
TYPE & TEMPER		HEAT TREAT. SPEC.		FINISH & SPEC. NO.	
				A-2262	
ELEC. DES. APP.		MECH. DES. APP.		SHEET OF	
				E	