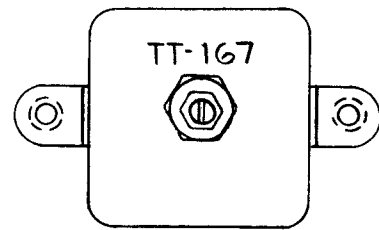


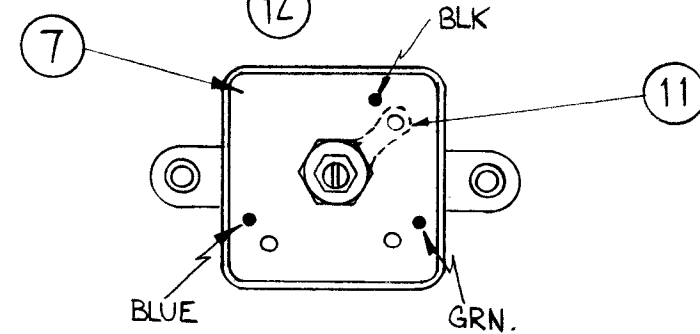
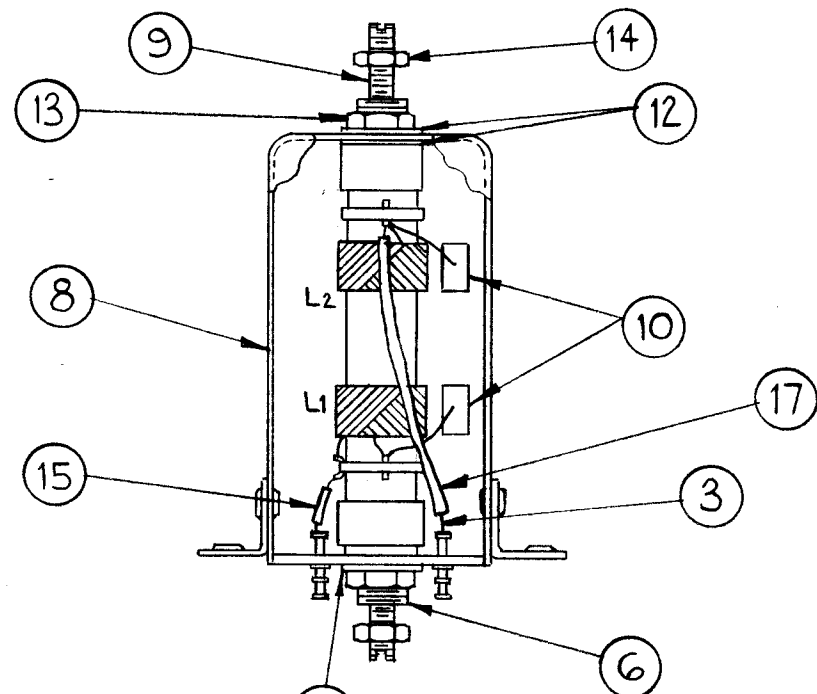
A-2261

THE CONTENTS OF THIS DRAWING ARE THE EXCLUSIVE PROPERTY OF THE TECHNICAL MATERIEL CORP. ITS UNAUTHORIZED USE OR REPRODUCTION IN WHOLE OR IN PART IS STRICTLY FORBIDDEN.

STAMP CAN AS SHOWN 1/8 HIGH BLACK GOTHIC. NOTE ~ STAMP TMC INSIGNIA & APPROVAL ON SIDE OF CAN.



CEMENT COIL FORMS TO BUSHINGS WITH GL-103.



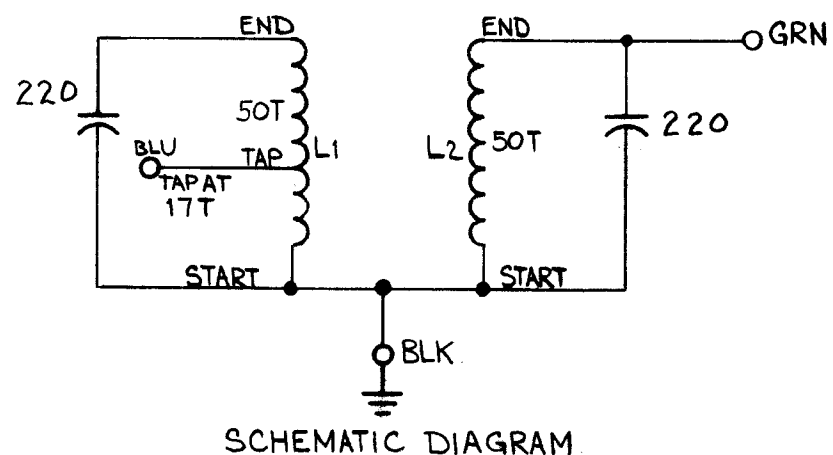
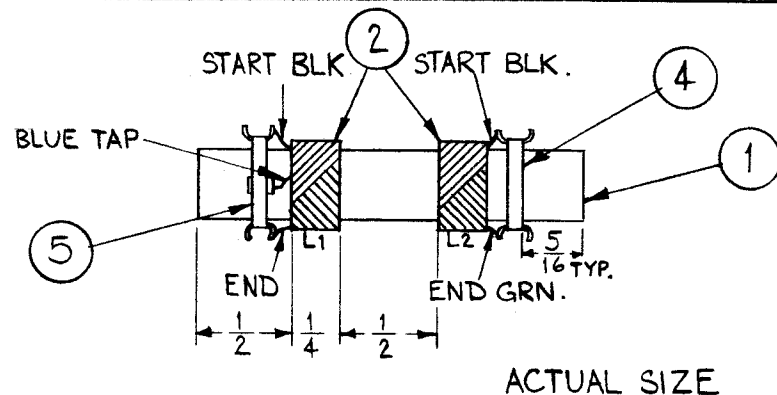
COLOR CODE TERMINAL BOARD AS SHOWN.

WINDING MACHINE DATA

CAM GEAR ~ 106  
DRIVER GEAR ~ 69  
CAM ~ .250

WINDING DATA

- 1~ START WINDING L1 1/2" FROM END OF FORM.
- 2~ TAP COIL AT 17 TURNS AND END WINDING AT 50 TURNS.
- 3~ KEEP ALL LEADS APPROX. 2" LONG.
- 4~ STAKE LEADS TO COIL WITH ITEM 20 (GL-103).
- 5~ START WINDING L2 1/2" FROM END OF WINDING L1.
- 6~ END WINDING AT 50 TURNS.
- 7~ STAKE LEADS TO COIL FORM.
- 8~ BAKE FOR 1/2 HOUR AT 215°F.
- 9~ IMMEDIATELY APPLY COATING GL-104-2 (ITEM 19).
- 10~ BAKE HARD FOR 1/2 HOUR AT 215°F.
- 11~ TEST AS SHOWN IN TEST DATA.
- 12~ ASSEMBLE AS SHOWN.



TEST DATA (W/OUT CORE).

WINDING L1  
IND = 24.5  $\mu$ h  $\pm$  1.0  
Q = 65 OR GREATER  
FREQ = 2.5 MC

WINDING L2  
24.5  $\mu$ h  $\pm$  1.0  
Q = 65 OR GREATER  
FREQ = 2.5 MC

USE BOONTON CORP. Q METER MODEL 160A OR EQUIV.

X	20	GL-103	CEMENT, DUCO	
X	19	GL-104-2	INSULEX, U85	
X	18	BS-100	SOLDER, SOFT	
X	17	PX-104-4-.034	SLEEVING, INSULATION	GREEN
X	16	PX-104-1-.034	SLEEVING, INSULATION	BLACK
X	15	PX-104-6-.034	SLEEVING, INSULATION	BLUE
2	14	NTH0632BN8	NUT, HEX	
2	13	NTH2528BN14	NUT, HEX.	
3	12	LWI25MRN	LOCKWASHER, INTERNAL	
1	11	TE-104-5	LUG, TERMINAL	
2	10	CM15B221K	CAPACITOR, FIXED MICA	
2	9	CI-109-7	CORE, TUNING	
1	8	A-1513	CAN ASS'Y.	
1	7	PX-647	TERMINAL BOARD	
2	6	SM-145	BUSHING, COIL MTG.	
1	5	TE-170-3	TERMINAL, COLLAR	
1	4	TE-170-2	TERMINAL, COLLAR	
X	3	WL-100-8	WIRE, BUSS. # 24	
X	2	WI-104-341-SCP	WIRE - LITZ	
1	1	CF-117-2.00	COIL FORM, 3/8 O.D.	

REQ.	ITEM	PART NO.	DESCRIPTION	SYMBOL
<b>THE TECHNICAL MATERIEL CORP.</b> MAMARONECK, NEW YORK				
<b>TT-167 ASS'Y.</b> (TRANSFORMER, RF TUNED)				
MATERIAL				
STOCK SIZE				
FINISH & SPEC. NO.				
TYPE & TEMPER		HEAT TREAT. SPEC.	DRAWN	CHECKED
			<i>W.A.F.</i>	<i>Ruzzo</i>
			<i>[Signature]</i>	<i>[Signature]</i>
			A-2261	

SYM	DESCRIPTION	DATE	CH. NO.	DRAFTS	CHECKER	ENG. APP.
UNLESS OTHERWISE SPECIFIED:						
DIMENSIONS ARE IN INCHES						
TOLERANCES ON FRACTIONS $\pm$ 1/64 DECIMALS $\pm$ .005 ANGLES $\pm$ 1/20						
SCALE: DO NOT SCALE						
MAXIMUM ALLOWABLE TOLERANCES HAVE BEEN DETERMINED AND ANY DEVIATIONS WILL BE CAUSE FOR REJECTION. REMOVE ALL BURRS AND SHARP EDGES						

REQ. PER UNIT	MODEL	SECTION	ASS'Y. NO.	DATE
1	LFA-2			1-3-62
USED ON				