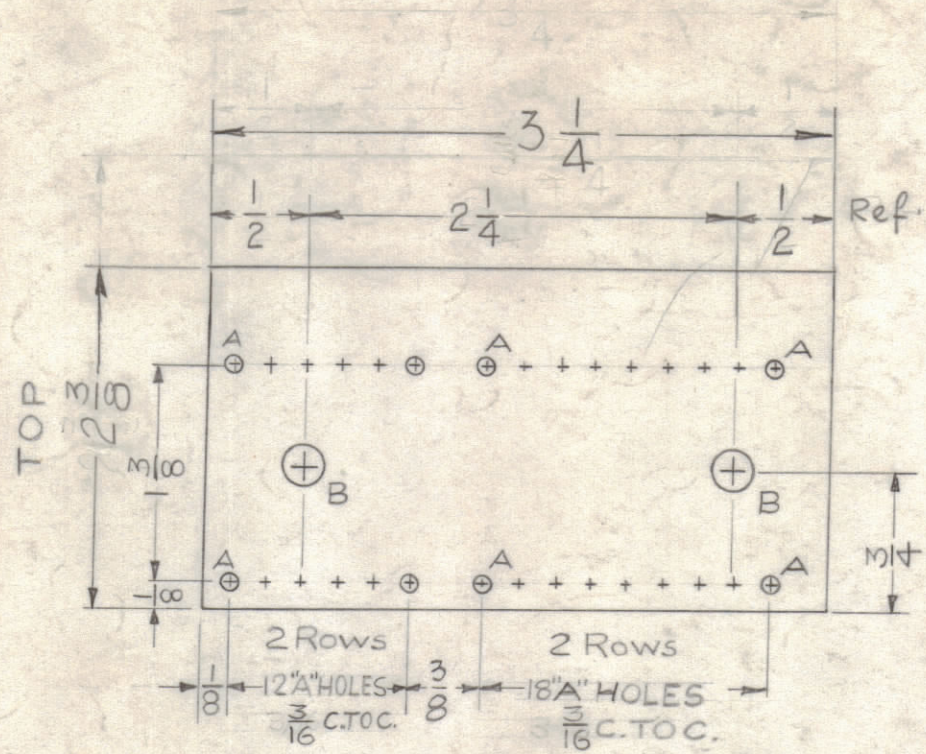
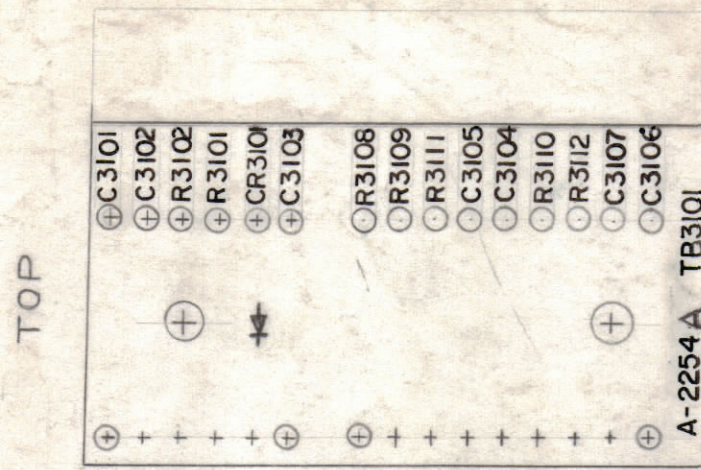


HOLES
A - .078 D. 30 REQ.
B - .189 D. 2 REQ.

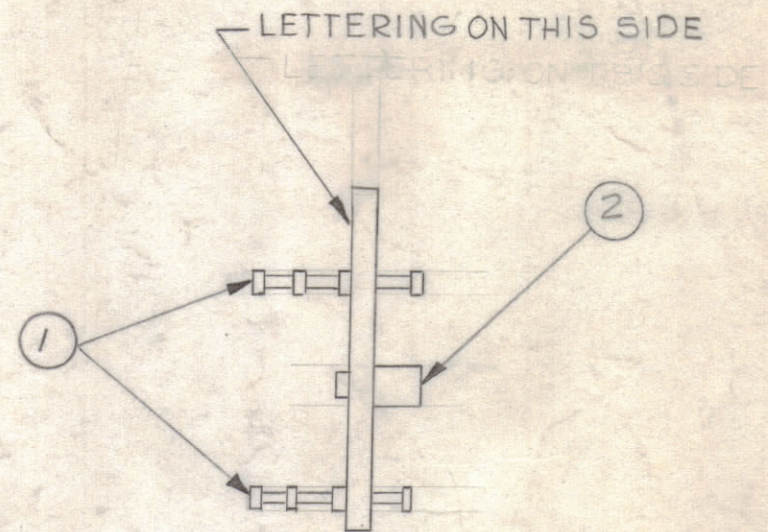


STAGE-1-MACHINING
MATERIAL - $\frac{1}{32}$ XXXP, PHENOLIC, FINISH - NATURAL

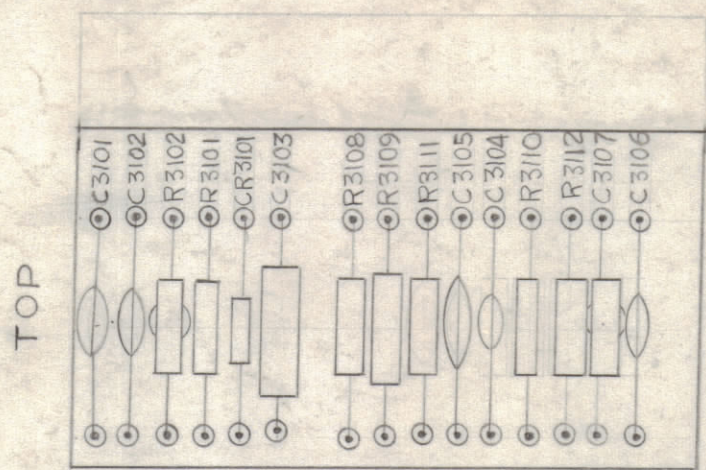
ALL LETTERING TO BE $\frac{3}{32}$ HIGH BLACK GOTHIC AS SHOWN



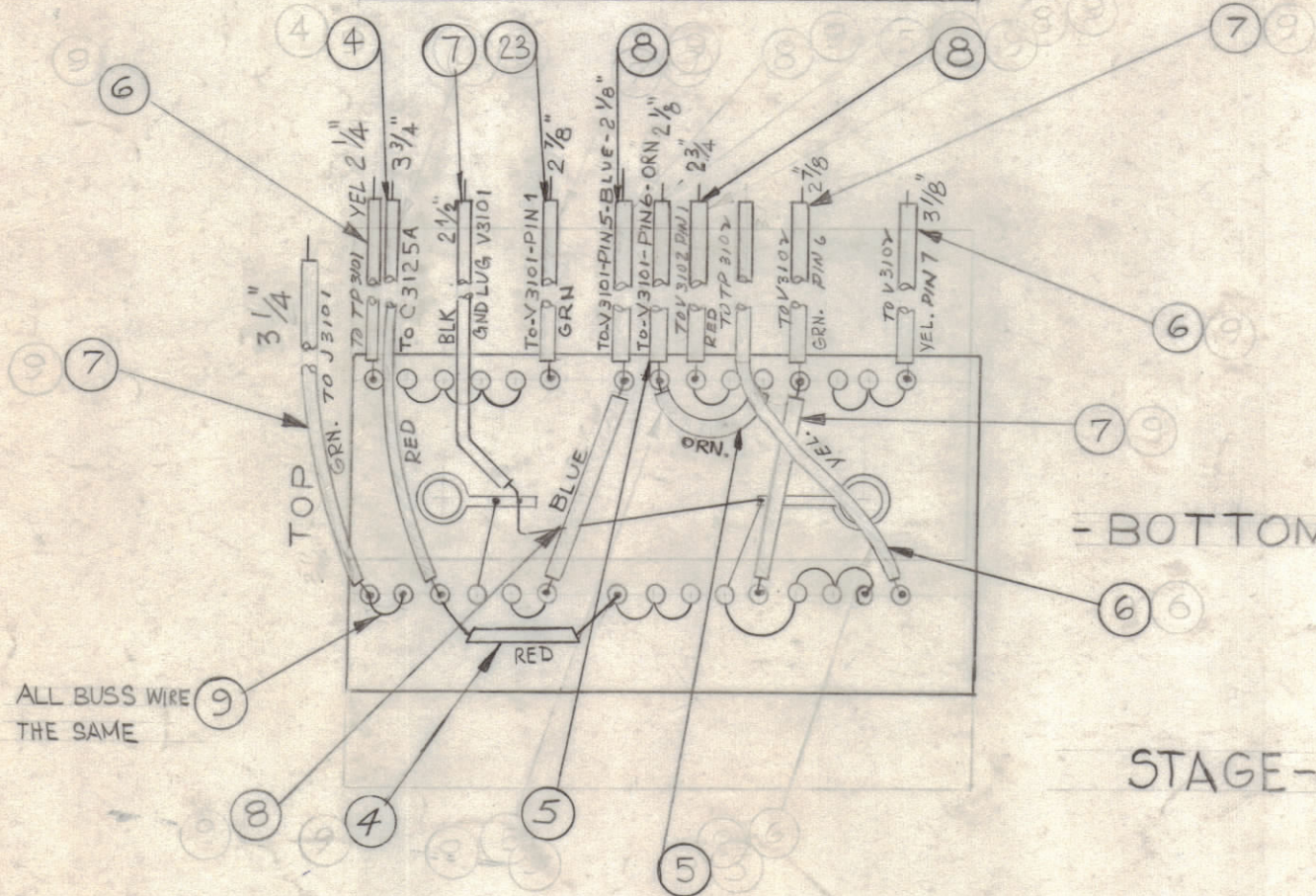
STAGE-2-STAMPING (A2254-2)
3/32 HIGH BLACK LUSTERLESS, GOTHIC LETTERING.
(MARKING PROCESS: AS PER TMC SPECIFICATION S-727 ALENT)



STAGE-3-SUB ASS'Y (A-2254-3)



-TOP VIEW-



-BOTTOM VIEW-

NOTE: ALL SLEEVING TO BE $\frac{1}{2}$ " SHORTER THAN WIRE.

STAGE-4 ELECTRICAL ASS'Y (A-2254-4)

2 1/2"	23	MWC 22 (7) UO	CABLE, INSULATED	BLACK
X	22	BS-100	SOLDER, SOFT	
I	21	RC-206F 333K	RESISTOR CAR 33K	R3112
I	20	RC-206F 153K	RESISTOR CAR 15K	R3111
I	19	RC 30 6F 153K	RESISTOR CARBON 15K	R3109
I	18	RC206F 225K	RESISTOR CAR 2.2M	R3101
3	17	RC206F 104K	RESISTOR, CARBON, 100K	R-3110- R-3105 R-3102
I	16	IN 463	SILICON DIODE	CR3101
I	15	CM20B102K	CAPACITOR, FIXED MICA-DIELECTRIC	C3107
I	14	CM35B 472 J	CAPACITOR, FIXED MICA	C3103
I	13	CC-100-37M	CAPACITOR, DISK, MYLAR	C3105
I	12	CC-100-16		C3102
I	11	CC-100-15		C3104
2	10	CC-100-9	CAPACITOR, DISK	C-3101 C-3106
5"	9	WL-100-6	BUSS WIRE	
2 3/4"	8	MWC 22 (7) U6	WIRE, ELECTRICAL	BLUE
9"	7			GREEN
7 7/8"	6			YELLOW
2 3/4"	5			ORANGE
7 7/8"	4	MWC 22 (7) U 2	WIRE, ELECTRICAL	RED
2	3	TE-116-3	SOLDER LUG	
2	2	TE-108-13	STANDOFF-RIVET TYPE	
30	1	TE-168-4-C	TERMINAL-MINIATURE, STAKE TYPE	

REQ. ITEM	PART NO.	J. STRUMMER	DESCRIPTION	SYMBOL
THE TECHNICAL MATERIEL CORP. MAMARONECK, NEW YORK				
TERMINAL BOARD ASS'Y. PHANOSTRON DIVIDER				
MATERIAL		C.A.	DRW	APP
TYPE & TEMPER		HEAT TREAT. SPEC.	DRAWN CHECKED FINAL APPROVAL	
FINISH & SPEC. NO.		ELEC. DES. APP. MECH. DES. APP.		A-2254 B
USED ON		SHEET OF		1

SYM	ZONE	DESCRIPTION	DATE	CH. NO.	DRAFTS	CHECKER	ENG. APP.
B	1	ITEM 13 WAS CN-114-R10-4M	1/22/64	10162		J.R.	J.R.
A	C2	ITEM (15) WAS CM15C271K	11-16-62	7599		J.R.	J.R.
UNLESS OTHERWISE SPECIFIED:		SCALE DO NOT SCALE					
DIMENSIONS ARE IN INCHES		MAXIMUM ALLOWABLE TOLERANCES HAVE BEEN DETERMINED AND ANY DEVIATIONS WILL BE CAUSE FOR REJECTION. REMOVE ALL BURRS & SHARP EDGES					
TOLERANCES ON FRACTIONS ± 1/64		DECIMALS ± .005		ANGLES ± 1/2°			