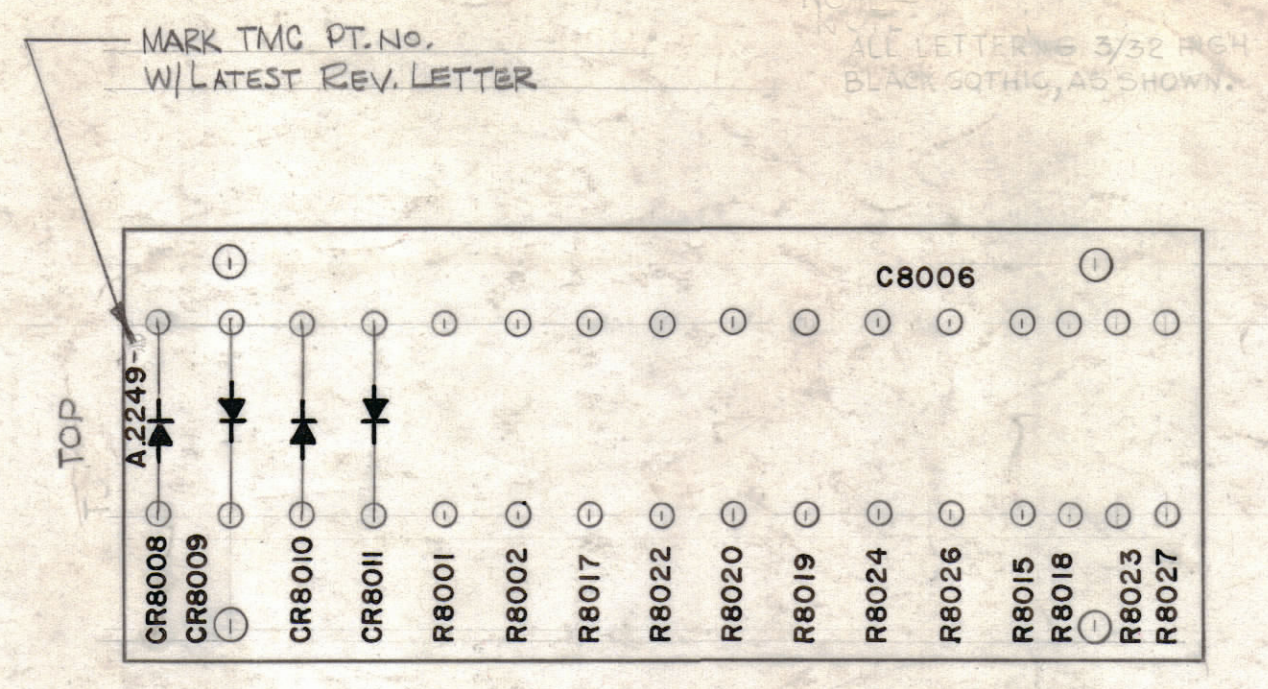
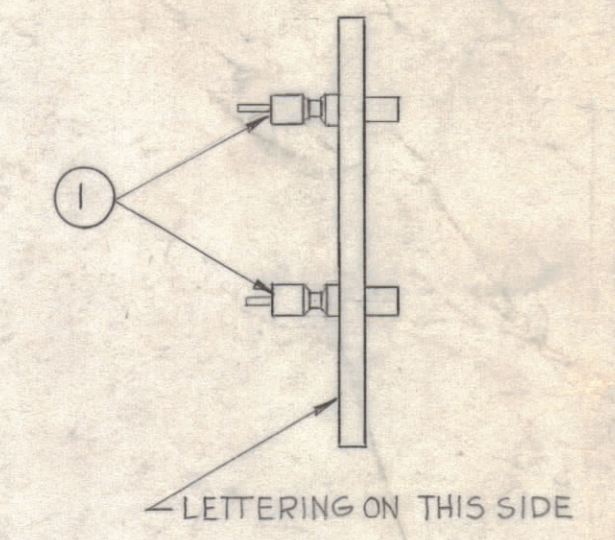


HOLES ~
 A- 5/32 D. 4 Req.
 B- .116 D. 32 Req.

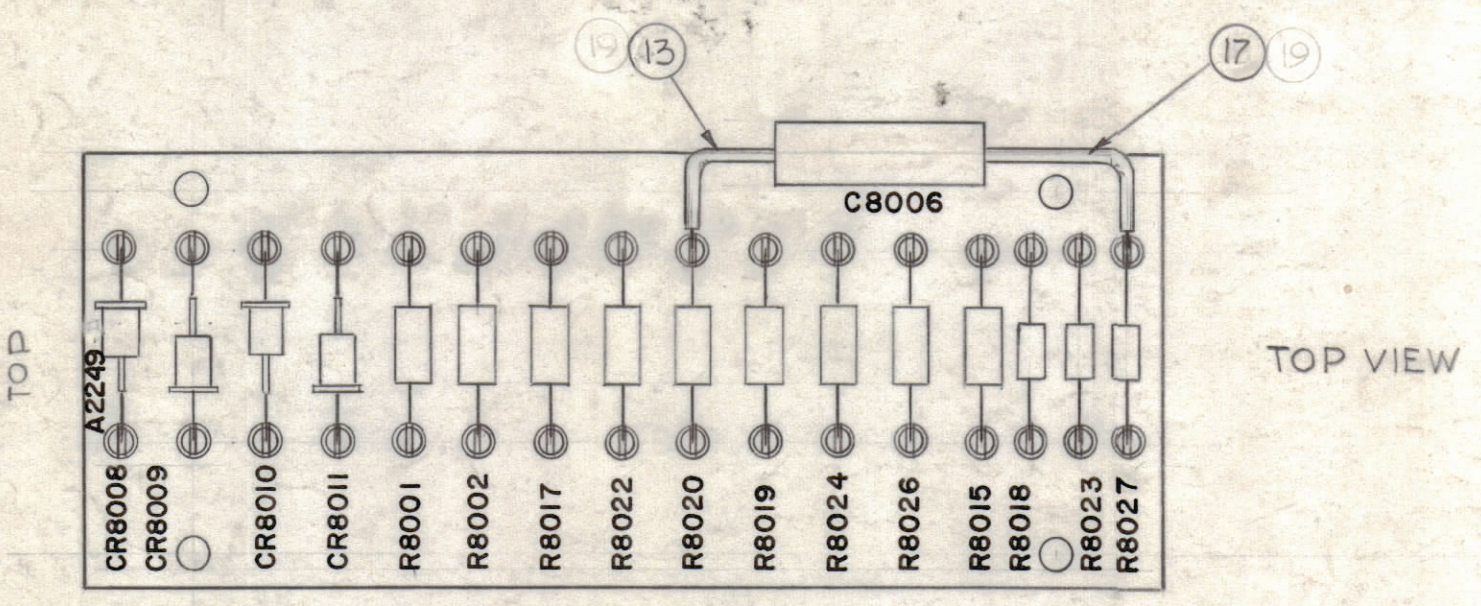
STAGE-1
 MACHINING (A-2249-1)
 MATERIAL - 1/8, XXXP, PHENOLIC, FINISH NATURAL



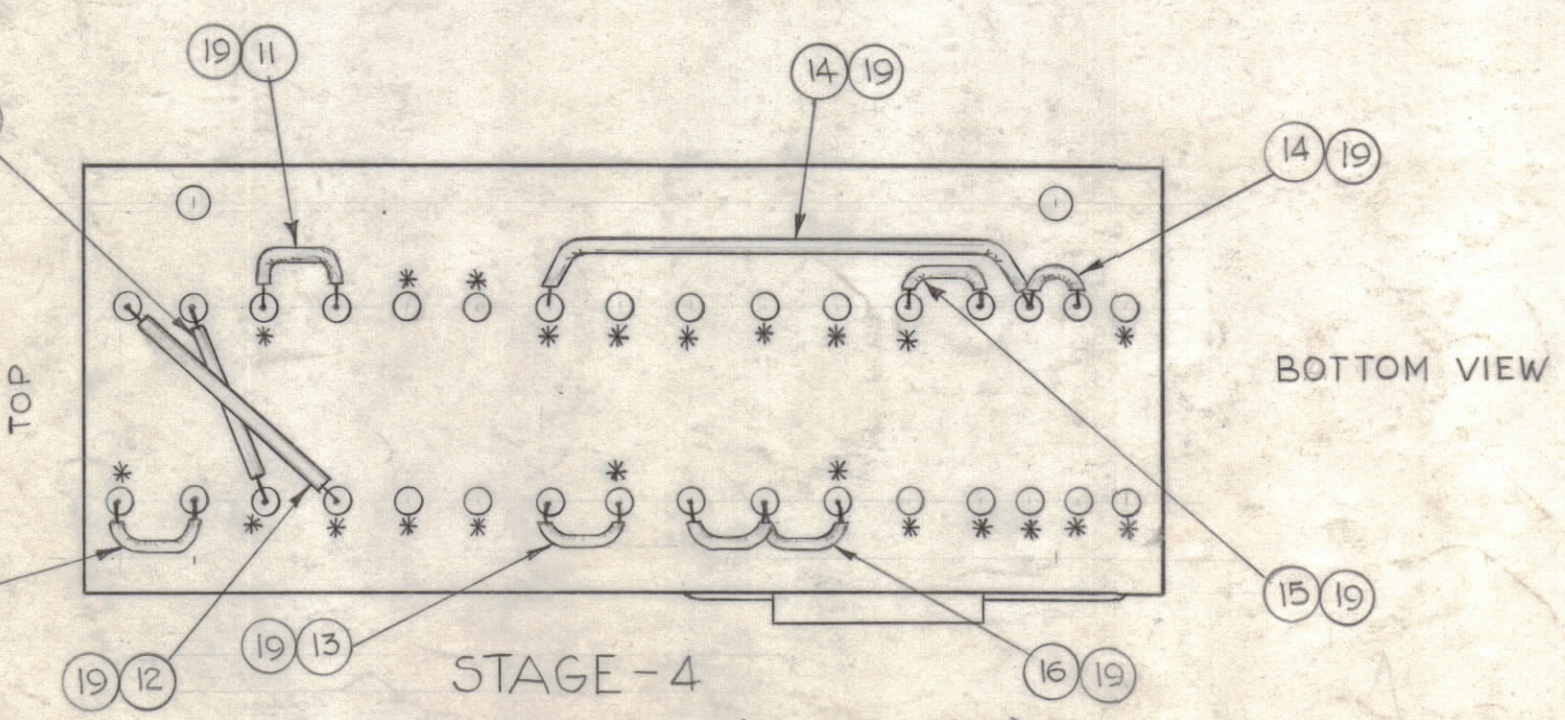
STAGE-2
 STAMPING (A-2249-2)
 NOTE: ALL LETTERING 3/32 HIGH, BLACK LUSTERLESS, GOTHIC.
 MARKING PROCESS: AS PER TMC SPECIFICATION S-727



STAGE-3
 SUB-ASS'Y (A-2249-3)



TOP VIEW



BOTTOM VIEW

STAGE-4
 ELECTRICAL ASS'Y (A-2249-4)

NOTE:
 *-INDICATES DO NOT SOLDER

NOTICE TO PERSONS RECEIVING THIS DRAWING
 THE TECHNICAL MATERIEL CORPORATION claims proprietary right in the material disclosed herein. This drawing is issued in confidence for engineering information only and may not be reproduced or used to manufacture anything shown hereon without permission from THE TECHNICAL MATERIEL CORPORATION to the user. This drawing is loaned for mutual assistance and is subject to recall at any time.
 Property of:
 THE TECHNICAL MATERIEL CORPORATION
 MAMARONECK, NEW YORK

2	20	RC42 GF 223J	RESISTOR, FIXED COMPOSITION	R8015 R8026
X	19	WL-100-7	WIRE, BUSS	
X	18	BS-100	SOLDER, SOFT	
X	17	PX-104-4-034	INSULATION, SLEEVING	GREEN
X	16	PX-104-2-.034	INSULATION, SLEEVING	YELLOW
X	15	PX-104-9-.034		VIOLET
X	14	PX-104-6-.034		BLUE
X	13	PX-104-3-.034		RED
X	12	PX-104-1-.034		BLACK
X	11	PX-104-7-.034	INSULATION, SLEEVING	GRAY
1	10	RC20 GF 101 K	RESISTOR, FIXED, COMPOSITION	R8027
2	9	RC20 GF 102 J	RESISTOR, FIXED, COMPOSITION	R8018 R8023
1	8	RC42 GF 683 J	RESISTOR, FIXED, COMPOSITION	R8024
2	7	RC42 GF 180 J	RESISTOR, FIXED, COMPOSITION	R8019 R8020
1	6	RC42 GF 333 J	RESISTOR, FIXED, COMPOSITION	R8022
1	5	RC42 GF 473 K	RESISTOR, FIXED, COMPOSITION	R8017
2	4	RC42 GF 220 K	RESISTOR, FIXED COMPOSITION	R8001 R8002
1	3	CN114-1R0-4J	CAPACITOR, FIXED, MYLAR	C8006
4	2	1N547	SILICON RECTIFIER	CR8008 thru 8011
32	1	TE-109-3	TERMINAL, LUG, SPLIT	

REQ.	ITEM	PART NO.	DESCRIPTION	SYMBOL
KOHN				
THE TECHNICAL MATERIEL CORP. MAMARONECK, NEW YORK				
STOCK SIZE				
TERMINAL BOARD & COMPONENT				
ASSY # 2 (TB-8002)				
MATERIAL				
GDL HLD BP				
DRAWN CHECKED FINAL APPROVAL				
TYPE & TEMPER HEAT TREAT. SPEC.				
RK RK A-2249 F				
FINISH & SPEC. NO.				
ELEC. DES. APP. MECH. DES. APP. SHEET OF				

E	IT. 3 WAS "CNOSE/00K"	3-11-66	15938	HLA	CTB	
E	CLERICAL CHANGE	11/17/65	CC	BVK	CTB	
D	DN B/M IT. 7 WAS RN123-270J	11-20-64	12930	92	HLA	
C	ES, 6 STAGE 4; TOP VIEW, ITEM (19) DELETED	7-14-64	11893			
B	UPDATED BUILDUP	1-23-64	10782			
A	C2 ITEMS (11) TO (17) CLARIFIED	3-11-63	8456			
SYM	ZONE	DESCRIPTION	DATE	CH. NO.	DRAFTS	CHECKER ENG. APP.

UNLESS OTHERWISE SPECIFIED:
 DIMENSIONS ARE IN INCHES
 TOLERANCES ON
 FRACTIONS ± 1/64 DECIMALS ± .005 ANGLES ± 1/2°
 SCALE DO NOT SCALE
 MAXIMUM ALLOWABLE TOLERANCES HAVE BEEN DETERMINED AND ANY DEVIATIONS WILL BE CAUSE FOR REJECTION. REMOVE ALL BURRS & SHARP EDGES

REQ. PER UNIT	MODEL	SECTION	ASSY. NO.	DATE
1	HFP-1		A-2382-10	12-2-61
USED ON				
FINISH & SPEC. NO.				