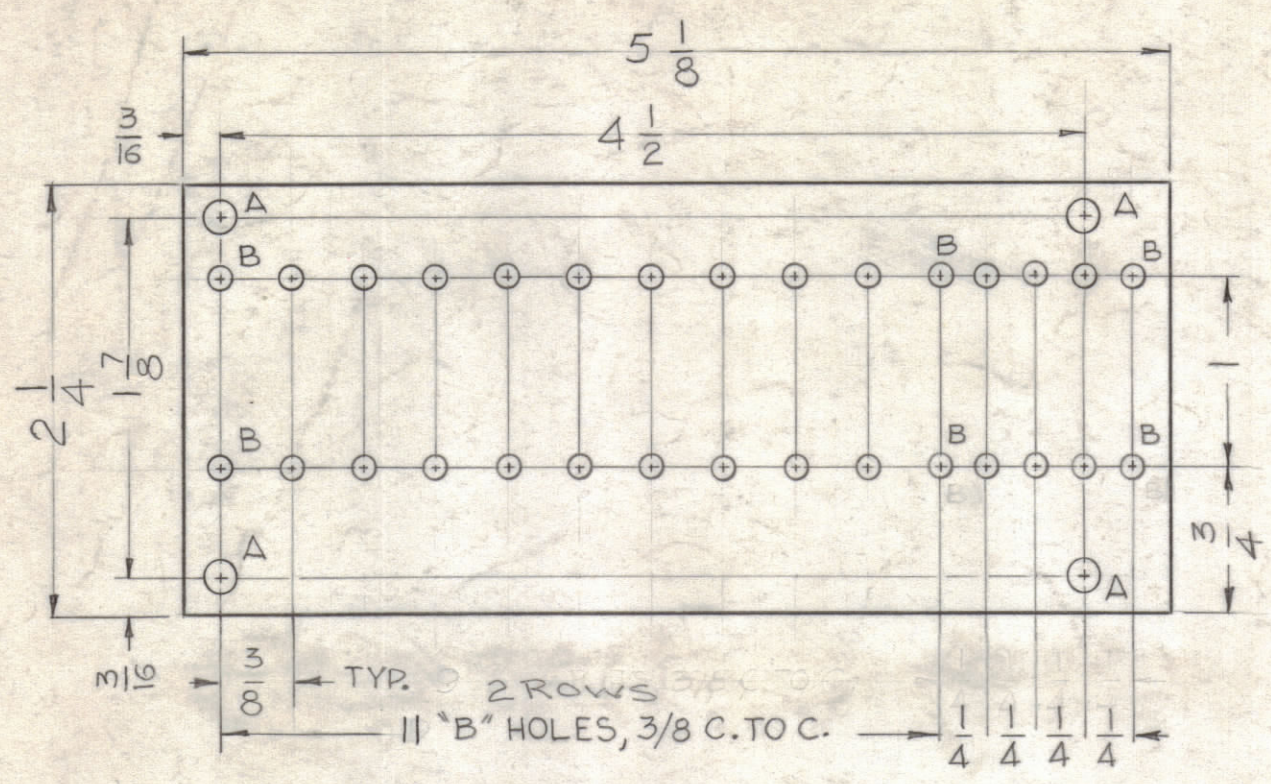
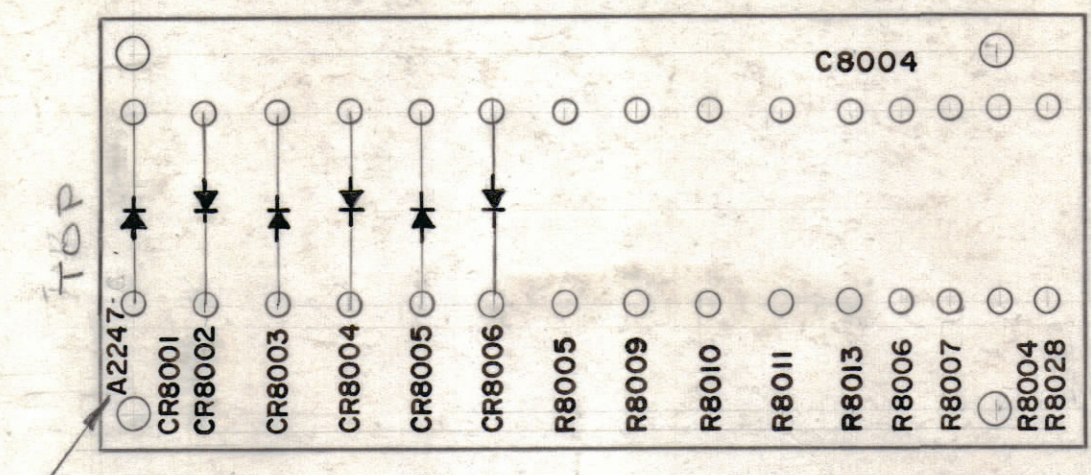


NOTE - ALL LETTERING 3/32 HIGH BLACK GOTHIC, AS SHOWN.

HOLES -
A - 5/32 4 Req.
B - .116 D 30 Req.



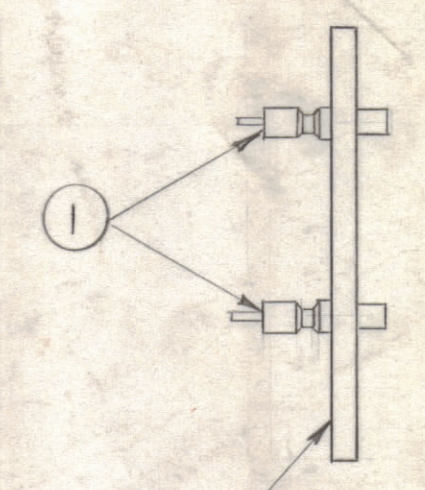
STAGE-1 - MACHINING (A-2247-1)
MATERIAL - 1/8, XXXP, PHENOLIC FINISH NATURAL



MARK TMC PT. NO.
W/ LATEST REV. LETTER

STAGE-2 - STAMPING (A-2247-2)

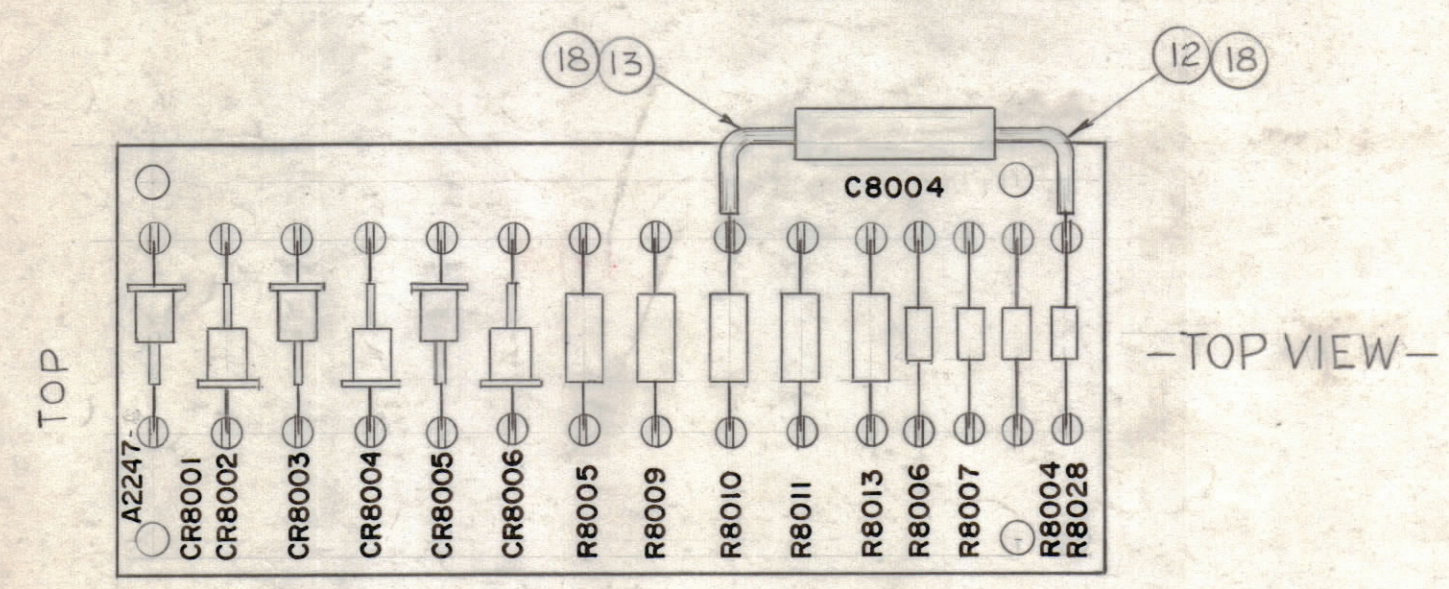
NOTE: ALL LETTERING 3/32 HIGH, BLACK LUSTERLESS, GOTHIC. (THIS MEANS ALL LETTERS OR EQUIV.)
MARKING PROCESS: AS PER TMC SPECIFICATION S-777



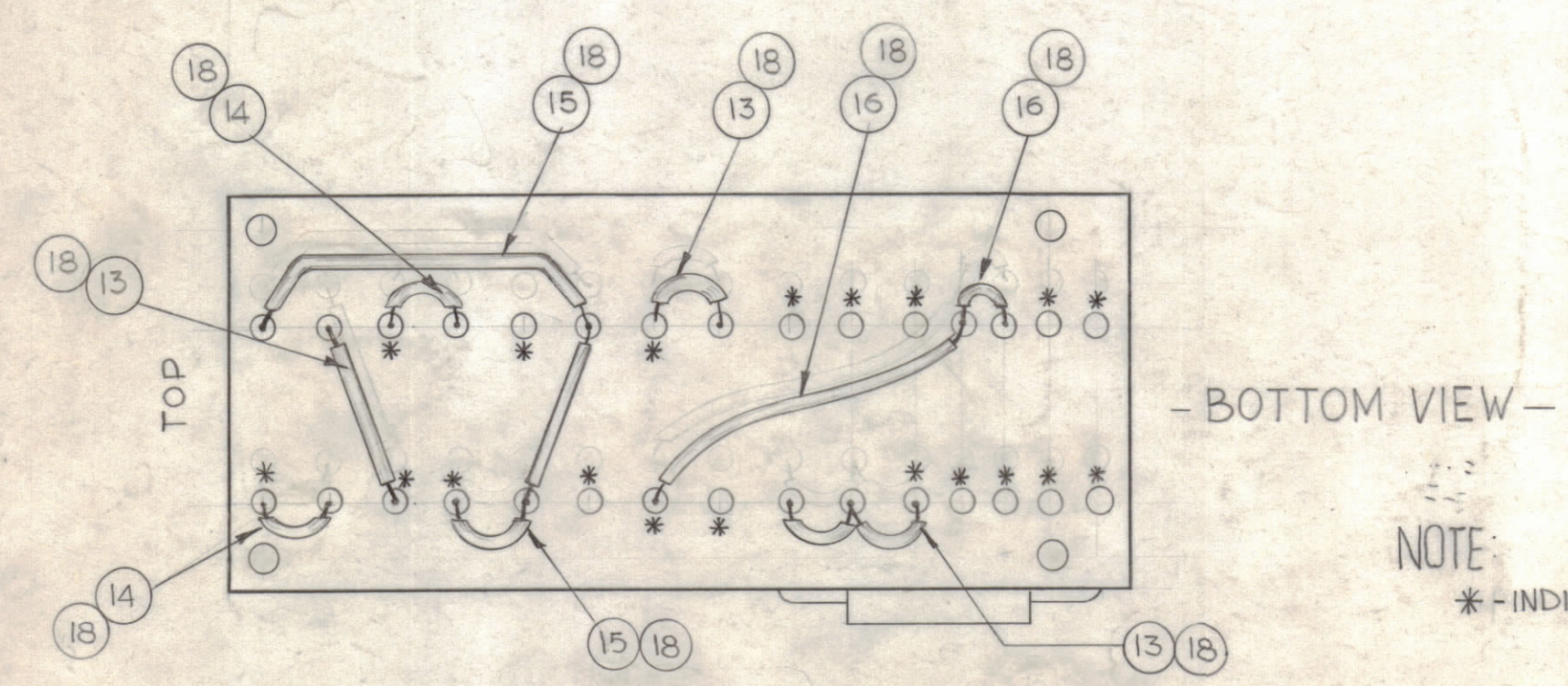
LETTERING ON THIS SIDE

STAGE-3 - SUB-ASSEMBLY (A-2247-3)

NOTICE TO PERSONS RECEIVING THIS DRAWING
THE TECHNICAL MATERIEL CORPORATION claims proprietary right in the material disclosed hereon. This drawing is issued in confidence for engineering information only and may not be reproduced or used to manufacture anything shown hereon without permission from THE TECHNICAL MATERIEL CORPORATION to the user. This drawing is loaned for mutual assistance and is subject to recall at any time.
Property of:
THE TECHNICAL MATERIEL CORPORATION
MAMARONECK, NEW YORK



-TOP VIEW-



-BOTTOM VIEW-

NOTE:
* - INDICATES DO NOT SOLDER

STAGE-4 - ELECTRICAL ASS'Y (A-2247-4)

X	18	WL-100-7	WIRE, BUSS	
X	17	BS-100	SOLDER, SOFT	
X	16	PX-104-6- .034	INSULATION, SLEEVING	BLUE
X	15	PX-104-1- .034		BLACK
X	14	PX-104-7- .034		GRAY
X	13	PX-104-3- .034		RED
X	12	PX-104-4- .034	INSULATION, SLEEVING	GREEN
1	11	RC 20GF 101K	RESISTOR, FIXED COMPOSITION	R8028
1	10	RC 20GF 100K		R8004
2	9	RC 20GF 102J		R8006 R8007
1	8	RC 42GF 683J	RESISTOR, FIXED, COMPOSITION	R8013
1	7	RC 42GF 100K		R8010 R8011
2	6	RC 42GF 180J	RESISTOR, FIXED, WIREWOUND	R8009
1	5	RC 42GF 333J	RESISTOR, FIXED, COMPOSITION	R8005
1	4	RC 42GF 473K	RESISTOR, FIXED COMPOSITION	R8004
1	3	CN114-1R0-4J	CAPACITOR, FIXED, MYLAR	CR8001 thru CR8006
6	2	1N547	SILICON RECTIFIER	
30	1	TE-109-3	TERMINAL, LUG, SPLIT	

REQ. ITEM	PART NO.	DESCRIPTION	SYMBOL
KOHN			
THE TECHNICAL MATERIEL CORP. MAMARONECK, NEW YORK			
TERMINAL BOARD & COMPONENT ASSY # 1 (TB-8001)			
GDL [Signature] [Signature]			
DRAWN [Signature] CHECKED [Signature] FINAL APPROVAL [Signature]			
RK RK A-2247 E			
ELEC. DES. APP. MECH. DES. APP. SHEET OF			

E	IT-3 WAS "CNIOSEI0AK"	3-14-66	15938	HCA	[Signature]	[Signature]
D	SEE SHEET 20F2	1/23/64	CC	DVK	[Signature]	[Signature]
C	ON B/M IT.6 WAS RW123-270J	11-20-64	12930	J.P.	[Signature]	[Signature]
B	UPDATED BUILDUP (ENM. 10782)	1/23/64	10782	[Signature]	[Signature]	[Signature]
A	C2 ON BUILDUP, ITEMS (16) TO (12) CLARIFIED	3-11-63	8456	[Signature]	[Signature]	[Signature]

UNLESS OTHERWISE SPECIFIED:		SCALE DONOT SCALE	
DIMENSIONS ARE IN INCHES		MAXIMUM ALLOWABLE TOLERANCES HAVE BEEN DETERMINED AND ANY DEVIATIONS WILL BE CAUSE FOR REJECTION. REMOVE ALL BURRS & SHARP EDGES	
TOLERANCES ON FRACTIONS ± 1/64		DECIMALS ± .005	
ANGLES ± 1/2°			

1	HFP-1	A-2382-10	12-1-61	
REQ. PER UNIT	MODEL	SECTION	ASSY. NO.	DATE
USED ON				
FINISH & SPEC. NO.				