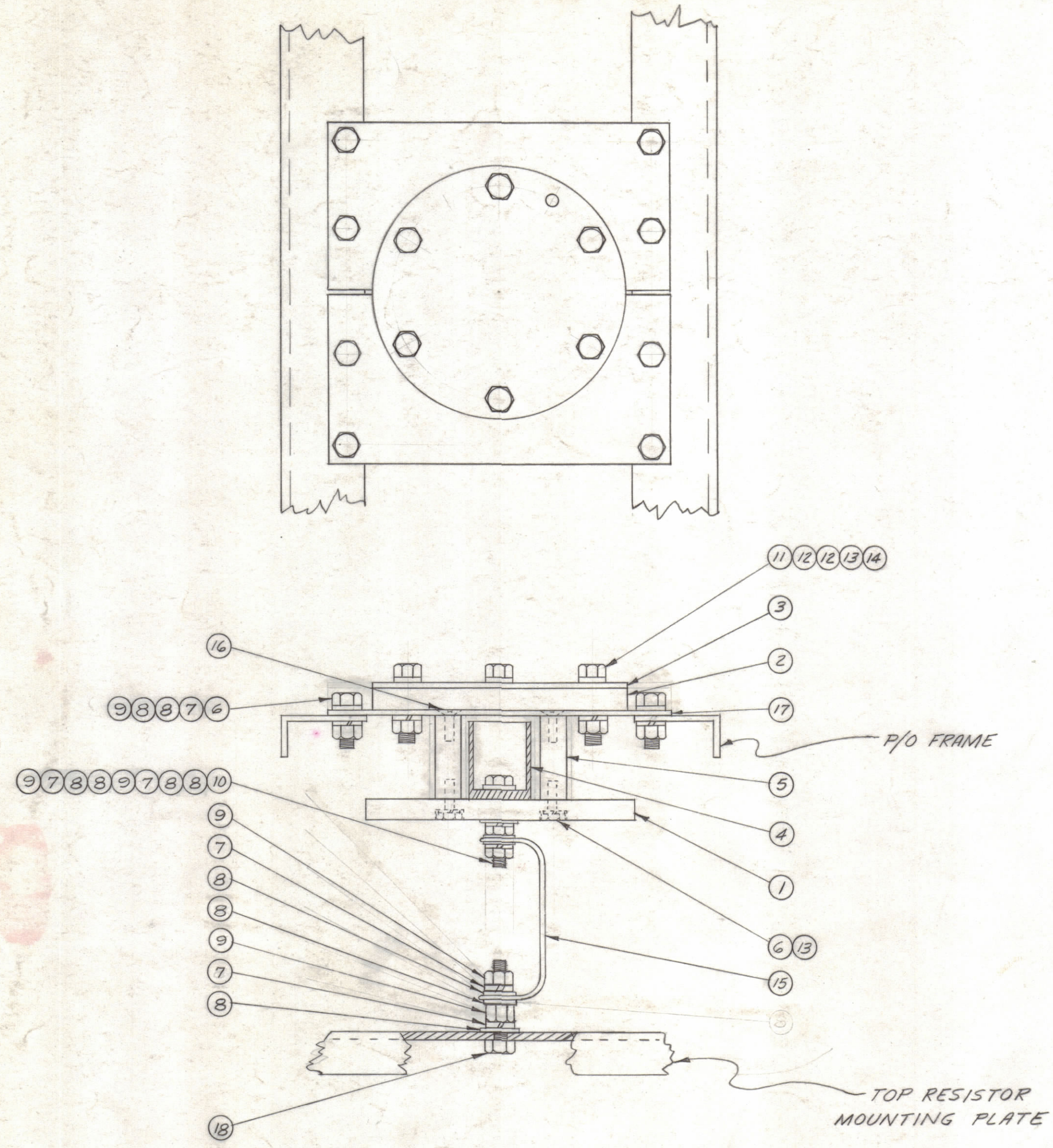


NOTICE TO PERSONS RECEIVING THIS DRAWING

THE TECHNICAL MATERIEL CORPORATION claims proprietary right in the material disclosed hereon. This drawing is issued in confidence for engineering information only and may not be reproduced or used to manufacture anything shown hereon without permission from THE TECHNICAL MATERIEL CORPORATION to the user. This drawing is loaned for mutual assistance and is subject to recall at any time.

Property of:
THE TECHNICAL MATERIEL CORPORATION
MAMARONECK, NEW YORK



REQ.	ITEM	PART NO.	DESCRIPTION	SYMBOL
1	18	SCHH2520BN14	BOLT, MACHINE	
2	17	MS-2170	PLATE MOUNTING, FLANGE	
4	16	SCFP2520BN12	SCREW, FLAT HEAD (PHILLIP)	
1	15	MS-202-25-7.00	LEAD CONNECTING	
6	14	NTH3118BN16	NUT, HEX	
10	13	LWS31MRN	LOCKWASHER SPLIT	
12	12	FW31HBN	WASHER, FLAT	
6	11	SCHH3118BN24	BOLT, MACHINE	
1	10	SCHH2520BN20	BOLT, MACHINE	
12	9	NTH2520BN14	NUT HEX	
23	8	FW25HBN	WASHER FLAT	
12	7	LWS25MRN	LOCKWASHER SPLIT	
12	6	SCHH2520BN10	BOLT, MACHINE	
4	5	TE2520GR59R	SPACER, THREADED	
1	4	PM-727-1	CONTACT, CUP TYPE 50Ω, 3-1/8	
1	3	MS-2360	PLATE, FLANGE	
1	2	PO-223	FLANGE 3-1/8 EIA MOUNT	
1	1	PX-630	PLATE, CONTACT CUP MOUNTING	

REQ.	ITEM	PART NO.	DESCRIPTION	SYMBOL
THE TECHNICAL MATERIEL CORP. MAMARONECK, NEW YORK				
ASSEMBLY, FLANGE, 3-1/8 EIA 50 OHM				
MATERIAL				
w/5.				
TYPE & TEMPER		HEAT TREAT. SPEC.		FINAL APPROVAL
FINISH & SPEC. NO.		ELEC. DES. APP.		MECH. DES. APP.
		SHEET		OF

SYM	ZONE	DESCRIPTION	DATE	CH. NO.	DRAFTS	CHECKER	ENG. APP.
C		ITEM 15 WAS MS202-25-4.00	6-23-62	16396	WHD		
B		ITEM 5 WAS TE2520GR5TR	6-26-62	6770	R.T.		
A	B3	ITEM 5 WAS TE2520GR24R	5-22-62	6721	JEB		

UNLESS OTHERWISE SPECIFIED:
DIMENSIONS ARE IN INCHES
TOLERANCES ON
FRACTIONS ± 1/64 DECIMALS ± .005 ANGLES ± 1/2°

SCALE
MAXIMUM ALLOWABLE TOLERANCES HAVE BEEN DETERMINED AND ANY DEVIATIONS WILL BE CAUSE FOR REJECTION. REMOVE ALL BURRS & SHARP EDGES

REQ. PER UNIT	MODEL	SECTION	ASS'Y. NO.	DATE
1	TER-25K-A-50			12-16-61