

I THE CONTENTS OF THIS DRAWING ARE THE EXCLUSIVE PROPERTY OF THE TECHNICAL MATERIEL CORP. ITS UNAUTHORIZED USE OR REPRODUCTION IN WHOLE OR IN PART IS STRICTLY FORBIDDEN.

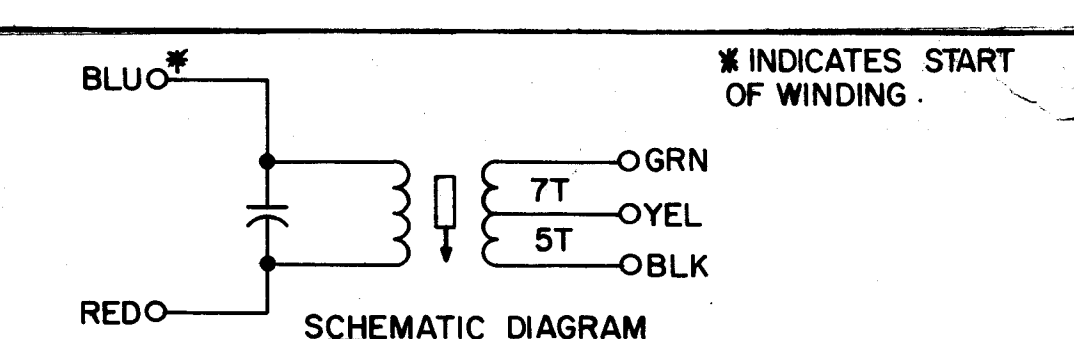
COIL DATA

SPECIFICATIONS	PRIMARY	SECONDARY
CAN	.250	CLOSE WIND
CAN GEAR	105	
CAM DRIVER	69	
IND (uh)	400 ± 20uh	
Q	65 or BETTER	
COIL RES. Ω	12	
TEST FREQ. (KC)	790	
CAPACITANCE (uf)	390	

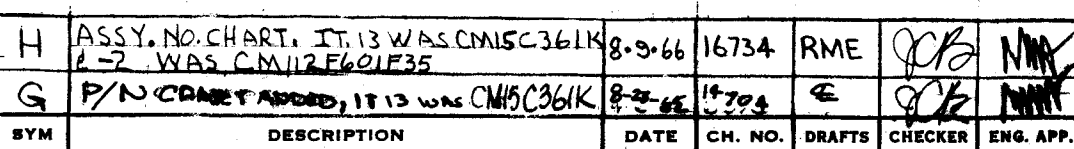
WINDING DATA		
TURNS	250	12
WIRE	3/41 Q.S. LITZ	3/41 Q.S. LITZ

WINDING INSTRUCTIONS

- WIND PRIMARY FIRST 250 TURNS 3/16" FROM END AS SHOWN. STAKE WITH GL-103 (ITEM 9). USE 3/41 LITZ (ITEM 6). MEASURE Q & IND. W/O CORE.
- WIND ONE LAYER ELECTRICAL TAPE (ITEM 19) OVER PRIMARY.
- WIND SECONDARY 12 TURNS 3/41 LITZ (ITEM 6). CLOSE WIND OVER TAPED PRIMARY APPROXIMATELY 1/16" FROM EDGE OF TAPE. TAP SECONDARY 7 TURNS FROM START OF WINDING. STAKE LEADS WITH GL-103 (ITEM 9).
- BAKE FOR 15 MINUTES AT 220°F. SATURATE COILS WITH GL-102 (ITEM 10).
- TIN ALL LEADS.
- SOLDER COIL AND COMPONENT LEADS TO PROPER COLOR-CODED BASE TERMINALS, MOUNTING COIL AS SHOWN.
- SOLDER AND TRIM GROUND LUG TO BLACK TERMINAL.
- ASSEMBLE AS PER ASSEMBLY DRAWING, PLACE IN CAN.

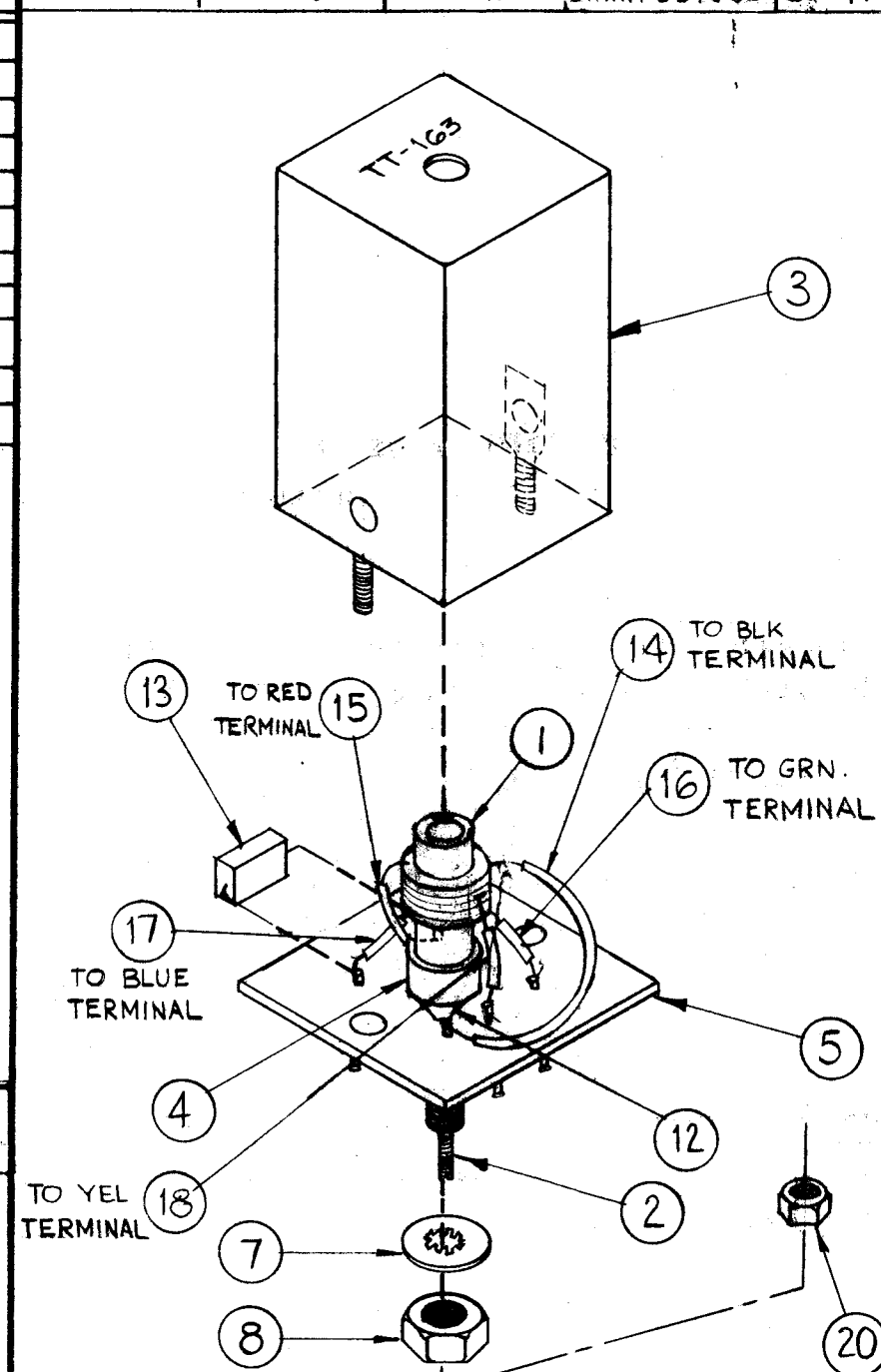


BOTTOM VIEW

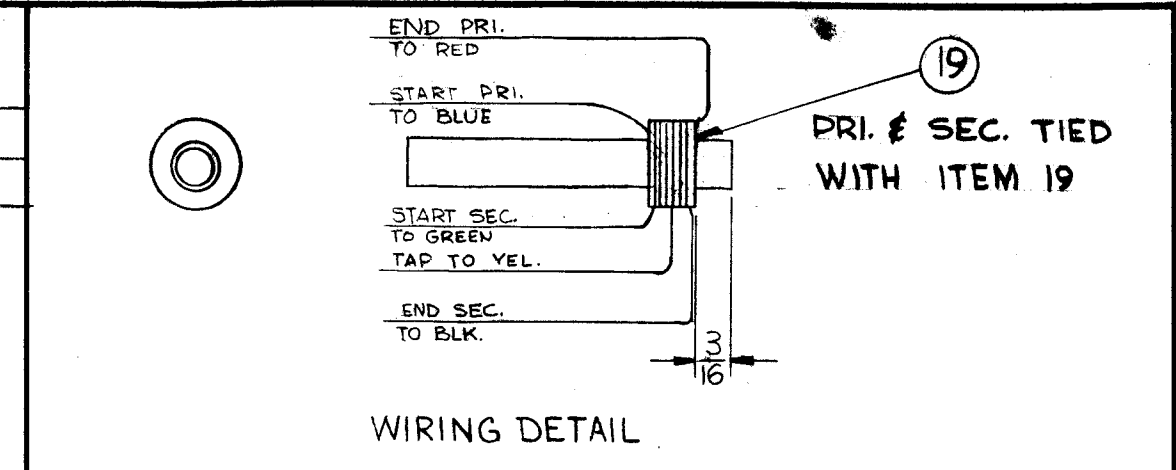


UNLESS OTHERWISE SPECIFIED:
 DIMENSIONS ARE IN INCHES
 TOLERANCES ON FRACTIONS ± 1/64 DECIMALS ± .005 ANGLES ± 1/20
 SCALE: DO NOT SCALE
 MAXIMUM ALLOWABLE TOLERANCES HAVE BEEN DETERMINED AND ANY DEVIATIONS WILL BE CAUSE FOR REJECTION.
 REMOVE ALL BURRS AND SHARP EDGES

TMC ASSY NO	TMC P/N	OPR. FREQ.	ITEM NO.	VALUE
A-2241	TT-163	250KC	GMI5F361G03	360PF
A-2241-2	TT-163-2	205KC	CM11F601J35	600PF



REQ. PER UNIT	MODEL	SECTION	ASSY. NO.	DATE
1	AFC-3			4-6-62
1	AFC-2, 2A			12-7-61



COMPONENT LIST

QTY	ITEM	PART NO.	DESCRIPTION	SYMBOL
1	20	NTH0348BN6	NUT, HEX	
X	19	TA-113-1-.250	TAPE, ELECTRICAL	
X	18	PX-104-7-.085	INSULATION, SLEEVING	GREY
X	17	PX-104-6-.085	INSULATION, SLEEVING	BLUE
X	16	PX-104-4-.085	INSULATION, SLEEVING	GREEN
X	15	PX-104-3-.085	INSULATION, SLEEVING	RED
X	14	PX-104-1-.085	INSULATION, SLEEVING	BLACK
1	13	(SEE CHART)	CAPACITOR, FIXED, MICA	
1	12	TE-104-3	TERMINALS, LOCKING	
X	11	BS-100	SOLDER, SOFT	
X	10	GL-102	Q-DOPE	
X	9	GL-103	DUCO	
1	8	NTH0832BN8	HEX, NUT	
1	7	LW108MRN	LOCKWASHER, INTERNAL	
X	6	WI-104-341-BCQS	WIRE, 3/41 QUICK SOLDER LITZ	
1	5	PX-639	BOARD MOUNTING, TRANSFORMER	
1	4	SM-140-2	BUSHING, COIL MOUNTING	
1	3	A-3029-2	CAN ASSEMBLY	
1	2	CI-126	CORE, TUNING	
1	1	CF-122-1.0	COIL FORM, .250 O.D.	

REQ. ITEM	PART NO.	DESCRIPTION	SYMBOL
THE TECHNICAL MATERIEL CORP. MAMARONECK, NEW YORK			
TT-163 ASS'Y. (OUTPUT TRANSFORMER)			
DRAWN		CHECKED	
MECH. DES. APP.		ELEC. DES. APP.	
FINISH & SPEC. NO.		FINAL APPROVAL	