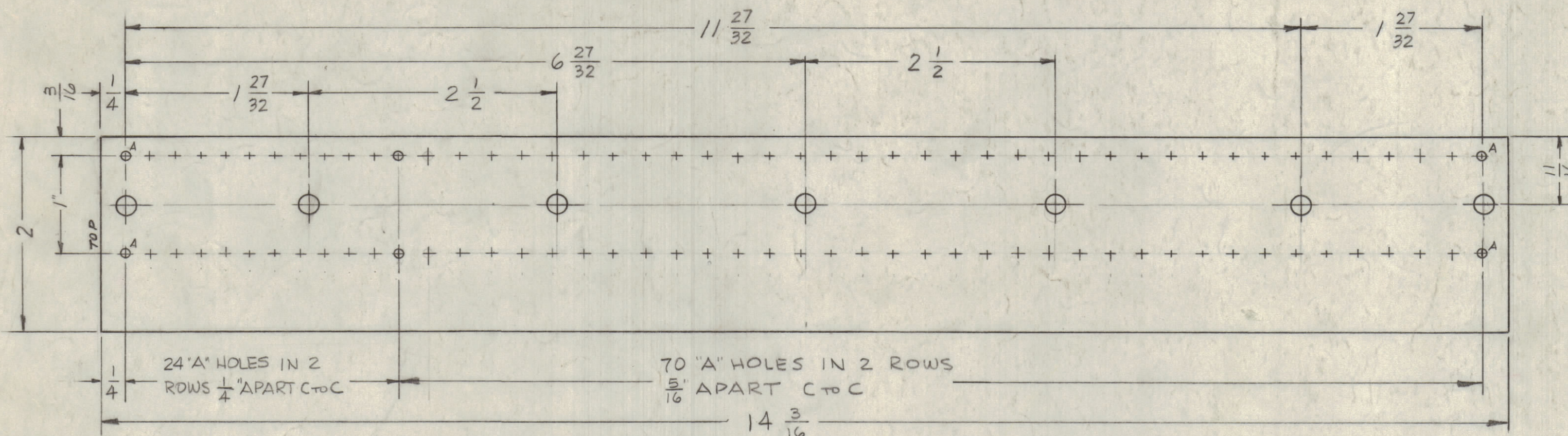
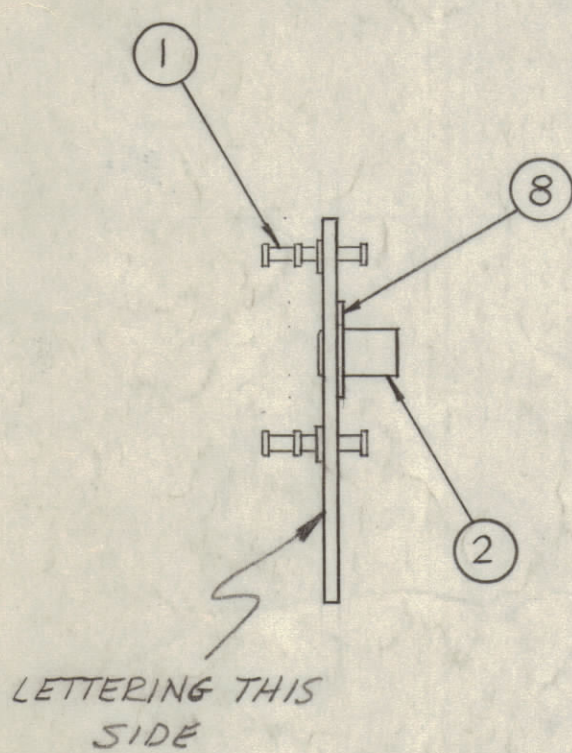


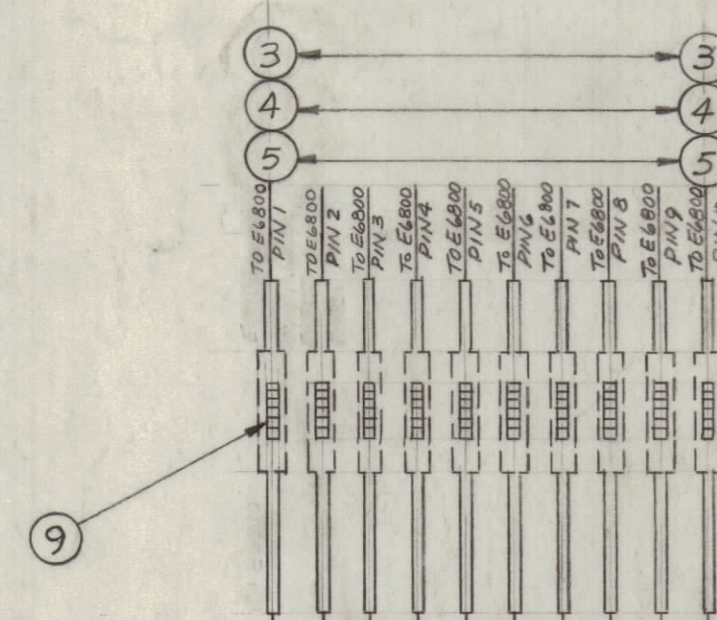
A-.078 DIA. 94 REQ'D.
B-.189 DIA. 7 REQ'D.



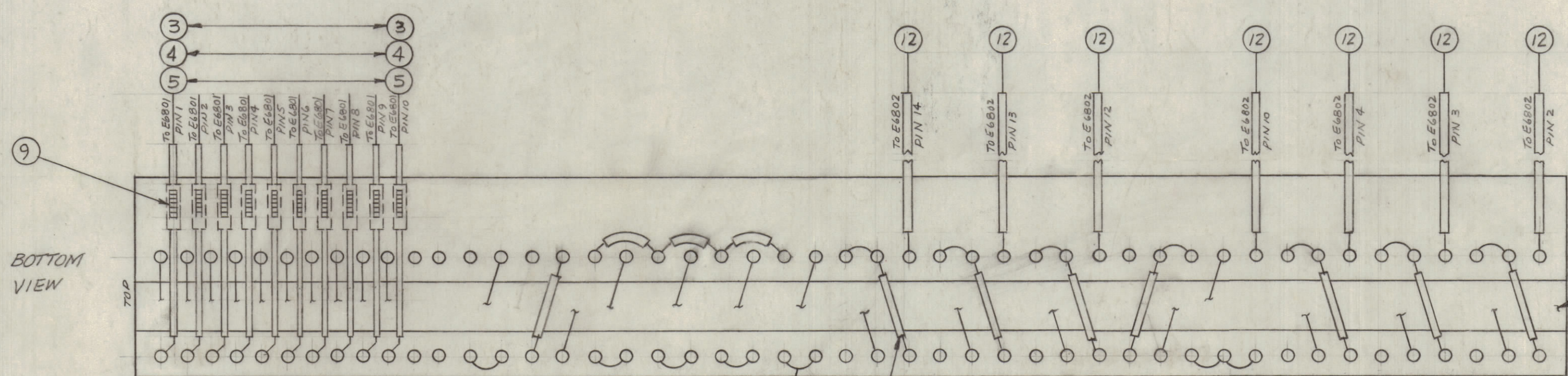
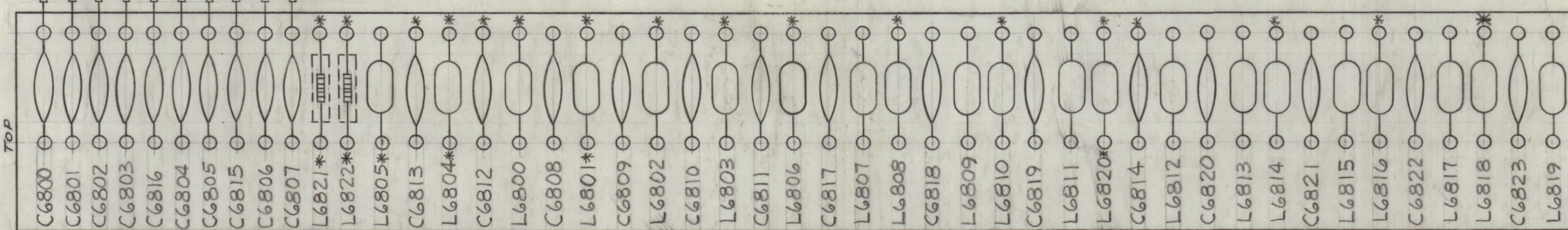
STAGE-1 MACHINING (A-2232-1)
MATERIAL - 1/16 THICK, XXXP, PHENOLIC, NATURAL



STAGE-3
SUB-ASSY. (A-2232-3)



TOP VIEW



BOTTOM VIEW

NOTICE TO PERSONS RECEIVING THIS DRAWING

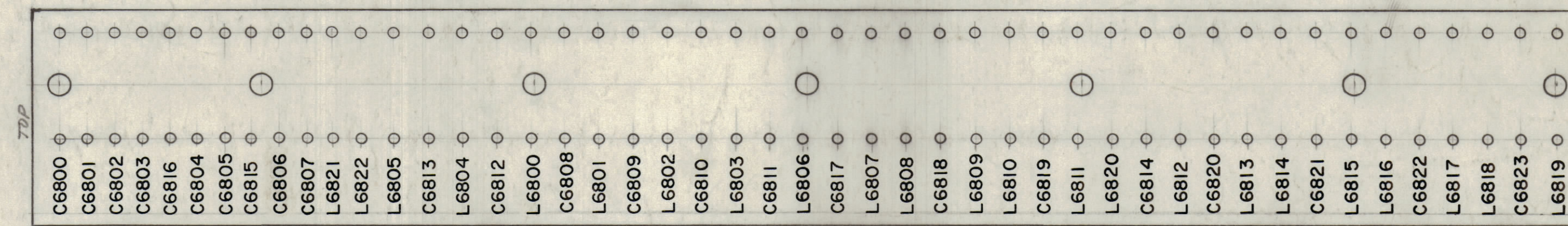
THE TECHNICAL MATERIEL CORPORATION claims proprietary right in the material disclosed herein. This drawing is issued in confidence or engineering information only and may not be reproduced or used to manufacture anything shown herein without permission from THE TECHNICAL MATERIEL CORPORATION to the user. This drawing is loaned for mutual assistance and is subject to recall at any time.

Property of:
THE TECHNICAL MATERIEL CORPORATION
MAMARONECK, NEW YORK

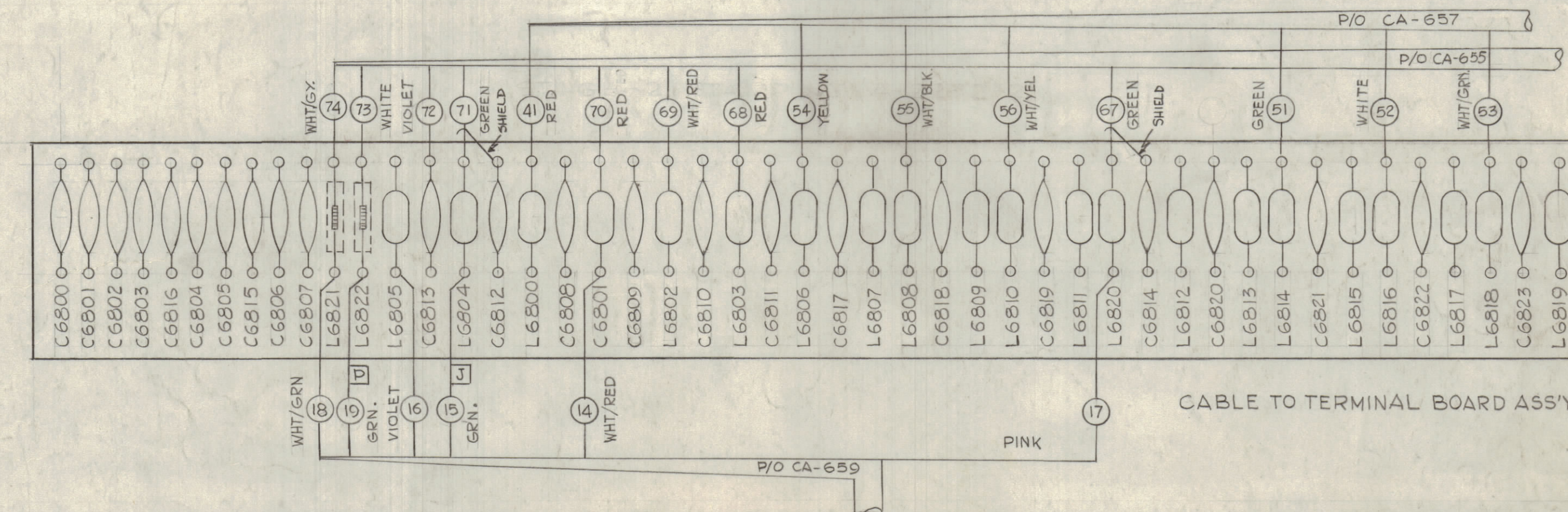
STAGE-4 ELECTRICAL ASSY. (A-2232-4)

NOTE -
* DO NOT SOLDER

ALL LETTERING TO BE 1/8 HIGH BLACK GOTHIC
MARKING PROCESS: AS PER TMC SPECIFICATION S-727



STAGE-2 STAMPING (A-2232-2)



CABLE TO TERMINAL BOARD ASSY.

REQ. NO.	ITEM	PART NO.	DESCRIPTION	SYMBOL
6	15	CM 15B511N	CAPACITOR, MICA, FIXED	
12	14	CL-270-10	COIL, MOLDED	
3	13	CC-100-16	CAPICATOR, CERAMIC, FIXED	
X	12	MWC 22(7)UB	WIRE, INSULATED	GREY
X	11	WL-100-7	WIRE, BUSS (SIZE 22)	
X	10	BS-100	SOLDER, SOFT	
132	9	CI-120-1	CORE, TOROID, BEAD TYPE	L6821 L6822
1	8	MS-2754	STRIP, TERMINAL, GROUNDING	
9	7	CL-140-1	COIL, MOLDED	
15	6	CC-100-37	CAPICATOR, CERAMIC, FIXED	
X	5	WL-100-5	WIRE, BUSS (SIZE 18)	
X	4	PX-370-16-0	INSULATION, SLEEVING	BLACK
X	3	PX-370-9-0	INSULATION, SLEEVING	BLACK
7	2	TE-108-1	STAND OFF, RIVET TYPE	
94	1	TE-168-4-B	TERMINAL, MINIATURE	

L6806 TO L6819
L6812 TO L6814
L6813 TO L6820

L6800 TO L6805
L6812 TO L6813
L6814 TO L6820

L6817 TO L6819
L6821 TO L6823

SYM	ZONE	DESCRIPTION	DATE	CH. NO.	DRAFTS	CHECKER	ENG. APP.
A	BZ	ITEM #6 WAS CC-100-32	9-28-63	10,011	BO	WJ	WJ

UNLESS OTHERWISE SPECIFIED:
DIMENSIONS ARE IN INCHES
TOLERANCES ON
FRACTIONS ± 1/64 DECIMALS ± .005 ANGLES ± 1/2°

SCALE
MAXIMUM ALLOWABLE TOLERANCES HAVE BEEN DETERMINED AND ANY DEVIATIONS WILL BE CAUSE FOR REJECTION.
REMOVE ALL BURRS & SHARP EDGES

REQ. PER UNIT	MODEL	SECTION	ASSY. NO.	DATE
1	SBS-1			11-16-61

DRAWN	CHECKED	FINAL APPROVAL
80	WJ	WJ

TYPE & TEMPER. HEAT TREAT. SPEC. FINISH & SPEC. NO. ELEC. DES. APP. MECH. DES. APP. SHEET OF

A-2232
A