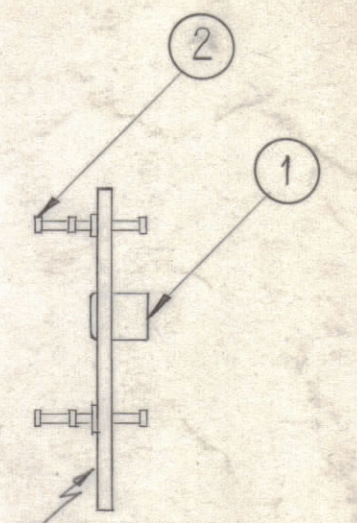
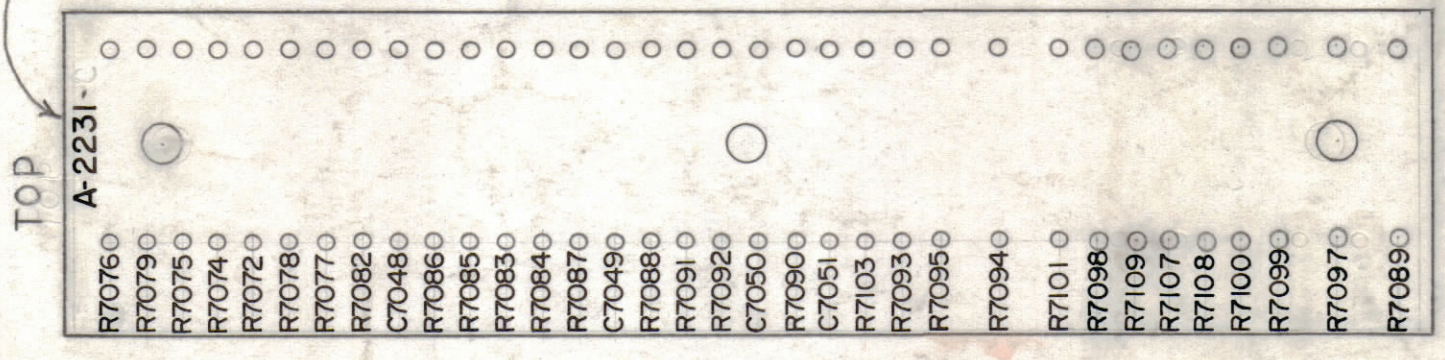
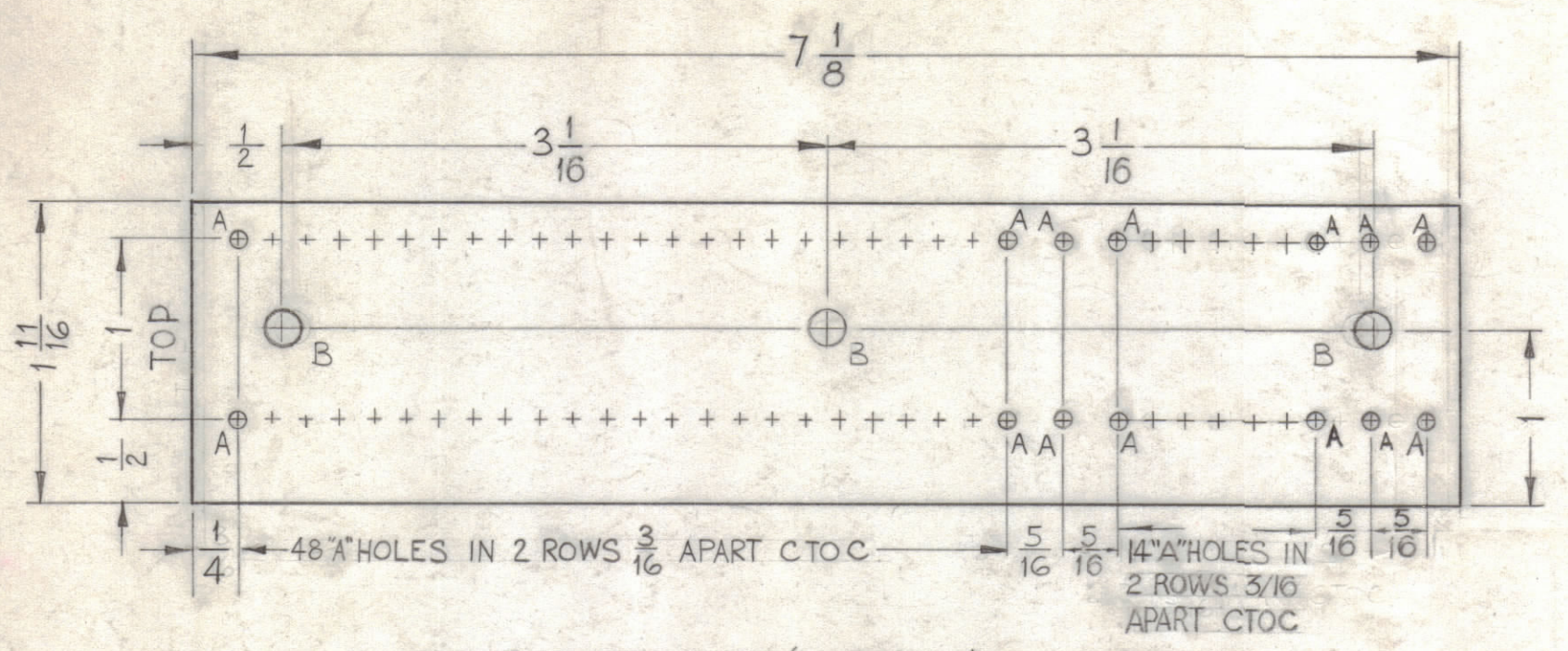


A ~ .078 DIA. 68 REQ.
 B ~ .189 DIA. 3 "

ALL LETTERING TO BE $\frac{3}{32}$ HIGH BLACK LUSTERLESS GOTHIC
 (MARKING PROCESS: AS PER TMC SPECIFICATION S-722 EQUIVALENT)

MARK TMC NO. W/LATEST REVISION LETTER.

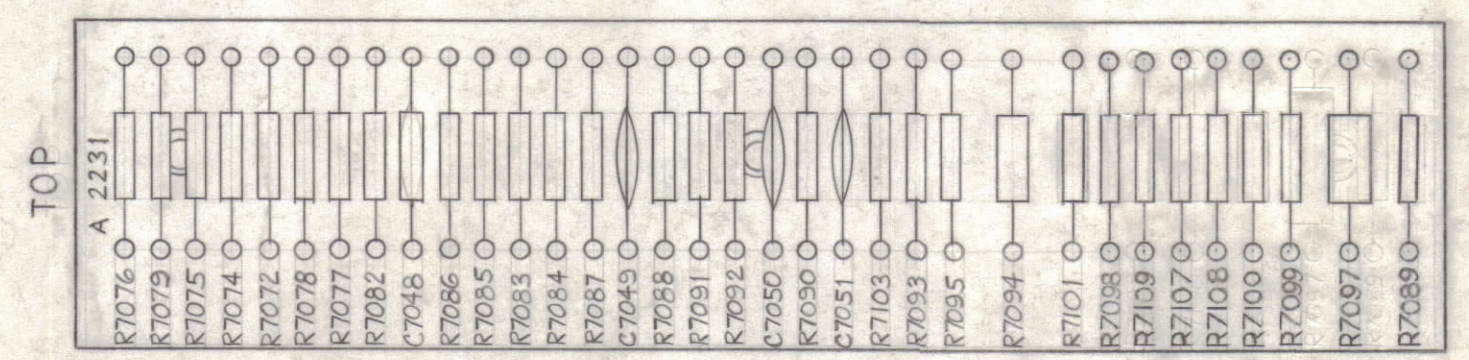


STAGE 1 - MACHINING (A-2231-1).
 MATERIAL ~ $\frac{1}{16}$ THICK, XXXP, PHENOLIC, FINISH ~ NATURAL

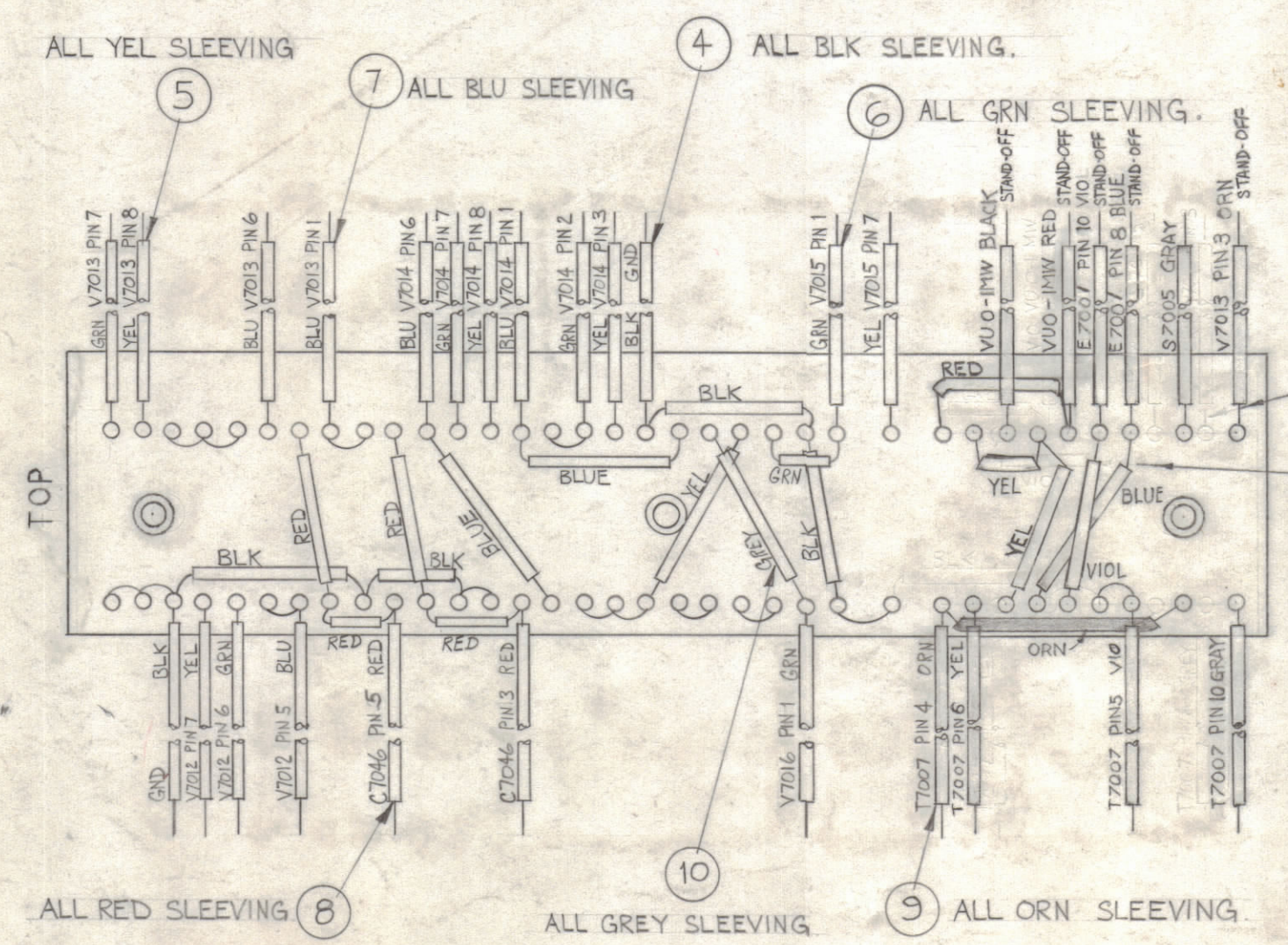
STAGE 2 - STAMPING (A-2231-2).

STAGE 3 - SUB-ASSY (A-2231-3)

TOP VIEW



BOTTOM VIEW



NOTE:
 ALL SLEEVING TO BE $3\frac{1}{4}$ " LONG.
 ALL BUSS-WIRE TO BE $\frac{1}{2}$ " LONGER.

1	32	RC 32 GF 331J	RESISTOR FIXED COMP.	R7094
1	31	RC 20 GF 362J	RESISTOR FIXED COMP.	R7109
2	30	RC 20 GF 910J	RESISTOR FIXED COMP.	R7107 R7108
X	29	BS-100	SOLDER, SOFT	
3	28	CC-100-24	CAPACITOR, FIXED, CERAMIC DISK	
1	27	CM100-10	CAPACITOR, FIXED, MICA	C7048
1	26	DELETED	RESISTOR FIXED COMP.	R7089
1	25	RC 42 GF 561J	RESISTOR, FIXED, COMP.	R7097
2	24	RC 20 GF 472J		R7098 R7101
2	23	RC 20 GF 331J		R7099 R7100
2	22	RC 20 GF 474J		R7093 R7095
2	21	RC 20 GF 470J		R7090 R7103
1	20	RC 20 GF 392J		R7091
2	19	RC 20 GF 393J		R7087 R7092
2	18	RC 20 GF 105J		R7083 R7088
3	17	RC 20 GF 333J		R7082 R7085
1	16	RC 20 GF 123J		R7078
1	15	RC 20 GF 563J		R7072
1	14	RC 20 GF 471J		R7074
3	13	RC 20 GF 103J		
3	12	RC 20 GF 102J	RESISTOR, FIXED, COMP.	
X	11	PX-104-9-.022	SLEEVING, INSULATION.	VIOLET
X	10	-7-		GREY
X	9	-8-		ORANGE
X	8	-3-		RED
X	7	-6-		BLUE
X	6	-4-		GREEN
X	5	-2-		YELLOW
X	4	PX-104-1-.022	SLEEVING, INSULATION	BLACK
X	3	WL-100-8	WIRE-BUSS	
68	2	TE-168-4-B	TERMINAL, MINIATURE	
3	1	TE-108-1	STANDOFF, RIVET TYPE	

STAGE 4 - ELECTRICAL ASSY (A-2231-4).

E	BUILD UP UPDATED	2-27-67	17850	LHD	CP	
D	ITEM 27 WAS CC-100-31	3-11-64	10803	A.M.	@	282
C	ITEM 23 WAS RC20GF331K	1/16/64	10676			
B	ITEM 24 WAS RC20GF472K	5-25-63	10047	DD		
A	ITEM 31 & 30 WERE RC20GF362K & 910K	8-20-62	7080	SG		
A	ITEM 17 QUAN. WAS 2 & ADDED R7089, 26 WAS RC 20GF 155K SYN R7089					

SYM	ZONE	DESCRIPTION	DATE	CH. NO.	DRAFTS	CHECKER	ENG. APP.
UNLESS OTHERWISE SPECIFIED:							
DIMENSIONS ARE IN INCHES							
TOLERANCES ON							
FRACTIONS ± 1/64 DECIMALS ± .005 ANGLES ± 1/2°							
SCALE							
MAXIMUM ALLOWABLE TOLERANCES HAVE BEEN DETERMINED AND ANY DEVIATIONS WILL BE CAUSE FOR REJECTION. REMOVE ALL BURRS & SHARP EDGES							

1	HFA-1	AUDIO		7-26-62
REQ. PER UNIT	MODEL	SECTION	ASS'Y. NO.	DATE
USED ON				

REG. ITEM	PART NO.	FAIOLA	DESCRIPTION	SYMBOL
THE TECHNICAL MATERIEL CORP. MAMARONECK, NEW YORK				
STOCK SIZE				
TERMINAL BOARD & COMPONENT ASS'Y (CHANNEL B)				
MATERIAL				
DRAWN: <i>M.P. Hoo</i> CHECKED: <i>BP</i> FINAL APPROVAL				
TYPE & TEMPER HEAT TREAT. SPEC.				
G.R.F. A-2231 E				
FINISH & SPEC. NO.				
ELEC. DES. APP. MECH. DES. APP. SHEET OF				