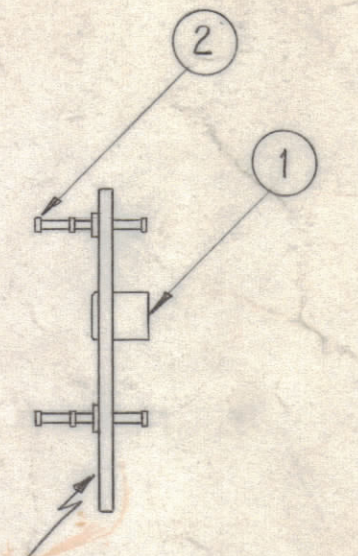
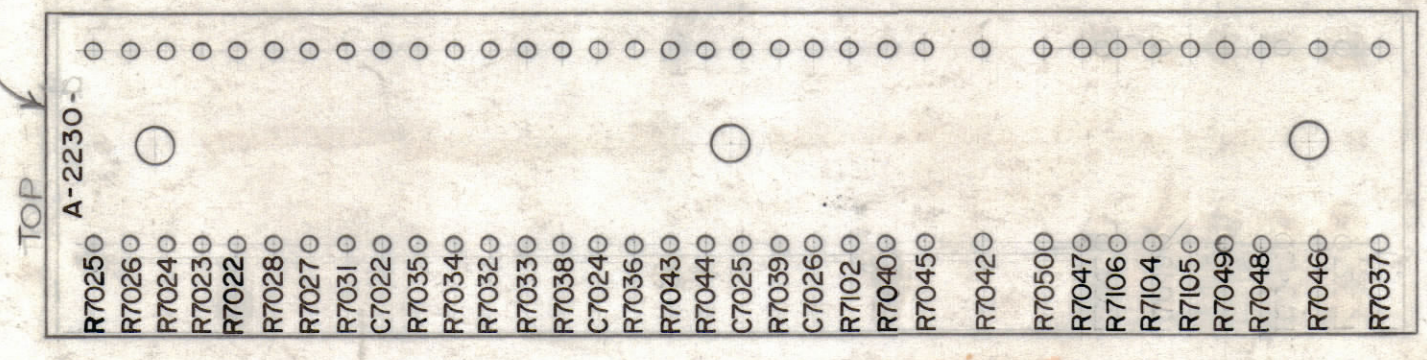
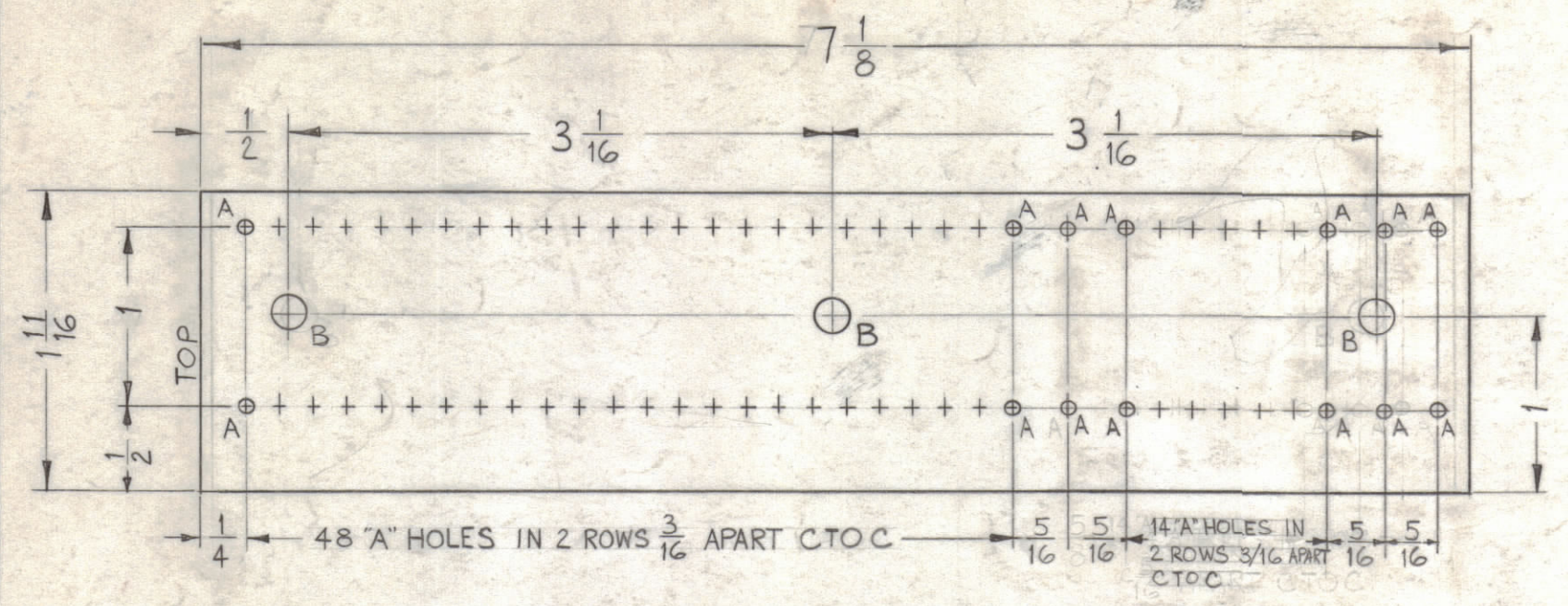


A ~ .078 DIA. 68 REQ.
 B ~ .189 DIA. 3 "

A-2230 E

ALL LETTERING TO BE $\frac{3}{32}$ HIGH BLACK LUSTERLESS GOTHIC
 (MARKING PROCESS: AS PER TMC SPECIFICATION S-727)

MARK TMC NO. W/LATEST REVISION LETTER.

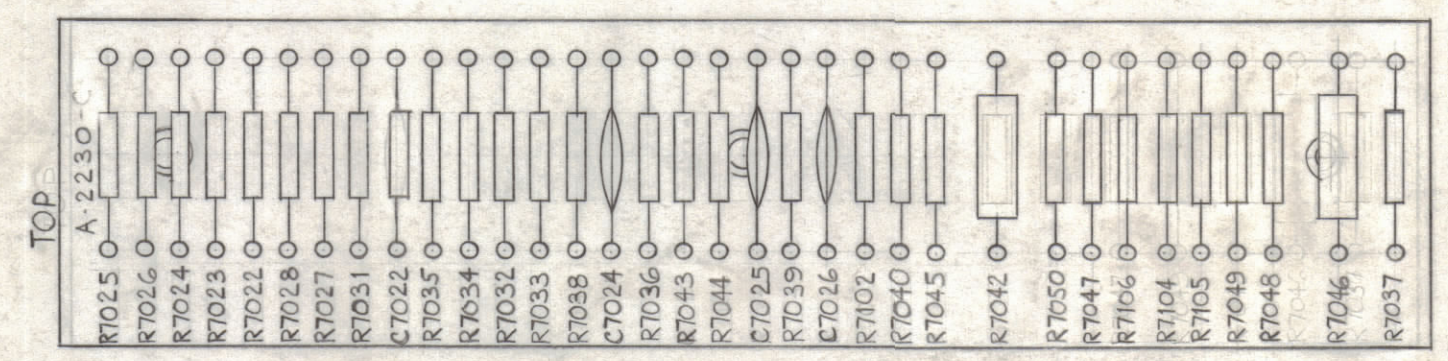


STAGE 1 - MACHINING (A-2230-1).
 MATERIAL - $\frac{1}{16}$ THICK, XXXP. PHENOLIC, FINISH - NATURAL.

STAGE 2 - STAMPING (A-2230-2).

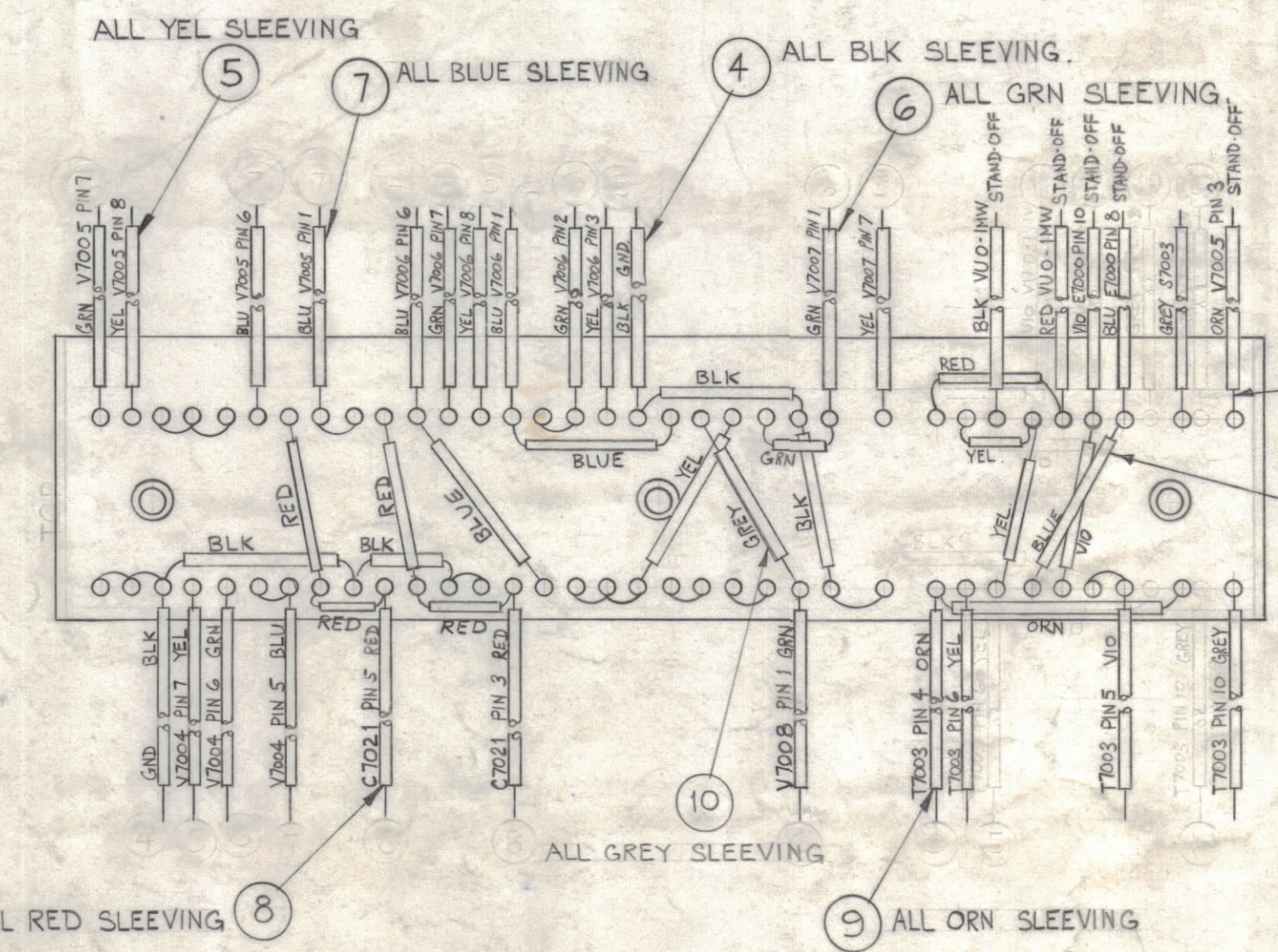
STAGE 3 - SUB-ASS'Y (A-2230-3).

TOP VIEW



NOTE:
 ALL SLEEVING TO BE $3\frac{1}{4}$ " LONG.
 ALL BUSS-WIRE TO BE $\frac{1}{2}$ " LONGER.

BOTTOM VIEW



STAGE 4 - ELECTRICAL ASS'Y (A-2230-4).

1	32	RC32GF331J	RESISTOR, FIXED COMP.	R7042
1	31	RC20GF362J	RESISTOR, FIXED COMP.	R7106
2	30	RC20GF910J	RESISTOR, FIXED COMP.	R7104 7105
X	29	BS-100	SOLDER, SOFT	
3	28	CC-100-24	CAPACITOR, FIXED, CERAMIC DISK	
1	27	CM100-10	CAPACITOR, FIXED, CERAMIC DISK	C7022
	26	DELETED	FIXED COMP	
1	25	RC42GF561J	RESISTOR, FIXED, COMP	R7046
2	24	RC20GF472J		R7047 7050
2	23	RC20GF331J		R7048 7049
2	22	RC20GF474J		R7040 7045
2	21	RC20GF470J		R7039 R7102
1	20	RC20GF392J		R7043
2	19	RC20GF393J		R7038 7044
2	18	RC20GF105J		R7032 7036
3	17	RC20GF333J		R7031 7034
1	16	RC20GF123J		R7028
1	15	RC20GF563J		R7022
1	14	RC20GF471J		R7023
3	13	RC20GF103J		
3	12	RC20GF102J	RESISTOR, FIXED, COMP.	
X	11	PX-104-9-.022	SLEEVING, INSULATION	VIOLET
X	10	-7-		GREY
X	9	-8-		ORANGE
X	8	-3-		RED
X	7	-6-		BLUE
X	6	-4-		GREEN
X	5	-2-		YELLOW
X	4	PX-104-1-.022	SLEEVING, INSULATION	BLACK
X	3	WL-100-8	WIRE, BUSS	
68	2	TE-168-4-B	TERMINAL, MINIATURE	
3	1	TE-108-1	STANDOFF, RIVET TYPE	

E	BUILD UP UPDATED	2/27/67	17850	LFW	9/12/67
D	ITEM 23 WAS RC20GF331K ITEM 24 WAS RC20GF472K	1/8/69	10676		
C	E2 ITEM (27) WAS CC-100-31	12/23/63	10547		
B	E1 ITEM 31 & 30 WERE RC20GF302K & 910K	9-25-63	10047		
A	QUAN. ON ITEM 17 WAS 24 SYM R7037 ADDED; 26 WAS RC20GF133K SYM R7037	8-20-62	7080	SG	

SYM	ZONE	DESCRIPTION	DATE	CH. NO.	DRAFTS	CHECKER	ENG. APP.
UNLESS OTHERWISE SPECIFIED:			SCALE				
DIMENSIONS ARE IN INCHES			MAXIMUM ALLOWABLE TOLERANCES HAVE BEEN DETERMINED AND ANY DEVIATIONS WILL BE CAUSE FOR REJECTION. REMOVE ALL BURRS & SHARP EDGES				
TOLERANCES ON FRACTIONS ± 1/64			DECIMALS ± .005			ANGLES ± 1/2°	

1	HFA-1	AUDIO		7-26-62
REQ. PER UNIT	MODEL	SECTION	ASS'Y. NO.	DATE
	USED ON			

REQ.	ITEM	PART NO.	T. FAIOLA	DESCRIPTION	SYMBOL
THE TECHNICAL MATERIEL CORP. MAMARONECK, NEW YORK					
STOCK SIZE					
MATERIAL					
TERMINAL BOARD & COMPONENT ASS'Y (CHAN.A.)					
DRAWN		CHECKED		FINAL APPROVAL	
TYPE & TEMPER		HEAT TREAT. SPEC.		A-2230	
FINISH & SPEC. NO.		ELEC. DES. APP.		MECH. DES. APP.	
		SHEET		OF	