

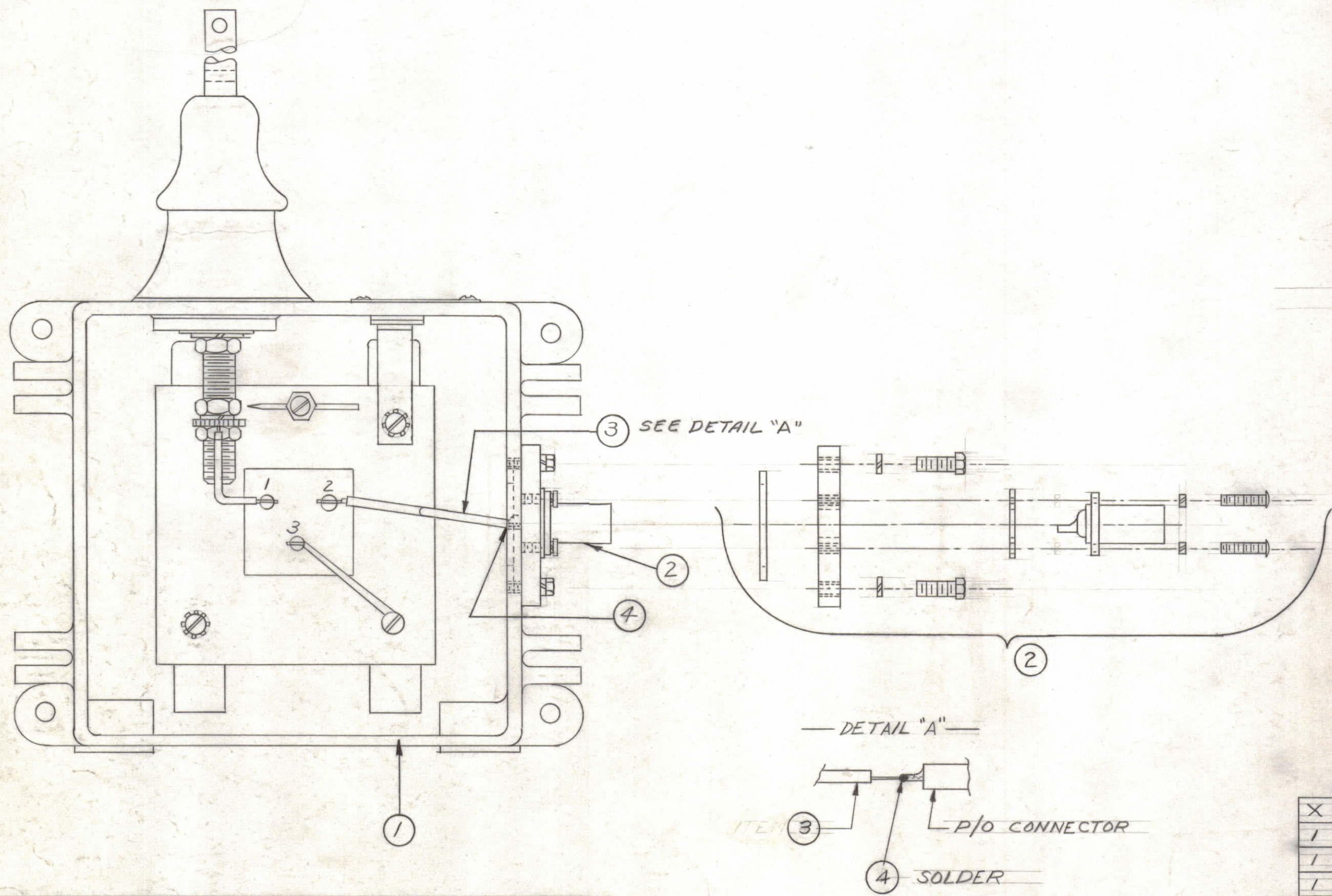
MODEL	ITEM 1	ITEM 2	ITEM 3
VRA-5/AX-259-5	A-2169	AX-259-5	FP-192
VRA-6/AX-259-5	A-2169	AX-259-5	FP-192
VRA-6/AX-281-2	A-2169	AX-281-2	FP-192
VRA-5/AX259-2	A-2169	AX-259-2	FP-192

A-2228 A

NOTICE TO PERSONS RECEIVING THIS DRAWING

THE TECHNICAL MATERIEL CORPORATION claims proprietary right in the material disclosed hereon. This drawing is issued in confidence for engineering information only and may not be reproduced or used to manufacture anything shown hereon without permission from THE TECHNICAL MATERIEL CORPORATION to the user. This drawing is loaned for mutual assistance and is subject to recall at any time.

Property of:
THE TECHNICAL MATERIEL CORPORATION
 MAMARONECK, NEW YORK



MODEL NO. SHALL BE AS FOLLOWS

VRA-5 / AX-259-5
 BASIC MODEL (ITEM 1) CONNECTOR AND FLANGE ASS'Y (ITEM 2)

REQ.	ITEM	PART NO.	DESCRIPTION	SYMBOL
X	4	BS-100	SOLDER, SOFT	A
1	3	SEE CHART	LEAD, ELEC., XFMR, TO CONNECTOR	
1	2	SEE CHART	CONNECTOR, / FLANGE ASSEMBLY	
1	1	SEE CHART	SUB-ASS'Y, VRA NNA UNIT	

THE TECHNICAL MATERIEL CORP.				
MAMARONECK, NEW YORK				
STOCK SIZE				
MATERIAL				
TYPE & TEMPER				
HEAT TREAT. SPEC.				
FINISH & SPEC. NO.				
			FINAL ASSEMBLY, MODEL VRA	
			W/CONNECTOR / FLANGE ASSEMBLY	
DRAWN		CHECKED		FINAL APPROVAL
G. SENCEN		RUZZO		SPM
			A-2228	
			SHEET OF	
			1	

SYM	ZONE	DESCRIPTION	DATE	CH. NO.	DRAFTS	CHECKER	ENG. APP.
A		ADDED TO CHT. VRA-5/AX259-2	5-10-72	20685	GE	EP	Ⓢ

UNLESS OTHERWISE SPECIFIED:
 DIMENSIONS ARE IN INCHES
 TOLERANCES ON FRACTIONS ± 1/64 DECIMALS ± .005 ANGLES ± 1/2°

SCALE
 MAXIMUM ALLOWABLE TOLERANCES HAVE BEEN DETERMINED AND ANY DEVIATIONS WILL BE CAUSE FOR REJECTION.
 REMOVE ALL BURRS & SHARP EDGES

REQ. PER UNIT	MODEL	SECTION	ASS'Y. NO.	DATE
	VRA			