

THE CONTENTS OF THIS DRAWING ARE THE EXCLUSIVE PROPERTY OF THE TECHNICAL MATERIEL CORP. ITS UNAUTHORIZED USE OR REPRODUCTION IN WHOLE OR IN PART IS STRICTLY FORBIDDEN.

REQ. PER UNIT

2

MODEL

5B5-1

USED ON

ASS'Y. NO.

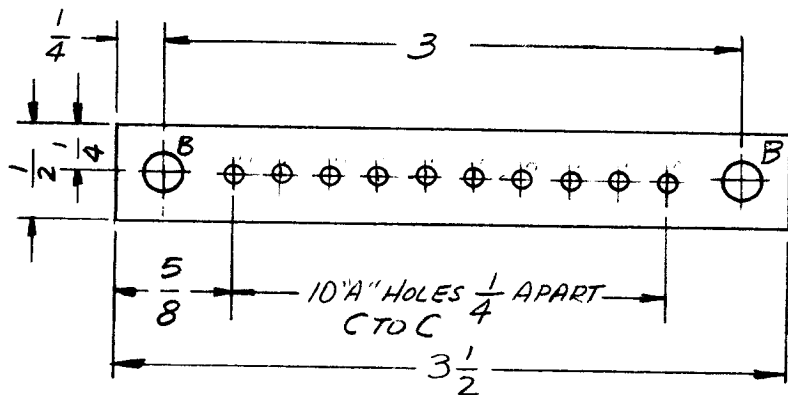
DATE

11-13-61

A-2235

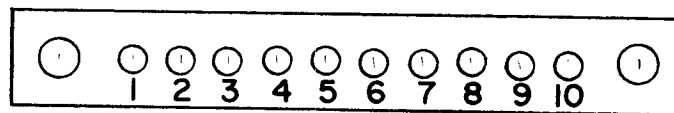
A

A-.073 DIA 10 REQ'D.
B-.189 DIA 2 REQ'D.

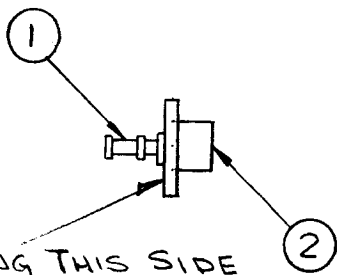


STAGE 1 MACHINING (A-2235-1)
MATL. 1/16 THK, XXXP, PHENOLIC, NATURAL

ALL LETTERING TO BE 1/8 HIGH
BLACK GOTHIC.
MARKING PROCESS: AS PER TMC SPECIFICATION S 727



STAGE-2 STAMPING (A-2235-2)



LETTERING THIS SIDE

STAGE-3 ASSEMBLY
(A-2235-3)

REF: A-2232 TB ASSY. (8)

2	2	TE-108-3	STAND OFF, RINET TYPE	
10	1	TE-168-4-B	TERMINAL, MINATURE	
REQ.	ITEM	PART NO.	DESCRIPTION	SYMBOL

THE TECHNICAL MATERIEL CORP.
MAMARONECK, NEW YORK

TERMINAL BOARD ASS'Y.

A	ITEM ② WAS TE-108-7	3-6-62	6474	LL	JK	JK
SYM	DESCRIPTION	DATE	CH. NO.	DRAFTS	CHECKER	ENG. APP.

UNLESS OTHERWISE SPECIFIED:

DIMENSIONS ARE IN INCHES
TOLERANCES ON

FRAC. ± 1/64 DEC. ± .005 ANGLES ± 1/2°

A

SCALE:

MAXIMUM ALLOWABLE TOLERANCES HAVE BEEN DETERMINED AND ANY DEVIATIONS WILL BE CAUSE FOR REJECTION. REMOVE ALL BURRS AND SHARP EDGES

TYPE & TEMPER HEATTREAT. SPEC.

DRAWN

CHECKED

FINAL APPROVAL

FINISH & SPEC. NO.

ELEC. DES. APP. MECH. DES. APP.

A-2235

A

THE CONTENTS OF THIS DRAWING ARE THE EXCLUSIVE PROPERTY OF THE TECHNICAL MATERIEL CORP. ITS UNAUTHORIZED USE OR REPRODUCTION IN WHOLE OR IN PART IS STRICTLY FORBIDDEN.

REQ. PER UNIT

1

TER 250/300 U

USED ON

MODEL

ASS'Y. NO.

DATE

11-4-61

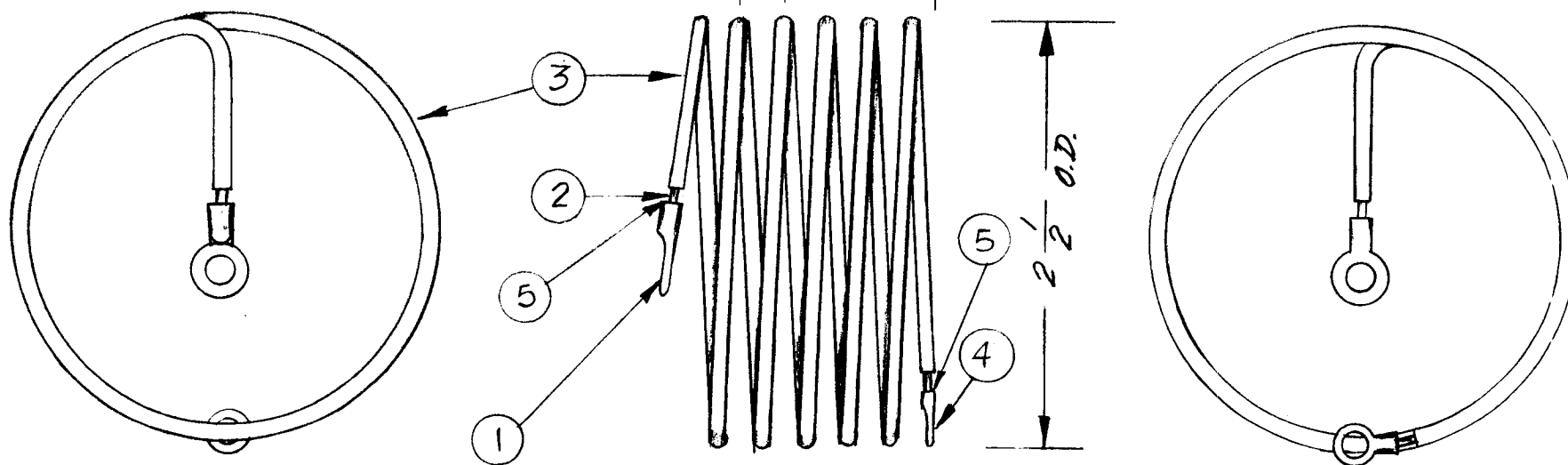
A-2238

A

PROCEDURE

Elec. Specs.
1.6uh \pm .1uh @ 7.9 MCS

- Slip item (3) (sleeving) over item (2) (wire).
- Wind on 2" form w/ 1/4 c.c. spacing as shown. (5 1/2 turns)
- Assemble items 1 & 4 in position indicated.



X	5	BS-100	SOLDER, SOFT
1	4	TE-141-1	TERMINAL, SOLDERLESS
36"	3	PX-370-8-7	INSULATION SLEEVING
37"	2	WL-100-1	WIRE, BUSS. SIZE 10
1	1	TE-141-4	TERMINAL, SOLDERLESS

REQ.	ITEM	PART NO.	DESCRIPTION	SYMBOL
STOCK SIZE				
MATERIAL				
			THE TECHNICAL MATERIEL CORP. MAMARONECK, NEW YORK	
			CL-280 ASS'Y (COIL, RF, FIXED)	
		DRAWN: <i>wh</i> CHECKED: <i>WDe</i> FINAL APPROVAL: <i>WDe</i>		
		ELEC. DES. APP. <i>aa</i> MECH. DES. APP.		A-2238

A	ITEM (3) WAS PX-370-8, ITEM (5) ADDED	11-27-61	5942	G.D.L.	<i>[Signature]</i>	<i>[Signature]</i>
	ITEM (2) WAS WI-100-1- CABLE, MULTI-CORD TITLE WAS AC-140 ASS'Y.					
SYM	DESCRIPTION	DATE	CH. NO.	DRAFTS	CHECKER	ENG. APP.

UNLESS OTHERWISE SPECIFIED:
DIMENSIONS ARE IN INCHES
TOLERANCES ON
FRAC. \pm 1/64 DEC. \pm .05 ANGLES \pm 1/20

SCALE:
MAXIMUM ALLOWABLE TOLERANCES HAVE BEEN DETERMINED AND ANY DEVIATIONS WILL BE CAUSE FOR REJECTION.
REMOVE ALL BURRS AND SHARP EDGES

THE CONTENTS OF THIS DRAWING ARE THE EXCLUSIVE PROPERTY OF THE TECHNICAL MATERIEL CORP. ITS UNAUTHORIZED USE OR REPRODUCTION IN WHOLE OR IN PART IS STRICTLY FORBIDDEN.

REQ. PER UNIT

USED ON

MODEL

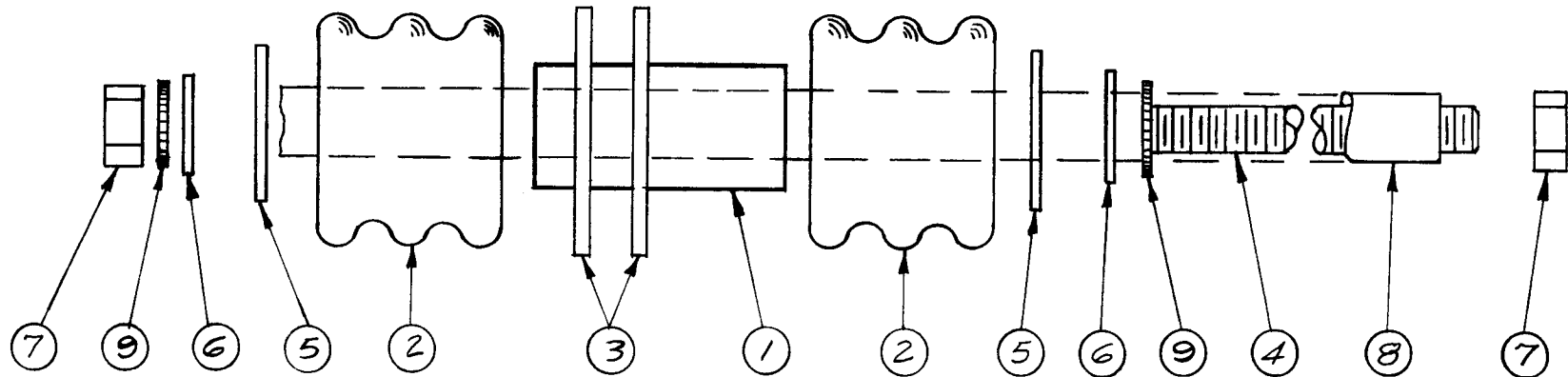
ASS'Y. NO.

DATE

1 AX-236, AX-238

12-18-61

A-2250



2	9	LWE10MRN	LOCKWASHER, EXT.
2	8	PX-370-4-7	TUBING, TEFLON 3" LONG
2	7	NTH1032BN12	NUT, HEX
2	6	FW10HBN	WASHER, FLAT
2	5	WA-109-56	WASHER, FIBER
1	4	SM1032BN4.00	ROD THREADED, 4" LONG
2	3	GA-117	GASKET
2	2	NS-128-1	BUSHING, INSULATED, FEMALE
1	1	PX-562-2	BUSHING, TEFLON

SYM	DESCRIPTION	DATE	CH. NO.	DRAFTS	CHECKER	ENG. APP.	REQ. ITEM	PART NO.	DESCRIPTION	SYMBOL		
							THE TECHNICAL MATERIEL CORP. MAMARONECK, NEW YORK AX-314 ASSY (FEEDTHRU, INSULATED)					
							STOCK SIZE					
							MATERIAL					
UNLESS OTHERWISE SPECIFIED: DIMENSIONS ARE IN INCHES TOLERANCES ON FRAC. ± 1/64 DEC. ± .005 ANGLES ± 1/2°							SCALE:		W.S.		[Signature]	
							MAXIMUM ALLOWABLE TOLERANCES HAVE BEEN DETERMINED AND ANY DEVIATIONS WILL BE CAUSE FOR REJECTION. REM VE ALL BURRS AND SHARP EDGES		TYPE & TEMPER		HEATTREAT.SPEC.	
							FINISH & SPEC. NO.		ELEC. DES. APP.		MECH. DES. APP.	
											A-2250	

REQ. PER UNIT	USED ON			A- 2255
	MODEL	ASS'Y. NO.	DATE	
1	GPT-10K	AX107		

THIS IS A REFERENCE DRAWING
ASSIGNED FOR PROVISIONING
PURPOSES AND DOES NOT
REQUIRE A PICTORIAL

REQ.	ITEM	PART NO.	DESCRIPTION				SYMBOL
			THE TECHNICAL MATERIEL CORP. MAMARONECK. NEW YORK				
			STOCK SIZE				
			PNL ASSY, WINDOW (SINGLE)				
			MATERIAL				
SYM	DESCRIPTION	DATE	CH. NO.	DRAFTS	CHECKER	ENG. APP.	
UNLESS OTHERWISE SPECIFIED DIMENSIONS ARE IN INCHES AND INCLUDE CHEMICALLY APPLIED OR PLATED FINISHES		SCALE					
DECIMALS .X ± .05 .XX ± .01 .XXX ± .005		FRACTIONS ± 1/64 ANGLES ± 0° 30'		TOLERANCES			
		CODE					
		TYPE & TEMPER	HEAT TREAT. SPEC.	DRAWN		CHECKED	FINAL APPROVAL
		FINISH & SPEC. NO.		ELEC. DES. APP.	MECH. DES. APP.	A- 2255	

REQ. PER UNIT	USED ON			A - 2256
	MODEL	ASS'Y. NO.	DATE	
1	GPT-10K	AM122		
1	GPT-40K	AM115		
1	GPT-40K	AT106		

THIS IS A REFERENCE DRAWING
 ASSIGNED FOR PROVISIONING
 PURPOSES AND DOES NOT
 REQUIRE A PICTORIAL

REQ.	ITEM	PART NO.	DESCRIPTION				SYMBOL
			THE TECHNICAL MATERIEL CORP. MAMARONECK, NEW YORK				
			WINDOW FRAME ASSY (DOUBLE)				
			MATERIAL				
			TYPE & TEMPER HEAT TREAT. SPEC.				
			FINISH & SPEC. NO.				
			ELEC. DES. APP. MECH. DES. APP.				A - 2256

SYM	DESCRIPTION	DATE	CH. NO.	DRAFTS	CHECKER	ENG. APP.

UNLESS OTHERWISE SPECIFIED DIMENSIONS ARE IN INCHES AND INCLUDE CHEMICALLY APPLIED OR PLATED FINISHES		SCALE
DECIMALS .X ± .05 .XX ± .01 .XXX ± .005	TOLERANCES	FRACTIONS ± 1/64 ANGLES ± 0° 30'

THE CONTENTS OF THIS DRAWING ARE THE EXCLUSIVE PROPERTY OF THE TECHNICAL MATERIEL CORP. ITS UNAUTHORIZED USE OR REPRODUCTION IN WHOLE OR IN PART IS STRICTLY FORBIDDEN.

REQ. PER UNIT

USED ON

MODEL

ASS'Y. NO.

DATE

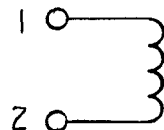
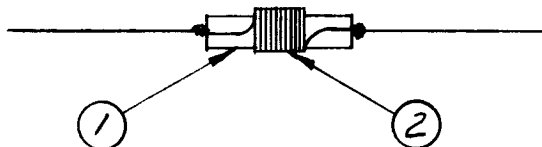
1

AFC-2

12/18/61

A-2270

WINDING DATA



1. Close wind on item 1 ,37 turns of item 2.
2. Stake leads with item 3 and solder one lead to item 1.
3. Place on comparator and remove turns until "Before Baking" tolerance is achieved. Solder lead to item 1.
4. Coat with item 4 and place in oven for 1/2 hour at 215° F.
5. Remove and cool and then repeat test for "After Baking" tolerance.
6. Reject all coils that do not comply with tolerance.
7. Measure Q with Booton Q meter Type 160 A or equivalent.

TEST SPECIFICATION

L= 17.5 uh (see note)

Q= 90 or greater (test Freq. 2.5 mcs)

NOTE: Use impedance comparator Type 1605-A to compare coil with standard coil CL-281
Before baking tolerance should be + .5%.
After baking tolerance should be + 1%.

X	5	BS-100	SOLDER, SOFT
X	4	GL-104-2	INSULEX, U-85
X	3	GL-103	CEMENT, DUCO
X	2	WI-123-37	WIRE, FORMVAR #37
I	1	CI-114	CORE, FIXED

SYM	DESCRIPTION	DATE	CH. NO.	DRAFTS	CHECKER	ENG. APP.	REQ. ITEM	PART NO.	DESCRIPTION	SYMBOL	
UNLESS OTHERWISE SPECIFIED:							THE TECHNICAL MATERIEL CORP.				
DIMENSIONS ARE IN INCHES							MAMARONECK, NEW YORK				
TOLERANCES ON							CL-281 COIL ASSEMBLY				
FRAC. ± 1/64 DEC. ± .005 ANGLES ± 1/2°							MATERIAL				
SCALE:							W. S.				
MAXIMUM ALLOWABLE TOLERANCES HAVE BEEN DETERMINED AND ANY DEVIATIONS WILL BE CAUSE FOR REJECTION.							DRAWN				
REMOVE ALL BURRS AND SHARP EDGES							CHECKED				
							FINAL APPROVAL				
							A-2270				
							FINISH & SPEC. NO.				
							ELEC. DES. APP.				
							MECH. DES. APP.				

THE CONTENTS OF THIS DRAWING ARE THE EXCLUSIVE PROPERTY OF THE TECHNICAL MATERIEL CORP. ITS UNAUTHORIZED USE OR REPRODUCTION IN WHOLE OR IN PART IS STRICTLY FORBIDDEN.

REQ. PER UNIT

USED ON

MODEL

ASS'Y. NO.

DATE

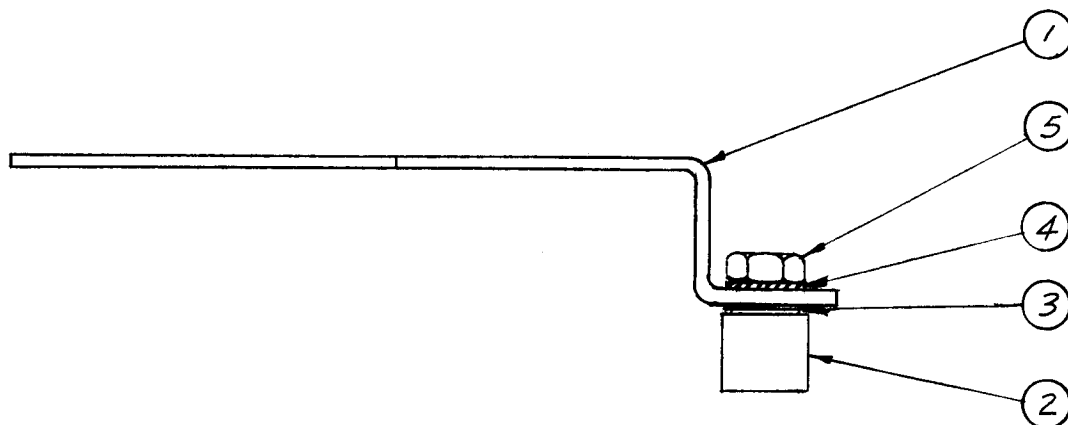
1

AX-275

12/19/20

A-2272

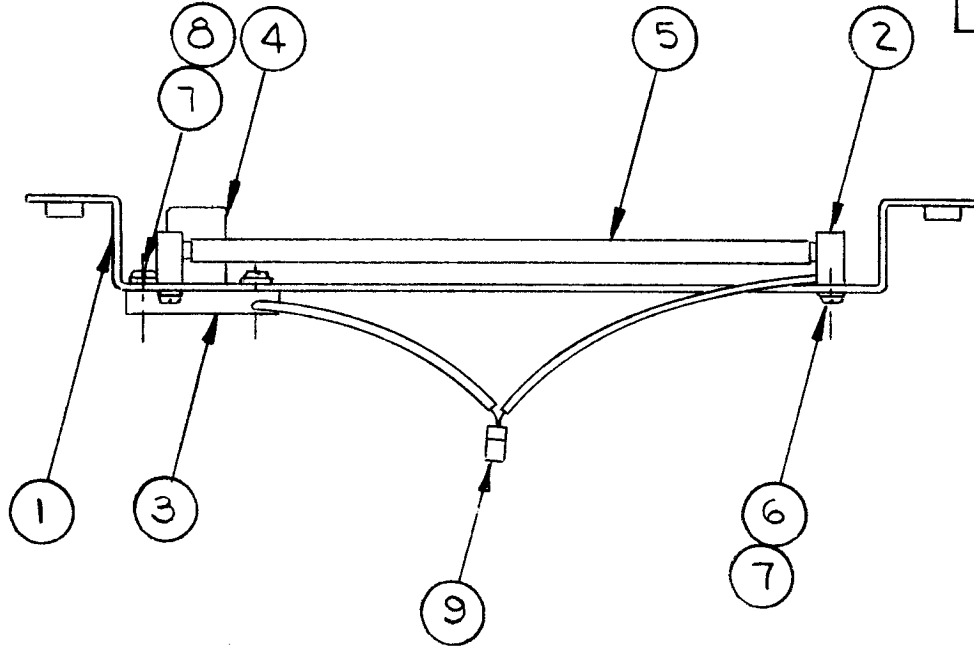
B



1	5	NTH1032BN12	NUT, HEXAGON
1	4	LWS10MRN	LOCKWASHER, SPLIT
1	3	FW10HBN	WASHER, FLAT
1	2	BB-107	BEARING, CAM FOLLOWER
1	1	MS-2501	BRACKET, IDLER GEAR ADJUST

SYM	DESCRIPTION	DATE	CH. NO.	DRAFTS	CHECKER	ENG. APP.	REQ. ITEM	PART NO.	DESCRIPTION	SYMBOL	
B	ITEM(5) WAS NTH1032BN12	1-5-63	7956						THE TECHNICAL MATERIEL CORP. MAMARONECK, NEW YORK ASSEMBLY, IDLER BEARING		
A	ITEM(5) WAS NTH1032BN12 ITEM(4) WAS LWE10MRN	12-11-62	7860								
UNLESS OTHERWISE SPECIFIED:		SCALE:					TYPE & TEMPER		HEAT TREAT. SPEC.		
DIMENSIONS ARE IN INCHES		MAXIMUM ALLOWABLE TOLERANCES HAVE BEEN DETERMINED AND ANY DEVIATIONS WILL BE CAUSE FOR REJECTION.					DRAWN		CHECKED		FINAL APPROVAL
TOLERANCES ON		REMOVE ALL BURRS AND SHARP EDGES					ELEC. DES. APP.		MECH. DES. APP.		
FRAC. ± 1/64 DEC. ± .005 ANGLES ± 1/2°							FINISH & SPEC. NO.		ELEC. DES. APP.		MECH. DES. APP.
									W.S.		
									A-2272		B

REQ. PER UNIT	USED ON			A 2276	Q
	MODEL	ASS'Y. NO.	DATE		
1	GPT-10K	AX-107	3-16-66		



1	9	NT-121-71B	NUT, WIRE
2	8	SCBP0632BN10	SCREW, MACHINE
4	7	LWE06MRN	WASHER, LOCKING, EXTERNAL
2	6	SCBP0632BN6	SCREW MACHINE
1	5	BI107	LAMP, FLUORESCENT
1	4	PO170	STARTER, FLUOR.
1	3	TS140	SOCKET, STARTER
2	2	TS141	SOCKET, LAMP FLUOR.
1	1	LD550/MS1553	BRACKET, LIGHT

Ø	ORIGINAL RELEASE FOR PRODUCTION	3-17-66	A	Jc		
SYM	DESCRIPTION	DATE	CH. NO.	DRAFTS	CHECKER	ENG. APP.
	UNLESS OTHERWISE SPECIFIED DIMENSIONS ARE IN INCHES AND INCLUDE CHEMICALLY APPLIED OR PLATED FINISHES	SCALE	---			
DECIMALS	TOLERANCES	FRACTIONS	CODE			
.X ± .05 .XX ± .01 .XXX ± .005		± 1/64 ANGLES ± 0° 30'				

REQ. ITEM	PART NO.	BUDETTI	DESCRIPTION	SYMBOL
STOCK SIZE		THE TECHNICAL MATERIEL CORP. MAMARONECK. NEW YORK		
MATERIAL		LIGHT, CHASSIS, ASSEMBLY W/O BALLAST		
TYPE & TEMPER	HEAT TREAT. SPEC.	DRAWN	CHECKED	FINAL APPROVAL
FINISH & SPEC. NO.		JL	JL 3/16/66	[Signature]
		QA		A 2276 Q
		ELEC. DES. APP.	MECH. DES. APP.	

THE CONTENTS OF THIS DRAWING ARE THE EXCLUSIVE PROPERTY OF THE TECHNICAL MATERIEL CORP. ITS UNAUTHORIZED USE OR REPRODUCTION IN WHOLE OR IN PART IS STRICTLY FORBIDDEN.

REQ. PER UNIT

1

USED ON

MODEL

CAB-1

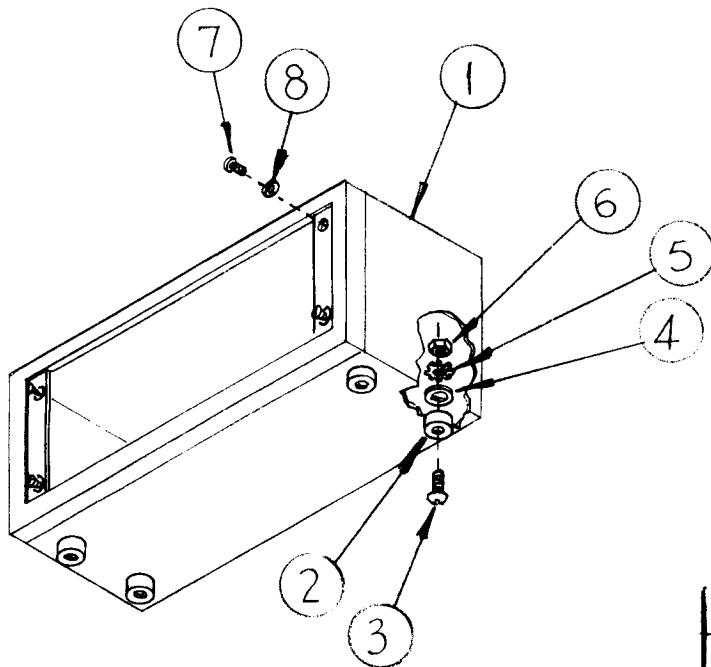
ASS'Y. NO.

DATE

1-15-62

A-2282

A



NOTE ~ Items 7 & 8 Supplied as Loose Items.

4	8	WA-101-5	WASHER, FIBRE
4	7	SCBP1032BN8	SCREW, MACHINE
4	6	NTH1032BN10	NUT, HEX.
4	5	LWE10MRN	LOCKWASHER, EXT.
4	4	FW10HBN	WASHER, FLAT
4	3	SCBP1032BN20	SCREW, MACHINE
4	2	PX-277	CASE MOUNTS
1	1	MS-1167	CABINET, ELECTRICAL, EQUIP.

SYM	DESCRIPTION	DATE	CH. NO.	DRAFTS	CHECKER	ENG. APP.	REQ.	ITEM	PART NO.	DESCRIPTION	SYMBOL
A	ITEM ⑦ WAS SCBP0832BN8 ITEM ⑧ WAS WA-101-11	5-25-62	6698	VRR.	<i>Hde</i>	<i>KWS</i>					
UNLESS OTHERWISE SPECIFIED:							THE TECHNICAL MATERIEL CORP. MAMARONECK, NEW YORK				
DIMENSIONS ARE IN INCHES							STOCK SIZE				
TOLERANCES ON							MATERIAL				
FRAC. ± 1/64 DEC. ± .005 ANGLES ± 1/20							FINAL ASSEMBLY, CAB-1				
SCALE:							D. J. Man				
MAXIMUM ALLOWABLE TOLERANCES HAVE BEEN DETERMINED AND ANY DEVIATIONS WILL BE CAUSE FOR REJECTION.							RUZZO				
REMOVE ALL BURRS AND SHARP EDGES							DRAWN				
							CHECKED				
							FINAL APPROVAL				
							A-2282				
							A				
FINISH & SPEC. NO.							ELEC. DES. APP. MECH. DES. APP.				

THE CONTENTS OF THIS DRAWING ARE THE EXCLUSIVE PROPERTY OF THE TECHNICAL MATERIEL CORP. ITS UNAUTHORIZED USE OR REPRODUCTION IN WHOLE OR IN PART IS STRICTLY FORBIDDEN.

REQ. PER UNIT

1

USED ON

MODEL

CAB-2

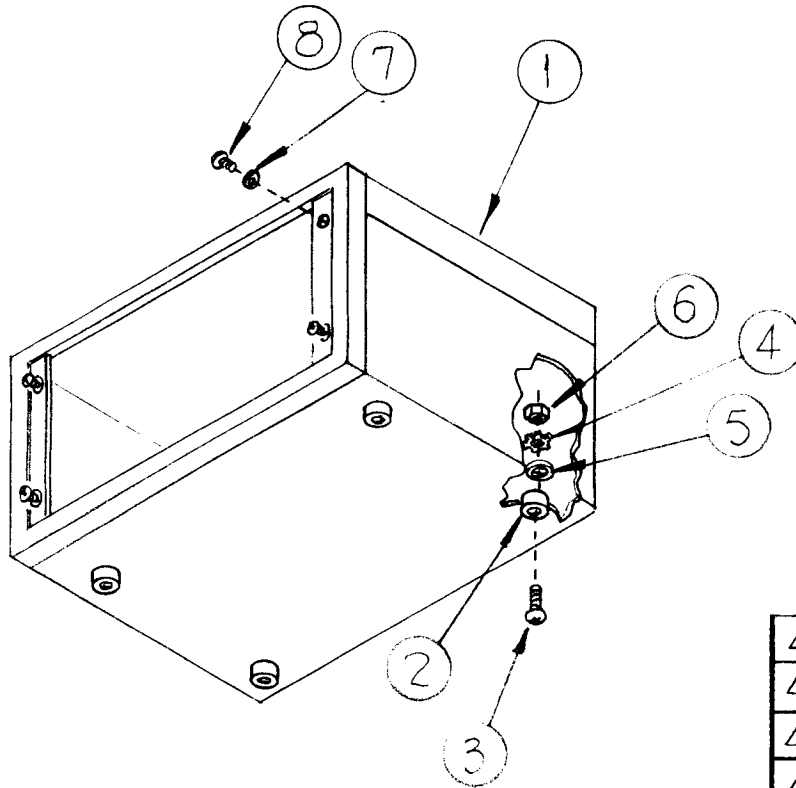
ASS'Y. NO.

DATE

1-15-62

A-2283

A



NOTE ~ Items 7 & 8 Supplied as Loose Items.

4	8	SCBP1032BN8	SCREW, MACHINE
4	7	WA-101-5	WASHER, FIBRE
4	6	NTH1032BN10	NUT, HEX.
4	5	FW104BN	WASHER, FLAT
4	4	LWE10MRN	LOCKWASHER, EXT.
4	3	SCBP1032BN20	SCREW, MACHINE
4	2	PX-277	CASE MOUNTS
1	1	A-1228	CABINET, ELECTRICAL, EQUIPMENT

A						
ITEM ⑧ WAS SCBP0832BN8						
ITEM ⑦ WAS WA-101-11						
5-25-62	6698	V.R.R.	<i>[Signature]</i>	<i>[Signature]</i>	<i>[Signature]</i>	<i>[Signature]</i>
SYM	DESCRIPTION	DATE	CH. NO.	DRAFTS	CHECKER	ENG. APP.
UNLESS OTHERWISE SPECIFIED:		SCALE:				
DIMENSIONS ARE IN INCHES		MAXIMUM ALLOWABLE TOLERANCES HAVE BEEN DETERMINED AND ANY DEVIATIONS WILL BE CAUSE FOR REJECTION.				
TOLERANCES ON		REMOVE ALL BURRS AND SHARP EDGES				
FRAC. ± 1/64 DEC. ± .005 ANGLES ± 1/2°						

REQ.	ITEM	PART NO.	DESCRIPTION	SYMBOL
STOCK SIZE			THE TECHNICAL MATERIEL CORP.	
MATERIAL			MAMARONECK, NEW YORK	
			FINAL ASSEMBLY, CAB-2	
TYPE & TEMPER		HEAT TREAT. SPEC.	DRAWN	CHECKED
FINISH & SPEC. NO.		ELEC. DES. APP.	MECH. DES. APP.	FINAL APPROVAL
			<i>[Signature]</i>	<i>[Signature]</i>
				A-2283
				A

THE CONTENTS OF THIS DRAWING ARE THE EXCLUSIVE PROPERTY OF THE TECHNICAL MATERIEL CORP. ITS UNAUTHORIZED USE OR REPRODUCTION IN WHOLE OR IN PART IS STRICTLY FORBIDDEN.

REQ. PER UNIT

USED ON

MODEL

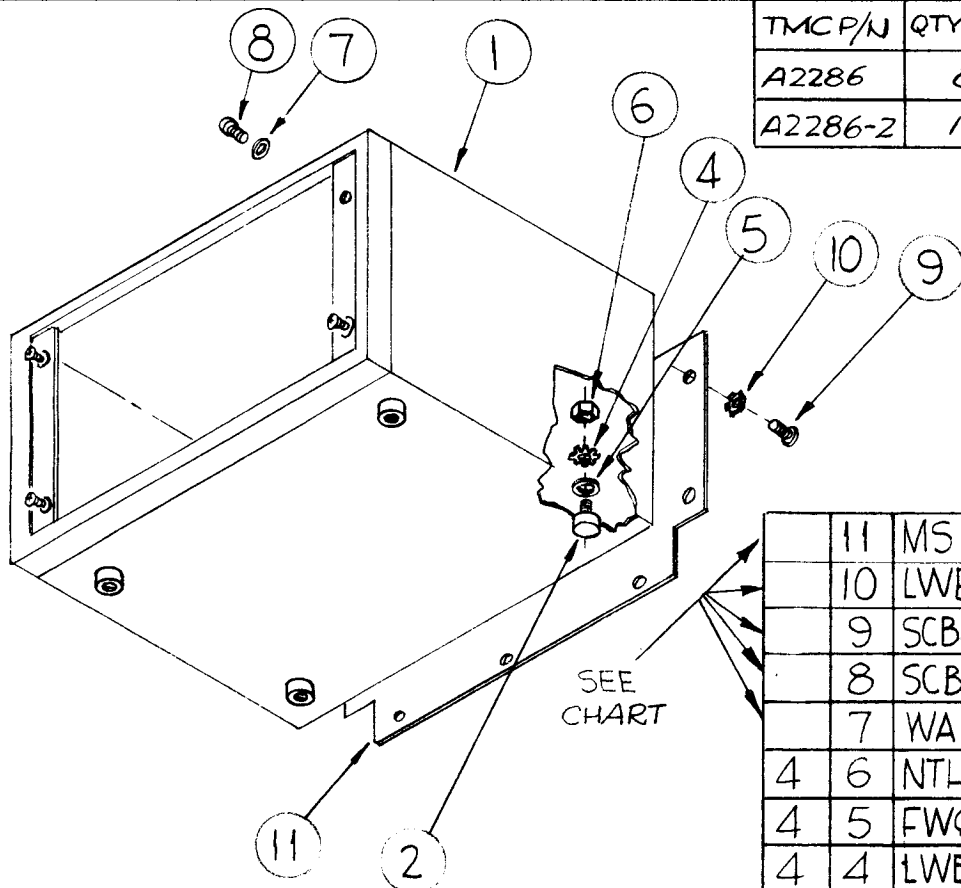
ASS'Y. NO.

DATE

1-16-62

A 2286

C



TMCP/N	QTY. IT. 7	QTY. IT. 8	QTY. IT. 9	QTY. IT. 10	QTY. IT. 11	MODEL USED ON
A2286	8	8	10	10	1	CAB-3
A2286-2	12	12	—	—	—	CAB-3A

SEE CHART

NOTE ~ Items 7 & 8 Supplied as Loose Items.

11	MS 995	REAR, COVER, CABINET
10	LWE06MRN	LOCKWASHER, EXT.
9	SCBP0632BN6	SCREW, MACHINE
8	SCBP1032BN8	SCREW, MACHINE
7	WA 101-11	WASHER, FIBRE
4	6 NTH0832BN10	NUT, HEX.
4	5 FW08HBN	WASHER, FLAT
4	4 LWE08MRN	LOCKWASHER, EXT.
	3	DELETED
4	2 PX853	CASE, MOUNT
1	1 MS 994	CABINET, ELECTRICAL, EQUIP.

SYM	DESCRIPTION	DATE	CH. NO.	DRAFTS	CHECKER	ENG. APP.
C	ITEMS 7 & 8 ADDED TO CHT.	6-22-72	20740	GE	CP	CP
B	DRAWING UPDATED	1-19-67	17703	RME	CP	CP
A	IT. 7 WAS WA-101-5	12/14/65	15377	EWL	CP	CP

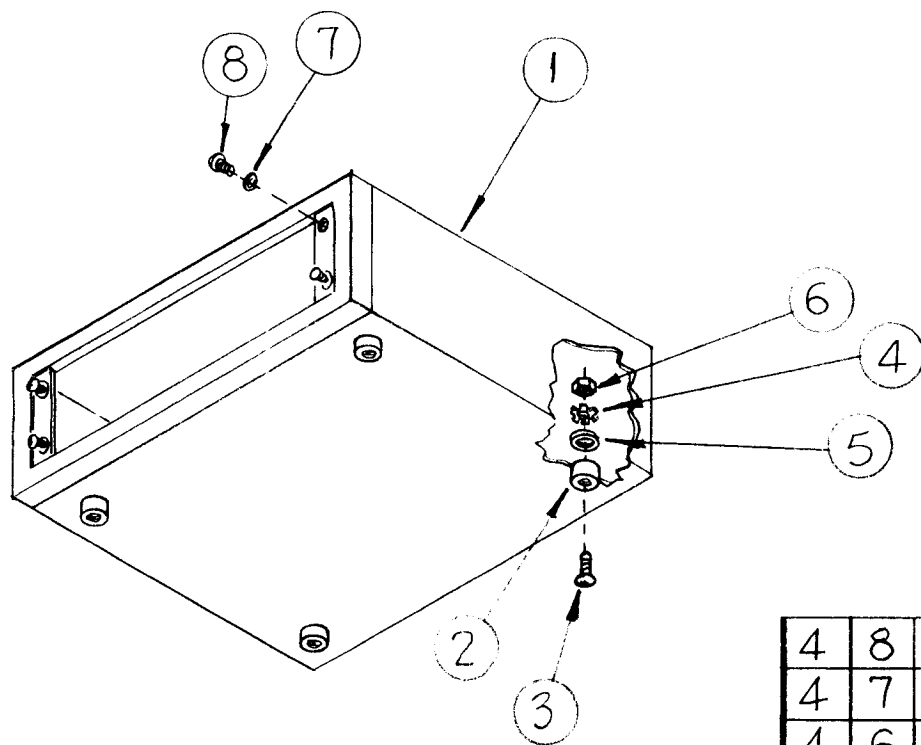
UNLESS OTHERWISE SPECIFIED:
 DIMENSIONS ARE IN INCHES
 TOLERANCES ON
 FRAC. ± 1/64 DEC. ± .005 AN LES ± 1/20

SCALE:
 MAXIMUM ALLOWABLE TOLERANCES HAVE BEEN DETERMINED AND ANY DEVIATIONS WILL BE CAUSE FOR REJECTION.
 REMOVE ALL BURRS AND SHARP EDGES

REQ.	ITEM	PART NO.	DESCRIPTION	SYMBOL
THE TECHNICAL MATERIEL CORP. MAMARONECK, NEW YORK				
FINAL ASSEMBLY, CAB-3				
MATERIAL				
TYPE & TEMPER HEAT TREAT. SPEC.				
FINISH & SPEC. NO.				
			DRAWN	CHECKED
			ELEC. DES. APP.	MECH. DES. APP.
			A 2286 C	

THE CONTENTS OF THIS DRAWING ARE THE EXCLUSIVE PROPERTY OF THE TECHNICAL MATERIEL CORP. ITS UNAUTHORIZED USE OR REPRODUCTION IN WHOLE OR IN PART IS STRICTLY FORBIDDEN.

REQ. PER UNIT 1	USED ON		A-2287	A
	MODEL	ASS'Y. NO.		
	CAB-4			
		DATE		
		1-15-62		



4	8	SCBP1032BN8	SCREW, MACHINE
4	7	WA-101-5	WASHER, FIBRE
4	6	NTH1032BN10	NUT, HEX.
4	5	FW10HBN	WASHER FLAT
4	4	LWE10MRN	LOCKWASHER, EXT.
4	3	SCBP1032BN20	SCREW MACHINE
4	2	PX-277	CASE MOUNT
1	1	MS-1287	CABINET, ELECTRICAL, EQUIP.

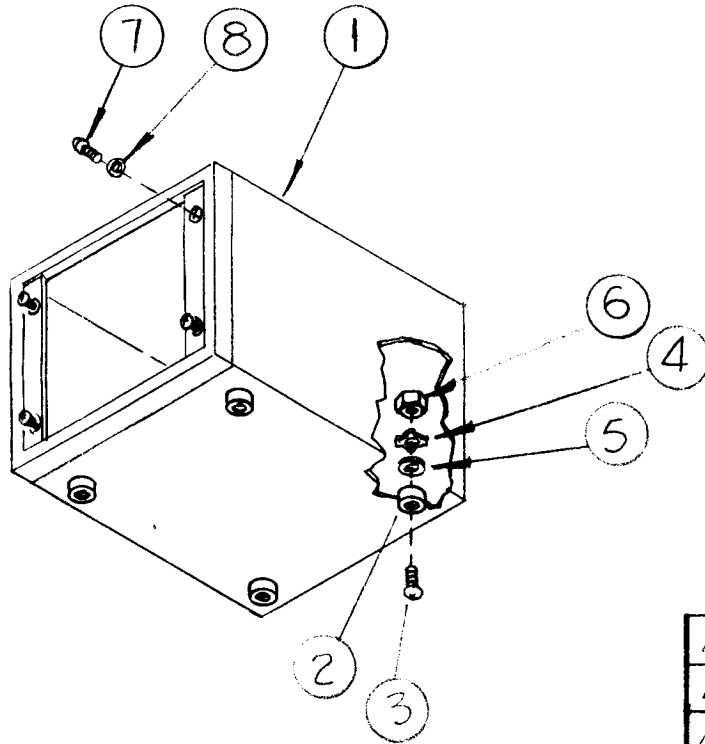
NOTE ~ ITEMS 7 & 8 SUPPLIED AS LOOSE ITEMS.

SYM	DESCRIPTION	DATE	CH. NO.	DRAFTS	CHECKER	ENG. APP.
A	ITEM 7 WAS WA-101-11 ITEM 8 WAS SCBP0832BN8	5-25-62	6698	V.R.R.	J. H. L.	[Signature]
UNLESS OTHERWISE SPECIFIED: DIMENSIONS ARE IN INCHES TOLERANCES ON FRAC. ± 1/64 DEC. ± .005 ANGLES ± 1/2°		SCALE: MAXIMUM ALLOWABLE TOLERANCES HAVE BEEN DETERMINED AND ANY DEVIATIONS WILL BE CAUSE FOR REJECTION. REMOVE ALL BURRS AND SHARP EDGES				

REQ.	ITEM	PART NO.	DESCRIPTION	SYMBOL
STOCK SIZE			THE TECHNICAL MATERIEL CORP. MAMARONECK, NEW YORK	
MATERIAL			FINAL ASSEMBLY, CAB-4	
TYPE & TEMPER		HEAT TREAT. SPEC.	DRAWN	CHECKED
FINISH & SPEC. NO.		ELEC. DES. APP.	MECH. DES. APP.	FINAL APPROVAL
			[Signature]	[Signature]
			A-2287	A

THE CONTENTS OF THIS DRAWING ARE THE EXCLUSIVE PROPERTY OF THE TECHNICAL MATERIEL CORP. ITS UNAUTHORIZED USE OR REPRODUCTION IN WHOLE OR IN PART IS STRICTLY FORBIDDEN.

REQ. PER UNIT	USED ON			A-2288	A
	MODEL	ASS'Y. NO.	DATE		
1	CAB-5		1-15-62		



NOTE~ Items 7 & 8 Supplied as loose Items.

4	8	WA-101-5	WASHER, FIBRE
4	7	SCBP1032BN8	SCREW, MACHINE
4	6	NTH1032BN10	NUT, HEX.
4	5	FW10HBN	WASHER, FLAT
4	4	LWE10MRN	LOCKWASHER, EXT.
4	3	SCBP1032BN20	SCREW, MACHINE
4	2	PX-277	CASE MOUNT
1	1	MS-949	CABINET, ELECTRICAL, EQUIP.

A	ITEM 7 WAS SCBP0832BN8 ITEM 8 WAS WA-101-11	5-25-62	6698	V.R.R.	<i>File</i>	<i>710</i>
SYM	DESCRIPTION	DATE	CH. NO.	DRAFTS	CHECKER	ENG. APP.
UNLESS OTHERWISE SPECIFIED: DIMENSIONS ARE IN INCHES TOLERANCES ON FRAC. ± 1/64 DEC. ± . 5 ANGLES ± 1/2°		SCALE: MAXIMUM ALLOWABLE TOLERANCES HAVE BEEN DETERMINED AND ANY DEVIATIONS WILL BE CAUSE FOR REJECTION. REMOVE ALL BURRS AND SHARP EDGES				

REQ.	ITEM	PART NO.	DESCRIPTION	SYMBOL
STOCK SIZE			THE TECHNICAL MATERIEL CORP. MAMARONECK, NEW YORK	
MATERIAL			FINAL ASSEMBLY, CAB-5	
TYPE & TEMPER	HEAT TREAT. SPEC.	DRAWN	CHECKED	FINAL APPROVAL
FINISH & SPEC. NO.		ELEC. DES. APP.	MECH. DES. APP.	A-2288 A

REQ. PER UNIT	USED ON			A-2292
	MODEL	ASS'Y. NO.	DATE	
1	GPT-40K*5	AP117		

THIS IS A REFERENCE DRAWING
 ASSIGNED FOR PROVISIONING
 PURPOSES AND DOES NOT
 REQUIRE A PICTORIAL

REQ.	ITEM	PART NO.	DESCRIPTION				SYMBOL
			THE TECHNICAL MATERIEL CORP. MAMARONECK. NEW YORK				
			STOCK SIZE				
			FILTER BOARD ASSY				
			MATERIAL				
SYM	DESCRIPTION	DATE	CH. NO.	DRAFTS	CHECKER	ENG. APP.	
UNLESS OTHERWISE SPECIFIED DIMENSIONS ARE IN INCHES AND INCLUDE CHEMICALLY APPLIED OR PLATED FINISHES		SCALE					
				TYPE & TEMPER		HEAT TREAT. SPEC.	ENG COORD
						DRAWN	CHECKED
						FINAL APPROVAL	
DECIMALS .X ± .05 .XX ± .01 .XXX ± .005	TOLERANCES	FRACTIONS ± 1/64 ANGLES ± 0° 30'	CODE				
				FINISH & SPEC. NO.		ELEC. DES. APP.	MECH. DES. APP.
						A - 2292	

REQ. PER UNIT	USED ON			A - 2294
	MODEL	ASS'Y. NO.	DATE	
1	GPT-40K*4	AX511		

GPT-40K*5

THIS IS A REFERENCE DRAWING
 ASSIGNED FOR PROVISIONING
 PURPOSES AND DOES NOT
 REQUIRE A PICTORIAL

SYM	DESCRIPTION	DATE	CH. NO.	DRAFTS	CHECKER	ENG. APP.	REQ.	ITEM	PART NO.	DESCRIPTION	SYMBOL			
										THE TECHNICAL MATERIEL CORP. MAMARONECK, NEW YORK TUBE CMPRT ASSY				
									STOCK SIZE					
									MATERIAL					
									ENG COORD					
UNLESS OTHERWISE SPECIFIED DIMENSIONS ARE IN INCHES AND INCLUDE CHEMICALLY APPLIED OR PLATED FINISHES		SCALE												
DECIMALS .X ± .05 .XX ± .01 .XXX ± .005		FRACTIONS ± 1/64 ANGLES ± 0° 30'		TOLERANCES		CODE				TYPE & TEMPER	HEAT TREAT. SPEC.	DRAWN	CHECKED	FINAL APPROVAL
										FINISH & SPEC. NO.	ELEC. DES. APP.	MECH. DES. APP.		A - 2294

REQ. PER UNIT	USED ON			A-2296
	MODEL	ASS'Y. NO.	DATE	
1	GPT-40K*4	AX511		

GPT-40K*5

THIS IS A REFERENCE DRAWING
 ASSIGNED FOR PROVISIONING
 PURPOSES AND DOES NOT
 REQUIRE A PICTORIAL

SYM	DESCRIPTION	DATE	CH. NO.	DRAFTS	CHECKER	ENG. APP.	REQ.	ITEM	PART NO.	DESCRIPTION	SYMBOL			
										THE TECHNICAL MATERIEL CORP. MAMARONECK. NEW YORK FRONT PANEL ASSY				
									STOCK SIZE					
									MATERIAL					
UNLESS OTHERWISE SPECIFIED . DIMENSIONS ARE IN INCHES AND INCLUDE CHEMICALLY APPLIED OR PLATED FINISHES		SCALE								ENG COORD				
DECIMALS .X ± .05 .XX ± .01 .XXX ± .005		FRACTIONS ± 1/64 ANGLES ± 0° 30'		TOLERANCES			CODE			TYPE & TEMPER	HEAT TREAT. SPEC.	DRAWN	CHECKED	FINAL APPROVAL
										FINISH & SPEC. NO.	ELEC. DES. APP.	MECH. DES. APP.	A-2296	

REQ. PER UNIT	USED ON			A-2298
	M DEL	ASS'Y. NO.	DATE	
1	AP-103	AP-103		

SYMBOL(S) ITEM
NO. USED TO MOUNT QUAN.

C8101	1																				
C8102																					
C8103																					
C8104																					
C8105																					
C8106																					
L8102	2																				
L8103																					
L8104																					
4	CL-155	6							6	17	SCHH1032BN13	SCREW, MACH									
9	LD-794	4							6	16	SCHH1032BN8	SCREW, MACH									
	PM-604	6							4	15	SCBP1032BN14	SCREW, MACH									
	FC-102 & PM-604	12							12	14	SCBP0632BN4	SCREW, MACH									
10	CC-109	12							10	13	NTH1032BN12	NUT, HEX									
11	LD-794	4							12	12	LWS10MRN	WASHER, LOCK, SPLIT									
12	PM-604	6							4	11	LWE10MRN	WASHER, LOCK, EXT.									
	FC-102 & PM-604	6							12	10	LWE06MRN	WASHER, LOCK, EXT.									
13	LD-794	4							22	9	FW10HBN	WASHER, FLAT									
	FC-102 & PM-604	6							6	8	PM-604	PLATE, CONTACT									
14	CC-109	12							6	7	MS-202-20-1.875	LEAD, ELECT.									
15	LD-794	4							1	6	LD-794/PX-526	BOARD, AC LINE FILTER									
16	PM-604	6							1	5	LD-788/MS-2056	BOX, FILTER									
17	FC-102 & PM-604	6							6	4	FC-102-5XN	CLIP, ELECT., 13/16 D									
									3	3	EY-102-19	GROMMET									
									3	2	CL-155	COIL, RF, FXD									
									6	1	CC-109-38	CAP, FXD, CER, 1000 uuf									

									REQ. ITEM	PART NO.	BUDETTI	DESCRIPTION	SYMBOL	
											THE TECHNICAL MATERIEL CORP. MAMARONECK. NEW YORK			
										STOCK SIZE	FILTER BOX ASSY			
SYM	DESCRIPTION	DATE	CH. NO.	DRAFTS	CHECKER	ENG. APP.				MATERIAL				
UNLESS OTHERWISE SPECIFIED DIMENSIONS ARE IN INCHES AND INCLUDE CHEMICALLY APPLIED OR PLATED FINISHES		SCALE									L. GABEL CD 1/13/64	15 1/32	RAC	
DECIMALS .X ± .05 .XX ± .01 .XXX ± .005	TOLERANCES	FRACTIONS ± 1/64 ANGLES ± 0° 30'	CODE							TYPE & TEMPER	HEAT TREAT. SPEC.	DRAWN	CHECKED	FINAL APPROVAL
														A-2298
										FINISH & SPEC. NO.	ELEC. DES. APP.	MECH. DES. APP.		