

MATERIAL - XXXP PHENOLIC, 1/8" THICK. FINISH - NATURAL

ALL LETTERING TO BE 1/8" HIGH BLACK GOTHIC AS PER TMC SPEC - 5-727

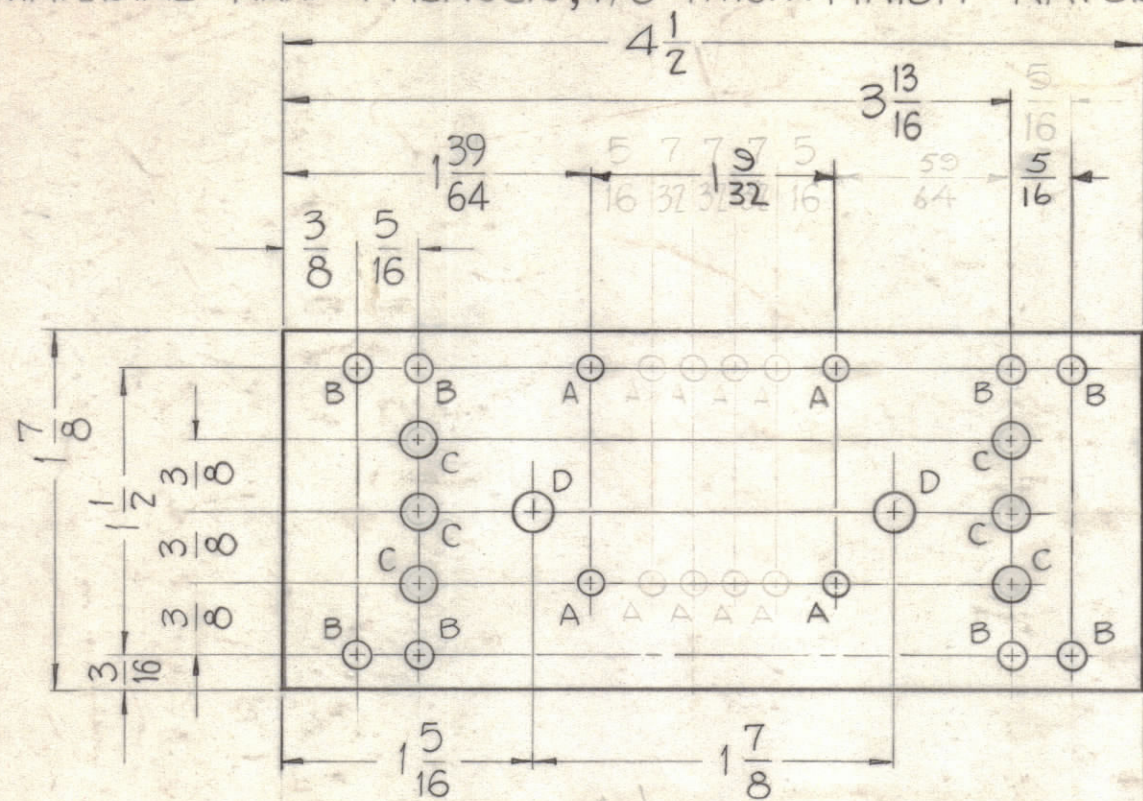
A-2183 D

APPLY FUNGUS PROOFING AFTER MARKING PER TMC 5-113

H

G

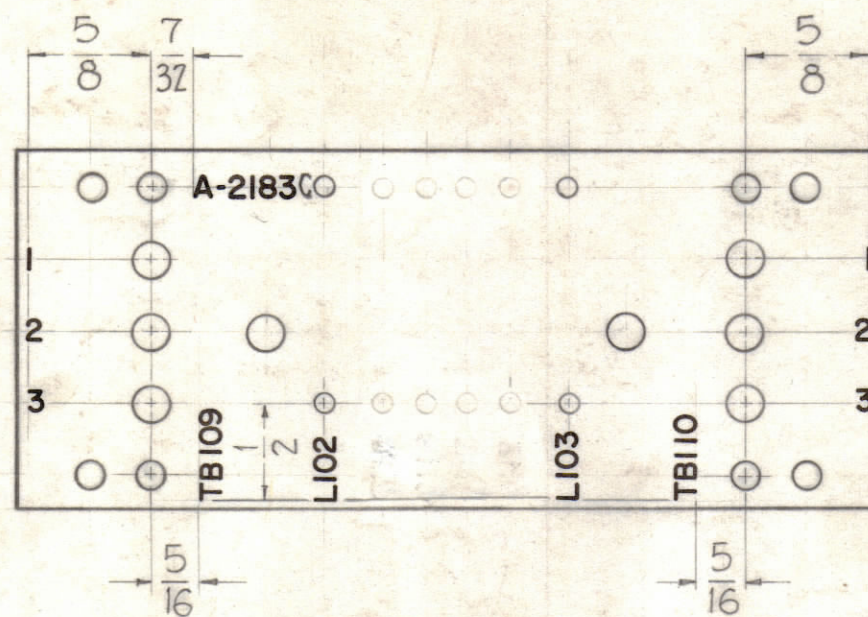
F



HOLES

- A - .116 DIA. — 4 REQ.
- B - .125 DIA. — 8 REQ.
- C - .187 DIA. — 6 REQ.
- D - .189 DIA. — 2 REQ.

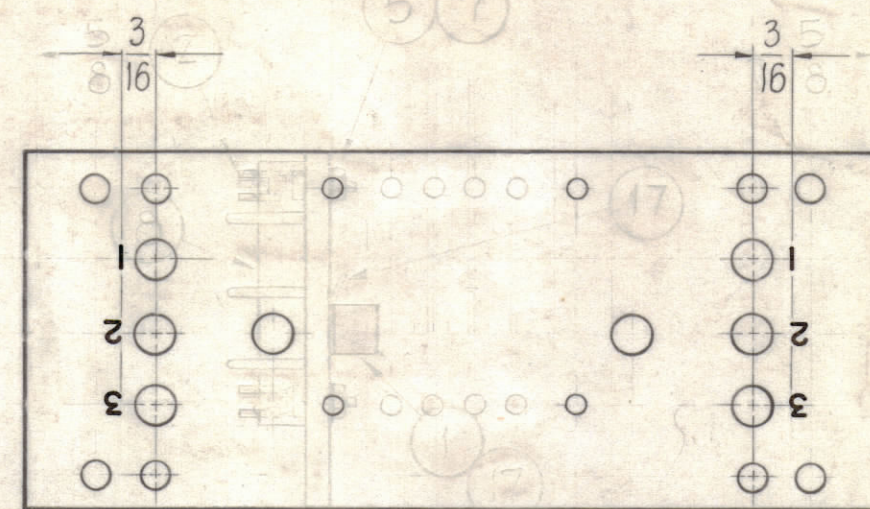
STAGE - 1
MACHINING
(A-2183-1)



TOP VIEW

STAMPING
(A-2183-2)

STAGE - 2
STAMPING
(A-2183-2)



STAGE - 2
SUB-ASSEMBLY

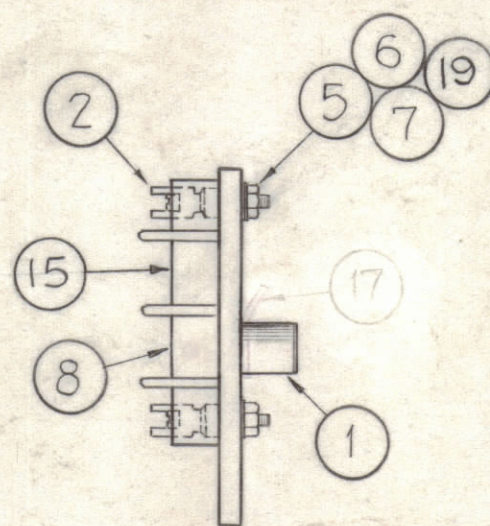
(A-2183-3)

E

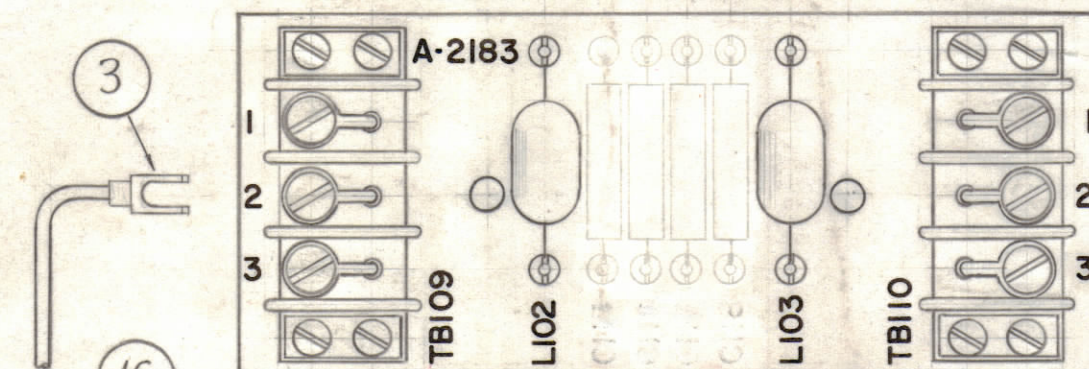
D

C

B

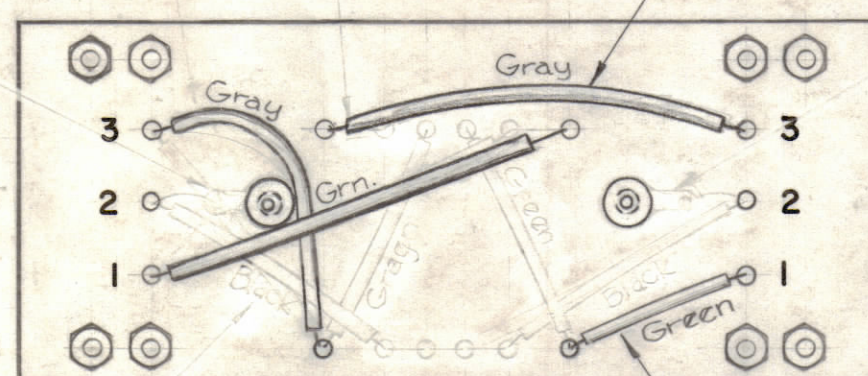


STAGE - 3
SUB-ASSEMBLY
(A-2183-3)



TOP VIEW

LEAD SHOWN REMOVED FROM TERM #2
OF TB-109 FOR CLARITY.



BOTTOM VIEW

STAGE - 4
FINAL ASSEMBLY
(A-2183-4)

NOTE:
CUT ITEM
(17) AS SHORT
AS POSSIBLE
TO MAKE
CONNECTION

8	19	FW04 HBN	WASHER, FLAT	
X	18	BS100	SOLDER, SOFT	
2	17	DELETED	TERMINAL LOCKING	
8"	16	MWC18(16)UO	CABLE, INSULATED	Black
4	15	MS-154-1	PLATE, TERMINAL STRIP	
16"	14	WL-100-7	WIRE, BUSS BAR	
3"	13	PX104-7-.034	SLEEVING, INSULATION	Gray
2"	12	PX104-4-.034	SLEEVING, INSULATION	Green
2"	11	DELETED	SLEEVING, INSULATION	Black
4	10	DELETED	CAPACITOR, FIXED, MICA	
2	9	CL140-1	COIL, D.F.	LI02, LI03
2	8	TM100-3	TERMINAL STRIP	TB109 TB110
8	7	NTH0440BN6	NUT, HEXAGON, DOUBLE CHAMFER	
8	6	LWEO4MRN	LOCKWASHED, EXTERNAL TOOTH	
8	5	SCBP0440BN8	SCREW, MACHINE	
1	4	TE-156-32953	TERMINAL, SOLDERLESS	
1	3	TE-120-2	LUG, SPADE	
4	2	TE-109-3	TERMINAL LUG, SPLIT	
2	1	TE-108-3	STANDOFF, RIVET TYPE	

REQ.	ITEM	PART NO.	DESCRIPTION	SYMBOL
THE TECHNICAL MATERIEL CORP. MAMARONECK, NEW YORK				
STOCK SIZE				
MATERIAL				
ASSEMBLY, TERMINAL BOARD				
		John C. Biele	JCB	LB/EB
		DRAWN	CHECKED	FINAL APPROVAL
		TYPE & TEMPER	HEAT TREAT. SPEC.	
		SEE NOTE, STAGE 2		
		FINISH & SPEC. NO.	ELEC. DES. APP.	MECH. DES. APP.
			A-2183	D
			SHEET	OF

SYM	ZONE	DESCRIPTION	DATE	CH. NO.	DRAFTS	CHECKER	ENG. APP.
D		11,10,11 & 17 DELETED, 19 ADDED	10/25/66	17126	RME		
C	H5,4,3	5-113 NOTE ADDED	4.13.64	11186	WB		
B	D2,C5	ITEM (17) WASTE-104-4; NOTE ADDED TO ITEM (17)	9-11-62	7318	SP		
A	EG-4	C115,116,117,118 Were C109,110,111,112	11-30-61	5977	hh		

UNLESS OTHERWISE SPECIFIED:
DIMENSIONS ARE IN INCHES
TOLERANCES ON
FRACTIONS ± 1/64 DECIMALS ± .005 ANGLES ± 1/2°

SCALE DO NOT SCALE

MAXIMUM ALLOWABLE TOLERANCES HAVE BEEN DETERMINED AND ANY DEVIATIONS WILL BE CAUSE FOR REJECTION. REMOVE ALL BURRS & SHARP EDGES

REQ. PER UNIT	MODEL	SECTION	ASS'Y. NO.	DATE
1	TER25K/50			9-25-61
USED ON				