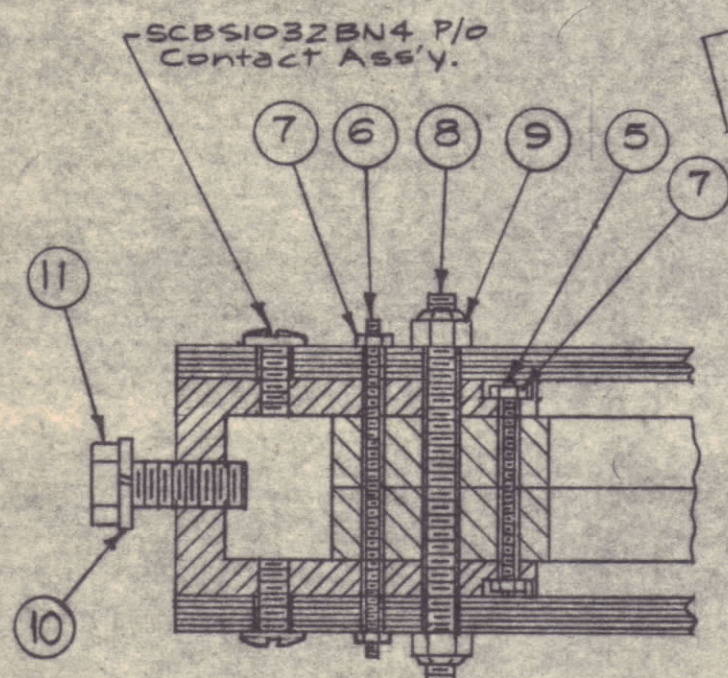
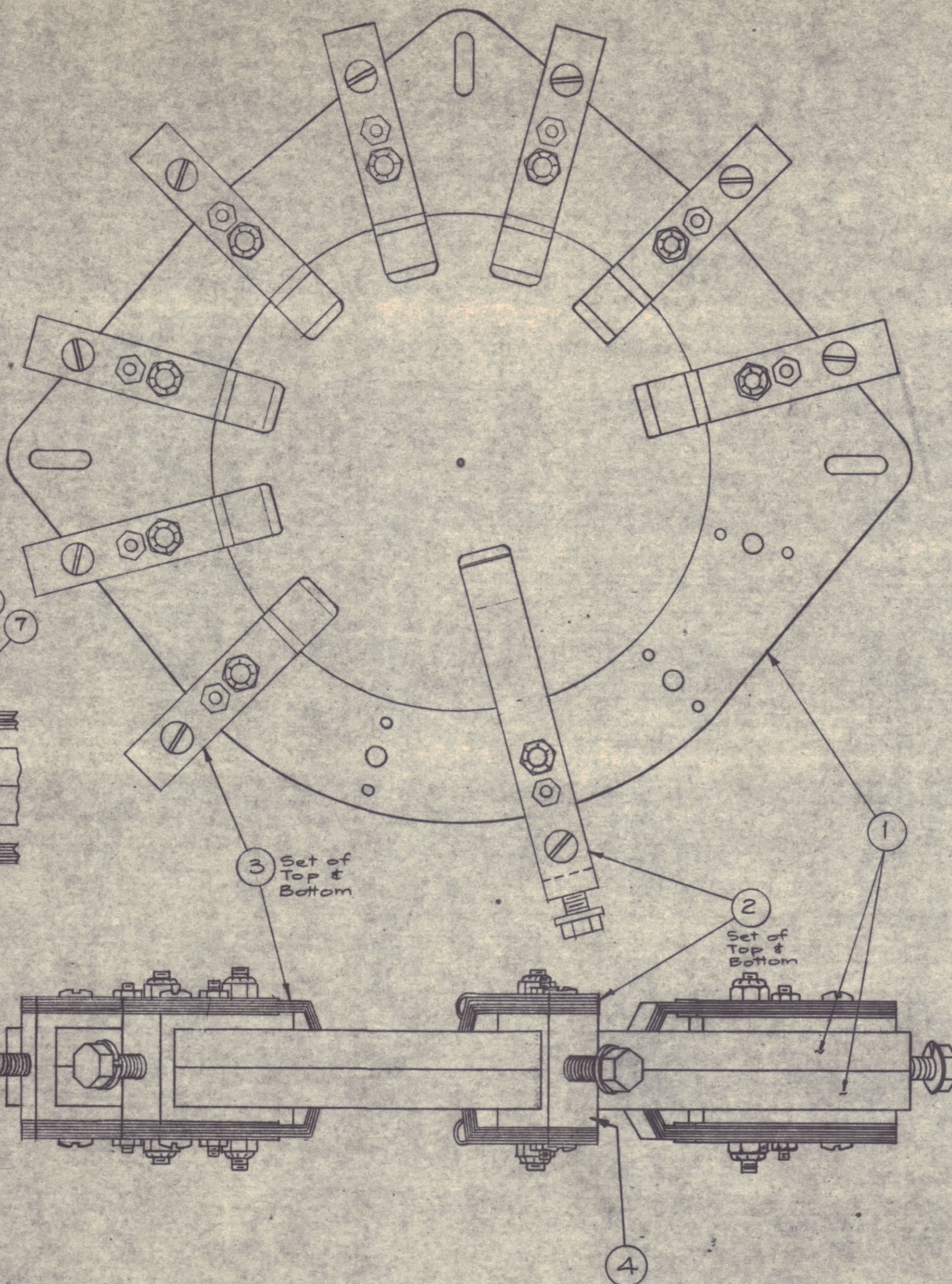


IF IT IS FOUND DESIRABLE TO CHANGE ANY TOLERANCE OR OTHER DETAIL SPECIFIED ON THIS DRAWING NOTIFY THE PURCHASER PROMPTLY.

MAXIMUM ALLOWABLE TOLERANCES HAVE BEEN DETERMINED AND DEVIATIONS WILL BE CAUSE FOR REJECTION. REMOVE ALL BURRS AND SHARP EDGES.



FILE COPY
 Do NOT DESTROY
 RE-NUMBERED AX-280
 5/15/62

A-2179

REVISED [Stamp] 1962

REQ. ITEM	PART NO.	DESCRIPTION	SYMBOL
9	11	SCH2520BNS Bolt, Machine	
9	10	LWS25MRN Lockwasher, Split	
18	9	SM127D1032 Nut, Locking	
9	8	SM1032BP1.937 Rod, Threaded, 10-32 X 1 15/16	
36	7	NTH0348BNG Nut, Hex.	
9	6	SM0348BP1.500 Rod, Threaded, 3-48 X 1 1/2	
9	5	SM0348BP1.125 Rod, Threaded, 3-48 X 1 1/8	
9	4	PM-570 Bar, Contact, "U"	
8	3	AX-129 Contact Ass'y., Short	Set
1	2	AX-128 Contact Ass'y., Long	Set
2	1	WS-105 Wafer, Switch; Ceramic	

THE TECHNICAL MATERIEL CORP. MAMARONECK, NEW YORK			
STOCK SIZE			
AX-280 ASS'Y (WAFER ASS'Y.)			
MATERIAL	WEIGHT PER PC.	aB	
TYPE & TEMPER			
DRAWN		ELEC. DES. APP.	MECH. DES. APP.
HEAT TREAT. SPEC.		FINAL APPROVAL	
FINISH & SPEC. NO.		A-2179	

ISSUE	ITEM	CHANGED FROM	DATE	CH. NO.	DRAFTS	CHECKER	ENG. APP.
TOLERANCES							
ALL OTHERS				SCALE: FULL			
DEC. DIM. ±				DRILL, PUNCH, COMMERCIAL STOCK			
FRAC. DIM. ±				SIZES AND MANUFACTURERS			
ANGULAR DIM. ±				TOLERANCES ARE NOT INCLUDED.			

REQ. PER UNIT	MODEL	PROJECT NO.	ASSY. NO.	DATE
1	GPT-10K			9-25-61
USED ON				